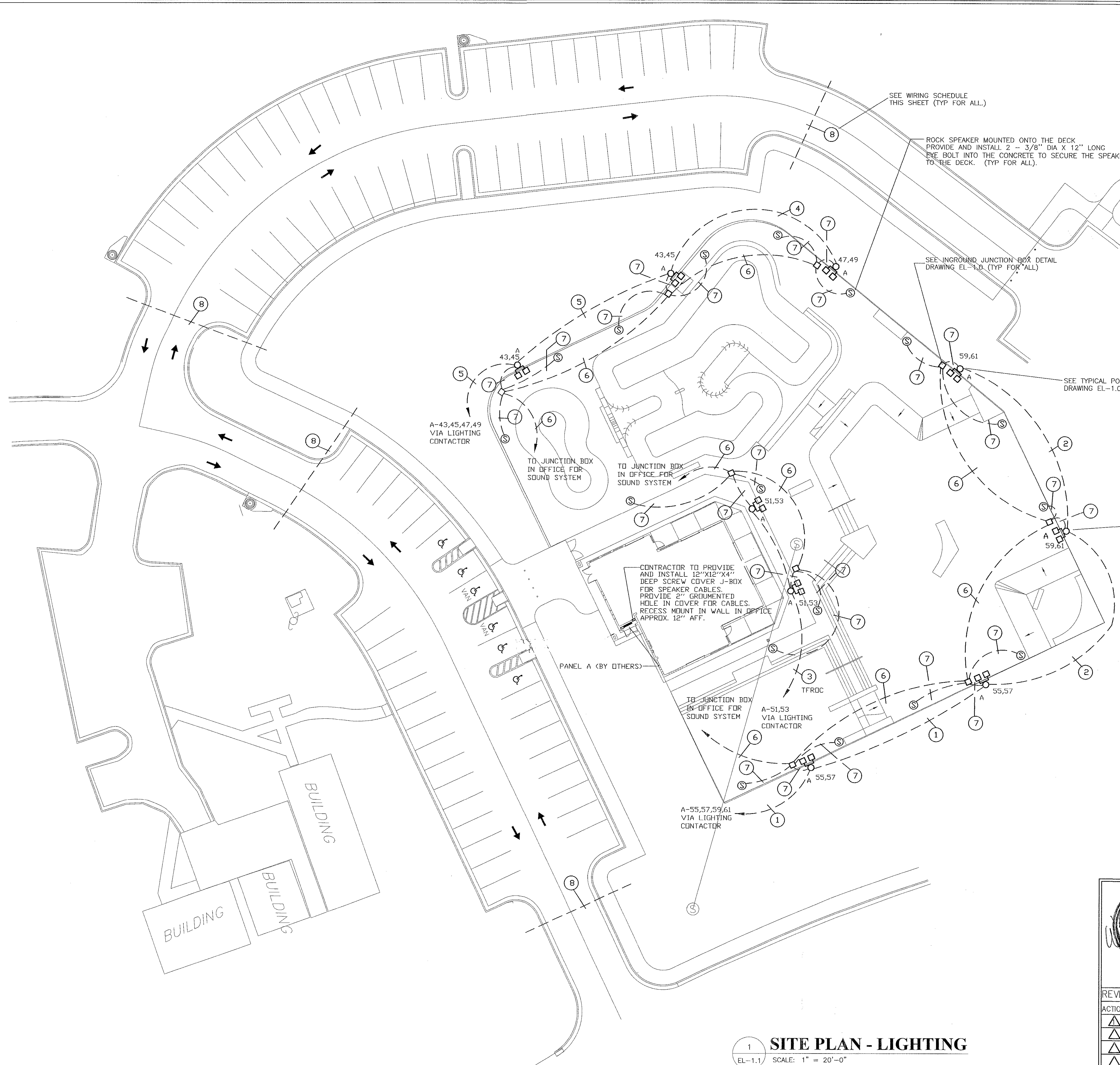


**WIRING SCHEDULE**

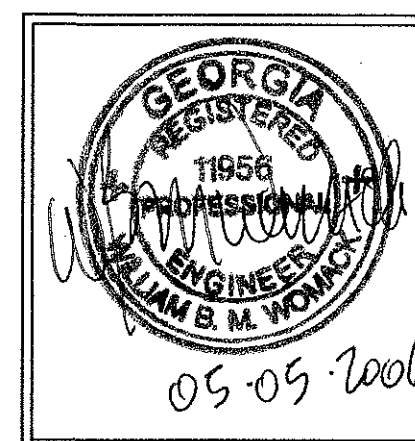
- ① 2#4 + 2#6 + 1#4G IN 1 1/4" C.
- ② 2#4 + 1#4G IN 1" C.
- ③ 2#8 + 1#8G IN 3/4" C.
- ④ 2#6 + 1#6G IN 1" C.
- ⑤ 4#6 + 1#6G IN 1 1/4" C.
- ⑥ 2-WEST PENN #AQ296 CABLES IN 1 1/4" C.
- ⑦ 1-WEST PENN #AQ296 CABLE IN 3/4" C.
- ⑧ 2-3" EMPTY PVC CONDUITS FOR FUTURE

ALL CONDUCTORS ARE TO BE COPPER



FIXTURE TYPE A TO BE 2 EACH - EMCO# ECA-23"-2-FH-1000MH  
208 V-BLP-HS-MF WITH 30 FOOT POLE ULS#RTS 308011 TAPERED POLE  
FROM 8" TO 3.8" WITH 22.1 EPA AND SPEAKER MOUNT AT 15' AFG AND 3/4"  
CONDUIT NIPPLE IN POLE FOR HORN SPEAKER CABLE. (TYP FOR ALL A FIXTURES).

**1 SITE PLAN - LIGHTING**  
EL-1.1 SCALE: 1" = 20'-0"



© Womack & Associates, 2006.  
This drawing may be utilized only for the purpose of constructing or installing the work shown thereon at the site of the work specified. Any other use of this drawing, including without limitation any reproduction or alteration of this drawing, without the prior written approval of Womack & Associates is prohibited.

**SKATE PARK AT BROOK RUN**  
4770 NORTH PEACHTREE ROAD  
ATLANTA, GEORGIA 30338  
**ALTAMIRA**  
591. NORTH HIGHLAND AVENUE  
ATLANTA, GEORGIA 30307  
19 of 58  
SITE ELECTRICAL PLAN

REVISIONS		
ACTION	DATE	DESCRIPTION
△	05/05/06	CHANGED POLE CALLOUT
△		
△		
△		
△		

DRAWN DB  
CHECKED *WJM*  
SCALE AS SHOWN  
DATE 04-07-06

**WOMACK & ASSOCIATES** CONSULTING ENGINEERS  
4200 Perimeter Park South, Suite 225  
Atlanta, Georgia 30341  
Voice 770-458-3005 fax 770-458-8388  
**06005** W&A JOB NO.  
**EL-1.1** DRAWING NUMBER