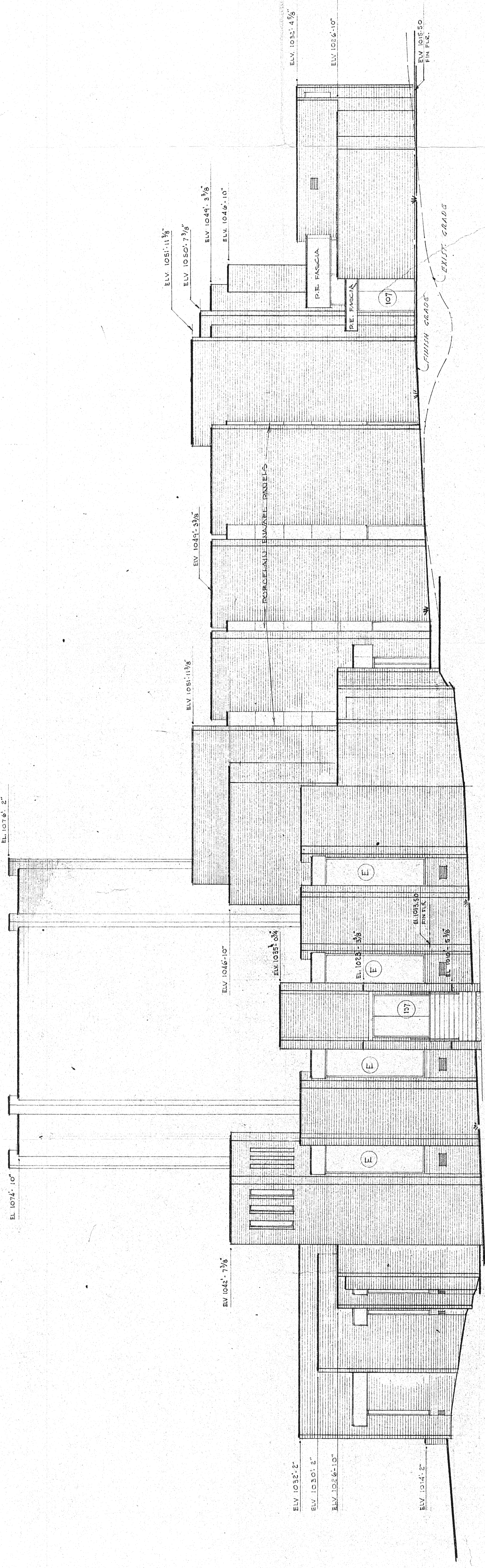


N O R T H E L E V A T I O N SCALE 3/4" = 1'-0"



E A S T E L E V A T I O N SCALE 3/4" = 1'-0"

DATE	REVISION	DESCRIPTION	WHA	BY
8/28/70	1	CHANGED TO AS-BUILT DRAWINGS		

GEORGIA RETARDATION CENTER DECALB COUNTY, GEORGIA GEORGIA DEPARTMENT OF PUBLIC		BUILDING L	
JONES AND ASSOCIATES ARCHITECTS AND ENGINEERS AUGUSTA, GEORGIA		ELEVATIONS DES. R.F.C. DWN. G.R.P. CHK. M.K.J.	
APPROVED BY 		DWG. NO. A-125	
DATE FEB. 1966		REVISION NO. OF 195	

