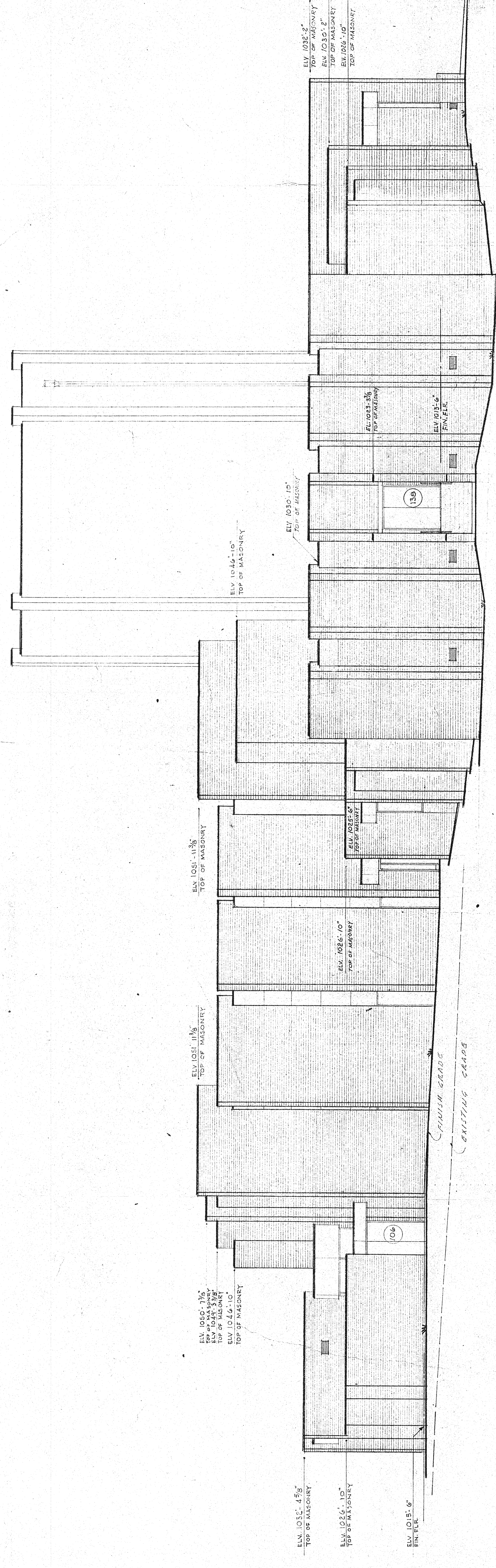


SOUTH ELEVATION SCALE 3/8" = 1'-0"



WEST ELEVATION SCALE 3/8" = 1'-0"

REVISED DATE	REVISION	CHANGED TO AS BUILT DRAWINGS	WHILE BY

JUNY AND ASSOCIATES ARCHITECTS AND ENGINEERS AUGUSTA, GEORGIA		GEORGIA RETARDATION CENTER DEKALB COUNTY, GEORGIA GEORGIA DEPARTMENT OF PUBLIC HEALTH BUILDING L	
DESIGNED BY DRAWN BY CHECKED BY JOB NO. 655	APPROVED BY DATE FEB. 1966	DWG. NO. A-126	REVISION NO. OF 195

