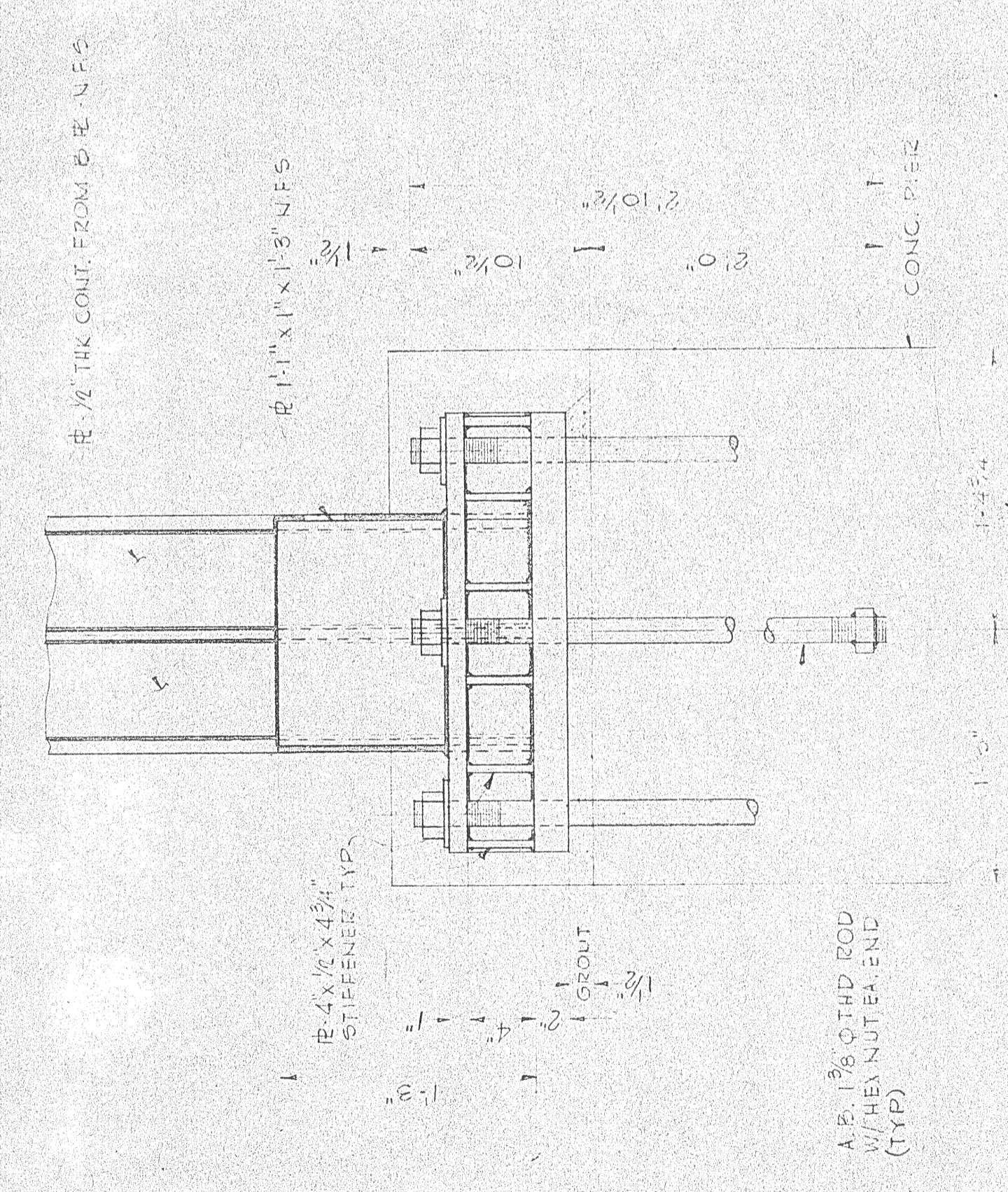
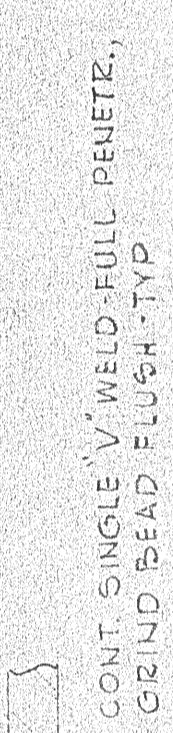
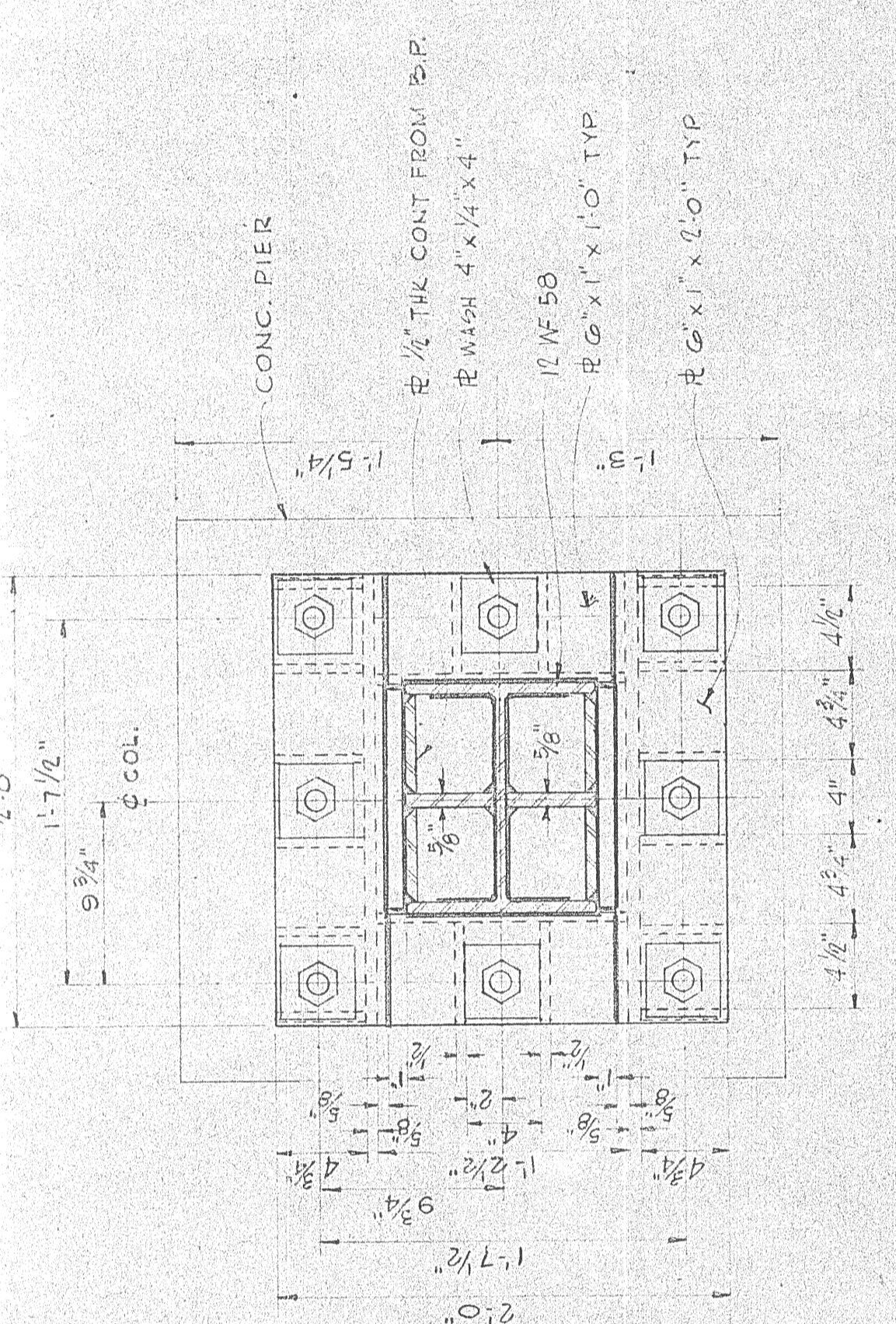


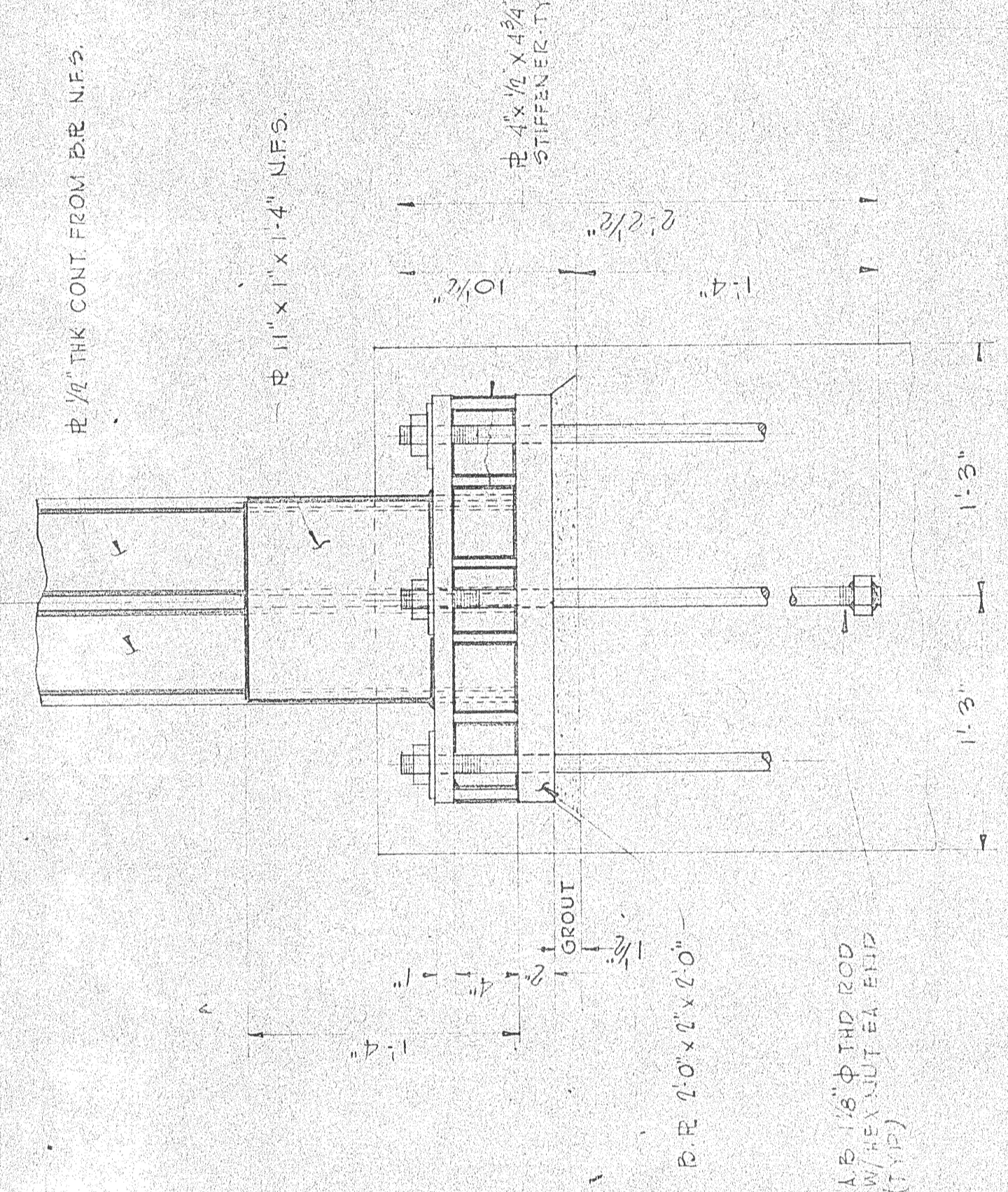
SEE DETAIL 'A'



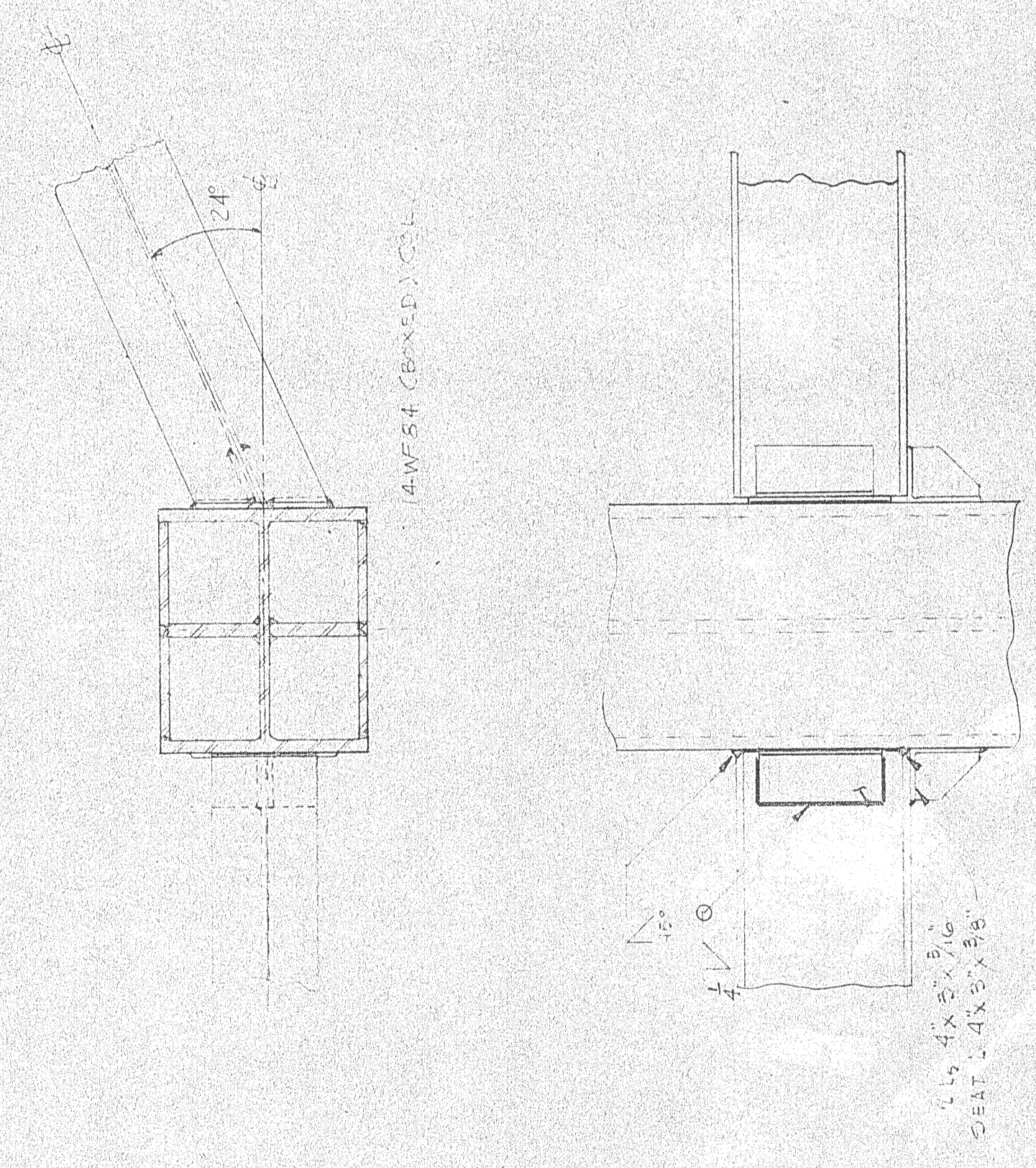
BASE PLATES FOR COLUMNS C18, C19, C21 & C15



DETAIL 'A'

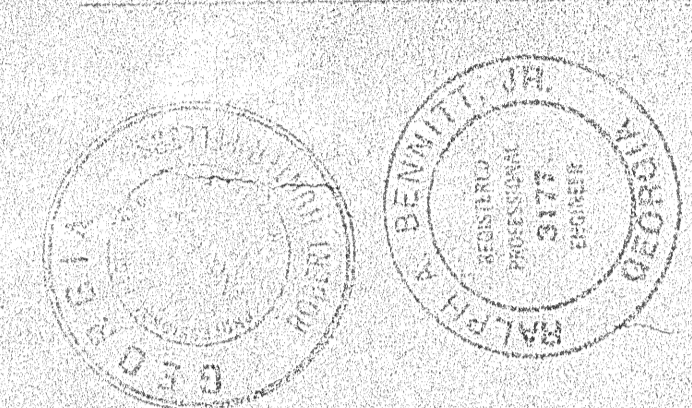


BASE PLATES FOR COLUMNS C15, C16, C19 & C20



TYPICAL BEAM-TO-COLUMN CONNECTION
SCALE: 1/2" = 1'-0"

DATE	REVISION	BY
1/17/63	1	W.H.H.
1/22/63	2	W.H.H.
2/11/63	3	W.H.H.
2/11/63	4	W.H.H.
2/11/63	5	W.H.H.
2/11/63	6	W.H.H.
2/11/63	7	W.H.H.
2/11/63	8	W.H.H.
2/11/63	9	W.H.H.
2/11/63	10	W.H.H.
2/11/63	11	W.H.H.
2/11/63	12	W.H.H.
2/11/63	13	W.H.H.
2/11/63	14	W.H.H.
2/11/63	15	W.H.H.
2/11/63	16	W.H.H.
2/11/63	17	W.H.H.
2/11/63	18	W.H.H.
2/11/63	19	W.H.H.
2/11/63	20	W.H.H.
2/11/63	21	W.H.H.
2/11/63	22	W.H.H.
2/11/63	23	W.H.H.
2/11/63	24	W.H.H.
2/11/63	25	W.H.H.
2/11/63	26	W.H.H.
2/11/63	27	W.H.H.
2/11/63	28	W.H.H.
2/11/63	29	W.H.H.
2/11/63	30	W.H.H.



GEORGIA RETARDATION CENTER
DEKALB COUNTY, GEORGIA
GEORGIA DEPARTMENT OF PUBLIC HEALTH

BUILDING L

STAGE TOWER BASE PLATES & COLUMN DETAILS

ARCHITECTS AND ENGINEERS
JONES AND ASSOCIATES
AUGUSTA, GEORGIA

DESIGNER: R.A.B.
DRAWN: S.A.B.
CHECKED: R.A.B.
JOB NO: 655

APPROVED BY: [Signature]
DATE: FEB. 1963
REVISION NO. 27
OF 75