

NORTH FROM REFERENCE PLATS
 ALTA SURVEY PREPARED BY
 HARTRAMP INC. FOR
 GEORGETOWN SHOPPING CENTER LLC.
 DATED MAY 25 2000, LAST REVISED
 JULY 30 2001.

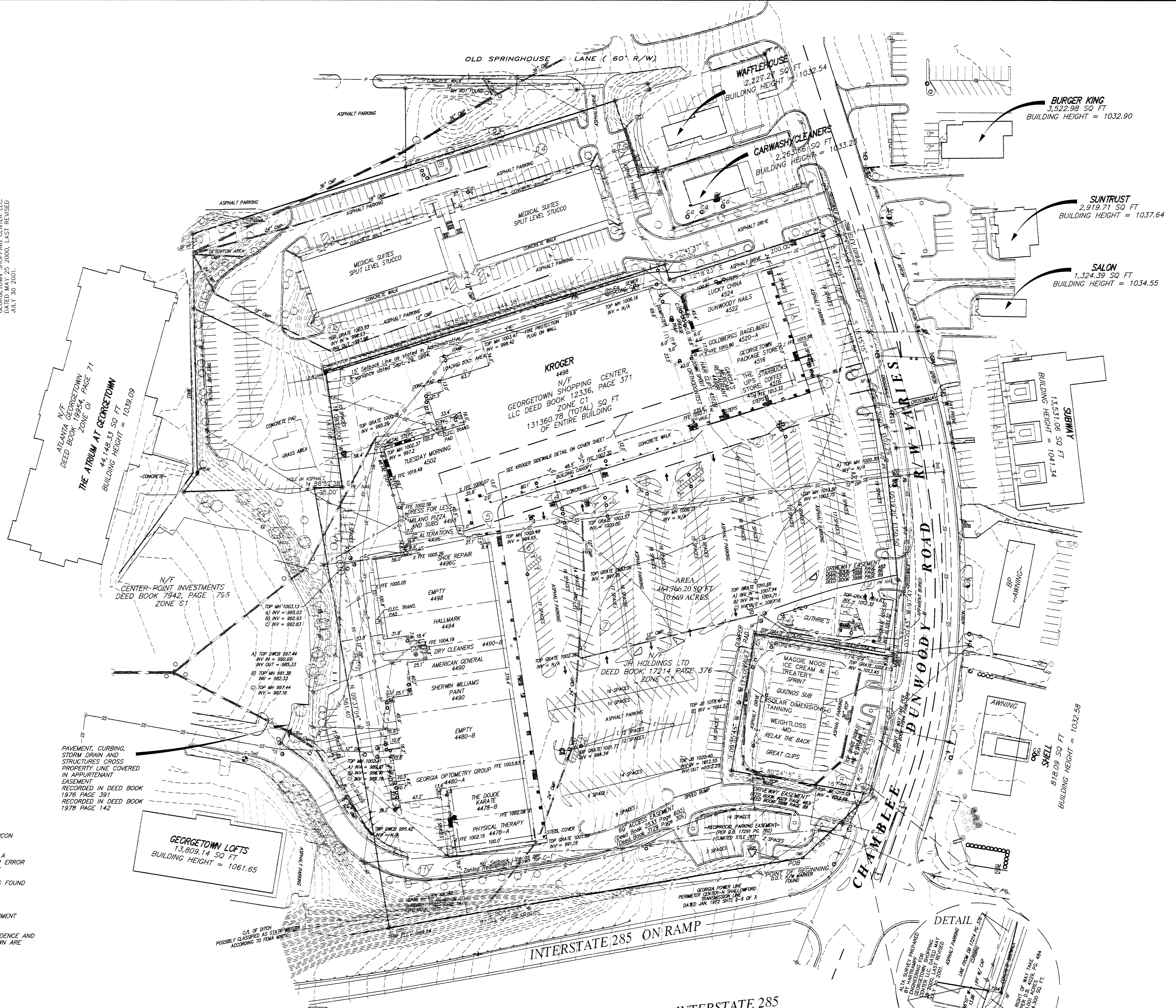
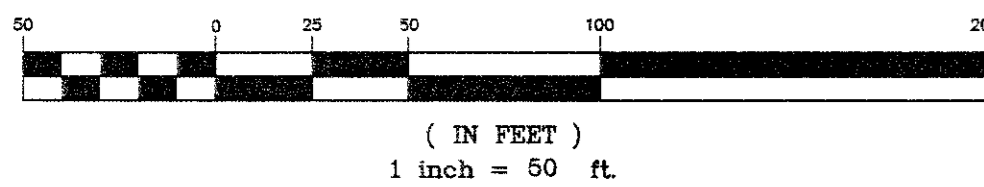
LEGEND

- P OVERHEAD POWER
- C/L CENTERLINE
- N/S NOT TO SCALE
- INV INVERT OF PIPE
- PHOTO LOCATION AND DIRECTION
- CMF CONCRETE MONUMENT FOUND
- CTP CRIMP TOP PIPE
- NF IRON PIN NOT FOUND AT TIME OF SURVEY
- OTIP OPEN TOP PIPE FOUND
- IPF IRON PIN FOUND
- POWER POLE
- SIGN
- TREE
- GAS VALVE
- SEWER MANHOLE
- IRRIGATION CONTROL VALVE
- LIGHT POLE
- GRATE
- WATER VALVE
- WATER METER
- GAS METER
- ELECTRIC METER
- SIGNAL POLE
- FIRE HYDRANT
- STORM MANHOLE
- CONCRETE MONUMENT FOUND
- TELEPHONE MANHOLE
- DOUBLE WING CATCH BASIN
- ELECTRIC BOX
- MONITORING WELL
- SINGLE WING CATCH BASIN
- TRANSFORMER
- TRAFFIC SIGNAL
- GREASE TRAP
- CALCULATED CORNER
- FLOW
- BOLLARD
- CLEAN OUT
- DOWNSPOUT FROM ROOF DRAIN

GENERAL NOTES

1. THE FIELD DATA FOR THIS SURVEY WAS COLLECTED USING A TOPCON GTS-303 TOTAL STATION.
2. THE FIELD DATA UPON WHICH THIS MAP OR PLAT IS BASED HAS A CLOSURE PRECISION OF ONE FOOT IN 58,000 FEET, AND AN ANGULAR ERROR OF 05" PER ANGLE POINT, AND WAS ADJUSTED USING COMPASS RULE.
3. THIS MAP OR PLAT HAS BEEN CALCULATED FOR CLOSURE AND IS FOUND TO BE ACCURATE WITHIN 1 FOOT IN 95,000 FEET.
4. DATE OF FIELD SURVEY: 8-23-10
5. THE VERTICAL DATUM WAS TAKEN FROM A DEKALB COUNTY MONUMENT NAMED WOODY WITH AN ELEVATION OF 1024.34.
6. ALL UNDERGROUND UTILITIES ARE BASED ON ABOVE GROUND EVIDENCE AND MAPS PROVIDED BY THE COUNTY AND ALL UNDERGROUND LINES SHOWN ARE APPROXIMATE.
7. PROPERTY IS LOCATED IN ZONE "X" ACCORDING TO FEMA MAP 13089C0012-H DATED MAY 7, 2001.

GRAPHIC SCALE

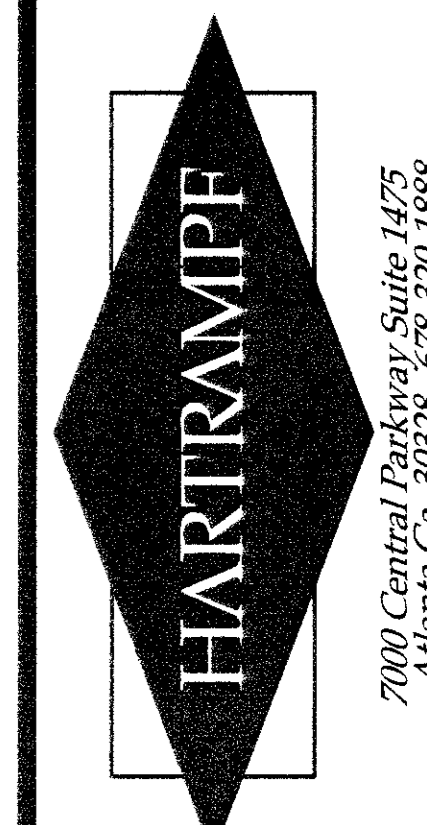


REVISIONS

Date	Description
11/09/10	ADDED PARKING SPACES TO MEDICAL COMPLEX

THE ORIGINAL OF THIS DOCUMENT WAS SEALED AND SIGNED BY LARRY P. ATKINSON. THIS REPRODUCTION IS NOT A CERTIFIED DOCUMENT.

THIS DOCUMENT, THE IDEAS AND DESIGNS INCORPORATED HEREIN, AS AN INSTRUMENT OF PROFESSIONAL SERVICE, IS THE PROPERTY OF HARTRAMP, INC. AND IS NOT TO BE USED IN WHOLE OR IN PART, FOR ANY OTHER PROJECT WITHOUT THE WRITTEN AUTHORIZATION OF HARTRAMP, INC.



ALTA/ACSM LAND TITLE SURVEY FOR
CORO REALTY ADVISORS, LLC
GEORGETOWN SHOPPING CENTER
 LOCATED IN LAND LOT 345
 18TH DISTRICT CITY OF DUNWOODY
 DEKALB COUNTY, GEORGIA

Drawn by RBM
 Checked by L.P.A.
 Date 8-30-10
 Job No. 10056.00
 Drawing Number