

Property Tax Information Results

Parcel ID : 18 343 01 001

Map

Print

Back

Land Data

Neighborhood	Commercial Land Use	Zoning	Unit Type	Unit Size	Effective Rate	Adjusted Value
6031 - 121	Apts Rm100 Primary	RM100 -	Square Foot	1,619,996.40	10.50	17,009,962

Building Information

Building #1 - Multiple Unit

Building Characteristics

Improvement Type	118-Apartment w/ 9 + Units	Condition	Average
Quality Grade	Good	Economic Obsolescence	0
Actual Year Built	1981	Functional Obsolescence	0

Building Refinements

Baths	0	Bedrooms	0	Basement Area	0	Finished Basement	0
Fireplaces	0	Air Conditioning	Yes	Number Story	2	Square Footage	8,204

Detail Type	Detail Description	No. of Units
Add On	ASPHALT PAV W/ CURB - LOW-FAIR	219,000
Add On	AVERAGE WOOD SIDING - EXTWALL	100
Add On	COMM POOL VERY GOOD - CPL	1,160
Add On	COMM TENNIS CT-ASPH W/FENCE-LIGHTS-AVG	2
Add On	GARAGE ATT - GAR	1,848
Add On	MEZZN-DIV FIN - MDF	192
Add On	PORCH OPEN - PHO	484
Add On	SHED VERY GOOD - SHD	304

Building #2 - Multiple Unit

Building Characteristics

Improvement Type	118-Apartment w/ 9 + Units	Condition	Average
Quality Grade	Good	Economic Obsolescence	0
Actual Year Built	1981	Functional Obsolescence	0

Building Refinements

Baths	0	Bedrooms	0	Basement Area	0	Finished Basement	0
Fireplaces	0	Air Conditioning	Yes	Number Story	2	Square Footage	8,204

Detail Type	Detail Description	No. of Units
Add On	AVERAGE WOOD SIDING - EXTWALL	100
Add On	GARAGE ATT - GAR	1,848
Add On	MEZZN-DIV FIN - MDF	192
Add On	PORCH OPEN - PHO	484

Building #3 - Multiple Unit

Building Characteristics

Improvement Type	118-Apartment w/ 9 + Units	Condition	Average
Quality Grade	Good	Economic Obsolescence	0
Actual Year Built	1981	Functional Obsolescence	0

Building Refinements

Baths	0	Bedrooms	0	Basement Area	0	Finished Basement	0
Fireplaces	0	Air Conditioning	Yes	Number Story	2	Square Footage	8,204

Detail Type	Detail Description	No. of Units
Add On	AVERAGE WOOD SIDING - EXTWALL	100
Add On	GARAGE ATT - GAR	1,848
Add On	MEZZN-DIV FIN - MDF	192
Add On	PORCH OPEN - PHO	484

Building #4 - Multiple Unit

Building Characteristics			
Improvement Type	118-Apartment w/9 + Units	Condition	Average
Quality Grade	Good	Economic Obsolescence	0
Actual Year Built	1981	Functional Obsolescence	0

Building Refinements					
Baths	0	Bedrooms	0	Basement Area	0
Fireplaces	0	Air Conditioning	Yes	Number Story	2
				Finished Basement	0
				Square Footage	8,204

Detail Type	Detail Description	No. of Units
Add On	AVERAGE WOOD SIDING - EXTWALL	100
Add On	GARAGE ATT - GAR	1,848
Add On	MEZZN-DIV FIN - MDF	192
Add On	PORCH OPEN - PHO	484

Building #5 - Multiple Unit

Building Characteristics			
Improvement Type	118-Apartment w/9 + Units	Condition	Average
Quality Grade	Good	Economic Obsolescence	0
Actual Year Built	1981	Functional Obsolescence	0

Building Refinements					
Baths	0	Bedrooms	0	Basement Area	0
Fireplaces	0	Air Conditioning	Yes	Number Story	2
				Finished Basement	0
				Square Footage	10,556

Detail Type	Detail Description	No. of Units
Add On	AVERAGE WOOD SIDING - EXTWALL	100
Add On	MEZZN-DIV FIN - MDF	96
Add On	PORCH OPEN - PHO	608

Building #6 - Multiple Unit

Building Characteristics			
Improvement Type	118-Apartment w/9 + Units	Condition	Average
Quality Grade	Good	Economic Obsolescence	0
Actual Year Built	1981	Functional Obsolescence	0

Building Refinements					
Baths	0	Bedrooms	0	Basement Area	2,457
Fireplaces	0	Air Conditioning	Yes	Number Story	2
				Finished Basement	0
				Square Footage	8,192

Detail Type	Detail Description	No. of Units
Add On	AVERAGE WOOD SIDING - EXTWALL	100
Add On	BSM OFF/APT FN - BS2	2,440
Add On	PORCH OPEN - PHO	192
Add On	STORAGE ATT - STG	96
Basement	Unfinished	2,457

Building #7 - Multiple Unit

Building Characteristics			
Improvement Type	118-Apartment w/9 + Units	Condition	Average
Quality Grade	Good	Economic Obsolescence	0
Actual Year Built	1981	Functional Obsolescence	0

Building Refinements							
Baths	0	Bedrooms	0	Basement Area	2,457	Finished Basement	0
Fireplaces	0	Air Conditioning	Yes	Number Story	2	Square Footage	8,192

Detail Type	Detail Description	No. of Units
Add On	AVERAGE WOOD SIDING - EXTWALL	100
Add On	BSM OFF/APT FN - BS2	2,440
Add On	PORCH OPEN - PHO	192
Add On	STORAGE ATT - STG	96
Basement	Unfinished	2,457

Building #8 - Multiple Unit

Building Characteristics			
Improvement Type	118-Apartment w/9 + Units	Condition	Average
Quality Grade	Good	Economic Obsolescence	0
Actual Year Built	1981	Functional Obsolescence	0

Building Refinements							
Baths	0	Bedrooms	0	Basement Area	2,457	Finished Basement	0
Fireplaces	0	Air Conditioning	Yes	Number Story	2	Square Footage	8,192

Detail Type	Detail Description	No. of Units
Add On	AVERAGE WOOD SIDING - EXTWALL	100
Add On	BSM OFF/APT FN - BS2	2,440
Add On	PORCH OPEN - PHO	192
Add On	STORAGE ATT - STG	96
Basement	Unfinished	2,457

Building #9 - Multiple Unit

Building Characteristics			
Improvement Type	118-Apartment w/9 + Units	Condition	Average
Quality Grade	Good	Economic Obsolescence	0
Actual Year Built	1981	Functional Obsolescence	0

Building Refinements							
Baths	0	Bedrooms	0	Basement Area	2,457	Finished Basement	0
Fireplaces	0	Air Conditioning	Yes	Number Story	2	Square Footage	8,192

Detail Type	Detail Description	No. of Units
Add On	AVERAGE WOOD SIDING - EXTWALL	100
Add On	BSM OFF/APT FN - BS2	2,440
Add On	PORCH OPEN - PHO	192
Add On	STORAGE ATT - STG	96
Basement	Unfinished	2,457

Building #10 - Multiple Unit

Building Characteristics			
--------------------------	--	--	--

Baths	0	Bedrooms	0	Basement Area	2,457	Finished Basement	0
Fireplaces	0	Air Conditioning	Yes	Number Story	2	Square Footage	8,192

Detail Type	Detail Description	No. of Units
Add On	AVERAGE WOOD SIDING - EXTWALL	100
Add On	BSM OFF/APT FN - BS2	2,440
Add On	PORCH OPEN - PHO	192
Add On	STORAGE ATT - STG	96
Basement	Unfinished	2,457

Building #14 - Multiple Unit

Building Characteristics			
Improvement Type	118-Apartment w/9 + Units	Condition	Average
Quality Grade	Good	Economic Obsolescence	0
Actual Year Built	1981	Functional Obsolescence	0

Building Refinements							
Baths	0	Bedrooms	0	Basement Area	2,457	Finished Basement	0
Fireplaces	0	Air Conditioning	Yes	Number Story	2	Square Footage	8,192

Detail Type	Detail Description	No. of Units
Add On	AVERAGE WOOD SIDING - EXTWALL	100
Add On	BSM OFF/APT FN - BS2	2,440
Add On	PORCH OPEN - PHO	192
Add On	STORAGE ATT - STG	96
Basement	Unfinished	2,457

Building #15 - Multiple Unit

Building Characteristics			
Improvement Type	118-Apartment w/9 + Units	Condition	Average
Quality Grade	Good	Economic Obsolescence	0
Actual Year Built	1981	Functional Obsolescence	0

Building Refinements							
Baths	0	Bedrooms	0	Basement Area	2,457	Finished Basement	0
Fireplaces	0	Air Conditioning	Yes	Number Story	2	Square Footage	8,192

Detail Type	Detail Description	No. of Units
Add On	AVERAGE WOOD SIDING - EXTWALL	100
Add On	BSM OFF/APT FN - BS2	2,440
Add On	PORCH OPEN - PHO	192
Add On	STORAGE ATT - STG	96
Basement	Unfinished	2,457

Building #16 - Multiple Unit

Building Characteristics			
Improvement Type	118-Apartment w/9 + Units	Condition	Average
Quality Grade	Good	Economic Obsolescence	0
Actual Year Built	1981	Functional Obsolescence	0

Building Refinements							
Baths	0	Bedrooms	0	Basement Area	2,457	Finished Basement	0
Fireplaces	0	Air Conditioning	Yes	Number Story	2	Square Footage	8,192

Detail Type	Detail Description	No. of Units
Add On	AVERAGE WOOD SIDING - EXTWALL	100

Add On	BSM OFF/APT FN - BS2	2,440
Add On	PORCH OPEN - PHO	192
Add On	STORAGE ATT - STG	96
Basement	Unfinished	2,457

Building #17 - Multiple Unit

Building Characteristics			
Improvement Type	118-Apartment w/9 + Units	Condition	Average
Quality Grade	Good	Economic Obsolescence	0
Actual Year Built	1981	Functional Obsolescence	0

Building Refinements							
Baths	0	Bedrooms	0	Basement Area	2,457	Finished Basement	0
Fireplaces	0	Air Conditioning	Yes	Number Story	2	Square Footage	8,192

Detail Type	Detail Description		No. of Units
Add On	AVERAGE WOOD SIDING - EXTWALL		100
Add On	BSM OFF/APT FN - BS2		2,440
Add On	PORCH OPEN - PHO		192
Add On	STORAGE ATT - STG		96
Basement	Unfinished		2,457

Building #18 - Multiple Unit

Building Characteristics			
Improvement Type	118-Apartment w/9 + Units	Condition	Average
Quality Grade	Good	Economic Obsolescence	0
Actual Year Built	1981	Functional Obsolescence	0

Building Refinements							
Baths	0	Bedrooms	0	Basement Area	3,825	Finished Basement	0
Fireplaces	0	Air Conditioning	Yes	Number Story	2	Square Footage	9,108

Detail Type	Detail Description		No. of Units
Add On	AVERAGE WOOD SIDING - EXTWALL		100
Add On	BALCONY - BAL		608
Add On	BSM OFF/APT FN - BS2		3,848
Add On	GARAGE ATT - GAR		1,320
Add On	MEZZN-DIV FIN - MDF		128
Add On	PORCH OPEN - PHO		608
Basement	Unfinished		3,825

Building #19 - Multiple Unit

Building Characteristics			
Improvement Type	118-Apartment w/9 + Units	Condition	Average
Quality Grade	Good	Economic Obsolescence	0
Actual Year Built	1981	Functional Obsolescence	0

Building Refinements							
Baths	0	Bedrooms	0	Basement Area	3,825	Finished Basement	0
Fireplaces	0	Air Conditioning	Yes	Number Story	2	Square Footage	9,108

Detail Type	Detail Description		No. of Units
Add On	AVERAGE WOOD SIDING - EXTWALL		100
Add On	BALCONY - BAL		608
Add On	BSM OFF/APT FN - BS2		3,848
Add On	GARAGE ATT - GAR		1,320

Add On	MEZZN-DIV FIN - MDF	128
Add On	PORCH OPEN - PHO	608
Basement	Unfinished	3,825

Building #20 - Multiple Unit

Building Characteristics			
Improvement Type	118-Apartment w/9 + Units	Condition	Average
Quality Grade	Good	Economic Obsolescence	0
Actual Year Built	1981	Functional Obsolescence	0

Building Refinements							
Baths	0	Bedrooms	0	Basement Area	3,825	Finished Basement	0
Fireplaces	0	Air Conditioning	Yes	Number Story	2	Square Footage	9,108

Detail Type	Detail Description		No. of Units
Add On	AVERAGE WOOD SIDING - EXTWALL		100
Add On	BALCONY - BAL		608
Add On	BSM OFF/APT FN - BS2		3,848
Add On	GARAGE ATT - GAR		1,320
Add On	MEZZN-DIV FIN - MDF		128
Add On	PORCH OPEN - PHO		608
Basement	Unfinished		3,825

Building #21 - Multiple Unit

Building Characteristics			
Improvement Type	118-Apartment w/9 + Units	Condition	Average
Quality Grade	Good	Economic Obsolescence	0
Actual Year Built	1981	Functional Obsolescence	0

Building Refinements							
Baths	0	Bedrooms	0	Basement Area	0	Finished Basement	0
Fireplaces	0	Air Conditioning	Yes	Number Story	2	Square Footage	10,182

Detail Type	Detail Description		No. of Units
Add On	AVERAGE WOOD SIDING - EXTWALL		100
Add On	MEZZN-DIV FIN - MDF		192
Add On	PORCH OPEN - PHO		608

Building #22 - Multiple Unit

Building Characteristics			
Improvement Type	118-Apartment w/9 + Units	Condition	Average
Quality Grade	Good	Economic Obsolescence	0
Actual Year Built	1981	Functional Obsolescence	0

Building Refinements							
Baths	0	Bedrooms	0	Basement Area	3,430	Finished Basement	0
Fireplaces	0	Air Conditioning	Yes	Number Story	2	Square Footage	8,072

Detail Type	Detail Description		No. of Units
Add On	AVERAGE WOOD SIDING - EXTWALL		100
Add On	BALCONY - BAL		490
Add On	BSM OFF/APT FN - BS2		3,450
Add On	GARAGE ATT - GAR		1,764
Add On	MEZZN-DIV FIN - MDF		192
Add On	PORCH OPEN - PHO		490
Basement	Unfinished		3,430

Building #23 - Multiple Unit**Building Characteristics**

Improvement Type	118-Apartment w/9 + Units	Condition	Average
Quality Grade	Good	Economic Obsolescence	0
Actual Year Built	1981	Functional Obsolescence	0

Building Refinements

Baths	0	Bedrooms	0	Basement Area	3,524	Finished Basement	0
Fireplaces	0	Air Conditioning	Yes	Number Story	2	Square Footage	9,656

Detail Type	Detail Description	No. of Units
Add On	AVERAGE WOOD SIDING - EXTWALL	100
Add On	BALCONY - BAL	500
Add On	BSM OFF/APT FN - BS2	3,546
Add On	MEZZN-DIV FIN - MDF	160
Add On	PORCH OPEN - PHO	500
Basement	Unfinished	3,524

Building #24 - Multiple Unit**Building Characteristics**

Improvement Type	118-Apartment w/9 + Units	Condition	Average
Quality Grade	Good	Economic Obsolescence	0
Actual Year Built	1981	Functional Obsolescence	0

Building Refinements

Baths	0	Bedrooms	0	Basement Area	3,524	Finished Basement	0
Fireplaces	0	Air Conditioning	Yes	Number Story	2	Square Footage	9,656

Detail Type	Detail Description	No. of Units
Add On	AVERAGE WOOD SIDING - EXTWALL	100
Add On	BALCONY - BAL	500
Add On	BSM OFF/APT FN - BS2	3,546
Add On	MEZZN-DIV FIN - MDF	160
Add On	PORCH OPEN - PHO	500
Basement	Unfinished	3,524

Building #25 - Multiple Unit**Building Characteristics**

Improvement Type	118-Apartment w/9 + Units	Condition	Average
Quality Grade	Good	Economic Obsolescence	0
Actual Year Built	1981	Functional Obsolescence	0

Building Refinements

Baths	0	Bedrooms	0	Basement Area	3,524	Finished Basement	0
Fireplaces	0	Air Conditioning	Yes	Number Story	2	Square Footage	9,656

Detail Type	Detail Description	No. of Units
Add On	AVERAGE WOOD SIDING - EXTWALL	100
Add On	BALCONY - BAL	500
Add On	BSM OFF/APT FN - BS2	3,546
Add On	MEZZN-DIV FIN - MDF	160
Add On	PORCH OPEN - PHO	500
Basement	Unfinished	3,524

Building #26 - Multiple Unit

Building Characteristics			
Improvement Type	118-Apartment w/9 + Units	Condition	Average
Quality Grade	Good	Economic Obsolescence	0
Actual Year Built	1981	Functional Obsolescence	0

Building Refinements							
Baths	0	Bedrooms	0	Basement Area	3,524	Finished Basement	0
Fireplaces	0	Air Conditioning	Yes	Number Story	2	Square Footage	9,656

Detail Type	Detail Description	No. of Units
Add On	AVERAGE WOOD SIDING - EXTWALL	100
Add On	BALCONY - BAL	500
Add On	BSM OFF/APT FN - BS2	3,546
Add On	MEZZN-DIV FIN - MDF	160
Add On	PORCH OPEN - PHO	500
Basement	Unfinished	3,524

Building #27 - Multiple Unit

Building Characteristics			
Improvement Type	118-Apartment w/9 + Units	Condition	Average
Quality Grade	Good	Economic Obsolescence	0
Actual Year Built	1981	Functional Obsolescence	0

Building Refinements							
Baths	0	Bedrooms	0	Basement Area	3,485	Finished Basement	0
Fireplaces	0	Air Conditioning	Yes	Number Story	2	Square Footage	11,064

Detail Type	Detail Description	No. of Units
Add On	AVERAGE WOOD SIDING - EXTWALL	100
Add On	BALCONY - BAL	474
Add On	BSM OFF/APT FN - BS2	3,466
Add On	MEZZN-DIV FIN - MDF	160
Add On	PORCH OPEN - PHO	474
Basement	Unfinished	3,485

Building #28 - Multiple Unit

Building Characteristics			
Improvement Type	118-Apartment w/9 + Units	Condition	Average
Quality Grade	Good	Economic Obsolescence	0
Actual Year Built	1981	Functional Obsolescence	0

Building Refinements							
Baths	0	Bedrooms	0	Basement Area	3,485	Finished Basement	0
Fireplaces	0	Air Conditioning	Yes	Number Story	2	Square Footage	11,064

Detail Type	Detail Description	No. of Units
Add On	AVERAGE WOOD SIDING - EXTWALL	100
Add On	BALCONY - BAL	474
Add On	BSM OFF/APT FN - BS2	3,466
Add On	MEZZN-DIV FIN - MDF	160
Add On	PORCH OPEN - PHO	474
Basement	Unfinished	3,485

Building #29 - Multiple Unit

Building Characteristics			
Improvement Type	118-Apartment w/9 + Units	Condition	Average
Quality Grade	Good	Economic Obsolescence	0
Actual Year Built	1981	Functional Obsolescence	0

Building Refinements							
Baths	0	Bedrooms	0	Basement Area	3,485	Finished Basement	0
Fireplaces	0	Air Conditioning	Yes	Number Story	2	Square Footage	11,064

Detail Type	Detail Description	No. of Units
Add On	AVERAGE WOOD SIDING - EXTWALL	100
Add On	BALCONY - BAL	474
Add On	BSM OFF/APT FN - BS2	3,466
Add On	MEZZN-DIV FIN - MDF	160
Add On	PORCH OPEN - PHO	474
Basement	Unfinished	3,485

Building #30 - Multiple Unit

Building Characteristics			
Improvement Type	118-Apartment w/9 + Units	Condition	Average
Quality Grade	Good	Economic Obsolescence	0
Actual Year Built	1981	Functional Obsolescence	0

Building Refinements							
Baths	0	Bedrooms	0	Basement Area	0	Finished Basement	0
Fireplaces	0	Air Conditioning	Yes	Number Story	2	Square Footage	9,296

Detail Type	Detail Description	No. of Units
Add On	AVERAGE WOOD SIDING - EXTWALL	100
Add On	PORCH OPEN - PHO	672
Add On	STORAGE ATT - STG	96

Building #31 - Commercial

Building Characteristics				
Blt As	311 - Clubhouse	Structure Type	D - Wood Frame	
Blt As SF	1,763	Stories	1	
Actual Year Built	1981	Basement %	1	
Functional Obsolescence	0	Economic Obsolescence	0	
Wall Height	HVAC	Sprinkler	Condition	Quality Grade
10	Y	N	Average	Good

Detail Type	Detail Description	No. of Units
Add On	AVERAGE WOOD SIDING - EXTWALL	100

Building #32 - Commercial

Building Characteristics				
Blt As	435 - Car Wash - Drive thru	Structure Type	D - Wood Frame	
Blt As SF	280	Stories	1	
Actual Year Built	1981	Basement %	1	
Functional Obsolescence	0	Economic Obsolescence	0	
Wall Height	HVAC	Sprinkler	Condition	Quality Grade
12	N	N	Average	Good

Detail Type	Detail Description	No. of Units
-------------	--------------------	--------------

Add On	CONCRETE BLOCK - EXTWALL	100
Add On	STORAGE ATT - STG	80

Building Permit Data

Permit Number	Permit Date	Completion Date	Permit Amount	Description
154026	10/1/1988	12/28/1988	589,680	2-NFS KP
154027	10/1/1988	12/28/1988	20,000	2-NFS KP
154028	1/21/1997	2/2/1998	50,000	DEMOLITION

History of Values

Tax Year	Land Value	Building Value	Miscellaneous Improvement Value	Total Value
2010	17,009,900	6,794,800	0	23,804,700
2009	12,591,100	11,086,100	127,500	23,804,700
2008	12,591,100	11,086,100	127,500	23,804,700
2007	11,339,900	12,676,920	134,900	24,151,720
2006	11,339,900	12,676,920	134,900	24,151,720
2005	11,339,900	12,676,920	134,900	24,151,720

[For information on property characteristics, contact \(404\) 371-2471.](#)

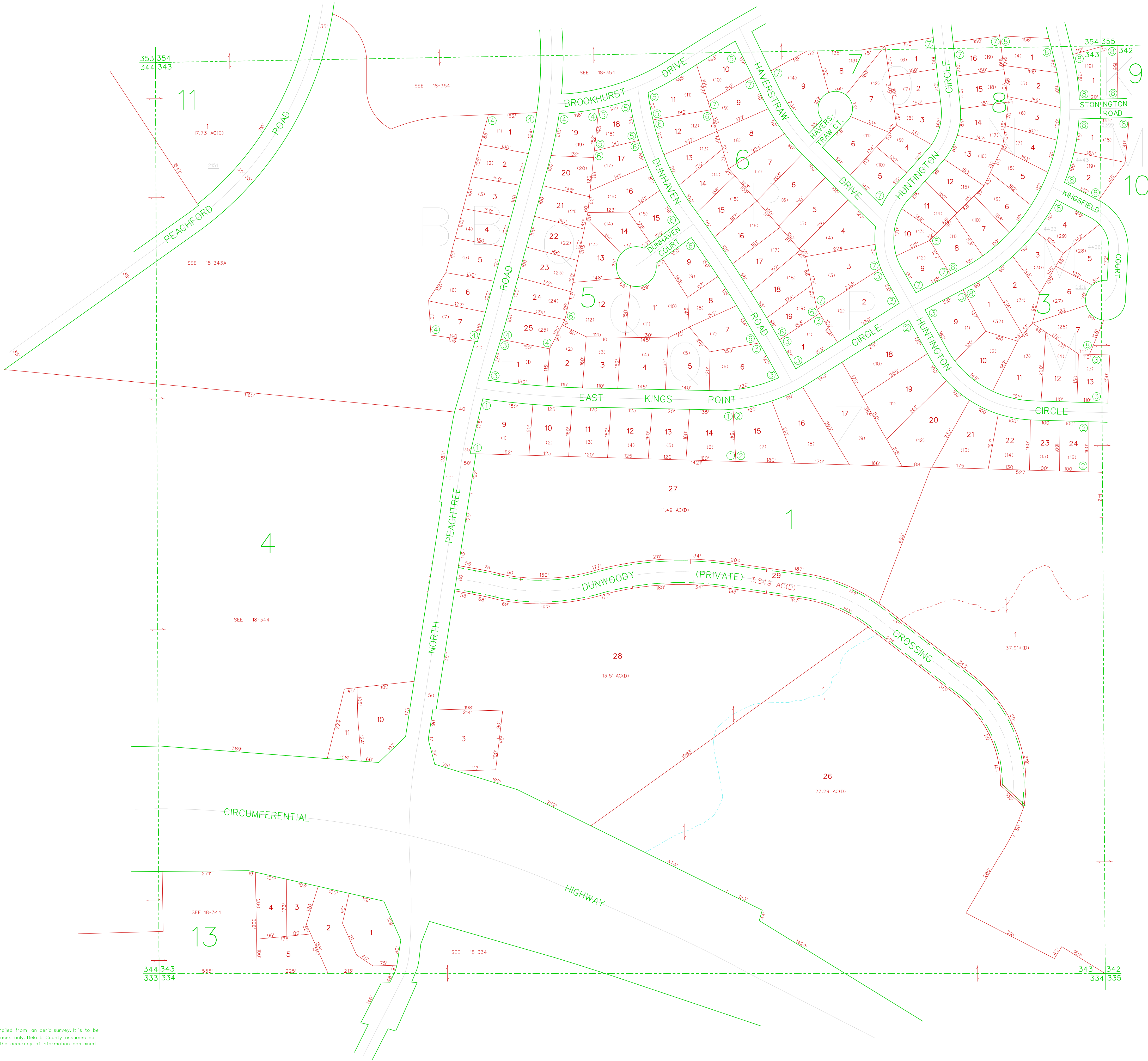
[Back](#)

Broadstone of Dunwoody



2311 Dunwoody Crossing

- 27 Buildings
- 802 Units
- 13.51 Acres
- 59.36 Units per Acre



- ① DUNWOODY NORTH S/D • 1
- ② DUNWOODY NORTH S/D • 2
- ③ DUNWOODY NORTH S/D • 3
- ④ DUNWOODY NORTH S/D • 4-A
- ⑤ DUNWOODY NORTH S/D • 5
- ⑥ DUNWOODY NORTH S/D • 6
- ⑦ DUNWOODY NORTH S/D • 7
- ⑧ DUNWOODY NORTH S/D • 8

This Map was compiled from an aerial survey. It is to be used for tax purposes only. DeKalb County assumes no responsibility for the accuracy of information contained herein.