
MEMORANDUM

To: Mayor and City Council

From: Michael Smith, Public Works Director

Date: 9/26/2011

Subject: **Approval of Contract for Sidewalk Construction-Happy Hollow and Valley View**

ITEM DESCRIPTION

Approval of a sidewalk construction contract for \$166,370 with Cotangent Technical Services funded from the 2011 Capital Project budget.

BACKGROUND

The City budgeted \$350,000 in the 2011 capital budget for sidewalk construction. Preliminary design plans for the Happy Hollow and Valley View segments were presented at a public information meeting in July. Based on the input provided at the public meeting, a complete set of bid documents was prepared for these segments and a bid for construction was advertised in August. Bids were received from 14 contractors on September 1, 2011. A low bid of \$166,370 was submitted by Cotangent Technical Services, Inc. A tabulation of all bids is included as Attachment A.

FUNDING

Funding is available in the 2011 capital sidewalk budget line item for the Happy Hollow and Valley View sidewalk segments.

RECOMMENDED ACTION

Staff respectfully requests that Council: (1) award a contract to Cotangent Technical Services, Inc. for construction of the Happy Hollow and Valley View sidewalks; (2) authorize staff to provide funding for the contracts including a \$20,000 landscaping allowance to replant trees and shrubs as necessary; and (3) authorize the City Manager to execute the necessary documents following satisfactory review by legal counsel.

ITB 11-33 Happy Hollow and Valley View Sidewalk Construction

		Cotangent Technical Services, LLC	Summit Construction and Development, LLC	Curb-Tech, Inc	Southeast Grading and Hauling	Tople Construction and Engineering, Inc.	Tri Scapes, Inc
Happy Hollow Sidewalk Construction	Lump Sum	\$ 106,364.07	\$ 116,734.27	\$ 125,845.00	\$ 134,784.11	\$ 146,500.00	\$ 134,880.00
Valley View Sidewalk Construction	Lump Sum	\$ 60,005.00	\$ 75,522.64	\$ 70,125.00	\$ 74,332.62	\$ 64,500.00	\$ 90,075.00
	TOTAL LUMP SUM	\$ 166,369.07	\$ 192,256.91	\$ 195,970.00	\$ 209,116.73	\$ 211,000.00	\$ 224,955.00

Additional ADA Curb Ramp Retrofits, as needed
Additional Driveway Replacement, as needed

Each	\$	1,250.00	\$	550.00	\$	500.00	\$	1,500.00	\$	1,500.00	\$	750.00
SF	\$	35.00	\$	4.75	\$	5.00	\$	8.00	\$	6.25	\$	7.50

*Non-responsive, did not use revised bid tab

ITB 11-33 Happy Hollow and Valley View Sidewalk Construction

Happy Hollow Sidewalk Construction	Lump Sum											
Valley View Sidewalk Construction	Lump Sum											
	TOTAL LUMP SUM											

Additional ADA Curb Ramp Retrofits, as needed	Each	\$	1,200.00	\$	500.00	\$	500.00	\$	1,361.03	\$	450.00	\$	500.00	\$	1,000.00
Additional Driveway Replacement, as needed	SF	\$	5.00	\$	5.25	\$	4.00	\$	5.92	\$	4.00	\$	3.50	\$	7.00

*Non-responsive, did not use revised bid tab

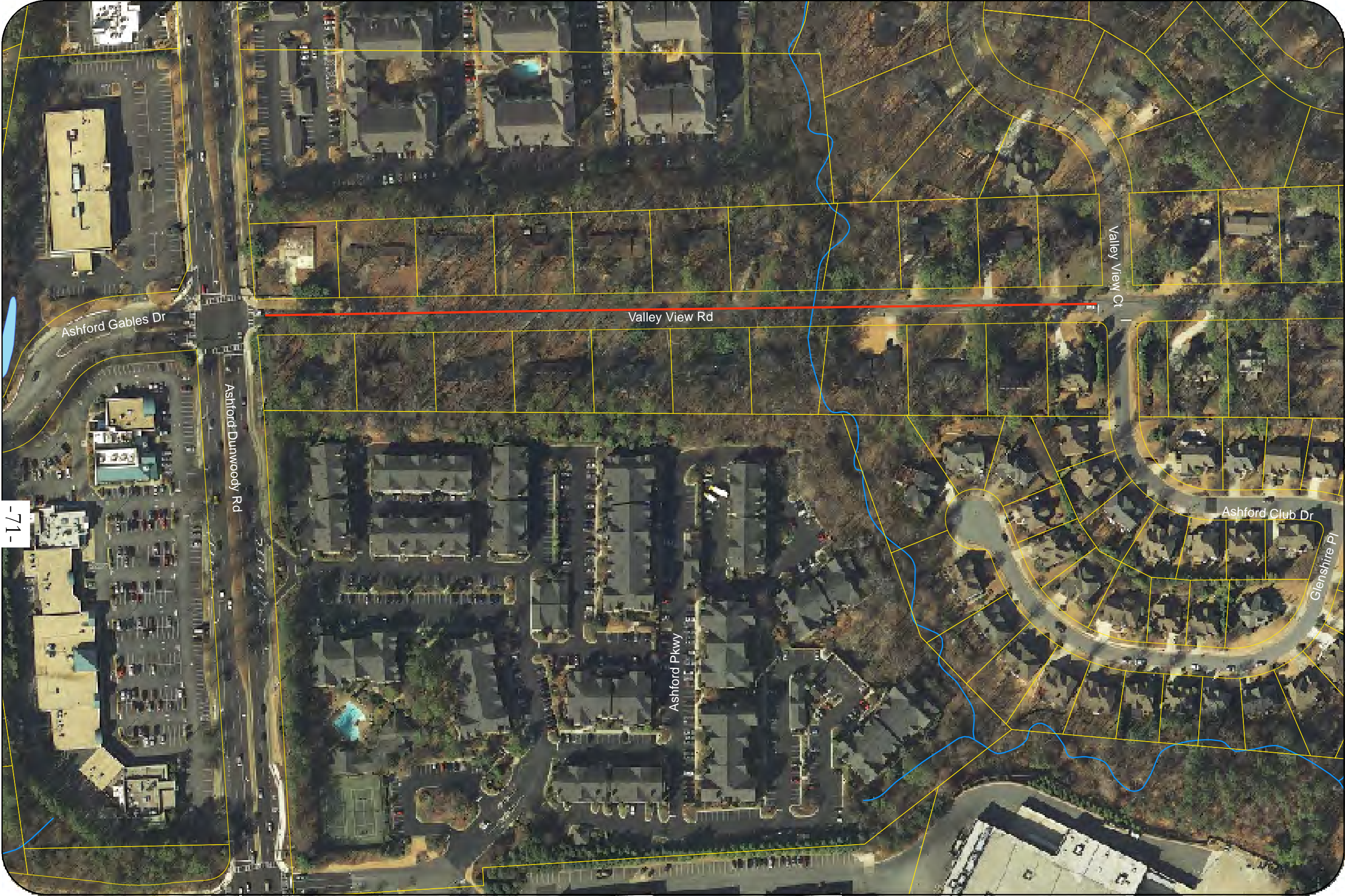
ITB 11-33 Happy Hollow and Valley View Sidewalk Construction

		Johnson Landscap es, Inc*
Happy Hollow Sidewalk Construction	Lump Sum	
Valley View Sidewalk Construction	Lump Sum	
	TOTAL LUMP SUM	

Additional ADA Curb Ramp Retrofits, as needed
Additional Driveway Replacement, as needed

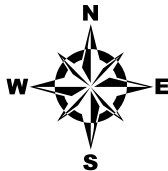
Each
SF

*Non-responsive, did not use revised bid tab



Legend

- Proposed Sidewalk Seg.
- Parcels
- Stream
- Lakes



0 75 150 Feet



Legal Notifications:
1. This map is the property of the City of Dunwoody, Georgia. The use of this map is granted solely upon the condition that the map will not be sold, copied, or printed for resale without the express written permission of the City. This map is a proprietary product of the City of Dunwoody. In no event will the City and/or its GIS Mapping Consultants be liable for damages arising from the use of or inability to use this map.
2. This map is a graphical representation of the data obtained from a variety of sources such as aerial photography, recorded deeds, plats, engineering drawings and other public records or data. The City of Dunwoody does not warrant the accuracy or currency of the map provided and does not guarantee the suitability of the map for any purpose, expressed or implied.
3. ALL DATA IS PROVIDED AS IS, WITH ALL FAULTS, WITHOUT WARRANTY OF ANY KIND, EITHER EXPRESSED OR IMPLIED, INCLUDING, BUT NOT LIMITED TO, THE IMPLIED WARRANTIES OF MERCHANTABILITY OR FITNESS FOR A PARTICULAR PURPOSE.

4. This map is not intended to depict boundary line discrepancies, lines of possession, or any other matters that arise and accurate land survey of the premises would disclose.
5. County, municipal, land lot and easement boundaries are approximate. It is the responsibility of the map user to verify boundaries with the appropriate governmental office.
Production Notes:
1. This map was compiled from records that have been filed with DeKalb County and/or the City by various parties. Neither the City nor its GIS Mapping Consultants prepared said records or make any representations or assume any responsibility for the accuracy of the information contained in this map.
2. The compilation methods employed during the production of this map include, but are not limited to, the following: collection of mapping processes, plan and/or deed research, coordinate geometry, traditional and GPS field surveys and orthophoto rectification.

Aerial Imagery Notes:
1. Orthophoto imagery was created using aerial photography taken on February 2010. The unprocessed imagery contains some degree of error in geometry (geometric distortion) and in the measured brightness of the pixels (radiometric distortion). Image rectification and restoration algorithms are applied during image processing to reduce the distortions and degradations that result from the original image acquisition. However, not all of the potential distortions and/or degradations will be corrected during this process. Therefore, exact interpretation of the map image features will require field verification by the map user.
Map Reference System Notes:
1. Horizontal coordinates are referenced to the Georgia West Zone State Plane Coordinate System relative to the North American Datum of 1983 (NAD83).
2. Vertical coordinates are referenced to the North American Vertical Datum of 1988 (NAVD88).

Revisions:
1. This map will be revised periodically by the City of Dunwoody. Should the user find conditions other than as shown, the City would appreciate your input. Simply copy the area in question, and your proposed revision under correction, and send the information to the City.

MAP NOTES:
1. The parcel data contained in this map, including the names of the areas, is based on spatial and deed information as of December 20, 2010.

Copyright:
No part of this publication may be reproduced, stored in a retrieval system, or transmitted, in any form or by any means, electronic, mechanical, photocopying, recording, or otherwise, without the prior written permission of the City of Dunwoody. The unauthorized reproduction or distribution of this document is illegal. Criminal copyright infringement, including infringement without any monetary gain, is investigated by the FBI and is punishable by up to five (5) years in federal prison and a fine of \$250,000.

Copyright (C) 2010, by the City of Dunwoody
All Rights Reserved