

---

**MEMORANDUM**

**To:** Mayor and City Council

**From:** Michael Smith, Public Works Director

**Date:** 1/9/2012

**Subject:** **Discussion of Winter Storm Response Plan**

---

**ITEM DESCRIPTION**

Council has requested a briefing on Public Works' plans for winter storm response.

**BACKGROUND**

The Public Works Department has a written Emergency Response Plan that provides general guidelines and protocol in the event of emergencies such as winter storms. The City's treatment of icy roads has evolved from isolated spot application of ice melt during the first year of incorporation to a comprehensive snow and ice removal plan today.

**EQUIPMENT**

The Public Works' road maintenance contractor has assembled a fleet of two snow plows and three salt spreaders dedicated to the City during winter storm events. The equipment is owned and maintained by the contractor with the City paying a daily rental fee only when the equipment is in use. Public Works maintains a 20 to 25-ton stockpile of rock salt for use in the salt spreaders. All other City maintenance contractors are required to provide personnel and at least one all wheel drive vehicle to assist during winter storm events.

**COORDINATION**

Public Works' personnel are available around the clock during an event and coordinate closely with the City Manager and Police prior to and during an actual storm event. Public Works also participates in regional coordination of winter storm response with the Georgia Department of Transportation (GDOT) and other local governments. Earlier this year the GDOT set up an internal website that reports on regional road conditions and the City of Dunwoody has access to that website.

**ROAD TREATMENT PLAN**

Based on the experience of the last few winters, the Department has created the enclosed map that shows areas of persistent icing. The areas shown on major roads will be targeted first for treatment followed by other segments of major roads. It has been the City's policy to focus its on treatment of the major roads and stay out of the neighborhoods except in unusual circumstances. There are several reasons for this:

1. The City maintains approximately 145 miles of roadway with over 80% of the mileage on residential streets. Attempting to clear all of the icy conditions in every neighborhood would require a much higher investment of resources by the City.
2. Many neighborhood streets in Dunwoody have much steeper grades than the major roads making them difficult to navigate during icy conditions even for snow removal equipment. Often cars are abandoned after getting stuck trying to make it up these hills making it even more dangerous for snow removal equipment.
3. Vehicle traffic often helps to improve road conditions after it has been treated. At the outset of a prolonged freeze such as last winter, a single treatment is not likely to be effective on low traffic volume neighborhood streets.

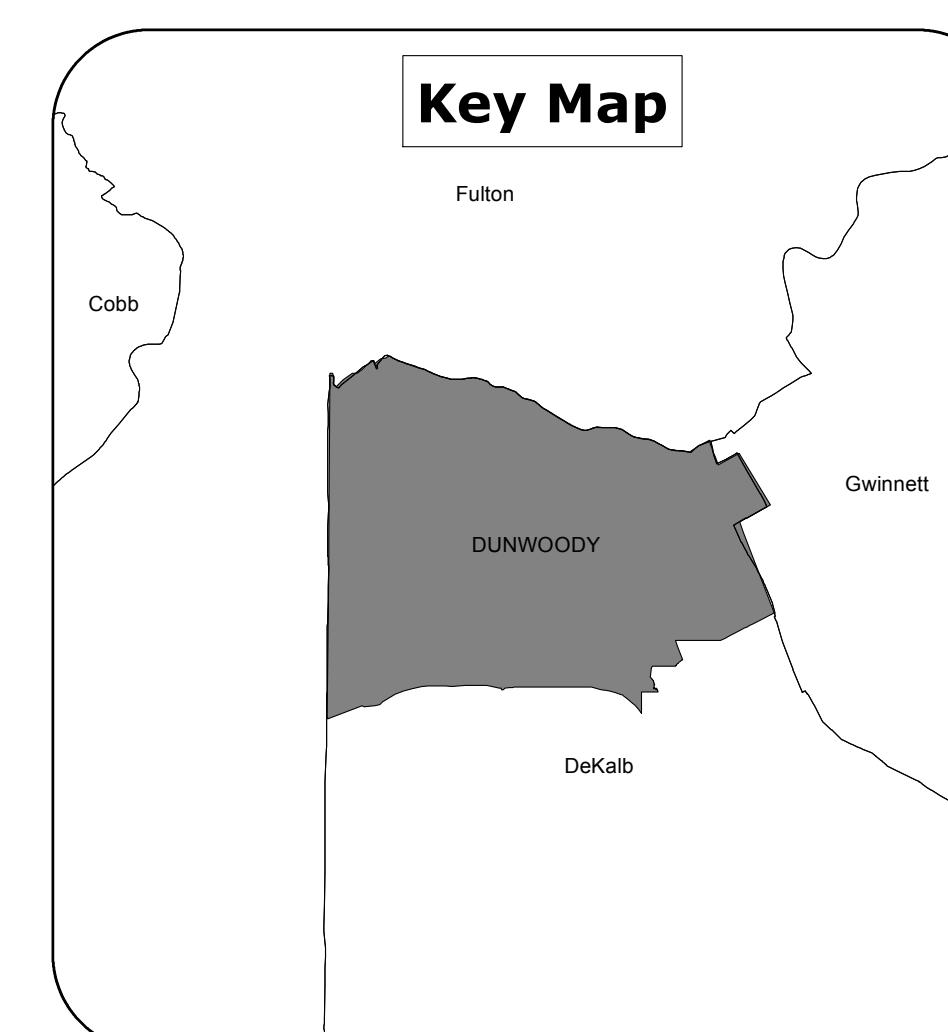
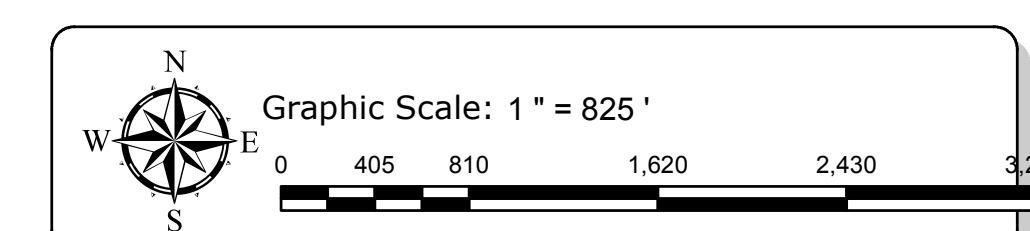
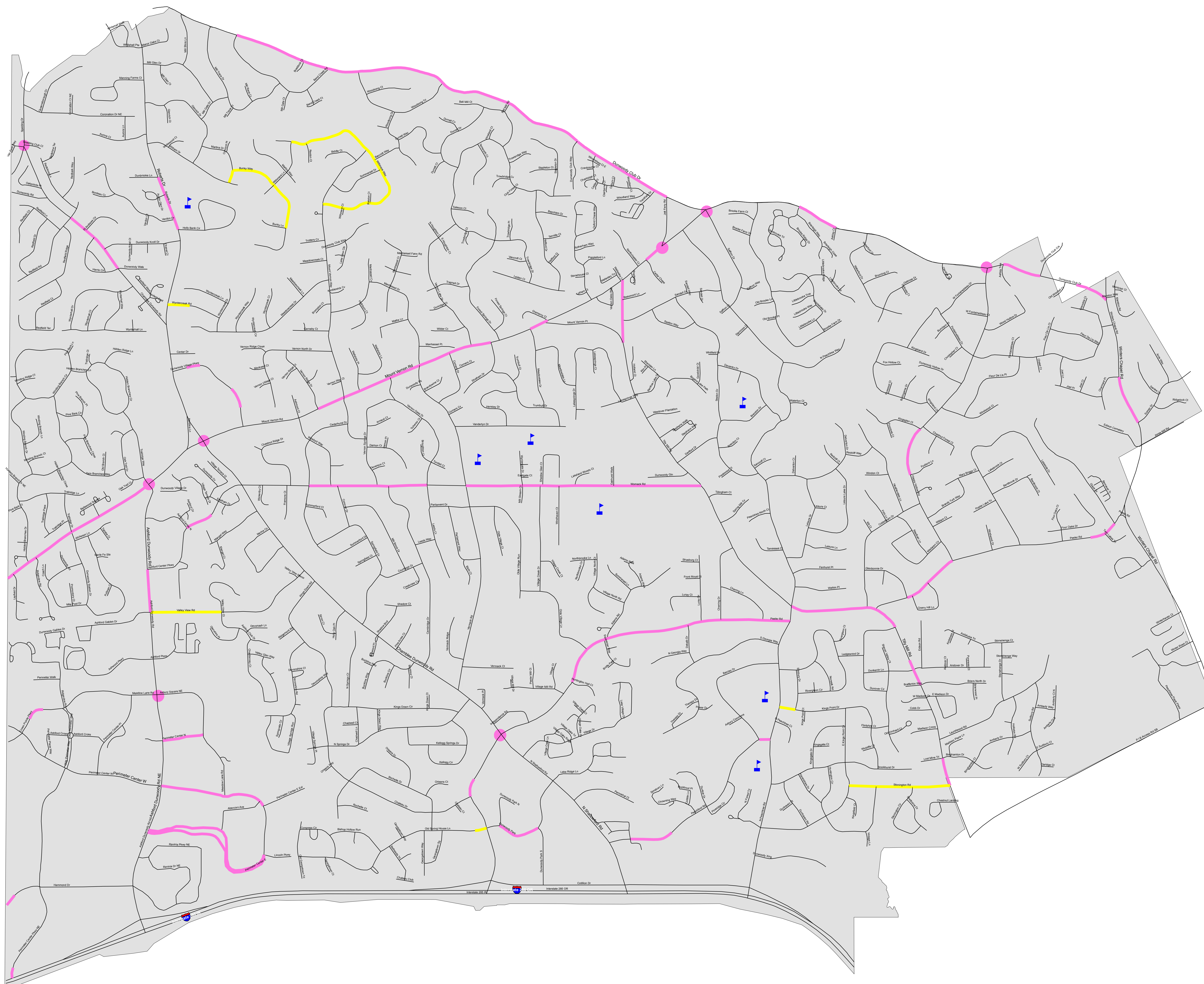
**Road Map**

**Roads of Dunwoody with Persistent Icing**

March 11, 2011

**Legend**

- Dunwoody City Limits
- Schools
- Roads
- Icing**
- Major
- Residential
- Intersections



**Legal Notifications:**

- This map is the property of the City of Dunwoody, Georgia. The use of this map is granted solely upon the condition that the map will not be sold, copied, or printed for resale without the express written permission of the City. This map is a proprietary product of the City of Dunwoody. It is made available to the City and/or its contracting Consultants for the use of or liability to use this map.
- This map is a graphical representation of the data obtained from a variety of sources such as aerial photography, ground photo, GIS, engineering drawings and other digital records or data. The City of Dunwoody does not warrant the accuracy or currency of the map provided and does not guarantee the suitability of the map for any purpose, expressed or implied.
- ALL DATA IS PROVIDED AS IS, WITH ALL FAULTS, WITHOUT WARRANTY OF ANY KIND, EITHER EXPRESS OR IMPLIED, INCLUDING, BUT NOT LIMITED TO, THE IMPLIED WARRANTIES OF MERCHANTABILITY OR FITNESS FOR A PARTICULAR PURPOSE.

- This map is not intended to depict boundary line discrepancies, lines of possession, or any other matters that a true and accurate land survey of the premises would disclose.
- County, municipal, land lot and easement boundaries are approximate. It is the responsibility of the map user to verify boundaries with the appropriate governmental office.

**Production Notes:**

- This map was compiled from records that have been filed with DeKalb County and/or the City by various parties. Neither the City nor its GIS/Mapping consultants engaged and/or hired by the City of Dunwoody are responsible for the accuracy of the information contained in the map.
- The compilation methods employed during the production of this map include, but are not limited to, the following geospatial mapping processes: GIS and/or field research, coordinate geometry, traditional and GPS field surveys and orthophoto rectification.

**Aerial Imagery Notes:**

- Orthophoto imagery was received using aerial photographs taken February 2010. The unprocessed imagery contains some degree of error or geometry (geometric distortion) and is the measured length of the ground (radiometric distortion). Image modification and restoration algorithms are applied during image processing to reduce the distortion and other errors that result from the original acquisition. However, not all of the potential distortions and/or degradations will be corrected during this process. Therefore, exact interpretation of the map image features will require field verification by the map user.

**Map Reference System Notes:**

- Horizontal coordinates are referenced to the Georgia State Plane Coordinate System (measured to the North American Datum of 1983 (NAD83)).
- Vertical coordinates are referenced to the North American Vertical Datum of 1988 (NAVD88).

**Revisions:**

- This map will be revised periodically by the City of Dunwoody. Should the user find conditions other than as shown, the City would appreciate your input. Simply copy the area in question, add your proposed revision and/or correction, and send the information to the City.

**MAP NOTES:**

- The road icing data contained in this map is based on spatial information as of January 2011.

**Copyright:**  
 No part of this publication may be reproduced, stored in a retrieval system, or transmitted, in any form or by any means, electronic, mechanical, photocopying, recording, or otherwise, without the prior written permission of the City of Dunwoody. The mechanical reproduction or distribution of this copyrighted work is illegal. Unlawful copyright infringement, including infringement without any monetary gain, is investigated by the FBI and is punishable by up to five (5) years in federal prison and a fine of \$250,000.  
 Copyright (C) 2010, by the City of Dunwoody  
 All Rights Reserved

Map Edition:  
 Map Publication Date:  
 March 11, 2011

Map Sheet:  
**ROAD-1**