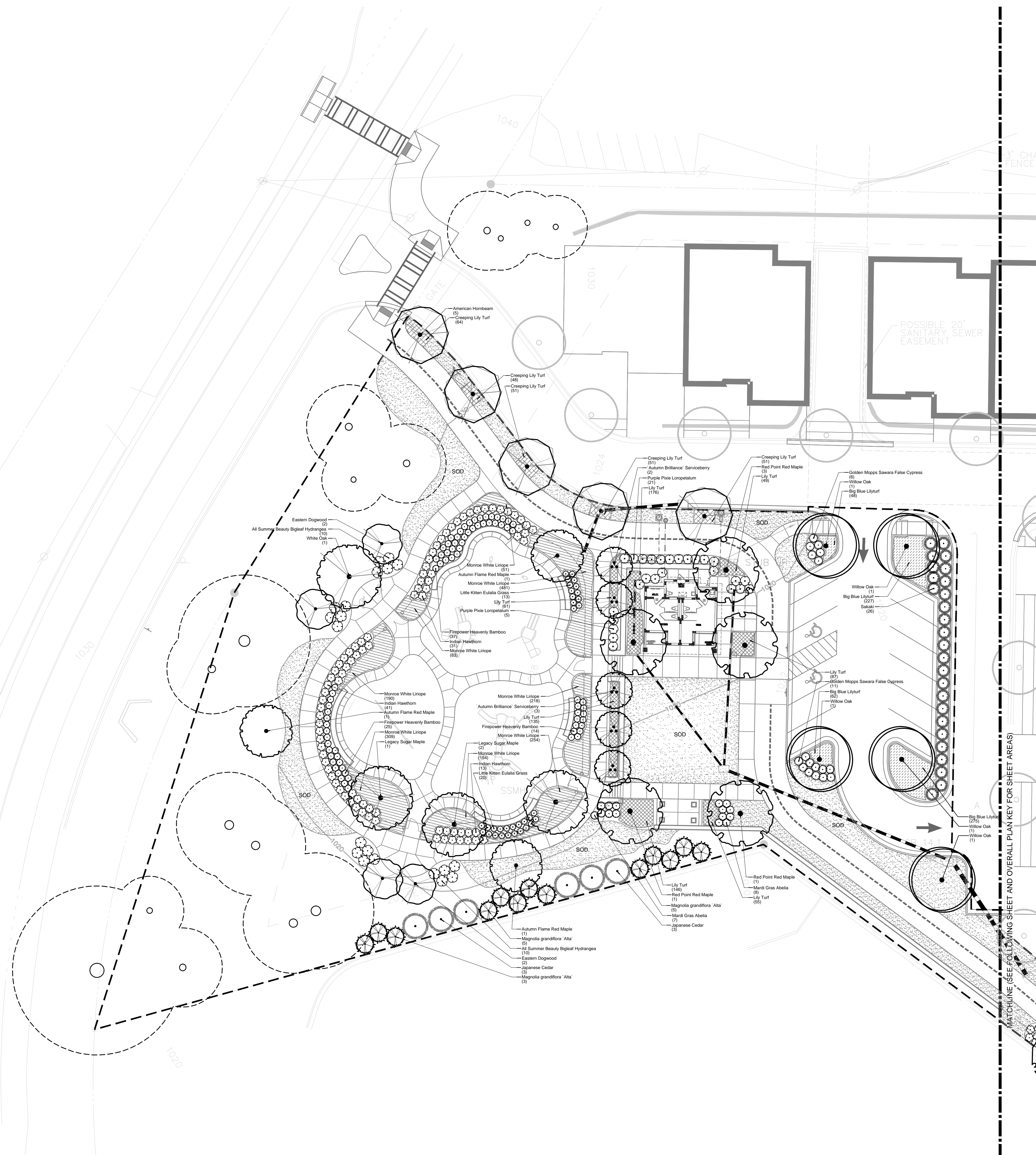


Drawing name: K:\AMT_LRP\019124002_Dunwoody_Ren_Park\CAD\CAD\CONSTR\L2-00_TREE REPLACEMENT PLAN.dwg L2-00 Jan 16, 2013 4:22pm by: aaron.legg

This document, together with the concepts and designs presented herein, is intended only for the specific purpose and client for which it was prepared. Reuse of and improper reliance on this document without written authorization and adaptation by Kimley-Horn and Associates, Inc. shall be without liability to Kimley-Horn and Associates, Inc.



PLANT SCHEDULE

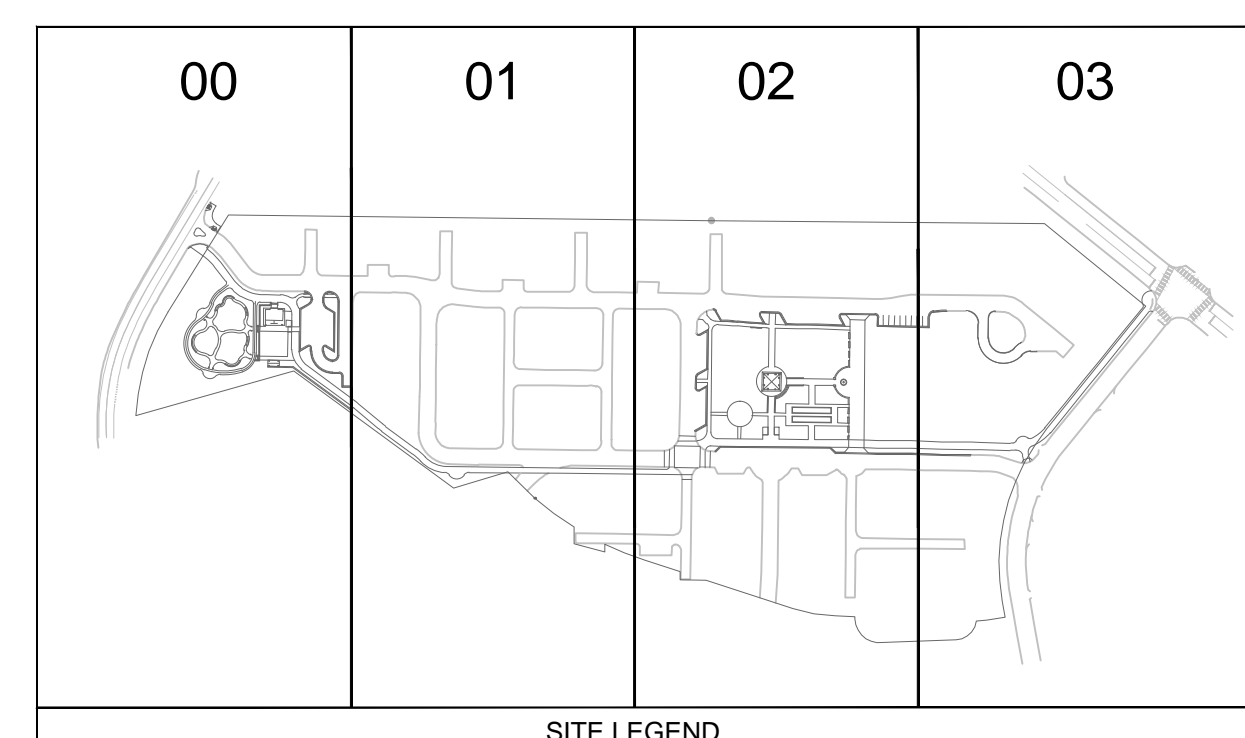
TREES	QTY	BOTANICAL NAME	COMMON NAME	CONT	CAL	SIZE
	3	Acer rubrum 'Autumn Flame'	Autumn Flame Red Maple	8.6.6	3" Cal	12'-14" Ht
	17	Acer rubrum 'Frank Jr'	Red Point Red Maple	8.6.6	3" Cal	16'-18" Ht
	3	Acer saccharum 'Legacy'	Legacy Sugar Maple	8.6.6	3" Cal	12'-14" Ht
	5	Amelanchier x grandiflora 'Autumn Brilliance'	'Autumn Brilliance' Serviceberry	8.6.6	3" Cal	6'-8" Ht
	18	Carynus castalisiana	American Hornbeam	8.6.6	3" Cal	12'-14" Ht
	7	Choranthus virginicus	White Fingerree	8.6.6	3" Cal	12'-20" Ht
	4	Cornus florida	Eastern Dogwood	8.6.6	3" Cal	6'-8" Ht
	6	Cryptomeria japonica	Japanese Cedar	8.6.6	3" Cal	6'-8" Ht
	3	Nyssa sylvatica 'Green Gable' TM	Black Gum	8.6.6	4" Cal	30'-50" Ht
	1	Quercus alba	White Oak	8.6.6	3" Cal	12'-14" Ht
	6	Quercus bicolor	Swamp White Oak	8.6.6	4" Cal	30'-50" Ht
	5	Quercus phellos	Willow Oak	8.6.6	3" Cal	12'-14" Ht
	23	Quercus phellos 'Hightower'	Hightower Willow Oak	8.6.6	3" Cal	45'-50" Ht
SHRUBS	QTY	BOTANICAL NAME	COMMON NAME	CONT	SIZE	
	15	Abelia x 'Mardi Gras'	Mardi Gras Abelia	2 gal	2'-4" Ht	
	82	Chamaecyparis pfitera 'Golden Moppy'	Golden Moppy Sawara False Cypress	3 gal	2'-4" Ht	
	33	Cleyera japonica	Sakaki	5 gal	8'-10" Ht	
	269	Gardenia jasminoides 'Radicans'	Miniature Gardenia	2 gal	6'-12" Ht	
	54	Hydrangea macrophylla 'All Summer Beauty'	All Summer Beauty Bigleaf Hydrangea	5 gal	2'-4" Ht	
	26	Loropetalum chinense 'Shang-Jio Purple Pixie'	Purple Pixie Loropetalum	3 gal	2'-4" Ht	
	33	Miscanthus sinensis 'Little Kitten'	Little Kitten Eulalia Grass	1 gal	3' Ht	
	251	Nandina domestica 'Firepower'	Firepower Heavenly Bamboo	1 gal	2'-4" Ht	
	54	Phnus laurocerasus 'Otto Luyken'	Luykens Laurel	3 gal	3'-4" Ht	
	240	Rhaphirolepis indica	Indian Hawthorn	2 gal	4'-6" Ht	
GROUND COVERS	QTY	BOTANICAL NAME	COMMON NAME	CONT	SIZE	
	38,770 sf	Cynodon dactylon 'Tifton 10'	Bermuda Grass	seed		
	1,572	Lilipoe muscaei 'Big Blue'	Big Blue Lilyturf	1 gal @ 12" oc	4" - 6"	
	2,944	Lilipoe muscaei 'Monroe White'	Monroe White Lilyturf	1 gal @ 12" oc	4" - 6"	
	1,430	Lilipoe muscaei 'Silver Dragon'	Lily Turf	1 gal @ 12" oc	4" - 6"	
	265	Lilipoe spicata	Creeping Lily Turf	1 gal @ 12" oc	1'-3" diameter	
	1,703	Rosa x 'Flower Carpet Coral'	Rose	1 gal @ 12" oc	30" Ht	

TREE PROTECTION AND LANDSCAPE NOTES

- PROVISIONS FOR TREE PROTECTION ON THE SITE SHALL BE, AS A MINIMUM, IN CONFORMANCE WITH THE REQUIREMENTS OF THE LATEST EDITION OF THE CITY OF DUNWOODY TREE PRESERVATION ORDINANCE, ZONING ORDINANCE AND ADMINISTRATIVE GUIDELINES PERTAINING TO TREE PROTECTION.
- IF THE LANDSCAPE DESIGN AND PLANT MATERIAL ARE CHANGED FROM THE PERMITTED PLAN, THREE (3) SETS OF REVISED PLANS SHALL BE SUBMITTED TO THE CITY OF DUNWOODY ARBORIST OFFICE FOR APPROVAL, PRIOR TO ANY LANDSCAPE INSTALLATION.
- ALL LANDSCAPING FOR EACH PHASE OF DEVELOPMENT SHALL BE COMPLETED PRIOR TO THE RECORDING OF THE FINAL PLAT FOR THAT PHASE, PRIOR TO THE ISSUANCE OF CERTIFICATE OF OCCUPANCY FOR THAT PHASE, OR PRIOR TO CONNECTION OF PERMANENT POWER FOR THAT PHASE. CONTACT THE CITY OF DUNWOODY AT 678.382.6800 FOR SITE INSPECTION UPON COMPLETION OF LANDSCAPE INSTALLATION.

ARBORIST NOTES:

- CONTACT THE CITY OF DUNWOODY PLANNER/ARBORIST AT 678.382.6810 TO DETERMINE IF A PRE-CONSTRUCTION MEETING PRIOR TO ANY LAND DISTURBANCE IS REQUIRED. ALL REQUIRED TREE FENCE MUST BE INSTALLED PRIOR TO THIS MEETING.
- UNDISTURBED BUFFERS SHALL BE PLANTED TO BUFFER STANDARDS WHERE SPARSELY VEGETATED OR WHERE DISTURBED DUE TO APPROVED UTILITY CROSSINGS. REPLANTING IS SUBJECT TO CITY PLANNER/ARBORIST APPROVAL (DO NOT PLANT TREES WITHIN THE SANITARY SEWER EASEMENT)
- CALL BEFORE YOU DIG (800) 282.7411



Kimley-Horn and Associates, Inc.
 817 WEST PEACHTREE ST., NW
 SUITE 601
 ATLANTA, GEORGIA 30308-1121
 Tel: (404) 419-8700
 Fax: (404) 419-8701
 © 2012, Kimley-Horn and Associates, Inc.

DUNWOODY RENAISSANCE PARKS
 DUNWOODY, GA 30346
TREE REPLACEMENT PLAN

DUNWOODY COMMUNITY DEVELOPMENT
 41 PERIMETER CENTER EAST
 DUNWOODY, GA 30346
 (678) 382-6800

BID SET - ADDENDUM 1

SCALE (H): 1"=20'
 SCALE (V): NONE
 DESIGNED BY: BS
 DRAWN BY: JHP
 CHECKED BY: JED
 DATE: 11/21/12
 KHA PROJECT NO.: 019124002
 SHEET NUMBER
L2-00