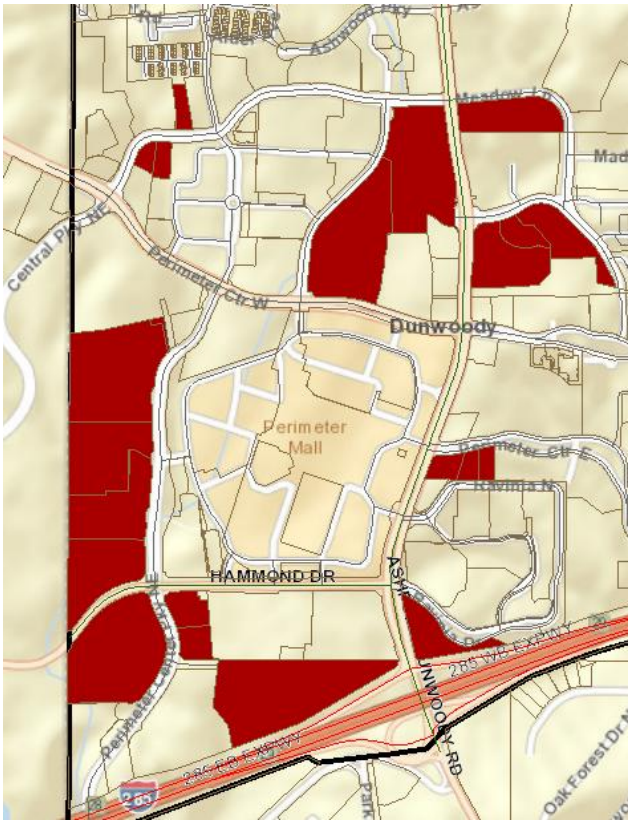
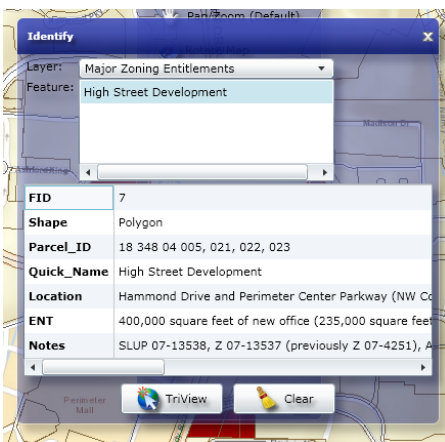


<http://gis.dunwoodyga.gov/apps/smartmap>



To see of the zoning allowances, click [here](#) which is the Dunwoody GIS system and then accept. Click Active Layer and drop down to Major Zoning Entitlements then click Tools and drop down to Map Layers to click Major Zoning Entitlements then exit out of Map Layers and click Identity. Now click on the red locations shown above around the mall where major development could happen.

A box opens and tells you what is preapproved. The beauty is that any changes needed come in front of council and we then negotiate what is best.



I haven't added clicked on every box but the residential units don't jump out at me as much as the hotel rooms and commercial space do.