

Spalding Drive at Chamblee-Dunwoody Road / Spender Trace / Spalding Club Ct

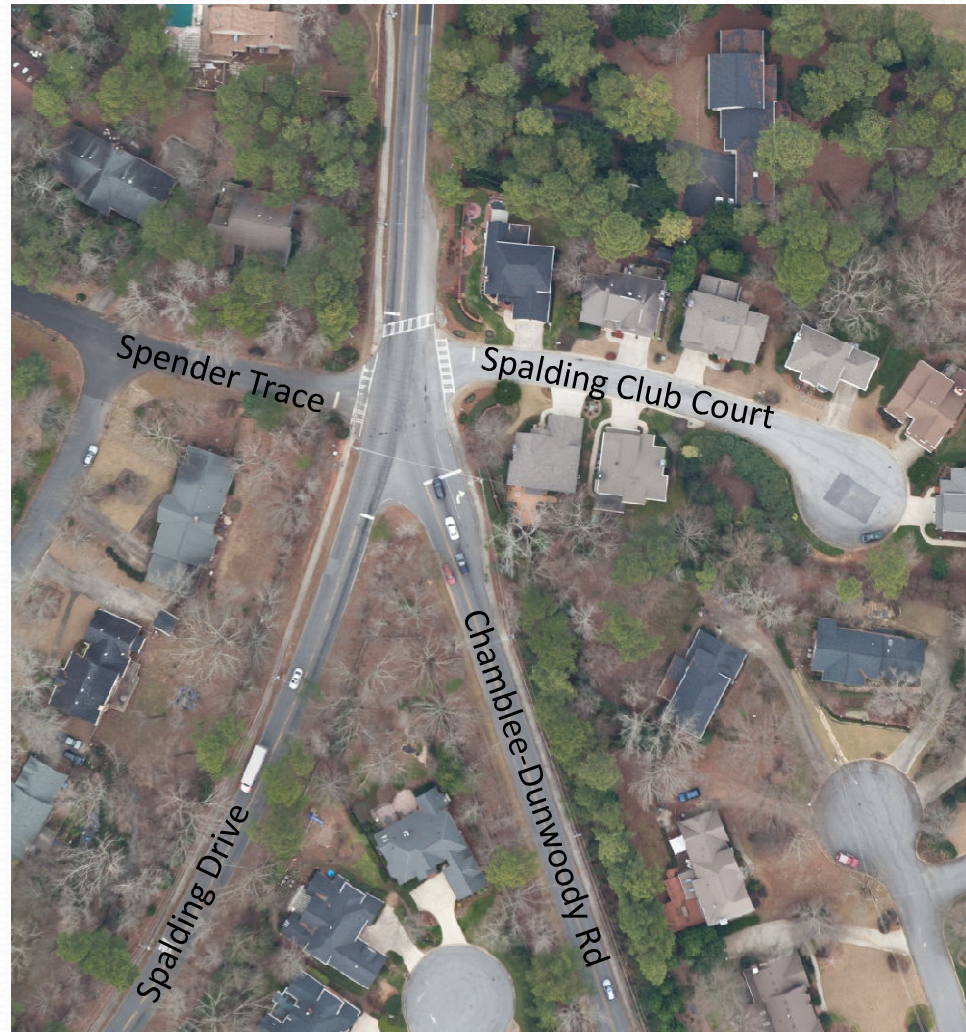
Mayor and City Council Meeting
April 21, 2014

Presentation Agenda

- Project Need and Purpose
- Community Outreach
- Discussion of Concepts
- Next Steps

Project Need and Purpose

- Tier 1 Safety Improvement Project
- Accident History
- Pedestrian facilities
- Sight Distance
- Speeding



Community Outreach

- Surrounding neighborhoods
- Consulted City of Sandy Springs
- Public Meeting
- Asked Questions
- Listened Carefully



Community Outreach: Primary Concerns

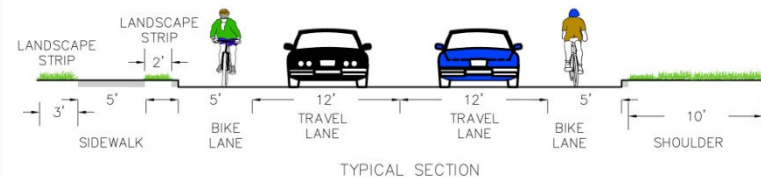
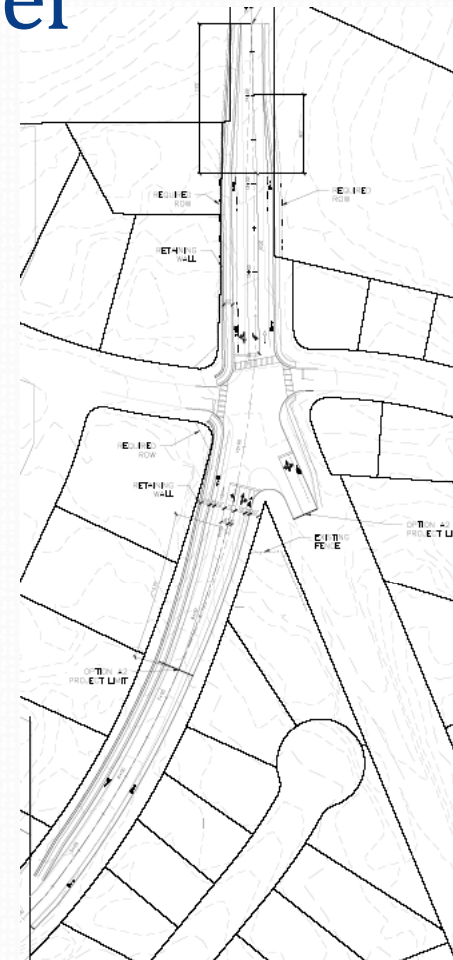
- Overwhelming Support for Improvements
- Safety Concerns
- Traffic Operations (Congestion)
- Pedestrian Access & Connectivity
- Preservation of Community Character
- Property Impacts



Option A Lower shoulder

- Add Left Turn Lanes on Spalding
- Includes walls to minimize ROW

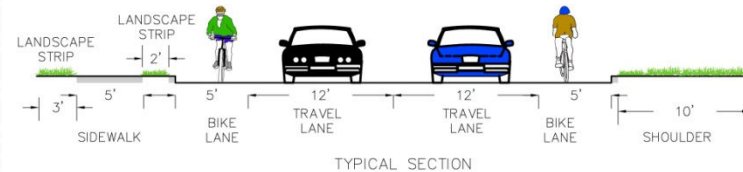
Criteria	
Open Year LOS (2016)	B/C
Design Year LOS (2036)	C/D
Total Cost	\$1,08M
Required R/W	0.08 acres
Reqd. Easements	0.03 acres
Additional Challenges	<ul style="list-style-type: none">• Reconstruct Woodland Forest Entrance



Option B Fix Hills on Spalding

- Corrects sight distance problems at both Spender and Auden

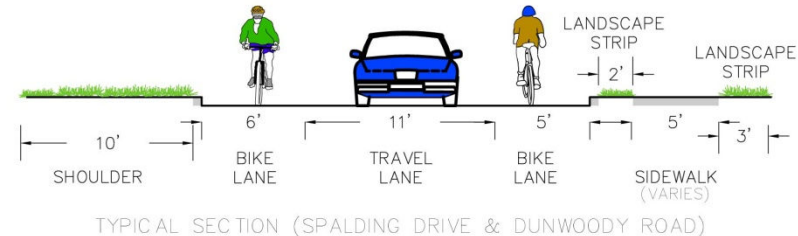
Criteria	
Open Year LOS (2016)	B/C
Design Year LOS (2036)	C/D
Total Cost	\$1.33M
Required R/W	0.13 acres
Reqd. Easements	0.19 acres
Additional Challenges	• Overlaps City Boundaries



Option C One Way Trio

Changes to traffic pattern allow signal to remain green for main street 95% of the time

Criteria	
Open Year LOS (2016)	A/A (Signal)
Design Year LOS (2036)	B/B (Signal)
Total Cost	\$900,000
Required R/W	0.18 acres
Reqd. Easement	0.04 acres
Additional Challenges	<ul style="list-style-type: none"> • Driver Expectancy • Restricts Movements • Further study will be needed



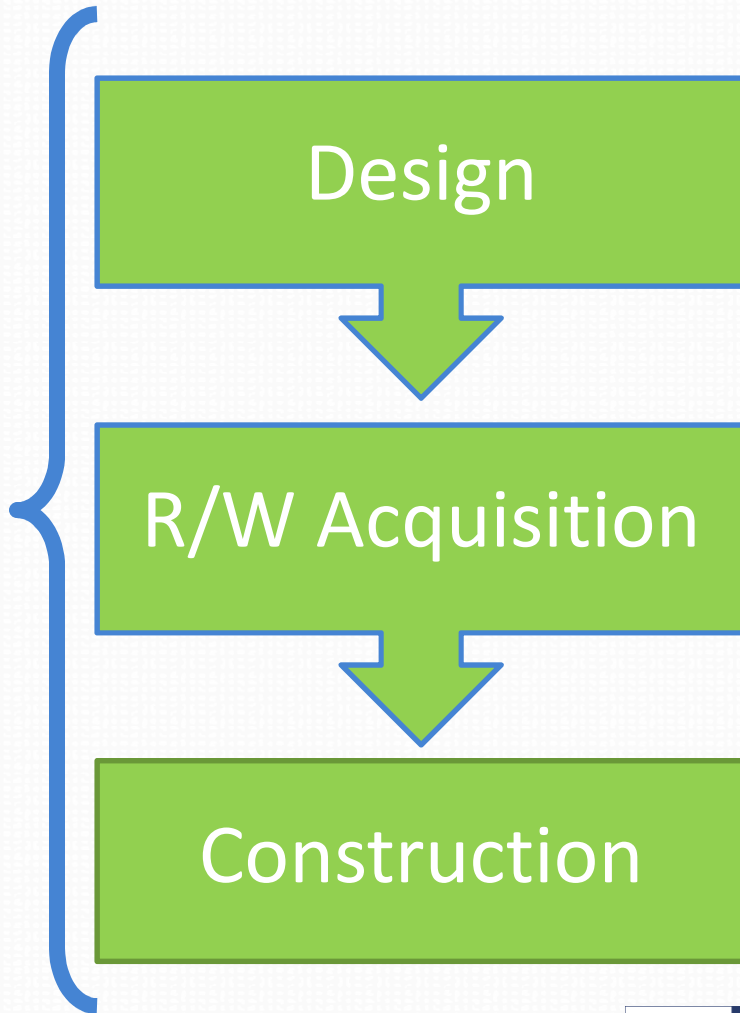
Concept Comparison

Criteria	Concept A	Concept B	Concept C
Safety	Very Good	Very Good	Excellent
Traffic Flow	Very Good	Very Good	Excellent
Cost	\$1.08M (Dunwoody Only)	\$1.33M (Dunwoody + Sandy Springs)	\$900K (Dunwoody + Sandy Springs)
Property Impacts	0.11 ac	0.32 ac	0.22 ac
Bike & Pedestrian Accommodation	Good	Good	Excellent
Design Life	Good	Good	Very Good
Intangibles	Excellent	Very Good	Good

Next Steps

Public Involvement

- Presentation to City Council(s)
- Both Cities to Provide Direction/Program



Additional Information

Michael Smith, Director of Public Works

Michael.Smith@dunwoodyga.gov

Mindy Sanders, Capital Projects Manager

Mindy.Sanders@dunwoodyga.gov

www.dunwoodyga.gov

http://dunwoodyga.gov/Departments/Public_Works/ChambleeDunwoodySpalding.aspx

