

**MEMORANDUM**

**To:** Mayor and City Council

**From:** Michael Smith, Public Works Director

**Date:** April 28, 2014

**Subject:** **Approval of Chamblee Dunwoody-Georgetown Corridor Design Contract**

---

**ITEM DESCRIPTION**

Approval of a contract for conceptual design of improvements for the Chamblee Dunwoody-Georgetown Corridor including sidewalks on Cotillion Drive and the intersection of Chamblee Dunwoody Road with North Shallowford Road and Peeler Road

**BACKGROUND**

The city has successfully secured two grants of funding through the Atlanta Regional Commission (ARC) to begin implementation of improvements in the Georgetown area as recommended in the city's Comprehensive Transportation Plan and the Georgetown/North Shallowford Area Master Plan. The initial funding of \$640,000 was awarded through the ARC's Last Mile Connectivity program for bicycle and pedestrian improvements on the Chamblee Dunwoody corridor. The city subsequently received an additional \$200,000 to plan improvements for all transportation modes on Chamblee Dunwoody Road and Cotillion Drive through the Transportation Alternatives Program (TAP).

In addition to this funding the city has budgeted \$150,000 to satisfy the match requirement for the \$640,000 grant and \$50,000 for the conceptual phase of the intersection improvement project at North Shallowford and Peeler. The city's match for the \$200,000 TAP grant has yet to be budgeted since the city was notified of the award after the 2014 budget had been prepared.

The contemplated scope for design of the improvements essentially consists of three distinct but related projects:

1. Chamblee Dunwoody Road streetscape, bicycle, pedestrian and traffic improvements between Cotillion Drive and Peeler Road as contemplated in the Georgetown/North Shallowford Master Plan
2. Cotillion Drive sidewalk construction between Chamblee Dunwoody Road and North Shallowford Road as outlined in the city's Sidewalk Improvement Program
3. Chamblee Dunwoody Road at North Shallowford Road and Peeler Road intersection improvements as recommended in the city's comprehensive transportation master plan

Due to the scope and anticipated costs of all of these improvements, staff anticipates that the construction will be divided into three or four phases or individual construction projects. Because there is some overlap and interrelationship between each of the projects, the projects can be developed in a more efficient and cohesive manner by advancing all three simultaneously at least through the conceptual design phase.

Projects receiving federal funds are required to follow the Georgia Department of Transportation's Plan Development Process (PDP). Following the PDP requires a higher level of environmental screening and overall coordination which increases the cost for design. The Chamblee Dunwoody Road and Cotillion Drive corridor improvements are receiving federal funding. At this time, the intersection project at North Shallowford and Peeler Road is locally funded. However, following the PDP for the intersection allows for the possibility of federal funding for future phases of the project.

In order to comply with the PDP and federal law, engineering services for the project must be selected based on qualifications. A fee is then negotiated with the firm determined to have the highest qualifications. The city advertised a Request for Qualifications (RFQ) in February and received six submittals. Public Works and Community Development staff evaluated the qualifications outlined in the written submittals and developed a short list of three firms for interviews (URS, Kimley-Horn and Baker). Based on the written qualifications and interview, URS was rated as the most qualified firm for this project.

## **FUNDING**

Adequate funding is available to contract for the concept phase as follows:

1. Chamblee Dunwoody corridor design from Cotillion Drive to Peeler Road- land surveying, environmental screening, public outreach, traffic analysis, conceptual design: \$209,149
2. Cotillion Drive from Chamblee Dunwoody Road to North Shallowford Road- land surveying, environmental screening, public outreach and conceptual design for sidewalk/multi-use path: \$100,000
3. Chamblee Dunwoody Road Intersection at North Shallowford Road and Peeler Road and Vermack Road-traffic analysis, public outreach and conceptual design: \$49,671

These fees have been established based on extensive negotiations and thorough review of the detailed man-hour estimates for the fee proposal. These fees are consistent with previously developed estimates for this project by independent parties and comparable to other federally funded projects of similar size and scope.

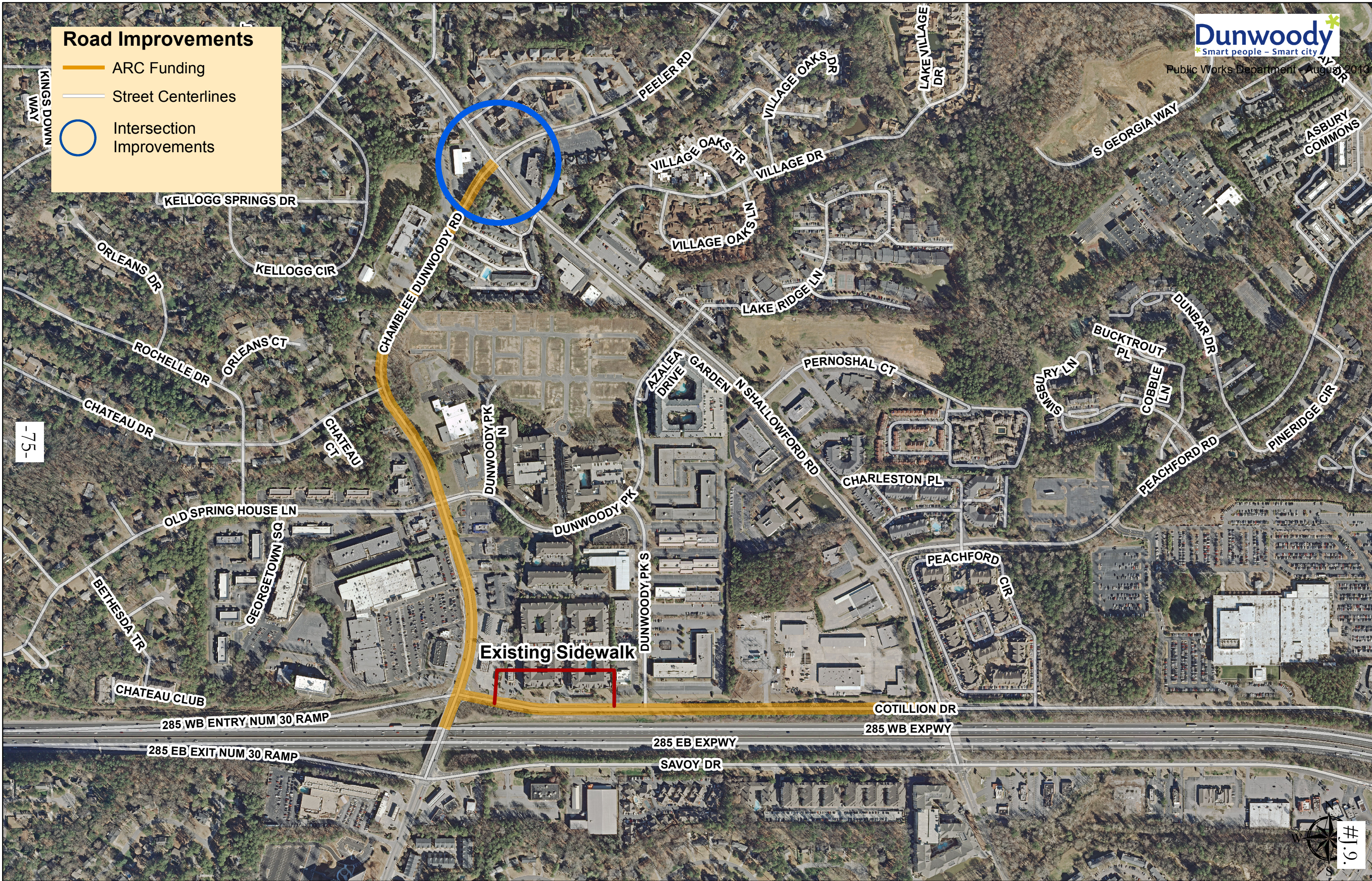
The intersection concept work is fully funded with \$50,000 previously allocated in the city's capital budget for this purpose. For the Chamblee Dunwoody and Cotillion corridors, the city has budgeted \$150,000 and has \$200,000 in federal funds allocated in the regional Transportation Improvement Plan (TIP) for the scoping/concept phase.

## **RECOMMENDED ACTION**

Staff respectfully requests that Council: (1) award Purchasing Contract 14-01 to URS Corporation; (2) authorize staff to provide funding for the contract as outlined above; and (3) authorize the City Manager to execute the necessary documents following satisfactory review by legal counsel.

### Road Improvements

- ARC Funding
- Street Centerlines
- Intersection Improvements



-75-

## 5-YEAR ACTION PLAN

The 5-Year Action Plan is a tool to outline and track improvement projects and efforts defined by the Master Plan. The chart on this and next page outlines each recommended transportation project and includes an estimate of cost, timing, and potential funding sources for each initiative. Action Plan categories (transportation, housing and other) are defined as required by the Atlanta Regional Commission.

Construction costs are preliminary estimates from early 2011 and should be used for budgetary purposes only. Construction costs can vary based on project design and the time at which projects are designed and/or constructed. More detailed cost estimates should be generated as implementation of individual projects is pursued.

Engineering costs vary from 10-20% of the projected construction cost based on the size and complexity of each project. Right of way (ROW) costs are estimated based on the potential value of the area affected based on the Framework Plan. The project years included in the table are based on a reasonable timeframe for implementing each initiative if progress were to begin immediately.

#	Project Name	Type of Improvement	Description
1	Chamblee Dunwoody Road Multi-Modal Improvements	"Roadway / Multimodal Roadway / Operations & Safety Transit / Facilities Capital Last Mile Connectivity / Joint Bike-Ped Facilities"	From I-285 to North Shallowford Road (3,500 ft); multi-use path to one side with narrower sidewalk on opposite side; landscaped buffer; access management plan; pedestrian crossing improvements; lighting; mast arms; sheltered bus stops; potential landscaped median along four-lane section at southern end
2	Chamblee Dunwoody Road Gateway Landscaping and Signage at Cotillion Road	"Roadway / Multimodal Roadway / Maintenance"	Most significant entry point; landscaping and signage; public involvement needed
3	Multi-modal improvements to roadways through "PVC Site"	"Roadway / Multimodal Roadway / Operations & Safety Last Mile Connectivity / Joint Bike-Ped Facilities"	Between Chamblee Dunwoody Road, Dunwoody Park, and North Shallowford Road (2,000 ft); utilize existing street widths; install final paving; landscaped buffer; multi-use trail to one side
4	Peachford Road Multi-Modal Improvements	"Roadway / Multimodal Roadway / Operations & Safety Last Mile Connectivity / Joint Bike-Ped Facilities"	From North Shallowford Road to North Peachtree Road (4,300 ft); restripe for bike lanes; landscaped buffer; sidewalks
5	Nancy Creek Greenway Trail	Last Mile Connectivity / Joint Bike-Ped Facilities	From North Shallowford Road to Georgia Way / Brook Run Avenue (3,600 ft); multi-use path; one bridge location; (should allow 24 hr non-gated availability if funded with LCI funds - other funding sources will allow usage restrictions)
6	North Shallowford Road Multi-Modal Improvements	"Roadway / Multimodal Roadway / Operations & Safety Transit / Facilities Capital Last Mile Connectivity / Joint Bike-Ped Facilities"	From Cotillion Drive to Independence Square - north of Peeler Road (4,500 ft); sidewalks on both sides; bike lanes; landscaped buffer; pedestrian crossing improvements; mast arms; lighting; sheltered bus stops
7	North Shallowford Road Gateway Landscaping and Signage at Cotillion Road	"Roadway / Multimodal Roadway / Maintenance"	Landscaping and signage; public involvement needed
8	Old Spring House Lane Multi-Modal Improvements	"Roadway / Multimodal Roadway / Operations & Safety Last Mile Connectivity / Joint Bike-Ped Facilities"	From Chamblee Dunwoody Road to Perimeter Center East (5,000 ft); Sidewalks (or multi-use path to one side), landscaped buffer, sharrows / increased bike signage



#	Project Name	Type of Improvement	Description
9	Peachford Road Extension (Could also be the focus of a supplemental study)	"Roadway / Multimodal Roadway / Operations & Safety Last Mile Connectivity / Joint Bike-Ped Facilities"	From North Shallowford Road to Chamblee Dunwoody Road (1,600 ft); sidewalks on both sides; two through-lanes; landscaped buffer; bike lanes; on-street parking
10	I-285 Transit Station	Transit / Facilities Capital	Multi-modal facility (integrated with surrounding bicycle, pedestrian, vehicular, and local bus facilities)
11	Cotillion Drive Multi-Modal Improvements	"Roadway / Multimodal Roadway / Operations & Safety Last Mile Connectivity / Joint Bike-Ped Facilities"	From North Shallowford Road to Chamblee Dunwoody Road (2,800 ft); multi-use path and landscaped buffer on the north side of Cotillion
12	Optimization / Coordination of Traffic Signals and ITS Improvements	Roadway / Operations & Safety	At intersections in and around the study area; ITS equipment; signal timing study and coordination plan
13	Dunwoody Park Multi-Modal Improvements	"Roadway / Multimodal Roadway / Operations & Safety Transit / Facilities Capital Last Mile Connectivity / Joint Bike-Ped Facilities"	From Chamblee Dunwoody Road to Peachford Road Extension / Dunwoody Park South (1,100 ft); Wide sidewalks on both sides; landscaped buffer; on-street parking; sheltered bus stops; on-street bike facilities
14	Dunwoody Park Multi-Modal Improvements	"Roadway / Multimodal Roadway / Operations & Safety Last Mile Connectivity / Joint Bike-Ped Facilities"	From Peachford Road Extension / Dunwoody Park South to North Shallowford Road (1,100 ft); wide sidewalks on both sides; landscaped buffer; lighting; on-street parking; on-street bike facilities
15	Dunwoody Park North Multi-Modal Improvements	"Roadway / Multimodal Roadway / Operations & Safety Last Mile Connectivity / Joint Bike-Ped Facilities"	From Dunwoody Park to the new roadways internal to the abandoned residential development (1,000 ft); wide sidewalks on both sides; landscaped buffer; lighting; on-street parking; on-street bike facilities

**Notes:**

Projects have been developed as part of a planning-level analysis. Some desired components - such as landscaped medians - may need to be included as longer-term phased components as determined during corridor-specific design processes.

Many related/integrated projects are displayed in groupings for the purposes of this study. These projects may need to be further broken into smaller groupings or segments as determined through the process of implementation.

- <sup>a</sup> Right-of-way estimates are based on ARC's costing tool as well as comparisons with other projects in similar areas. Some right-of-way costs may be reduced or eliminated if property is acquired by easement or through negotiations with property owners/developers.
- <sup>b</sup> Some elements requiring right-of-way - such as sidewalks and bike lanes - can be accomplished through easements in lieu of direct right-of-way acquisition.
- <sup>c</sup> Internal roadways may be done in partnership with a private developer.
- <sup>d</sup> Vehicular capacity increases must occur on roadways classified as minor collectors or higher to be eligible for LCI or GDOT funding. Roadways can be reclassified through GDOT to become eligible for funding.

## 5-Year Action Plan

Project Name	Engineering Year	Engineering Costs	ROW Year	ROW Costs <sup>a, b</sup>	Construction Year	Construction Costs	Total Project Costs	Responsible Party	Funding Source	Local Source	Match Amount
1. Chamblee Dunwoody Road Multi-Modal Improvements	2012	\$450,000	2013	\$750,000	2014	\$3,500,000	\$4,700,000	City of Dunwoody	City of Dunwoody, LCI, Federal Funds	City of Dunwoody	\$940,000
2. Chamblee Dunwoody Road Gateway Landscaping and Signage at Cotillion Drive	2012	\$30,000	2013	\$50,000	2014	\$250,000	\$330,000	City of Dunwoody	City of Dunwoody, Federal / State Funds, GDOT Gateway Grant	City of Dunwoody	\$66,000
3. Multi-modal improvements to roadways through "PVC Site"	2012	\$25,000	2013	\$750,000	2014	\$200,000	\$975,000	Private Development, City of Dunwoody	Private Development, City of Dunwoody, LCI, Federal Funds	Private Development, City of Dunwoody	\$195,000
4. Peachford Road Multi-Modal Improvements	2012	\$100,000	2013	\$500,000	2014	\$2,000,000	\$2,600,000	City of Dunwoody	City of Dunwoody, Grant Funds, LCI	City of Dunwoody	\$520,000
5. Nancy Creek Greenway Trail	2013	\$100,000	2014	\$1,500,000	2015	\$450,000	\$2,050,000	City of Dunwoody	City of Dunwoody, LCI, Federal / State Funds	City of Dunwoody	\$410,000
6. North Shallowford Road Multi-Modal Improvements	2014	\$500,000	2015	\$500,000	2016	\$3,000,000	\$4,000,000	City of Dunwoody	City of Dunwoody, LCI, TE	City of Dunwoody	\$800,000
7. North Shallowford Road Gateway Landscaping and Signage at Cotillion Road	2014	\$20,000	2015	\$30,000	2016	\$200,000	\$250,000	City of Dunwoody	City of Dunwoody, Federal Funds, GDOT Gateway Grant	City of Dunwoody	\$50,000
8. Old Spring House Lane Multi-Modal Improvements	2015	\$180,000	2016	\$500,000	2017	\$1,500,000	\$2,180,000	City of Dunwoody/ Perimeter CID	City of Dunwoody, LCI, Federal Funds, PCID	City of Dunwoody, PCID	\$436,000
9. Peachford Road Extension	2016	\$400,000	2017	3500000 <sup>c</sup>	2018	\$3,500,000	\$7,400,000	Private Development, City of Dunwoody	Private Development, City of Dunwoody <sup>d</sup>	Private Development, City of Dunwoody	\$1,480,000
10. I-285 Transit Station	TBD	\$400,000	TBD	\$2,000,000	TBD	\$4,000,000	\$6,400,000	Federal / State Agency	Federal Funds	NA	\$0
11. Cotillion Drive Multi-Modal Improvements	2014	\$150,000	2015	\$700,000	2016	\$1,200,000	\$2,050,000	City of Dunwoody, Federal / State Agency	City of Dunwoody, LCI, Federal Funds	City of Dunwoody	\$410,000
12. Optimization / Coordination of Traffic Signals and ITS Improvements	2015	\$50,000	NA	\$0	2016	\$500,000	\$550,000	City of Dunwoody	City of Dunwoody, LCI, Federal Funds	City of Dunwoody	\$110,000
13. Dunwoody Park Multi-Modal Improvements	2016	\$250,000	2017	\$1,000,000	2018	\$2,000,000	\$3,250,000	Private Development, City of Dunwoody	Private Development, City of Dunwoody, LCI, Federal Funds	City of Dunwoody	\$650,000
14. Dunwoody Park Multi-Modal Improvements	2016	\$150,000	2017	\$500,000	2018	\$1,200,000	\$1,850,000	Private Development, City of Dunwoody	Private Development, City of Dunwoody, LCI, Federal Funds	City of Dunwoody	\$370,000
15. Dunwoody Park North Multi-Modal Improvements	2016	\$150,000	2017	\$500,000	2018	\$1,200,000	\$1,850,000	Private Development, City of Dunwoody	Private Development, City of Dunwoody, LCI, Federal Funds	City of Dunwoody	\$370,000
Total		\$2,805,000		\$8,780,000		\$23,500,000	\$38,585,000				\$6,437,000

-79-

Table 10: City of Dunwoody Prioritized Project List

Priority Tier	Project ID	Type	Project Description	Implementation Strategy Approach	Total Project Cost	Completion Date
1a	1	ATMS/ITS Corridors	Automated Traffic Management Systems and Intelligent Transportation Systems implementation in the Perimeter CID as well as Dunwoody Village and Chamblee Dunwoody Road, North Shallowford Road, and North Peachtree Road corridors: Signal timing, controller upgrades, and signal interconnection	City of Dunwoody, Perimeter CID, ARC, LCI, T-SPLOST*, Georgia DOT	\$1,000,000	2011 - 2015
1a	2	Bicycle/ Pedestrian	Includes signed bike route and/or sharrows: North Peachtree Road, Tilly Mill Road, Peachford Road, Old Spring House Lane, Dunwoody Park, Perimeter Center East, Valley View Road, Meadow Lane Road, Vermack Road, Peeler Road, Happy Hollow Road, Womack Road, Olde Perimeter Way (private), Ridgeview Road.	City of Dunwoody, ARC, PCID	\$200,000	2011 - 2015
1a	3	Bicycle/ Pedestrian	Mount Vernon Road at North Peachtree Road: Add crosswalk and refuge island	GDOT Safe Routes To School Grant	\$100,000	2011 - 2015
1a	4	Intersection	Mount Vernon Road at Vermack Road: Add left turn lane from Mount Vernon Road to Vermack Road	City of Dunwoody	\$500,000	2011 - 2015
1a	5	Intersection	Womack Road at East Driveway of Georgia Perimeter College Dunwoody Campus: In conjunction with the college, reconfigure on-campus traffic flow to relieve congestion as well as provide alternative access and prohibit left turns from Womack Road into the college.	Georgia Perimeter College	\$150,000	2011 - 2015
1a	6	Intersection	Mount Vernon Road & Chamblee Dunwoody Road at Nandina Lane: Convert access to Nandina Lane to right in/right out. Nandina Lane remains two way. See also Dunwoody Village Master Plan, Five Year Implementation Plan, Project #3	City of Dunwoody, LCI	\$150,000	2011 - 2015

**City of Dunwoody**  
Comprehensive  
Transportation Plan

**Table 10: City of Dunwoody Prioritized Project List**

Priority Tier	Project ID	Type	Project Description	Implementation Strategy Approach	Total Project Cost	Completion Date
1a	7a	Intersection	Mount Vernon Road at Tilly Mill Road: Change existing left/through to left only and existing right only to shared through/right	City of Dunwoody, T-SPLOST*	\$200,000	2011 - 2015
1a	7b	Intersection	Mount Vernon Road at Mount Vernon Place: Prohibit left turn movements from Mount Vernon Place to Mount Vernon Road westbound. In conjunction with improvement at Mount Vernon Road and Tilly Mill Road.	City of Dunwoody	\$500	2011 - 2015
1a	7c	Intersection	Tilly Mill Road at Mount Vernon Place: Realign Mount Vernon Place to form a T intersection with Tilly Mill Road	City of Dunwoody	\$150,000	2011 - 2015
1a	8	Intersection	Womack Road at Vermack Road: Signalize or install a roundabout	City of Dunwoody	\$1,000,000	2011 - 2015
1a	9	Intersection	Intersection improvements on Chamblee Dunwoody Road from Vermack Road to North Shallowford Road	City of Dunwoody, T-SPLOST*	\$1,575,000	2011 - 2015
1a	10	Intersection	Tilly Mill Road at North Peachtree Road: Intersection improvement project. Complete concept report prior to improving the intersection.	City of Dunwoody	\$3,000,000	2011 - 2015
1a	11	Intersection	Chamblee Dunwoody Road at Spalding Drive: Reconfigure intersection to increase safety (see three concepts under consideration)	City of Dunwoody, ARC, T-SPLOST*	\$750,000	2011 - 2015
1a	12	Reconfigure Existing Roadway	Dunwoody Village Parkway multi-modal improvements - As shown in the Dunwoody Village Master Plan, Five Year Implementation Plan, Project #1	City of Dunwoody, LCI, Georgia DOT Transportation Enhancement	\$2,400,000	2011 - 2015
1a	13	Study	Dunwoody Village Traffic Study	City of Dunwoody, ARC	\$150,000	2011 - 2015