



SPLOST Project List

DeKalb County Fire Rescue



DEKALB COUNTY
SPLOST 2016



Mission:

DeKalb County Fire Rescue exists to provide our community with the highest level of life and property protection, risk reduction, emergency response, with a commitment to superior customer service, professionalism, and safety



DeKalb County Fire Rescue Quick Facts



- 627 members consisting of: 598 sworn personnel, 29 non-sworn personnel
- 26 Fire Stations
- Provide emergency services for 95% of DeKalb County (except for Atlanta & Decatur)
- Respond to:
 - Fires
 - Emergency Medical Calls
 - Hazardous Materials
 - Rescue
 - Aircraft Rescue and Fire Firefighting
 - Dive Rescue Team
 - Forestry Fire Response
- Provide Public Education, Life Safety Inspections, Fire Investigations
- Responded to 98,000 incidents and over 100,000 individual unit responses (2015)^{4/19/16}



DeKalb County Fire Rescue

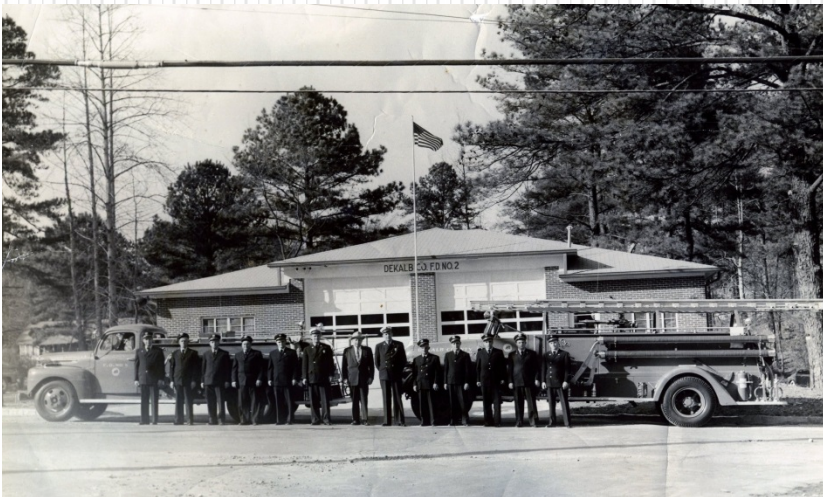
Fire Station #2



DEKALB COUNTY
SPLOST 2016

Station #2:

- Original station Built 1955;
- Renovated in 1990 a two bay residential style station to the current three bay facility;
- Engine 3-firefighters ;
- Truck 4-firefighters





DeKalb County Fire Rescue Fire Station #2



DEKALB COUNTY
SPLOST 2016

Station #2:

- Engine 2 Responses (Countywide): 2,756
- Truck 2 Responses (Countywide): 988
- Average Call to First Arrival in Station 2's immediate: 7:50





DeKalb County Fire Rescue



DEKALB COUNTY
SPLOST 2016

Incidents in Station 2's immediate:

Description	Count	Fire	EMS	Other
2	3234	67	1831	1336

Fire is anything that was burning, EMS is EMS, Other is service calls, gas leaks, flooding, Haz Mat (basically anything that's not burning or EMS).

Responses in Station 2's immediate:

Description	Count	Fire	EMS	Other
2	4282	442	2061	1779



DeKalb County Fire Rescue



DEKALB COUNTY
SPLOST 2016

Department Budget FY 2015

Fire Fund Budget- \$50,508,616

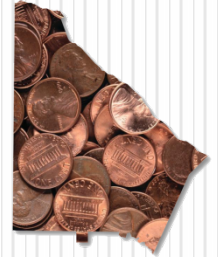
- Operating Budget-\$9,596,637

General Fund - \$9,031,360

- Operating Budget-\$1,354,704



DeKalb County Fire Rescue



DEKALB COUNTY
SPLOST 2016

Project list overview

- Replacement of Existing Fire Station Facilities
- Purchase of Rapid Response Vehicles
- Strategic Addition of Fire Station Facilities
- Construction of Central Fire Academy and Logistics Hub



DeKalb County Fire Rescue



DEKALB COUNTY
SPLOST 2016

Considerations for Equipment Deployment & Fire Station Location

- National Fire Protection Association (NFPA) Standards
- Insurance Services Office (ISO) Fire Service Rating Schedule
- Commission on Fire Accreditation International (CFAI) Standards
- 2015 Matrix Efficiency Study of DeKalb County Government
- 2009 DeKalb County Fire Rescue Capital Improvement Plan
- United States Census Bureau Data
- DeKalb County Fire Rescue Historical Call Data

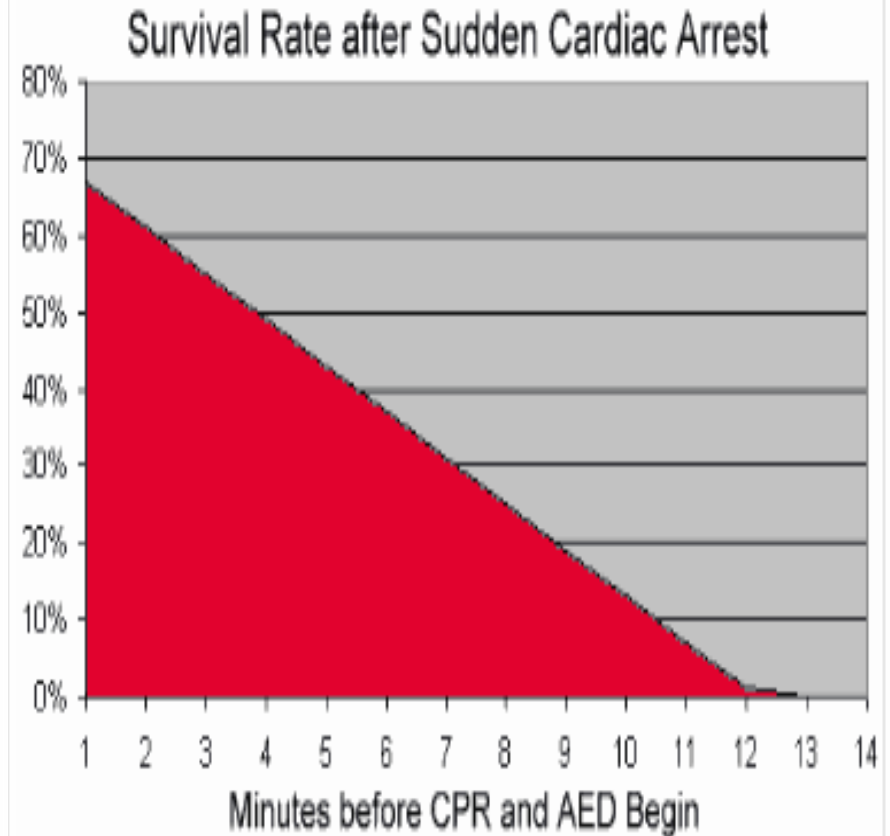
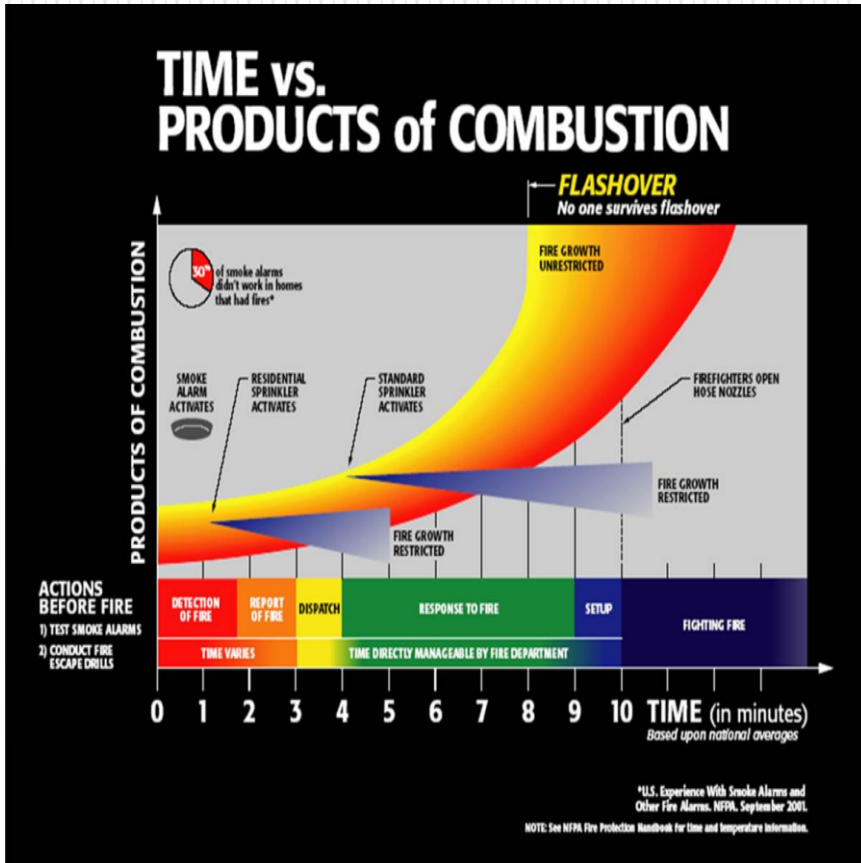


DeKalb County Fire Rescue

Outcomes from Prolonged Response Times

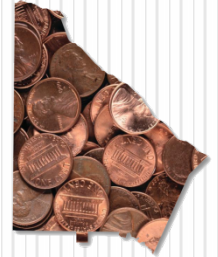


DEKALB COUNTY
SPLOST 2016





DeKalb County Fire Rescue



DEKALB COUNTY
SPLOST 2016

3,500 Responses is the National Standard for 100% Utilization

Unit	Number of Responses	% Over Best Practice*
Engine 3	3,648	4.20%
Engine 7	5,671	62.03%
Engine 11	4,124	17.83%
Engine 13	4,446	27.03%
Engine 14	4,938	41.09%
Quint 24	5,117	46.20%
Engine 26	3,829	9.40%



DeKalb County Fire Rescue

ISO Ratings for Like-Size Counties and Cities



DEKALB COUNTY
SPLOST 2016

Fire Department	Current Population	Population Density	Stations	ISO Rating
City of Atlanta	456002	3154	35	1
Austin, Tx	912791	2653	45	2
DeKalb County	722161	2586	26	3
Charlotte, NC	809958	2457	42	1
Cobb County*	747312	2051	29	3
Gwinnett County	877922	1871	30	4
Clayton County*	265888	1834	14	3

*Cities provide additional fire protection within this county



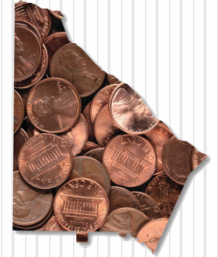
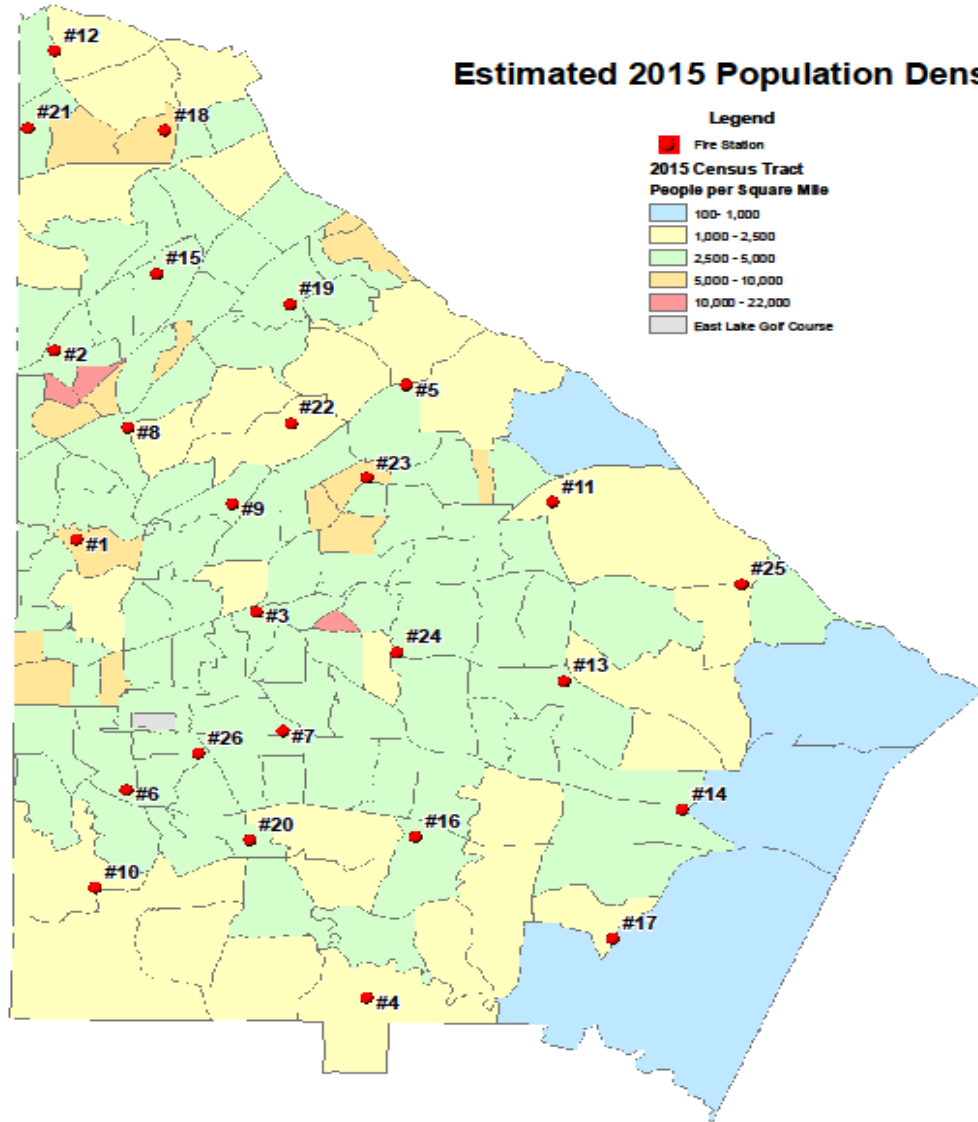
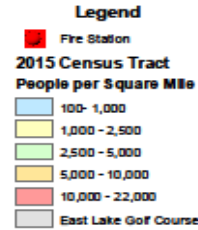
DeKalb County, GA

Date Printed: 2/28/2016
 Data Source: Atlanta Regional Commission
 US2010 Project <http://www.atlarc.com/atlarc2010/Researcher/BringingHome>



DeKalb County GIS Disclaimer:
 The maps and data contained on DeKalb County's Geographic Information System (GIS) are subject to constant change. While DeKalb County strives to provide accurate and up-to-date information, the information is provided "as is" without warranty, representation or guarantee of any kind as to the content, accuracy, reliability, or completeness of any of the data or information provided herein. DeKalb County explicitly disclaims all representations and warranties, including without limitation, the implied warranties of merchantability and fitness for a particular purpose. It is no warranty that DeKalb County be liable for any special, indirect, or consequential damages whatsoever resulting from the use, data, or profits, whether in an action of contract, negligence, or other tortious, arising out of or in connection with the use of the maps and/or data herein provided. The maps and data are for illustrative purposes only and should not be relied upon for any specific decision-making nor should it be construed or used as a legal description. The areas depicted by maps and data are approximate, and are not necessarily accurate to surveying/engineering standards.

Estimated 2015 Population Density



DEKALB COUNTY
 SPLOST 2016



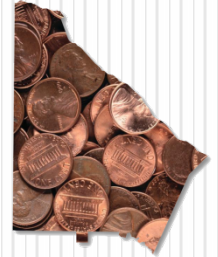
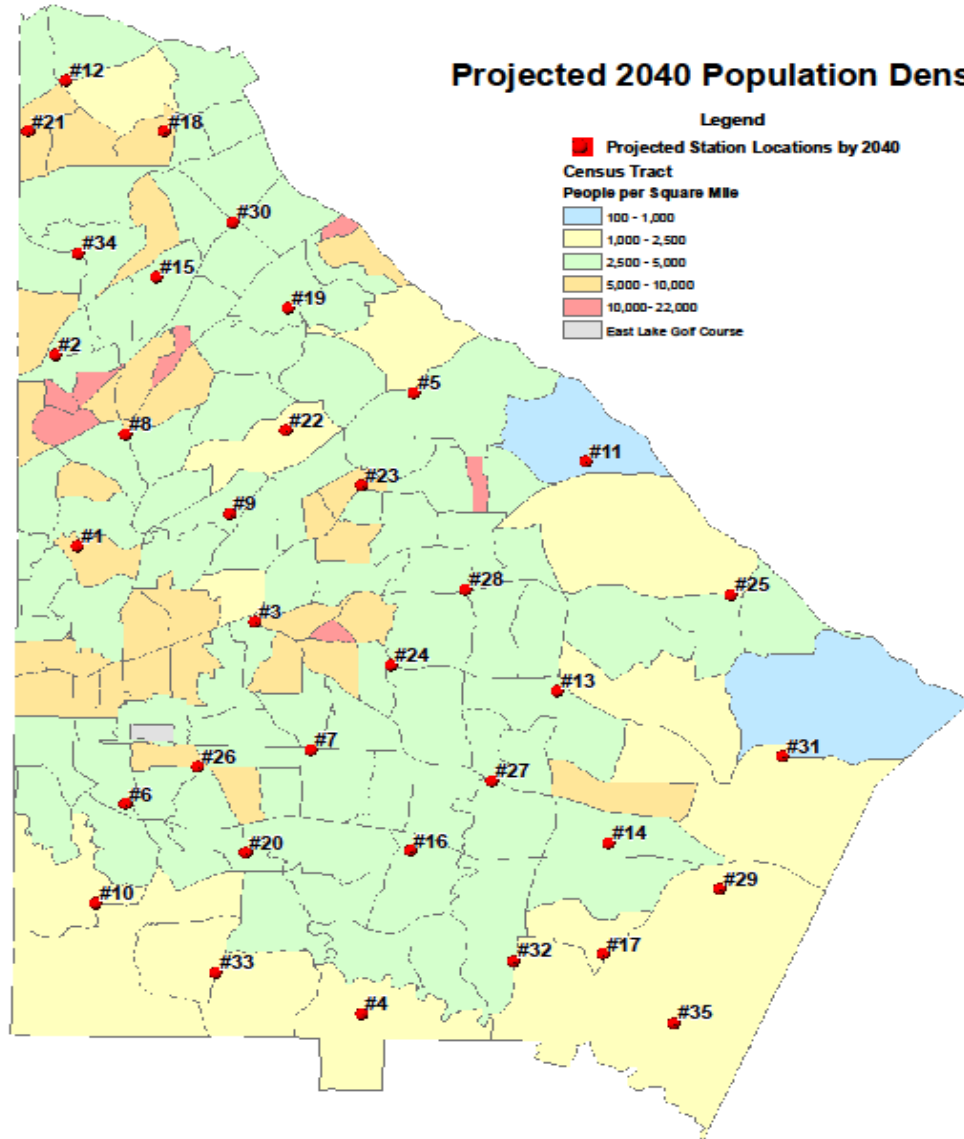
DeKalb County, GA

Date Printed: 3/1/2016
 Data Source: Atlanta Regional Commission
 US2010 Project <http://www.arscom.edu/us2010/Research/Building.htm>



DeKalb County GIS Disclaimer
 The maps and data contained on DeKalb County's Geographic Information System (GIS) are subject to constant change. While DeKalb County strives to provide accurate and up-to-date information, the information is provided "as is" without warranty, representation or guarantee of any kind as to the content, accuracy, reliability or completeness of any of the database information provided herein. DeKalb County explicitly disclaims all representations and warranties, including without limitation, the implied warranty of merchantability and fitness for a particular purpose. In no event shall DeKalb County be liable for any special, indirect, or consequential damages whatsoever resulting from use, data, or profits, whether in an action of contract, negligence, or other action, arising out of or in connection with the use of the maps and/or data herein provided. The maps and data are for illustrative purposes only and should not be relied upon for any reason. The maps and data are not suitable for site-specific decision-making nor should be contracted or used as a legal description. The areas depicted by maps and data are approximate, and are not necessarily accurate to surveying or engineering standards.

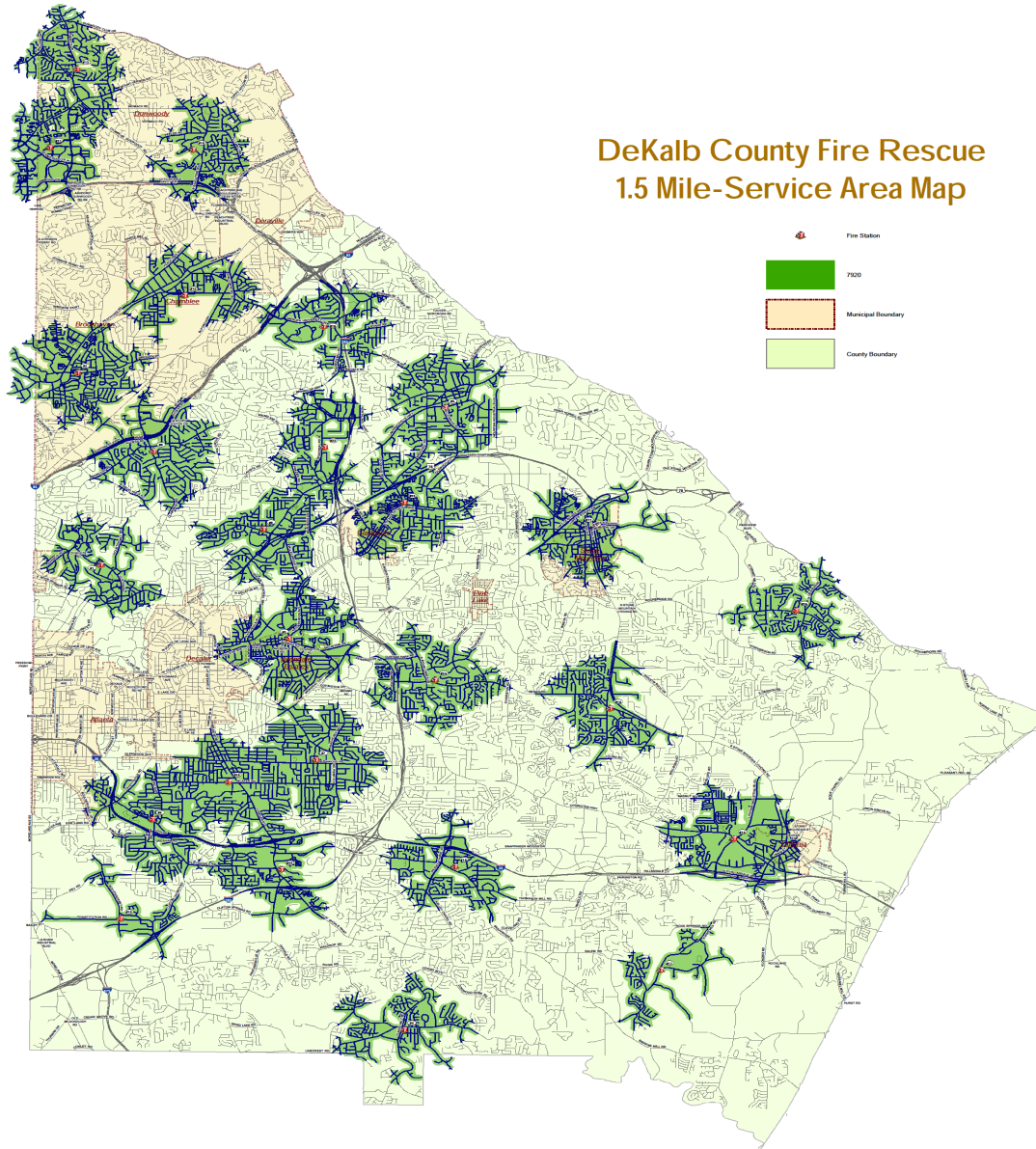
Projected 2040 Population Density







DEKALB COUNTY
 SPLOST 2016



DeKalb County Fire Rescue 1.5 Mile-Service Area Map




-  Fire Station
-  7520
-  Municipal Boundary
-  County Boundary




DEKALB COUNTY
SPLOST 2016





DeKalb County, GA
Geographic Information Systems Department

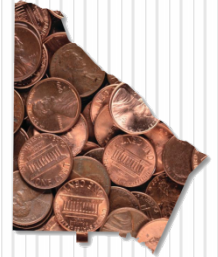
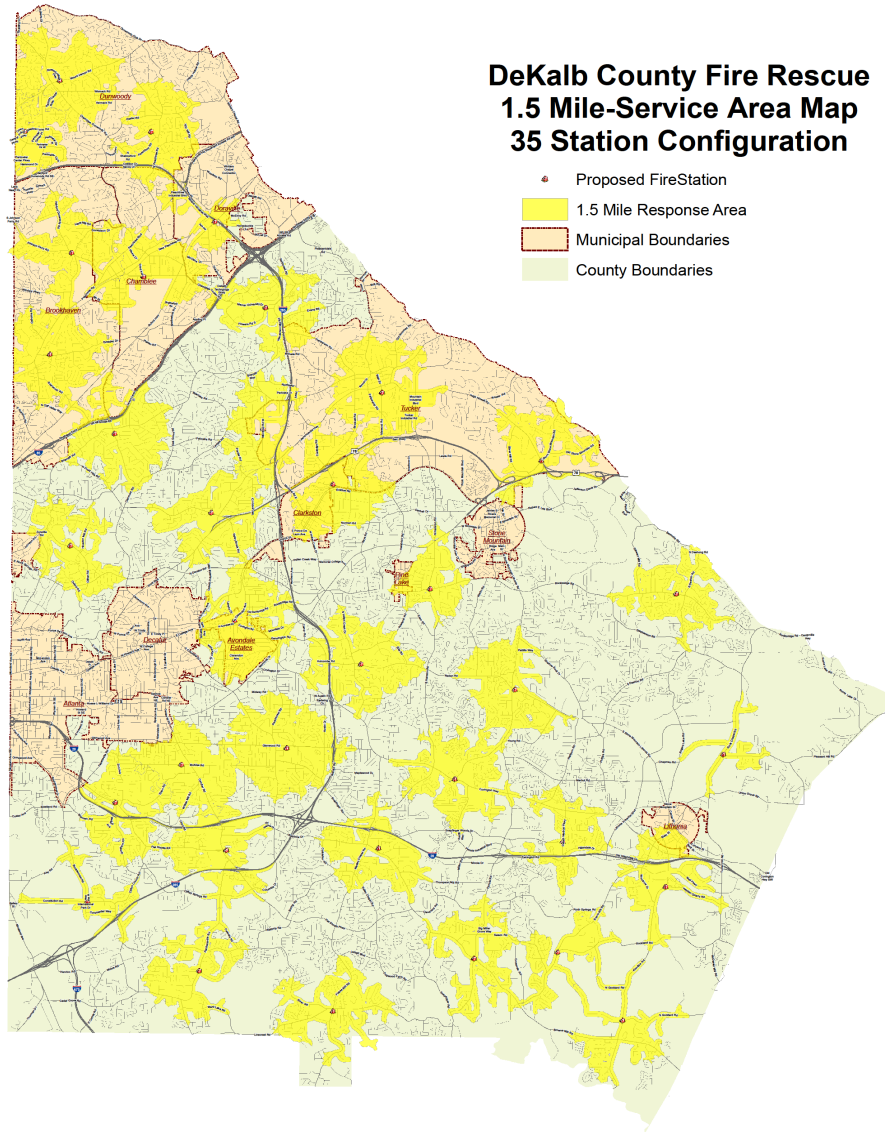


Map produced by the GIS Department
DeKalb County GIS Department
 This map and any information contained herein are the property of DeKalb County, Georgia. All rights reserved. No part of this map or any information contained herein may be reproduced, stored in a retrieval system, or transmitted in any form or by any means, electronic, mechanical, photocopying, recording, or by any information storage and retrieval system, without the prior written permission of the GIS Department. The GIS Department is not responsible for any errors or omissions on this map. The GIS Department is not responsible for any damages or liabilities arising from the use of this map. The GIS Department is not responsible for any damages or liabilities arising from the use of this map. The GIS Department is not responsible for any damages or liabilities arising from the use of this map.



DeKalb County Fire Rescue 1.5 Mile-Service Area Map 35 Station Configuration

- Proposed Fire Station
- 1.5 Mile Response Area
- Municipal Boundaries
- County Boundaries



DEKALB COUNTY
SPLOST 2016



DeKalb County, GA
Geographic Information Systems Department



Map produced by the GIS Department
DeKalb County GIS Department
This map is a representation of the current data available to the GIS Department. It is not intended to be used for legal purposes. The GIS Department is not responsible for any errors or omissions in this map. The map is provided as a service to the public and is subject to change without notice. The map is not a warranty, representation, or agreement of any kind. The map is provided as a service to the public and is subject to change without notice. The map is not a warranty, representation, or agreement of any kind.



DeKalb County Fire Rescue



DEKALB COUNTY
SPLOST 2016

Project list

Project: Replacement of Existing Station Facilities

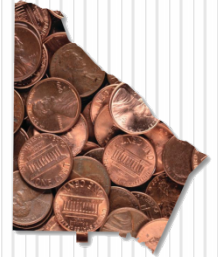
Project description: Replace inadequate facilities at Fire Stations. Rebuilding projects will provide long term deployment flexibility and opportunities for relocation to more appropriate sites.

Implementation timeline: 12-18 months (Dependent on land acquisition timeline)

Estimated cost: \$25,600,000



DeKalb County Fire Rescue



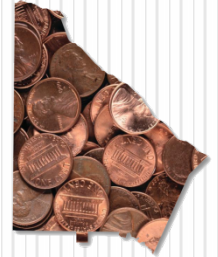
DEKALB COUNTY
SPLOST 2016

Replacement Fire Stations

- Station #5 Lawrenceville Hwy & Fellowship Rd-City of Tucker
- Station #7 Derrill Drive & Glenwood Road
- Station #11 Memorial Drive & 4th Street-City of Stone Mountain
- Station #12 Roberts Drive-City of Dunwoody
- Station #13 Redan Road & Panola Road
- Station #14 Covington Hwy & Lithonia Ind. Way
- Station #16 Pleasantwood Road & Snapfinger Road



DeKalb County Fire Rescue



DEKALB COUNTY
SPLOST 2016

Fire Station #5
City of Tucker

Does not accommodate modern fire trucks
Lacks gender appropriate facilities



Built in 1955
Relocation

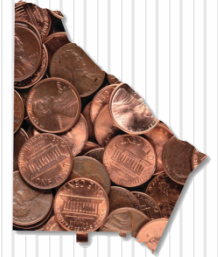
Contains structural and environmental
deficiencies after 61 years of service.



4/19/16



DeKalb County Fire Rescue



DEKALB COUNTY
SPLOST 2016

Fire Station #7

Unincorporated DeKalb

Does not accommodate modern fire trucks
Lacks gender appropriate facilities

Built in 1945

Relocation

Contains structural and environmental deficiencies after 71 years of service.





DeKalb County Fire Rescue



DEKALB COUNTY
SPLOST 2016

Fire Station #11
City of Stone Mountain

Does not accommodate modern fire trucks
Lacks gender appropriate facilities



Built in 1961
Relocation

Contains structural and environmental
deficiencies after 55 years of service.





DeKalb County Fire Rescue



DEKALB COUNTY
SPLOST 2016

Fire Station #12
City of Dunwoody

Does not accommodate modern fire trucks
Lacks gender appropriate facilities



Built in 1964
Relocation

Relocation will provide better coverage and
response for residents in Dunwoody.





DeKalb County Fire Rescue



DEKALB COUNTY
SPLOST 2016

Fire Station #13

Unincorporated DeKalb

Does not accommodate modern fire trucks
Lacks gender appropriate facilities

Built in 1965

Rebuild

Current location is optimal for coverage and response. Plan to rebuild on site.





DeKalb County Fire Rescue



DEKALB COUNTY
SPLOST 2016

Fire Station #14

Unincorporated DeKalb

Does not accommodate modern fire trucks
Lacks gender appropriate facilities

Built in 1965

Relocation

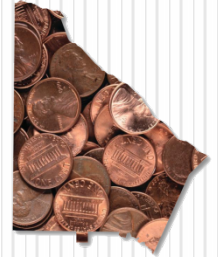
Relocation will be done in conjunction with
the addition of stations in eastern DeKalb.



4/19/16



DeKalb County Fire Rescue



DEKALB COUNTY
SPLOST 2016

Fire Station #16

Unincorporated DeKalb

Does not accommodate modern fire trucks
Lacks gender appropriate facilities

Built in 1968

Relocation

Current location is optimal for coverage and response. Plan to rebuild on site.





DeKalb County Fire Rescue



DEKALB COUNTY
SPLOST 2016

Project list

Project: Purchase and Implementation of Quick Response Medical Units

Project description: The addition of these resources will provide a lower cost and more flexible response unit to offset increased service demand and increase access to fire rescue resources. These units could extend the lifespan of our current high value apparatus by up to 3.7 years .

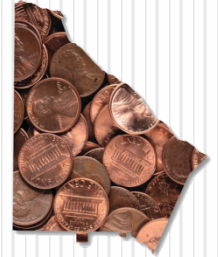
Implementation timeline: 12 months

Estimated cost: \$1,250,000



DeKalb County Fire Rescue

Rapid Response Vehicles (RRV's) Raise Efficiency - Lower Response Times



DEKALB COUNTY
SPLOST 2016

- Outfitted with Pump and 300 Gallon Tank
- Useful for Parking Deck and Brush Fires
- Four Wheel Drive Capability
- Respond to Low Acuity Medical Calls



Clayton County Fire and Emergency Services



Cobb County Fire and Emergency Services



DeKalb County Fire Rescue



DEKALB COUNTY
SPLOST 2016

Project list

Project: Construction of Additional Fire Station Facilities

Project description: Build and equip Fire Stations. Additional stations will improve:

- Access and coverage throughout all portions of DeKalb County
- Reduce response times and the overutilization of existing units

Implementation timeline: 12-18 months (Dependent on land acquisition timeline)

Estimated cost: \$38,740,000



DeKalb County Fire Rescue



DEKALB COUNTY
SPLOST 2016

Additional Fire Stations

- Station #27 Covington Hwy & Young Road-Unincorporated DeKalb
- Station #28 S. Hairston & Rockbridge Rd-Unincorporated DeKalb
- Station #29 Kondike Rd & Woodrow Rd-Unincorporated DeKalb
- Station #30 Buford Hwy & Motor Ind. Way- Doraville
- Station #31 Pleasant Hill Rd & Rock Chapel Rd-Unincorporated DeKalb
- Station #32 Panola Rd & Browns Mill Rd-Unincorporated DeKalb
- Station #33 Panthersville Rd & Tolliver Rd-Unincorporated DeKalb
- Station #34 Ashford Dunwoody Rd & Johnson Ferry Rd- Brookhaven
- Station #35 S. Goddard Rd & Klondike Rd-Unincorporated DeKalb

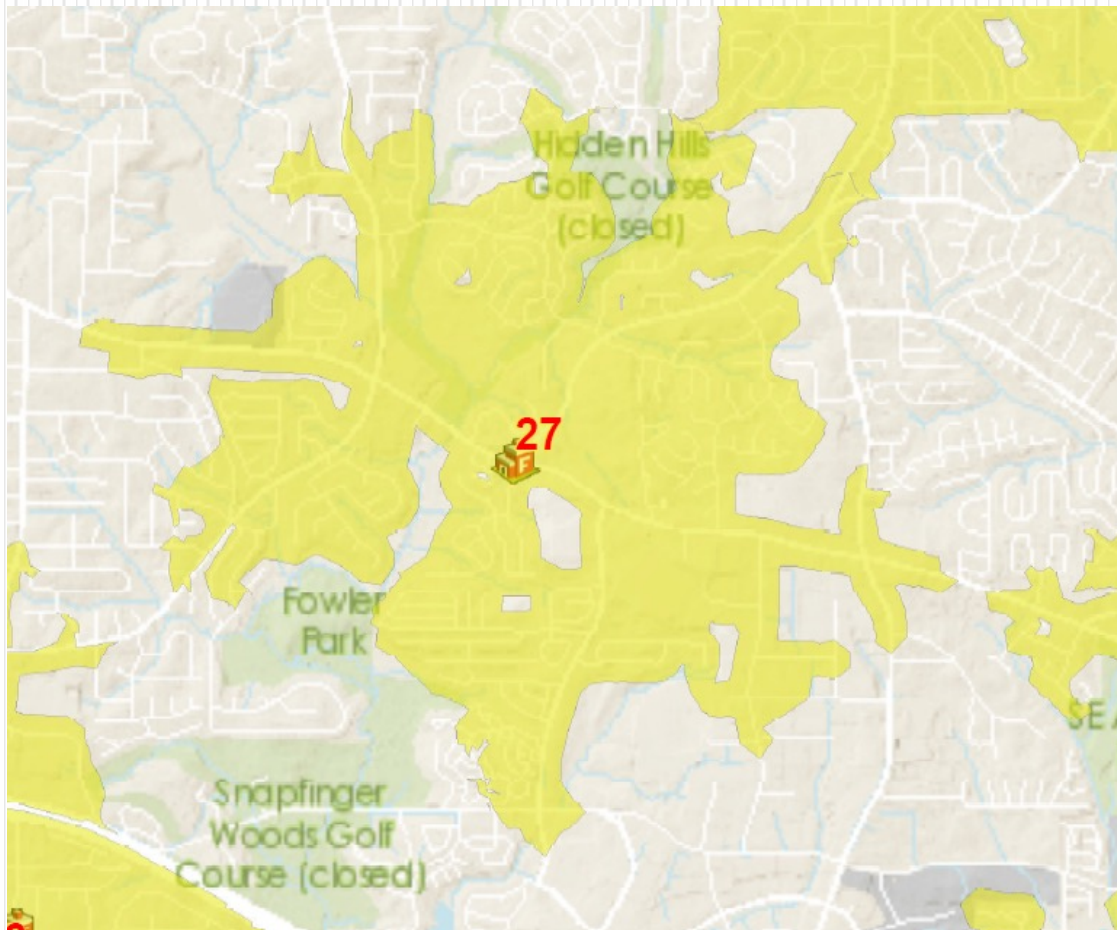


DeKalb County Fire Rescue

Fire Station #27
Unincorporated DeKalb
Covington Hwy & Young Road



DEKALB COUNTY
SPLOST 2016



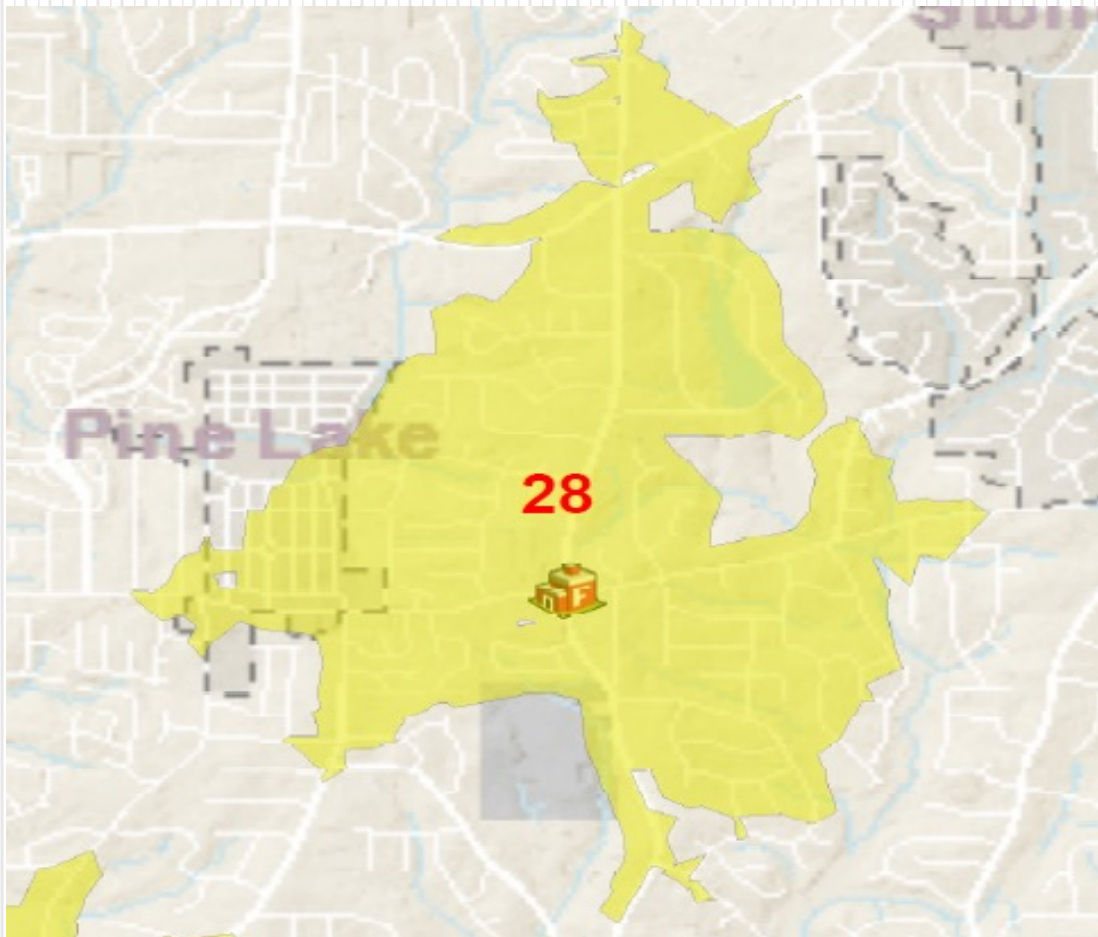
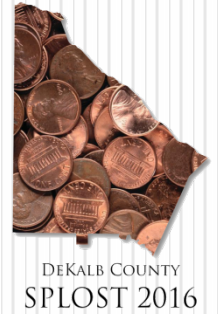
New Construction

- Would improve coverage and reduce response times in the Covington Highway corridor
- One fire engine will be assigned and staffed at this station
- Current travel time performance in this area is 10:49 minutes



DeKalb County Fire Rescue

Fire Station #28
Unincorporated DeKalb (Pine Lake)
S. Hairston & Rockbridge Rd



New Construction

- Would improve coverage and reduce response times in the Pine Lake area
- One fire engine will be assigned and staffed at this station
- Current travel time performance in this area is 10:29 minutes



DeKalb County Fire Rescue

Fire Station #29

Unincorporated DeKalb (Stonecrest Area)

Kondike Rd & Woodrow Rd



DEKALB COUNTY
SPLOST 2016



New Construction

- Would improve coverage and reduce response times in the growing Stonecrest corridor
- One fire engine and one ladder truck will be assigned and staffed at this station
- Current travel time performance in this area is 13:31minutes



DeKalb County Fire Rescue

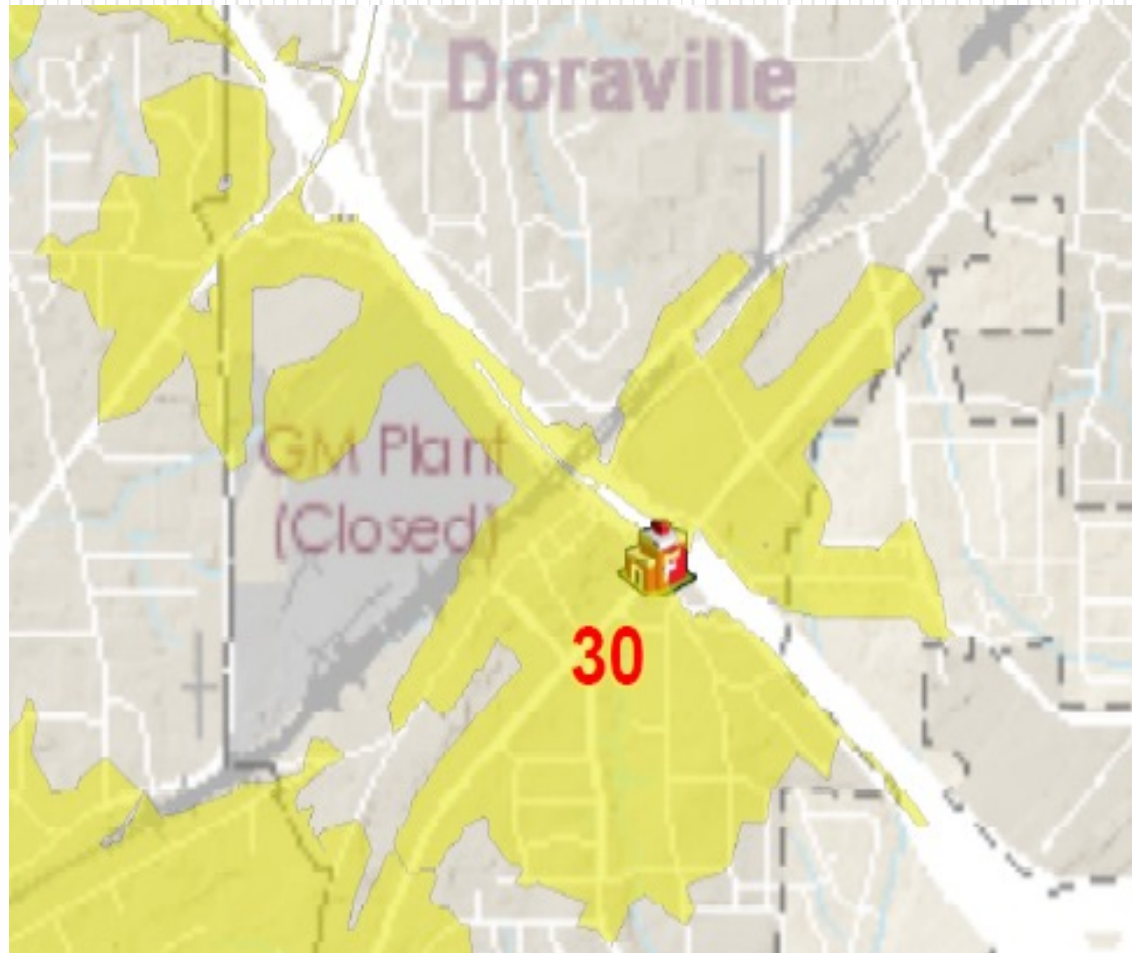
Fire Station #30

City of Doraville

Buford Hwy & Motor Ind. Way



DEKALB COUNTY
SPLOST 2016



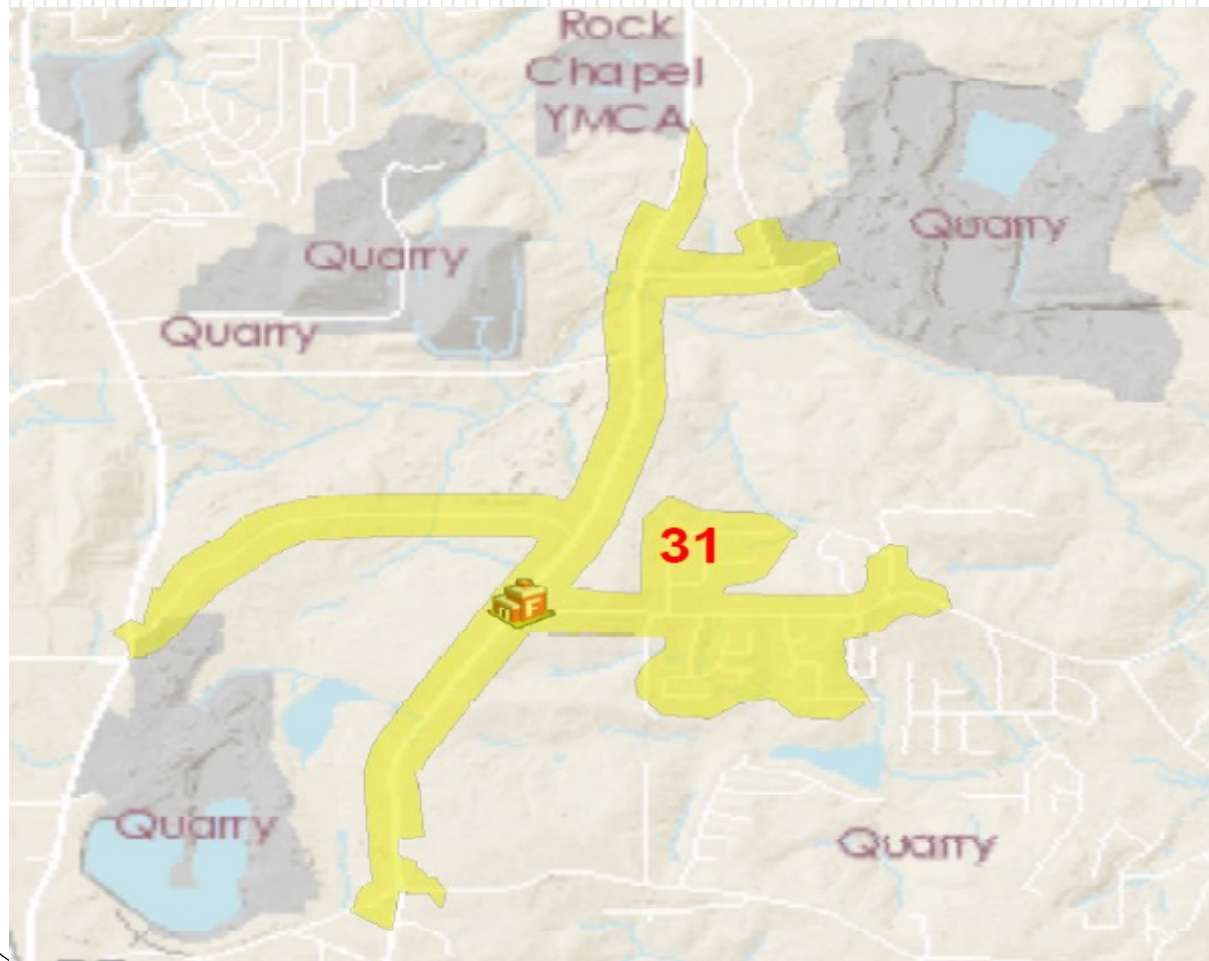
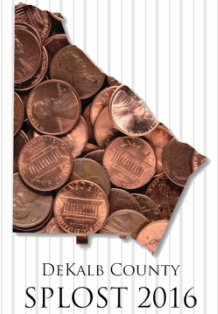
New Construction

- Would improve coverage and reduce response times in Doraville, Dunwoody, and Chamblee
- One fire engine and one ladder truck will be assigned and staffed at this station
- Current travel time performance in this area is 12:25 minutes



DeKalb County Fire Rescue

Fire Station #31
Unincorporated DeKalb
Pleasant Hill Rd & Rock Chapel Rd



New Construction

- Would eliminate 5+ mile ISO coverage gap on eastern edge of DeKalb to protect property owners from insurance rates increases
- One fire engine will be assigned and staffed at this station
- Current travel time performance in this area is 12:53 minutes

4/19/16

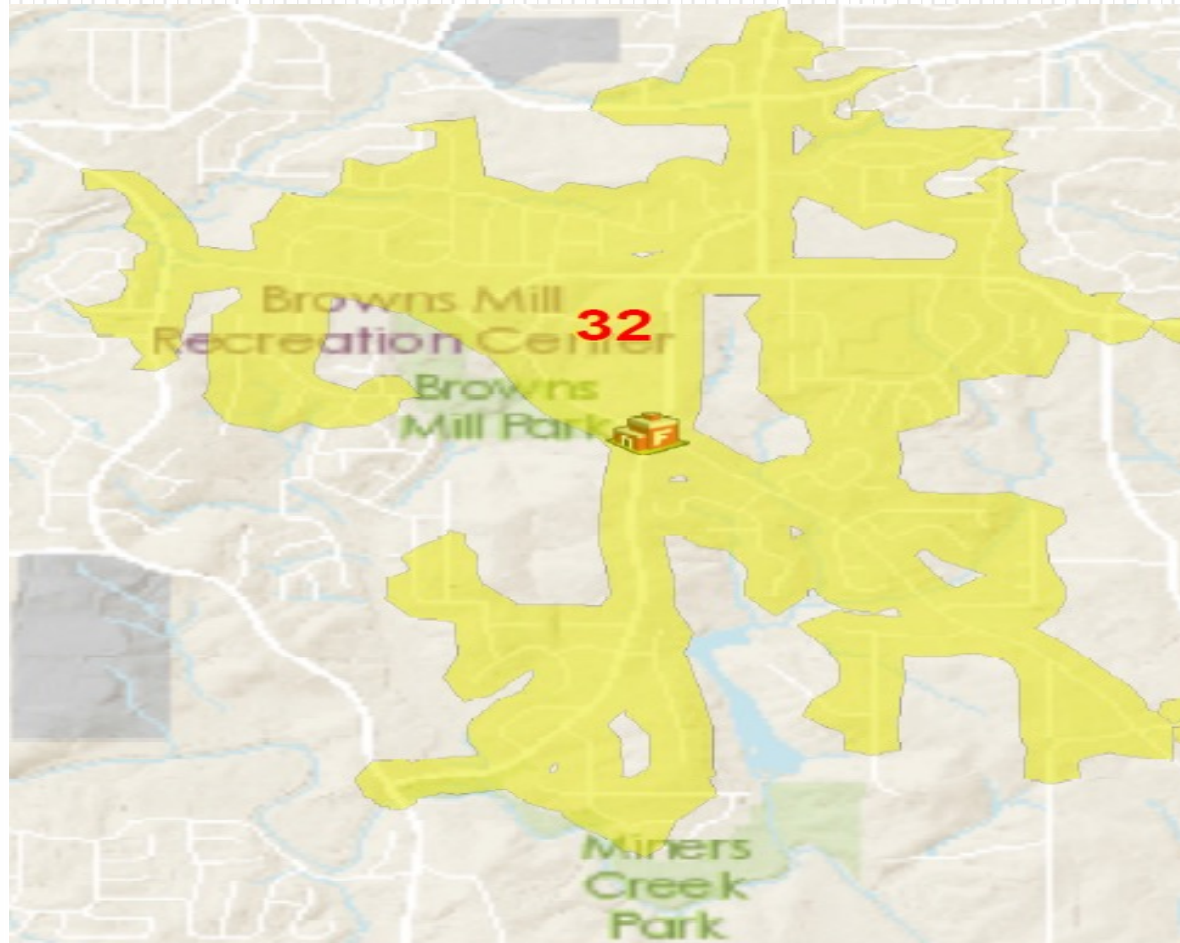


DeKalb County Fire Rescue

Fire Station #32
Unincorporated DeKalb
Panola Rd & Browns Mill Rd



DEKALB COUNTY
SPLOST 2016



New Construction

- Would improve coverage and reduce response times in the fastest growing portion of DeKalb
- One fire engine and one ladder truck will be assigned and staffed at this station
- Current travel time performance in this area is 12:06 minutes

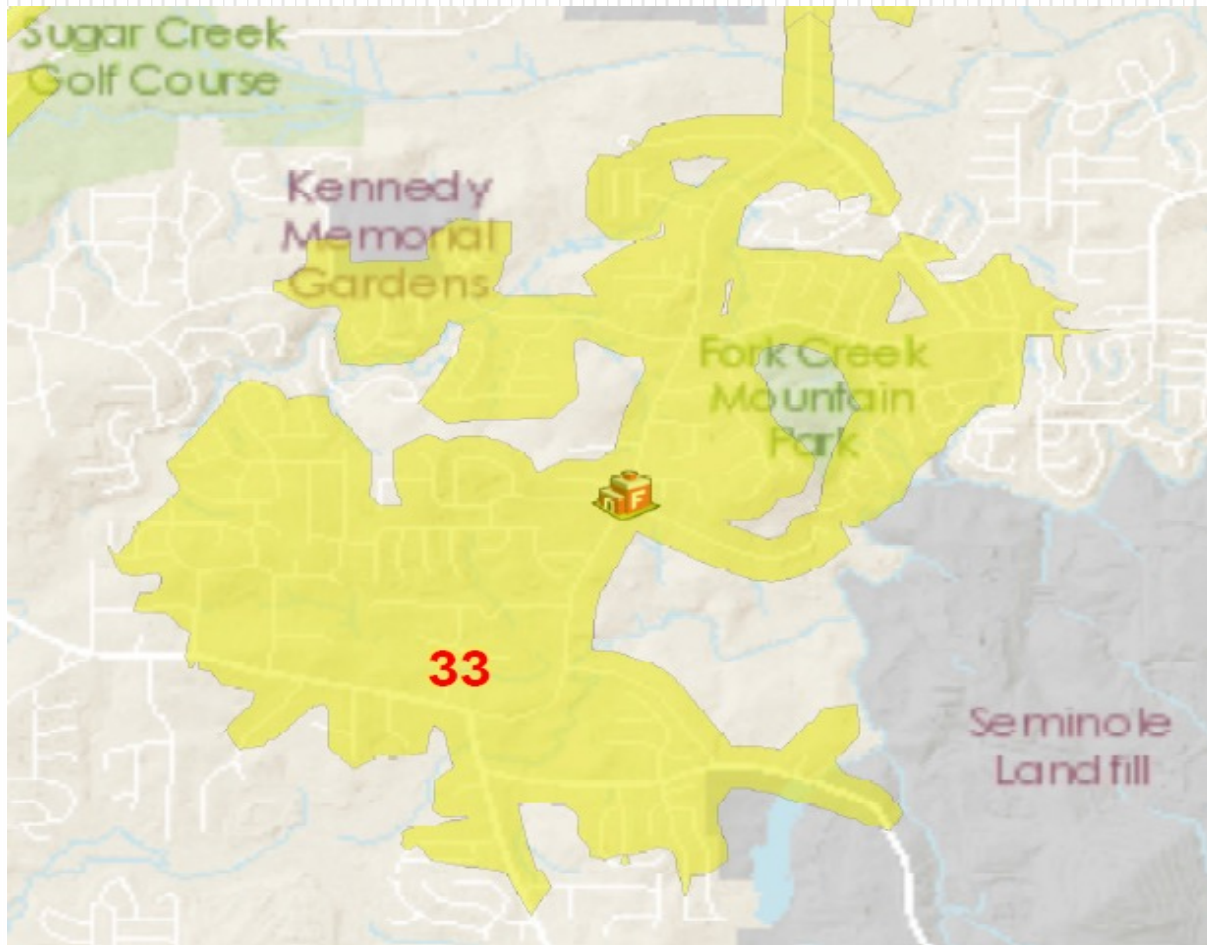


DeKalb County Fire Rescue

Fire Station #33
Unincorporated DeKalb
Panthersville Rd & Tolliver Rd



DEKALB COUNTY
SPLOST 2016



New Construction

- Would improve coverage and reduce response times in rapidly developing area
- One fire engine will be assigned and staffed at this station
- Current travel time performance in this area is 10:58 minutes



DeKalb County Fire Rescue

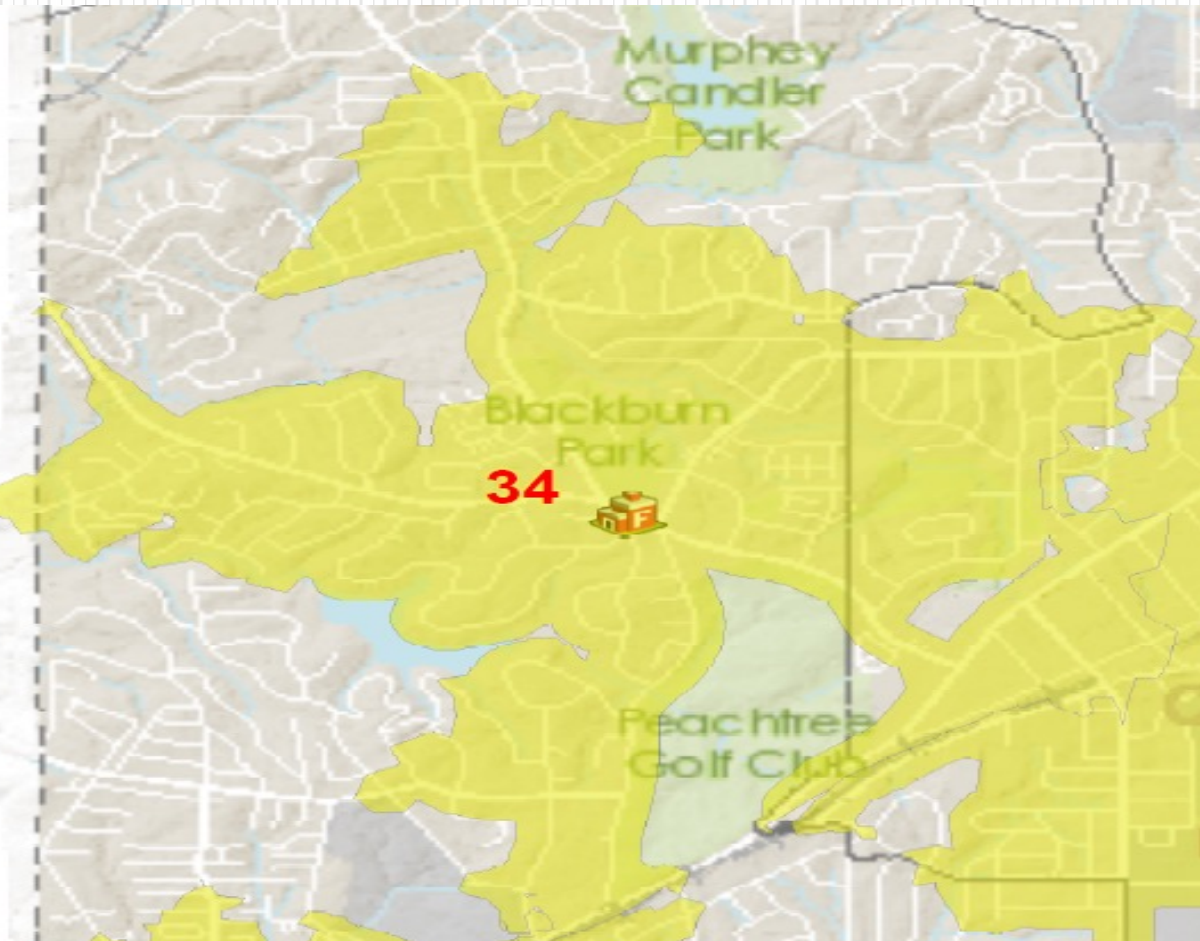
Fire Station #34

City of Brookhaven

Ashford Dunwoody Rd & Johnson Ferry Rd



DEKALB COUNTY
SPLOST 2016



New Construction

- Would improve coverage and reduce response times in second fastest growing area of the county with significant traffic congestion
- One fire engine will be assigned and staffed at this station
- Current travel time performance in this area is 12:52 minutes

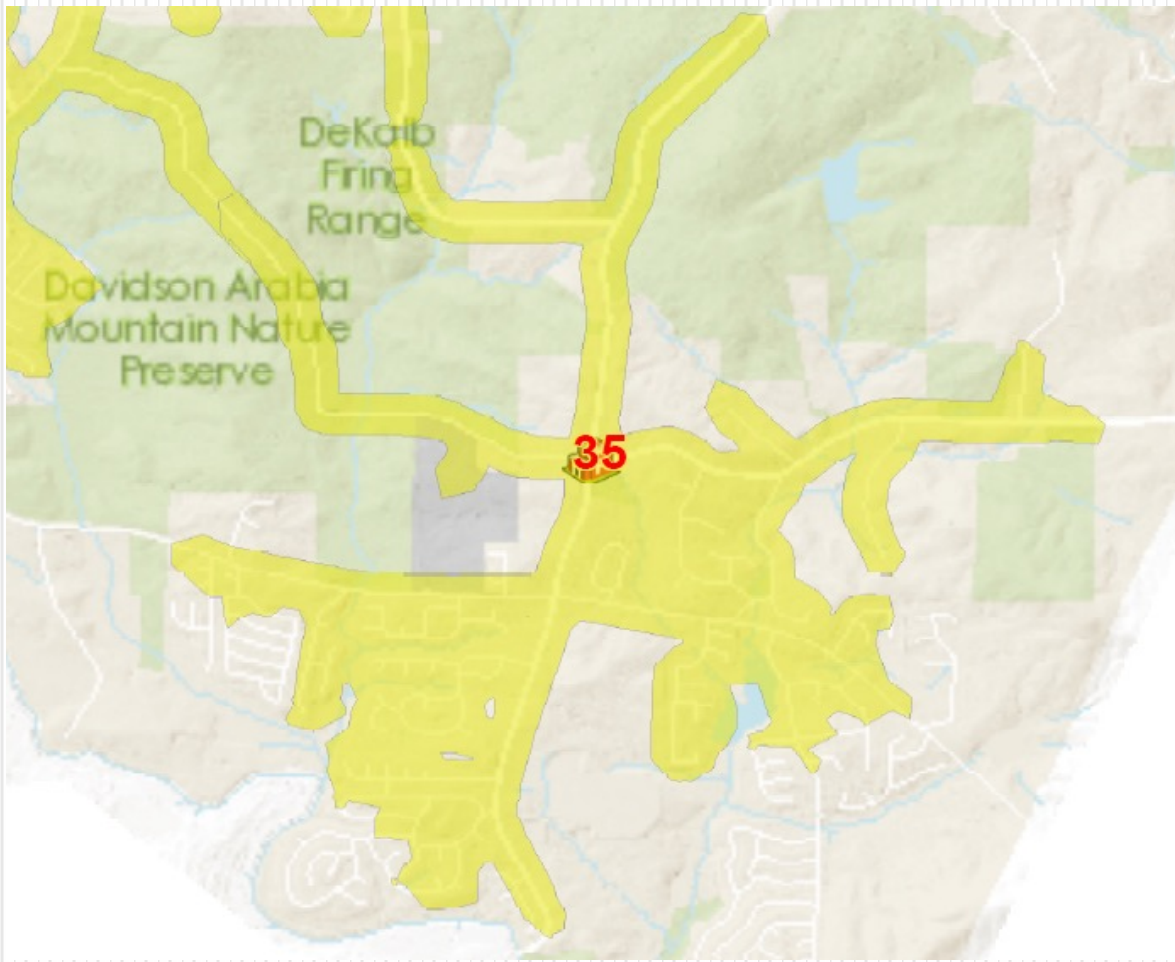


DeKalb County Fire Rescue

Fire Station #35
Unincorporated DeKalb (Arabia Mountain)
S. Goddard Rd & Klondike Rd



DEKALB COUNTY
SPLOST 2016

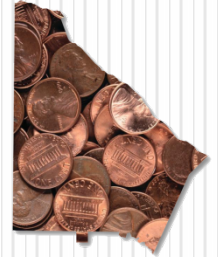


New Construction

- Would improve coverage and reduce response times in the fastest growing portion of DeKalb
- One fire engine will be assigned and staffed at this station
- Current travel time performance in this area is 13:31 minutes



DeKalb County Fire Rescue



DEKALB COUNTY
SPLOST 2016

Project list

Project: Construction of Central Fire Academy and Logistics Hub

Project description: Replace inadequate facilities by co-locating modern training academy and logistics hub together at central site. DeKalb County Fire Rescue would be able to combine the fire and emergency medical training programs that currently operate at separate sites due to size limits.

Implementation timeline: 18-24 months (Dependent on land acquisition timeline)

Estimated cost: \$25,000,000



DeKalb County Fire Rescue

Training Academy and Logistics Hub Academy Built in 1973



DEKALB COUNTY
SPLOST 2016

D.C.F.R. Recruit Class in 1978



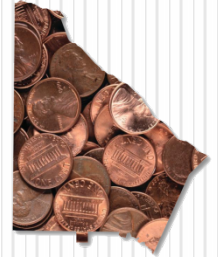
D.C.F.R. Recruit Class in 2015





DeKalb County Fire Rescue

Five Year Prioritized Implementation Plan

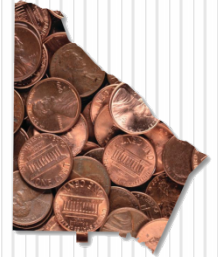


DEKALB COUNTY
SPLOST 2016

No	Project Title	Districts	City	Implementation Timeline	Matching Funds	Estimated Cost to County
1	Fire Station 5	1,4	Tucker	21 months	No	\$3,500,000
2	Fire Station 7	3,5		21 months	No	\$3,300,000
3	Fire Station 11	1,4	Tucker	21 months	No	\$3,500,000
4	Fire Station 12	1	Dunwoody	21 months	No	\$4,700,000
5	Fire Station 13	4,5		18 months	No	\$3,500,000
6	Fire Station 14	5		21 months	No	\$3,600,000
7	Fire Station 16	3,5		18 months	No	\$3,500,000
8	Quick Response Vehicle	All		12 months	No	\$250,000
9	Quick Response Vehicle	All		12 months	No	\$250,000
10	Quick Response Vehicle	All		12 months	No	\$250,000
11	Quick Response Vehicle	All		12 months	No	\$250,000
12	Quick Response Vehicle	All		12 months	No	\$250,000
13	Fire Station 27	3,5		21 months	No	\$3,880,000
14	Fire Station 28	4		21 months	No	\$3,800,000
15	Fire Station 29	5		21 months	No	\$5,130,000
16	Fire Station 30	1,2	Doraville	21 months	No	\$5,630,000
17	Fire Station 31	5		21 months	No	\$3,680,000
18	Fire Station 32	3,5		21 months	No	\$5,030,000
19	Fire Station 33	3		21 months	No	\$3,730,000
20	Fire Station 34	1,2	Brookhaven	21 months	No	\$4,080,000
21	Fire Station 35	5		21 months	No	\$3,780,000
22	Fire Academy/Logistics	All		24 months	No	\$25,000,000
Estimated Total Cost						\$90,590,000



DeKalb County Fire Rescue



DEKALB COUNTY
SPLOST 2016

Estimated project list cost

Project	Estimated Cost
Replacement of Stations	\$25,600,000
Quick Response Units	\$1,250,000
Addition of Stations	\$38,740,000
Fire Academy/Logistics Hub	\$25,000,000
Total	\$90,590,000