



4800 Ashford Dunwoody Road
Dunwoody, Georgia 30338
dunwoodyga.gov | 678.382.6700

MEMORANDUM

To: Mayor and City Council
From: Eric Johnson, Project Manager CPS
Date: July 23, 2018
Subject: **Brook Run Park Phase I Construction**

ITEM DESCRIPTION

Brook Run Park Phase I Construction Cost.

BACKGROUND

Staff presented three concept options for the phase I development of Brook Run Park at the June 11th Council Meeting which addressed several of the publics concerns, such as tree loss. At that meeting, Staff were directed to move forward with the cost of construction for the concepts presented. Working with the design consultant and the contractor, CPS has established an estimate for the phase I construction.

REQUEST

Staff requests the Mayor and Council provide direction on the current project cost and approval for Lose and Associates to move forward with the production of construction documents.

DEKALB DR.

GEORGIA WAY

EXISTING
COMMUNITY
GARDEN

EXISTING
OUTDOOR
CLASSROOM

BROOK RUN PARK

BUDGET & DESIGN OPTION

PROPOSED CURRENT PLAN PROGRAM

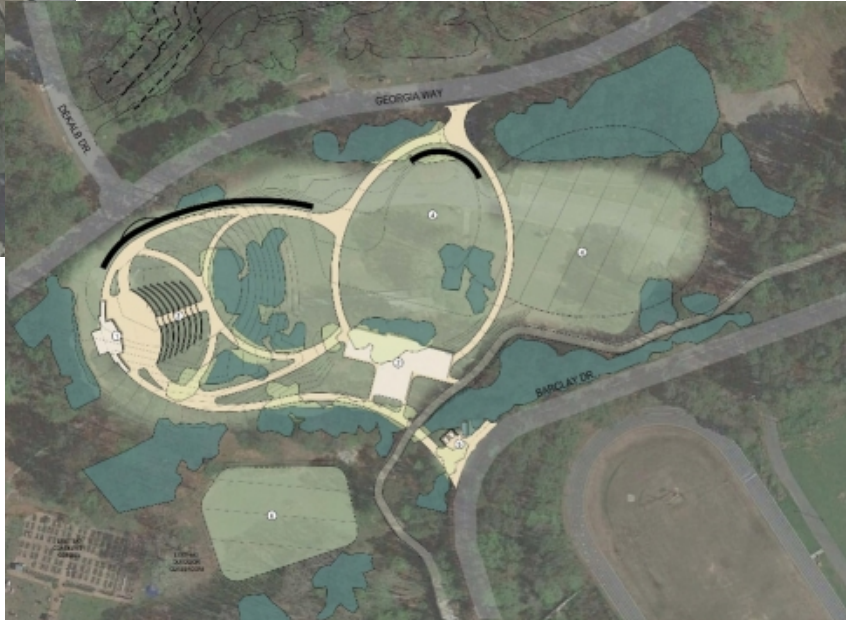
BROOK RUN PARK

Estimates:

\$5.9 million (construction budget)

- Multiuse Fields = \$3.2M
- Great Lawn = \$1.7M
- Parking / Picnic = \$800K
- New Park Entrance = \$56K
- Open Play Field = \$37K
- Disc Golf = \$30K

\$7.5 million (total construction budget)



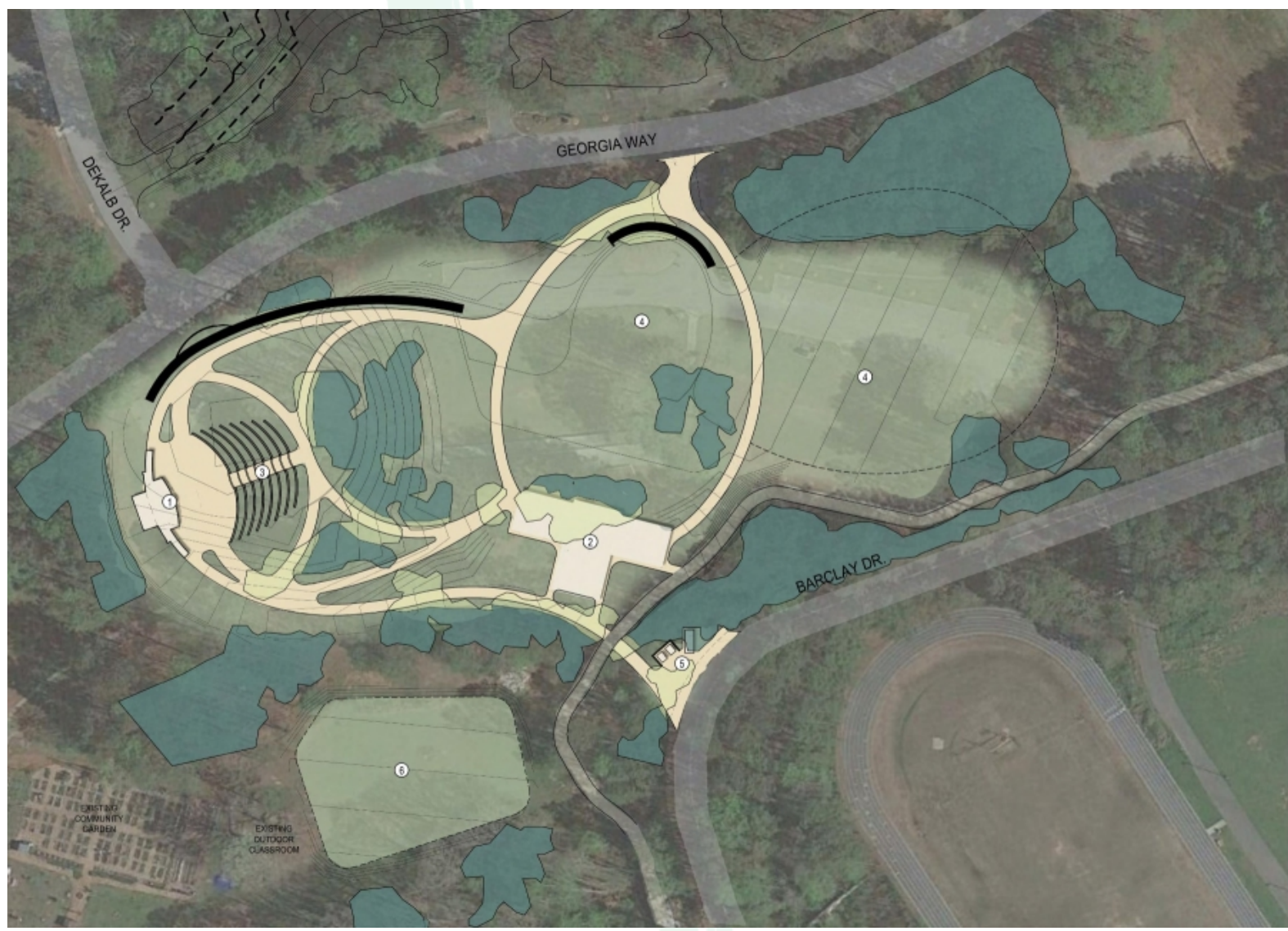
Multi-use Fields



Scope of Work:

- Retaining Walls to reduce number of trees removed
- Artificial Turf fields for lower maintenance and extended use
- Additional Parking
- Estimated cost \$3.2M

Great Lawn



LEGEND :

SITE AMENITIES

- ① BAND SHELL (MID-SIZE)
- ② PAVILION
- ③ SPECTATOR SEATING
- ④ OPEN LAWN
- ⑤ DUMPSTER / RECYCLING AREA
- ⑥ OPEN PLAY FIELD (165' x 147')

EXISTING TREES TO REMAIN

TREES TO BE REMOVED

From the 2017 Master Plan, this area includes:
 Open Lawn
 Music Performance Area
 Picnic Pavilion with Restrooms
 Walking Trails
 Lemonade Days Festival Area

After receiving public feedback, we reduced the overall disturbed area and reduced the amount of grading, which saves 40% more trees over the original plan.



Scope of Work:

- **Bandshell with Terraced seating**
- **Pavilion with Restrooms and Picnic facilities**
- **Minimize tree removal**
- **Graded lawn for future expansion**
- **Estimated Cost \$1.7M**

PARKING AND PICNIC AREA

BROOK RUN PARK



- LEGEND :**
- SITE AMENITIES**
- ① PARKING LOT (125+ SPACES)
 - ② PAVILION W/ RESTROOMS
 - ③ EXISTING TRAIL
 - ④ RAISED CROSSWALK
- EXISTING TREES TO REMAIN
 - TREES TO BE REMOVED

From the 2017 Master Plan, this area includes:
 New Parking to Replace Parking Lost at the Great Lawn
 Picnic Pavilion with Restrooms

After receiving public feedback, we reduced the amount of parking and limited disturbance to areas already disturbed, which saves 50% more trees over the original plan.



Scope of Work:

- Maximize parking with minimum tree removal
- Restrooms and Picnic Pavilion
- Estimated Cost \$800K