



4800 Ashford Dunwoody Road
Dunwoody, Georgia 30338
dunwoodyga.gov | 678.382.6700

MEMORANDUM

To: Mayor and City Council

From: Brent Walker, Parks Director

Date: June 11, 2018

Subject: **Brook Run Park Design**

ITEM DESCRIPTION

Brook Run Park design update

BACKGROUND

Lose and Associates presented three concept options for the phase I development of Brook Run Park at the May 21st Council Meeting. Since that time, Staff has collected public input through the online project page and a public meeting held June 4th. With this information and comments made by Council, the design has been updated for consideration.

REQUEST

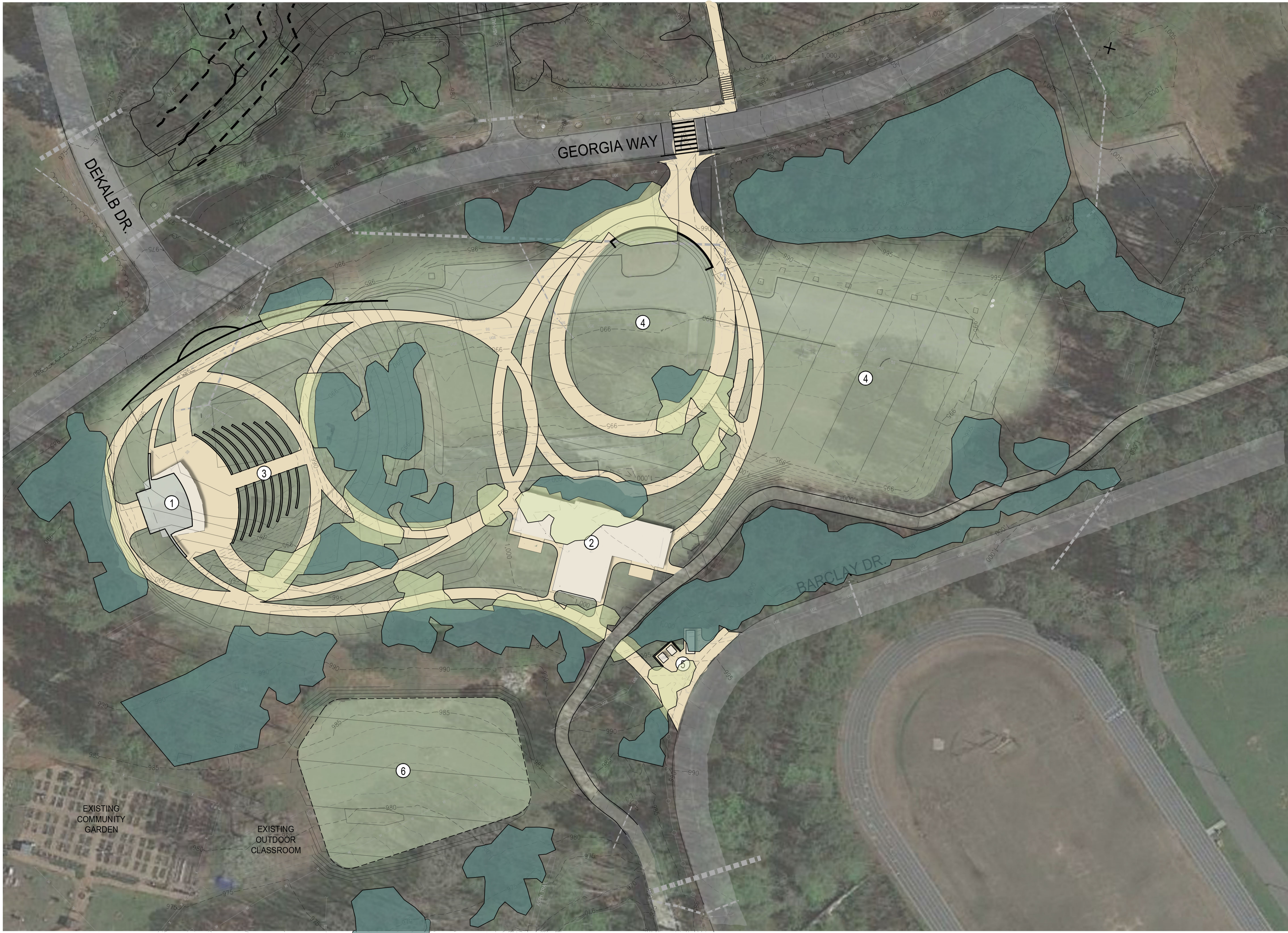
Staff requests the Mayor and Council provide direction on the current project design and approval for Lose and Associates to move forward with the production of construction documents.

Denis Shortal Mayor
Eric Linton, ICMA-CM City Manager
Sharon Lowery, CMC City Clerk

Pam Tallmadge City Council Post 1
Jim Riticher City Council Post 2
Tom Lambert City Council Post 3

Terry Nall City Council Post 4
Lynn Deutsch City Council Post 5
John Heneghan City Council Post 6

Packet page:...



LEGEND :

SITE AMENITIES

- ① BAND SHELL
- ② PAVILION
- ③ SPECTATOR SEATING
- ④ OPEN LAWN
- ⑤ DUMPSTER / RECYCLING AREA
- ⑥ OPEN PLAY FIELD (165' x 140')

EXISTING TREES TO REMAIN

TREES TO BE REMOVED

From the 2017 Master Plan, this area includes:

- Open Lawn
- Music Performance Area
- Picnic Pavilion with Restrooms
- Walking Trails
- Lemonade Days Festival Area

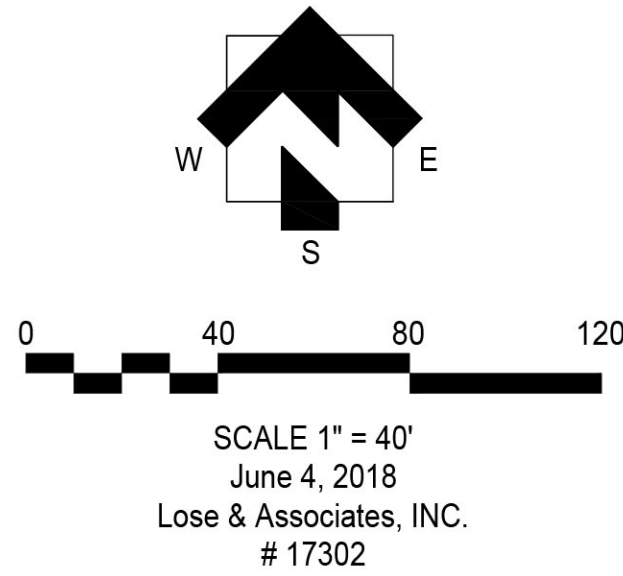
After receiving public feedback, we reduced the overall disturbed area and reduced the amount of grading, which saves 35% more trees over the original plan.



From the 2017 Master Plan, this area includes:
2 Soccer Fields
Playground
Concession/Restroom Building

After receiving public feedback, we added a retaining wall, which saves the same amount of trees as the original plan.

- LEGEND :**
SITE AMENITIES
- ① MULTI-USE FIELD (80 x 120 YARDS)
 - ② PAVILION W/ RESTROOMS & CONCESSIONS
 - ③ PARKING (EXISTING TO REMAIN)
 - ④ FUTURE PLAYGROUND
 - ⑤ ACCESS ROAD
 - ⑥ MAINTENANCE BUILDING
- EXISTING TREES TO REMAIN
- TREES TO BE REMOVED





LEGEND :

SITE AMENITIES

- ① PARKING LOT (125 +/- SPACES)
- ② PAVILION W/ RESTROOMS
- ③ EXISTING TRAIL
- ④ RAISED CROSSWALK

EXISTING TREES TO REMAIN

TREES TO BE REMOVED

From the 2017 Master Plan, this area includes:
New Parking to Replace Parking Lost at the
Great Lawn
Picnic Pavilion with Restrooms

After receiving public feedback, we reduced
the amount of parking and limited disturbance
to areas already disturbed, which saves 50%
more trees over the original plan.



PARKING / PICNIC AREA

BROOK RUN PARK IMPROVEMENTS

DUNWOODY, GA

0 40 80 120

SCALE 1" = 40'

June 4, 2018

Lose & Associates, INC.

17302