



4800 Ashford Dunwoody Road  
Dunwoody, Georgia 30338  
dunwoodyga.gov | 678.382.6700

## MEMORANDUM

To: Mayor and City Council

From: Brent Walker, Parks and Recreation Director

Date: April 27<sup>th</sup>, 2020

Subject: Contract Award for the City of Dunwoody Parks and Recreation Signage

---

### ITEM DESCRIPTION

Staff released an Invitation to Bid (ITB) 20-03 for the manufacturing and installation of the new parks entry signage and kiosks. Hilton Displays LLC is the apparent low bid.

### BACKGROUND

In 2019 Staff worked with Sky Design to complete the bid documents for the new park entry signs and kiosks throughout the park system. The design mimics the look and materials the City has used for the Dunwoody Trailway signage. In February the City solicited an Invitation to Bid for the manufacturing and installation of the signs. Bids were received on March 16, the results are below:

<b>Hilton Displays</b>	<b>\$146,207</b>
Design Team Sign Company	\$151,308
Creative Impressions	\$152,310
Lee's Signs	\$176,680
ASI	\$178,910
Canam Signs and Imaging	\$214,500
Pinnacle 33 Signage Solutions	\$307,429

### FUNDING

Funding for this project will be appropriated from the Park Operations budget

### RECOMMENDATION

Staff respectfully requests that Council: (1) award Purchasing Contract 20-03, manufacturing and installation of City of Dunwoody Parks and Recreation Signage, to Hilton Displays LLC. in an amount not to exceed \$160,830, which includes a 10% contingency (2) authorize staff to provide funding for the contract; and (3) authorize the City Manager to execute the necessary documents following satisfactory review by legal counsel.

**Lynn Deutsch** Mayor  
**Eric Linton, ICMA-CM** City Manager  
**Sharon Lowery, CMC** City Clerk

**Pam Tallmadge** City Council Post 1  
**Jim Riticher** City Council Post 2  
**Tom Lambert** City Council Post 3

**Stacey Harris** City Council Post 4  
**Joe Seconder** City Council Post 5  
**John Heneghan** City Council Post 6

Packet page:...



**City of Dunwoody - Parks Signage**  
**Design Intent Bid Documents**  
12.02.2019  
Project #31538.00  
Rev. #0






**sky**design  
55 Ivan Allen Jr. Boulevard, Suite 100  
Atlanta, GA 30308  
404.688.4702

## Drawing List



[illegible]

## SIGNAGE PACKAGE NOTES AND FINISHES

## PAINT SCHEDULE

	<b>P1</b>	Benjamin Moore <i>460 Herb Bouquet</i>
	<b>P2</b>	Benjamin Moore <i>447 Holiday Wreath</i>
	<b>P3</b>	Benjamin Moore Exterior Ready-Mixed <i>E-77 Sail Cloth</i>
	<b>P4</b>	Benjamin Moore <i>HC-80 Bleeker Beige*</i> <i>*Thoroughcoat Finish</i>
	<b>P5</b>	Matthews Paint <i>MP09900 Greenhorn</i>
	<b>P6</b>	Matthews Paint <i>MP11372 Urban Forest</i>

## VINYL SCHEDULE

-  **V1** Oralcal  
951-010 - White
-  **V2** 3M Digital Print, Matte Finish,  
UV Laminate, Exterior Grade

## MATERIAL SCHEDULE



**M1**
Landmark Stone - Chestnut Limestone  
*Chestnut Limestone | [www.glengerybrick.com](http://www.glengerybrick.com) | 859-235-9636*



**M2**
Aluminum



**M3**
Magnetic Digital Print



**M4**
Continental Cast Stone - Smooth Face  
*1103 Whitestone | [continentalcaststone.com/colors/default.htm](http://continentalcaststone.com/colors/default.htm)*

## HARDWARE SCHEDULE

**H1** Outdoor Enclosed Bulletin Board  
 24W x 36H  
[www.alphabetsigns.com/signs/outdoor-enclosed-bulletin-board-24w-x-36h.html](http://www.alphabetsigns.com/signs/outdoor-enclosed-bulletin-board-24w-x-36h.html)

## 1 Project Finishes

ABCDEFGHIJKLMNOPQRSTUVWXYZ  
abcdefghijklmnopqrstuvwxyz 0123456789

**TYPEFACE 1** - Today Sans Serif Medium

ABCDEFGHIJKLMNOPQRSTUVWXYZ  
abcdefghijklmnopqrstuvwxyz 0123456789

**TYPEFACE 2 - Univers 55 Roman**

## 2 Project Typefaces

## GENERAL NOTES

- FIELD SURVEY IS REQUIRED PRIOR TO PRODUCING FINAL SHOP DRAWINGS TO VERIFY ARCHITECTURAL INTEGRITY & LAYOUT. ALL DRAWINGS IN THIS PACKAGE ARE FOR INTENT ONLY. NO DIMENSIONS HAVE BEEN CONFIRMED. RESPONSIBILITY FOR ALL FIELD VERIFICATION LIES WITH SIGN FABRICATOR.
- ALL INSTALLATION/MOUNTING TO COMPLY WITH LOCAL ORDINANCE/ADA.

## TYPICAL NOTES

- REFER TO DRAWING NOTES FOR MATERIAL THICKNESS AND/OR DIAMETER UNLESS SPECIFICALLY NOTED IN THE FINISH SCHEDULE.
- BID ALTERNATE PRICING SHOULD BE INCLUDED ON BID SUMMARY FORM IN THE CORRESPONDING BID ALTERNATIVE COLUMN.

## ASSEMBLY SPECIFICATIONS

- ALL HARDWARE TO BE SECURED WITH LOCTITE OR EQUIVALENT TO DETER VANDALISM.

## FABRICATION SPECIFICATIONS

- SEAMLESS CONSTRUCTION; ALL SEAMS/WELDS TO BE FILLED, GROUND, SANDED, AND FINISHED SMOOTH.
- NO VISIBLE FASTENERS UNLESS THEY ARE SPECIFICALLY PART OF DESIGN INTENT.
- NO ALTERNATES MAY BE INTRODUCED UNLESS CLEARLY OUTLINED BY CONTRACTOR AND APPROVED BY OWNER AND DESIGNER.
- ALL CABINETS TO BE .125" ALUMINUM STOCK.
- ALL CHANNEL LETTERS TO BE MINIMUM .063" ALUMINUM STOCK RETURNS AND .125" FRONT AND REAR FACES UNLESS OTHERWISE SPECIFIED.
- CAP ENDS OF ALL TUBING UNLESS OTHERWISE SPECIFIED.

### 3 General Notes

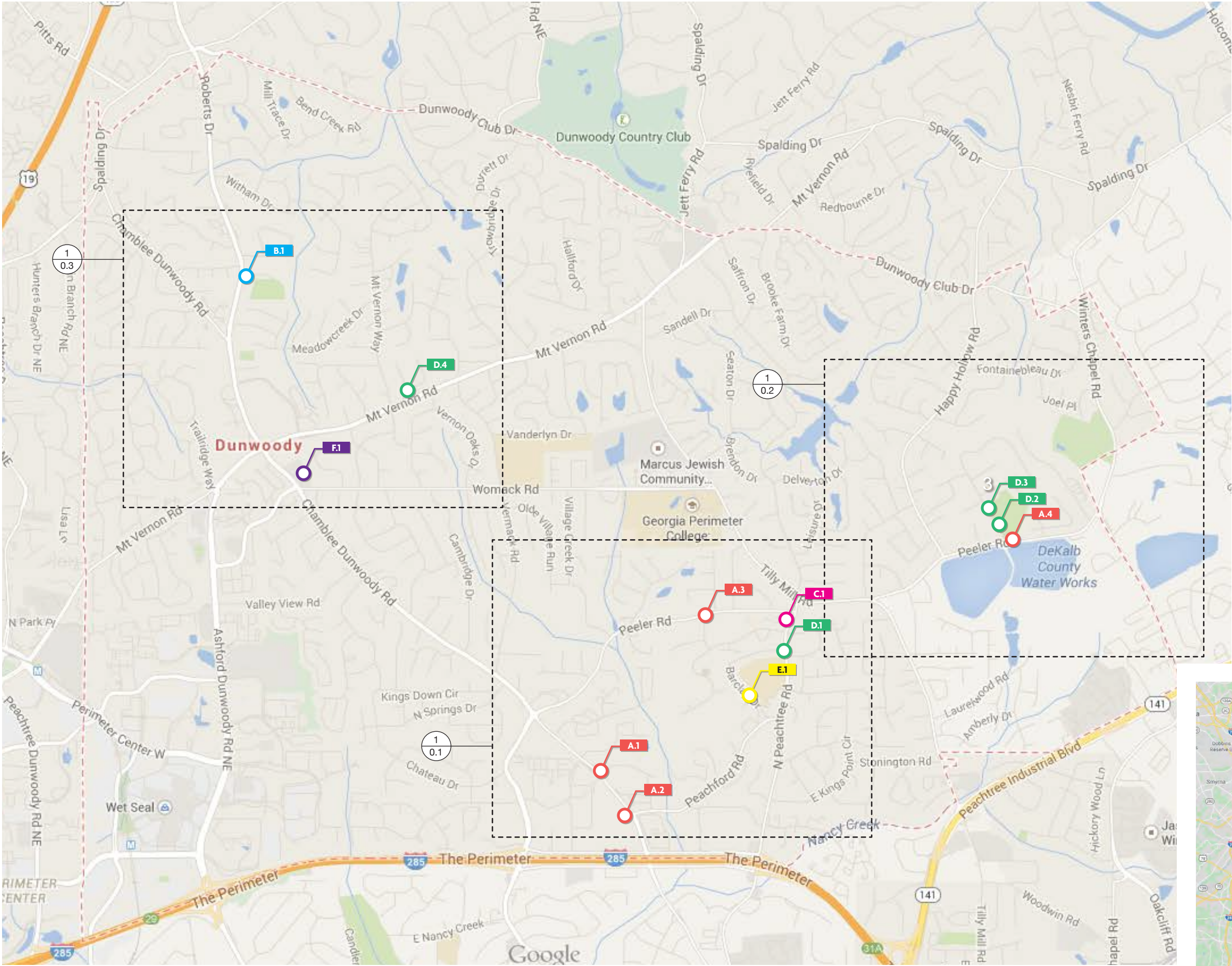


## 4 Project Logos

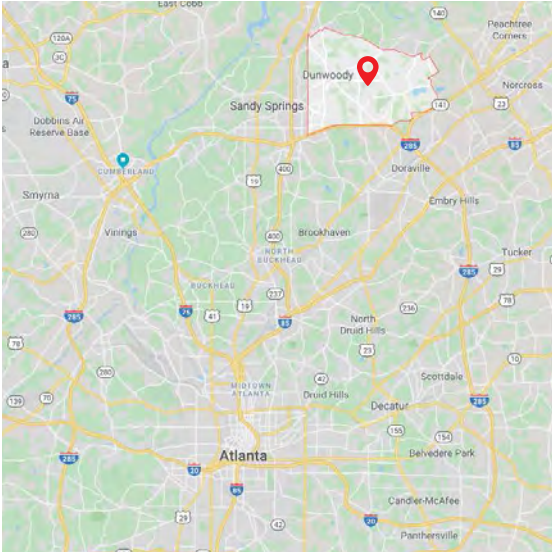








1 DUNWOODY, GA PARK LOCATIONS  
SCALE: NTS

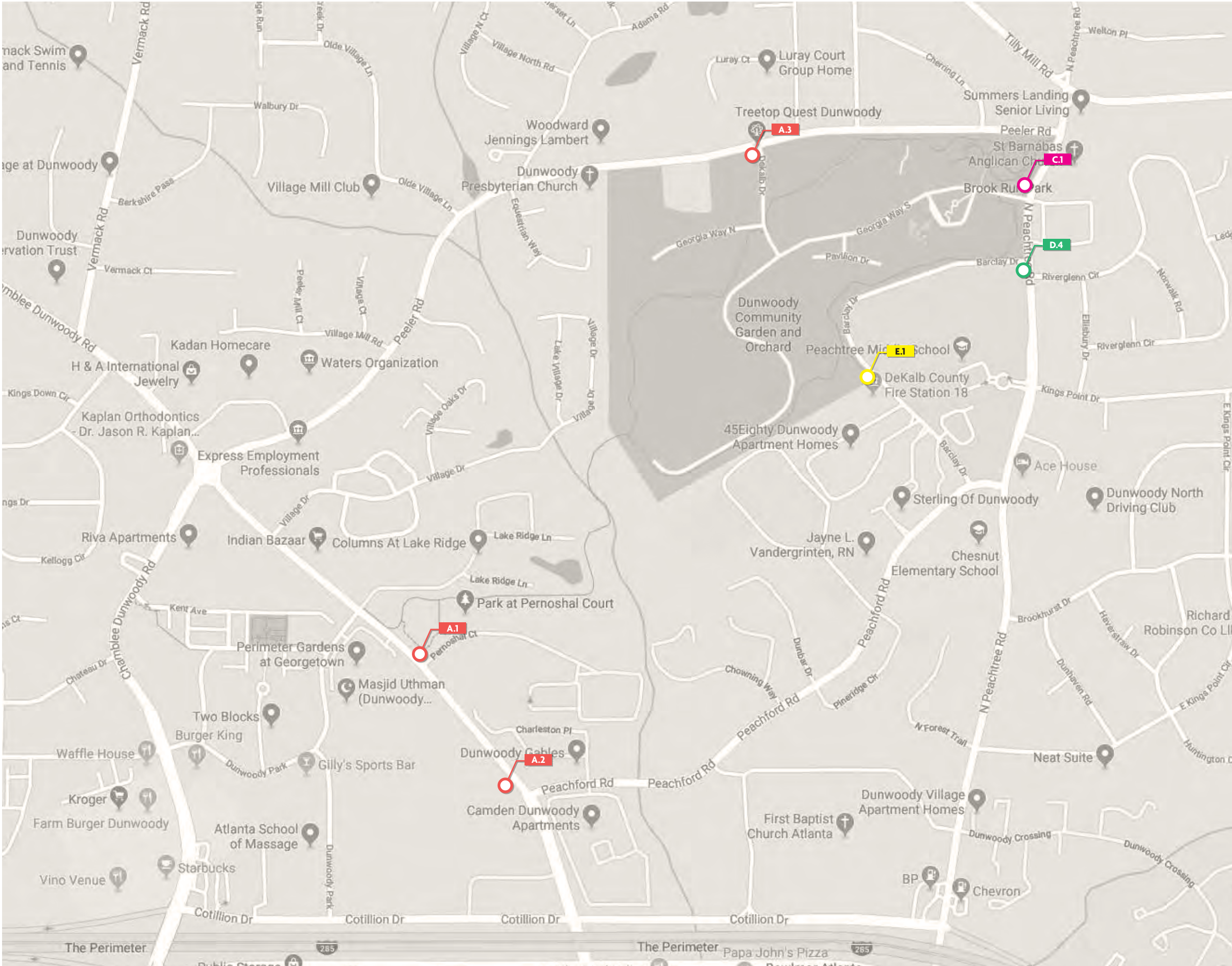


2 REGIONAL MAP  
SCALE: NTS

LEGEND	
SIGN TYPE A	
1	Pernoshal Park
2	Shallowford Annex
3	Brook Run Park
4	Windwood Hollow Park
SIGN TYPE B	
1	Dunwoody Park & Nature Center
SIGN TYPE C	
1	Brook Run Park
SIGN TYPE D	
1	Brook Run Park
2	Windwood Hollow Park
3	Windwood Hollow Park
4	Vernon Oaks Park
SIGN TYPE E	
1	Brook Run Park
SIGN TYPE F	
1	Dunwoody Cultural Arts Center & Library







1 DUNWOODY, GA PARK LOCATIONS  
SCALE: NTS

LEGEND

CITY OF DUNWOODY

A	Park Identification (Standard)
B	Park Identification (Updatable)
C	Park Identification (Large)
D	Park Identification (Puck)
E	Park Identification (Double Puck)
F	Park Identification (Co-Branded)

Sign types are not indicated in scale (for general reference only).

Sign types colored in legend are relevant to SLP shown.

All locations will require additional review during contract administration phase to determine exact orientation, verbiage and placement.

Sign requires electrical.

LOCATION KEY

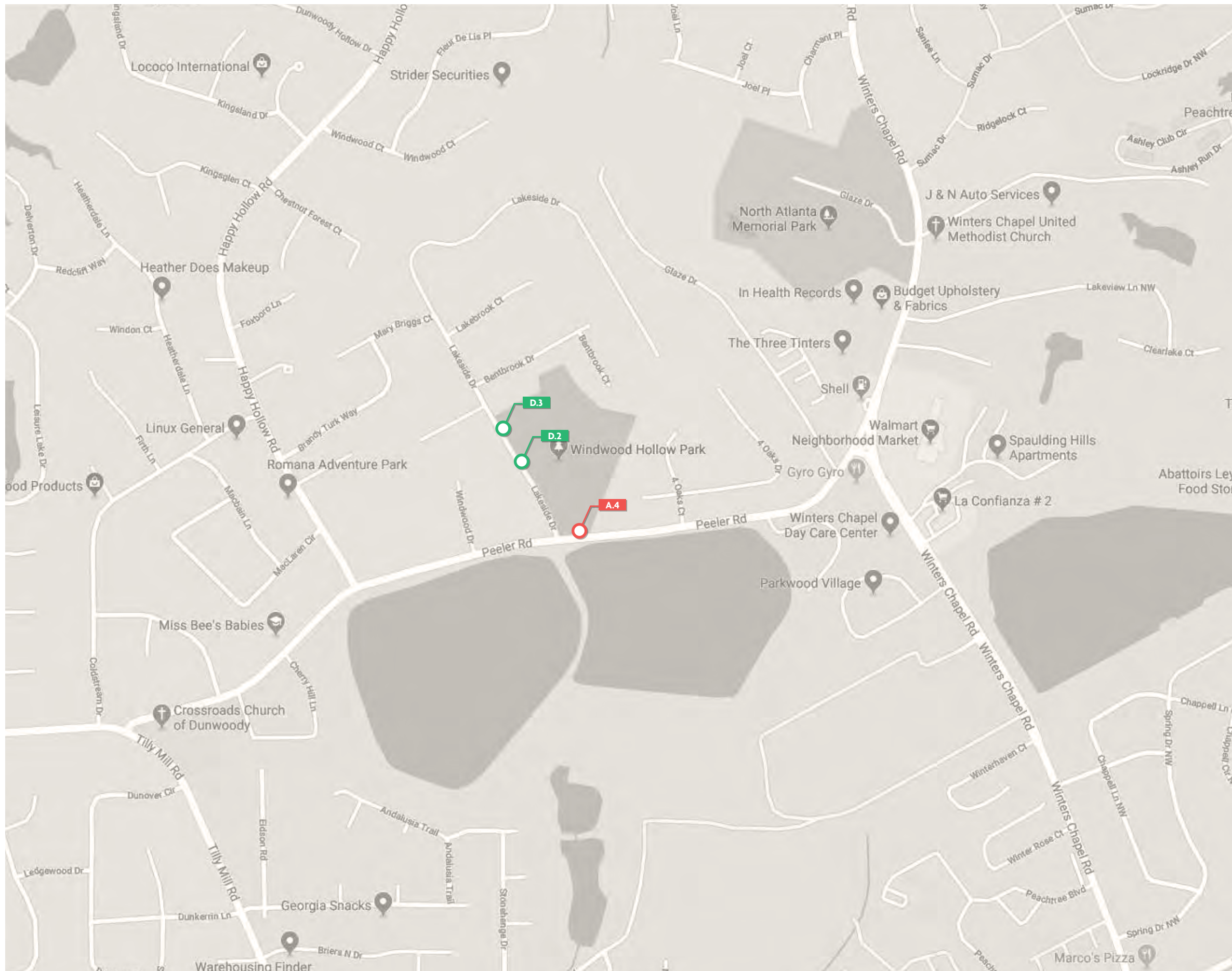
L.#



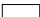




SIGN TYPE

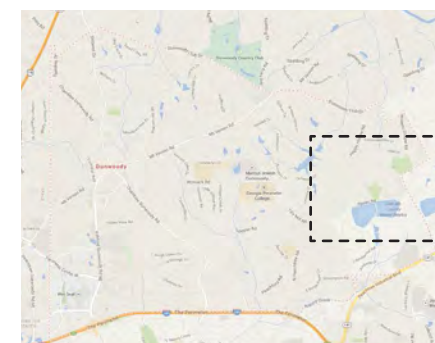
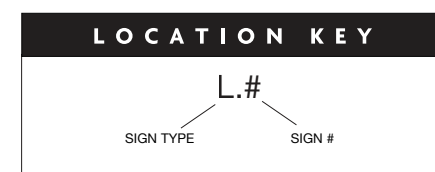
SIGN #

2 DUNWOODY, GA - REFERENCE KEY  
SCALE: NTS





LEGEND	
CITY OF DUNWOODY	
	A Park Identification ( <i>Standard</i> )
	B Park Identification ( <i>Updatable</i> )
	C Park Identification ( <i>Large</i> )
	D Park Identification ( <i>Puck</i> )
	E Park Identification ( <i>Double Puck</i> )
	F Park Identification ( <i>Co-Branded</i> )
<p>Sign types are not indicated in scale (for general reference only).</p>	
<p>Sign types colored in legend are relevant to SLP shown.</p>	
<p>All locations will require additional review during contract administration phase to determine exact orientation, verbiage and placement.</p>	
<p> Sign requires electrical.</p>	



1 DUNWOODY, GA PARK LOCATIONS  
SCALE: NTS

2 DUNWOODY, GA - REFERENCE KEY  
SCALE: NTS







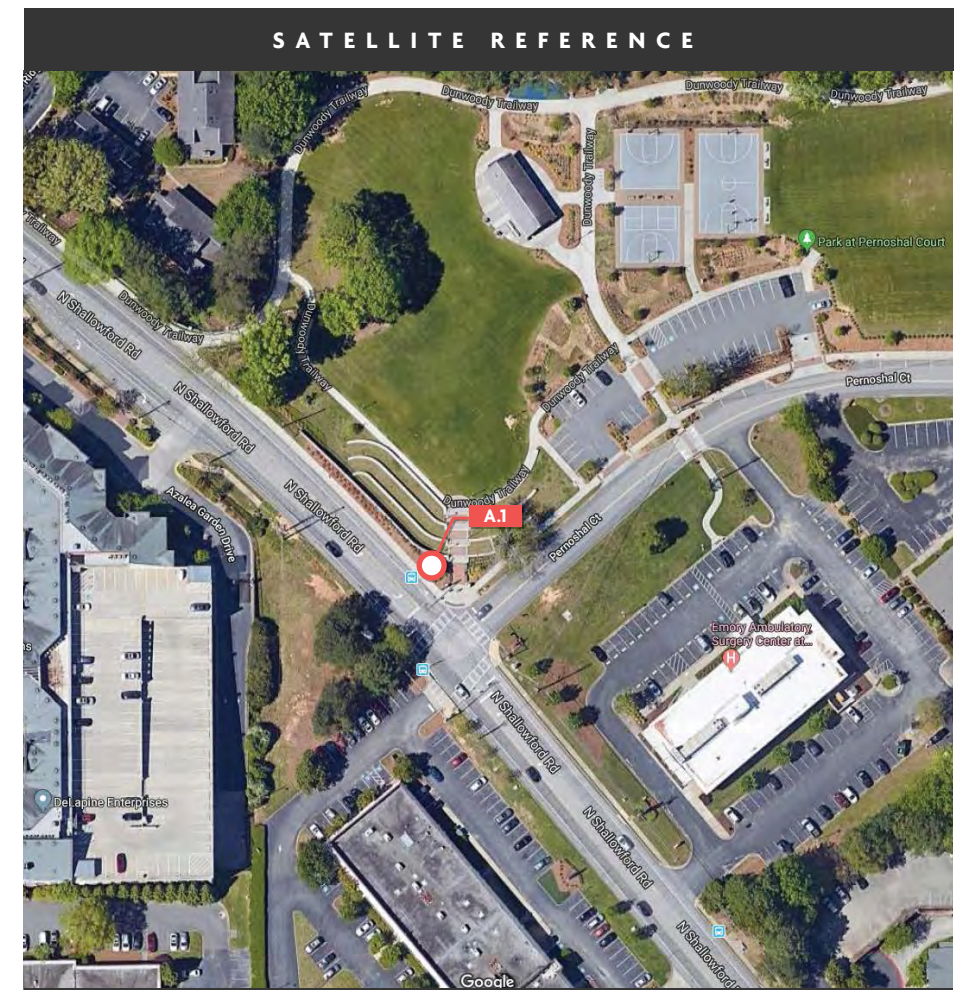
BELOW SCHEMATIC IMAGE SHOWN FOR  
REFERENCE ONLY. REFER TO DRAWING SET FOR  
DETAILS, SPECS, MEASUREMENTS, ETC.



1 CONTEXTUAL PLACEMENT IMAGE  
SCALE: NTS

# PERNOSHAL PARK

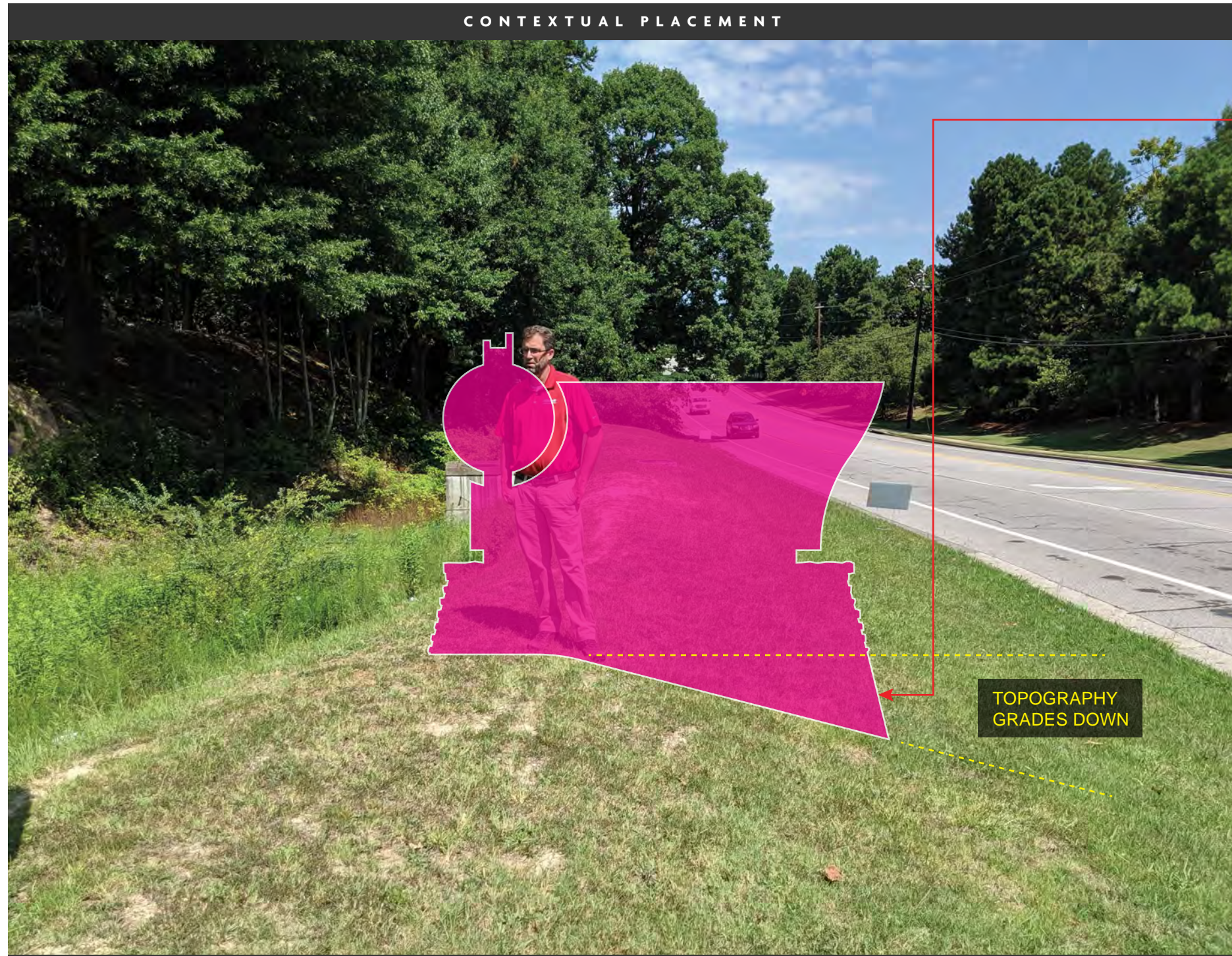
4575 N Shallowford Rd, Dunwoody, GA 30338



2 SATELLITE REFERENCE IMAGE  
SCALE: NTS



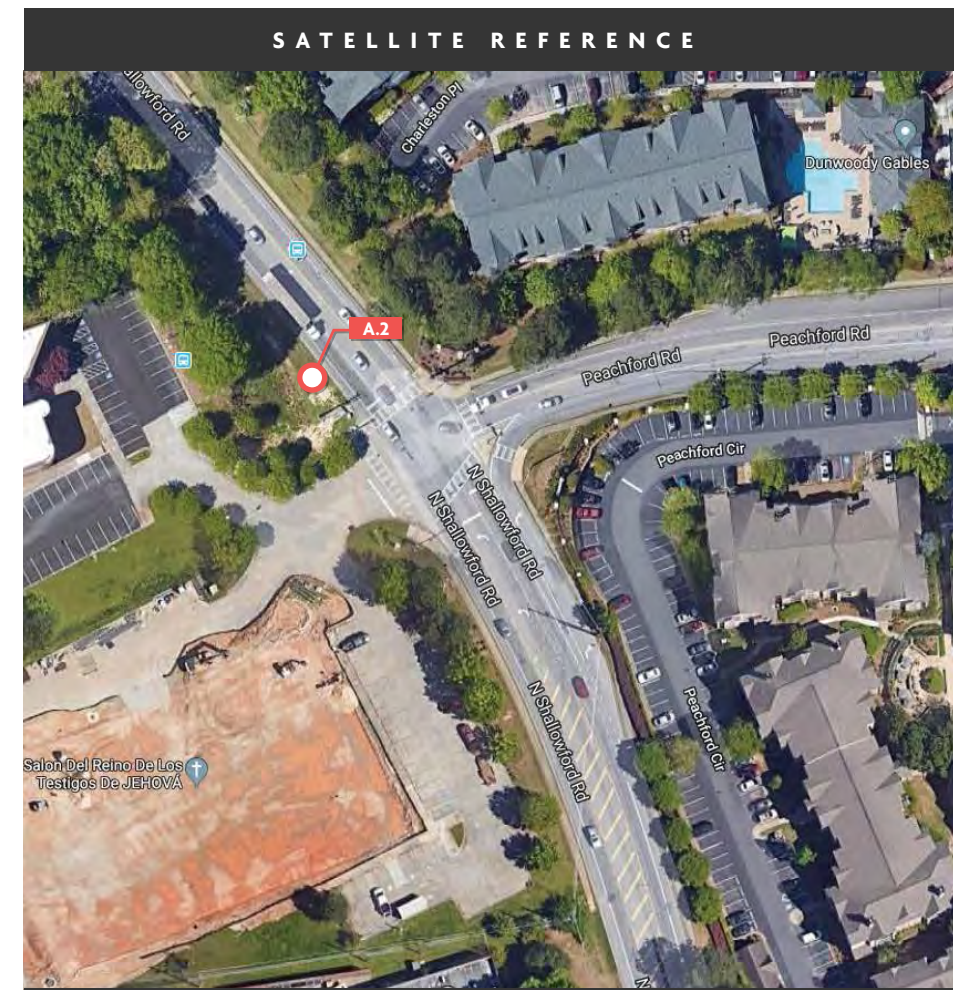
BELOW SCHEMATIC IMAGE SHOWN FOR  
REFERENCE ONLY. REFER TO DRAWING SET FOR  
DETAILS, SPECS, MEASUREMENTS, ETC.



1 CONTEXTUAL PLACEMENT IMAGE  
SCALE: NTS

# SHALLOWFORD ANNEX

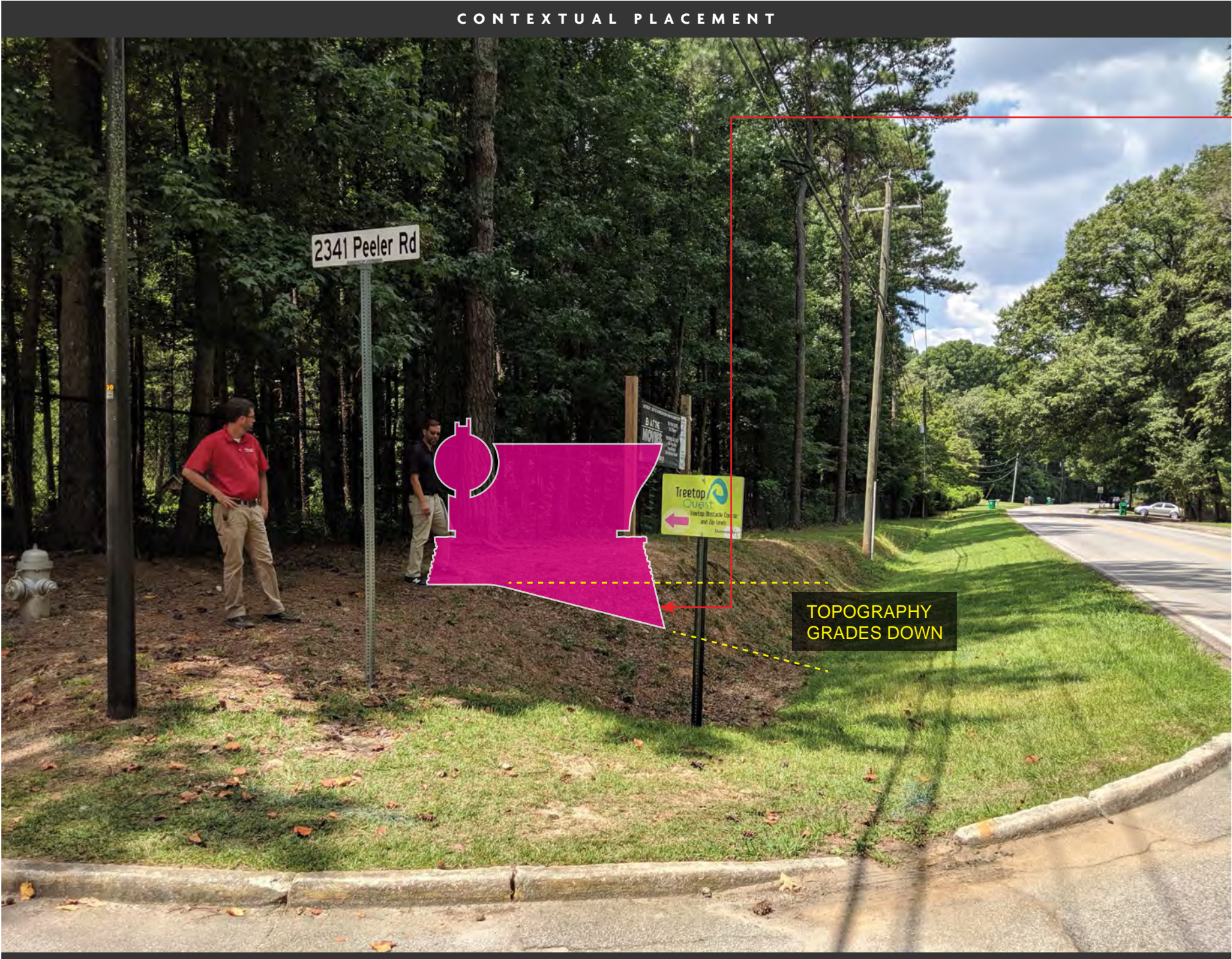
4470 N Shallowford Rd, Dunwoody, GA 30338



2 SATELLITE REFERENCE IMAGE  
SCALE: NTS



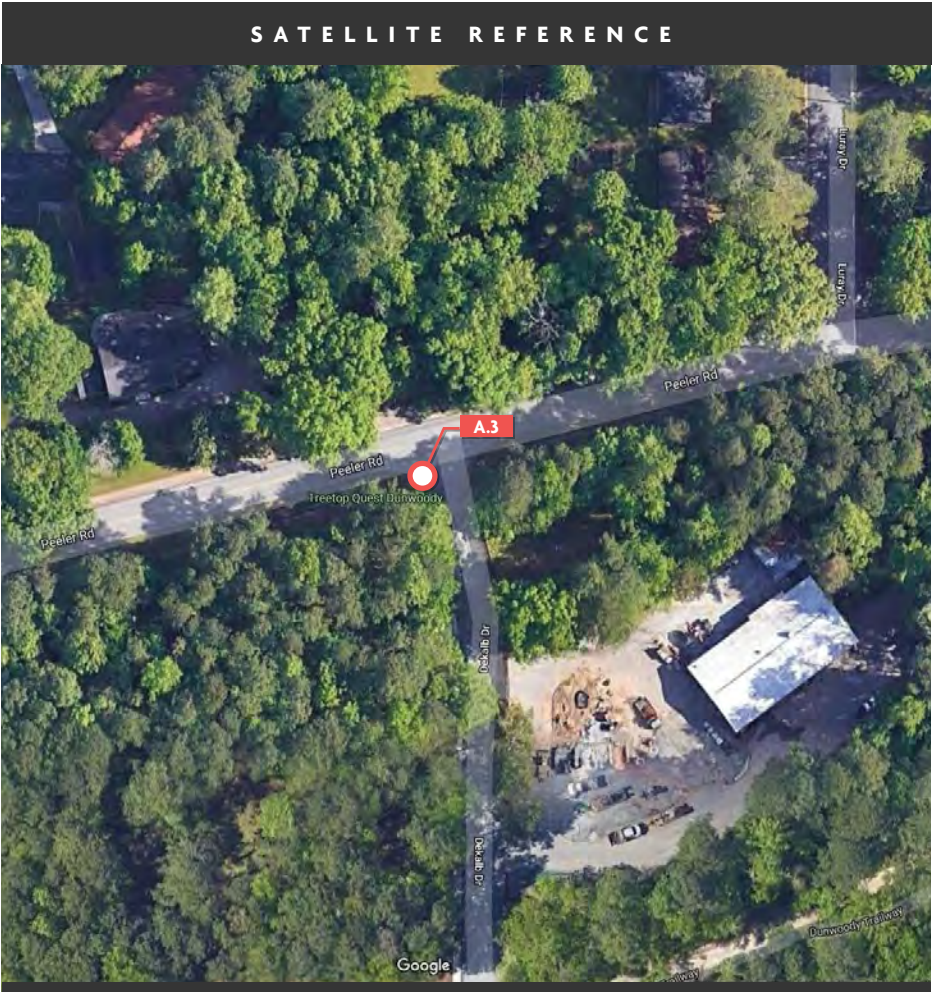
BELOW SCHEMATIC IMAGE SHOWN FOR REFERENCE ONLY. REFER TO DRAWING SET FOR DETAILS, SPECS, MEASUREMENTS, ETC.



1 CONTEXTUAL PLACEMENT IMAGE  
SCALE: NTS

# BROOK RUN PARK

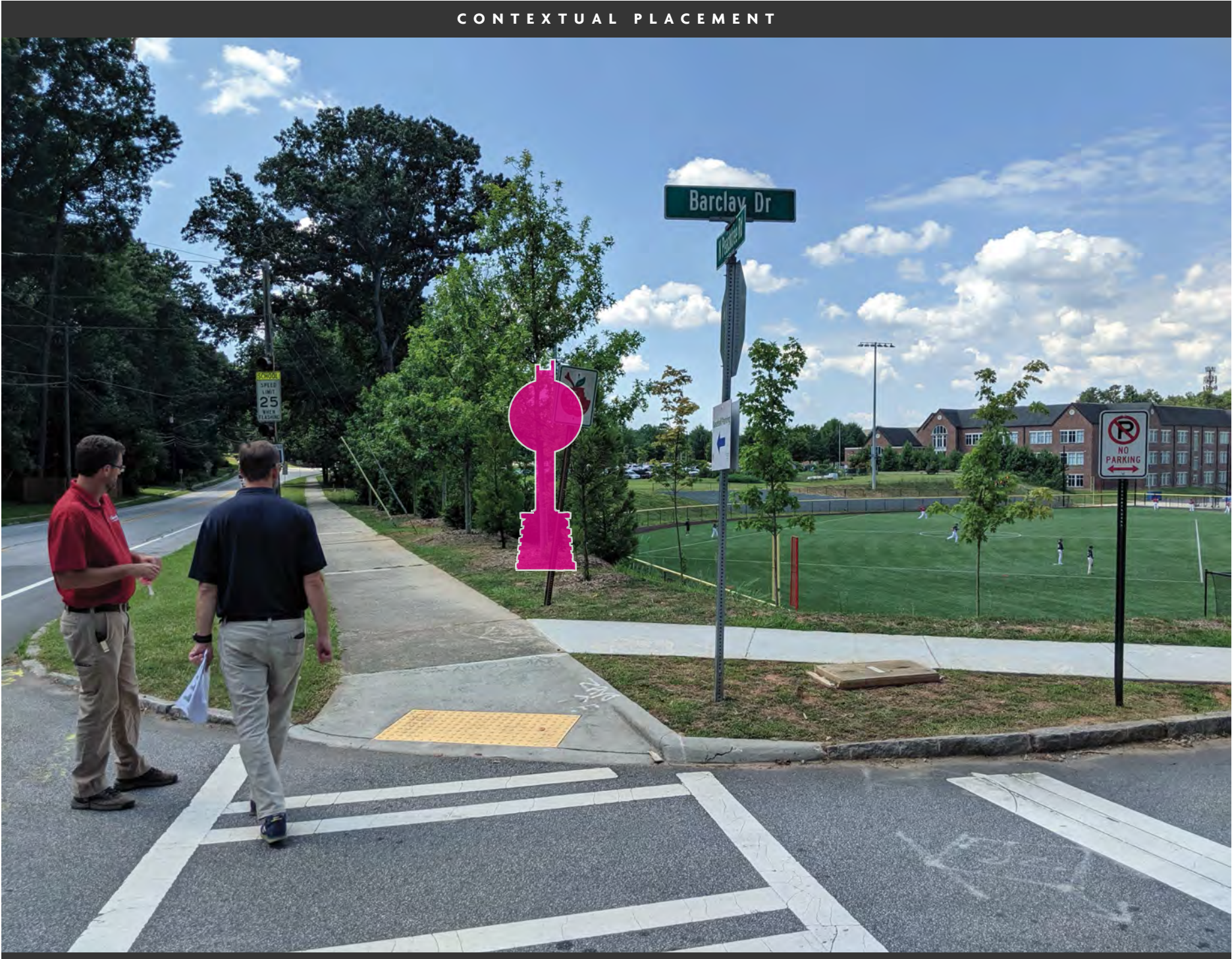
2341 Peeler Rd, Dunwoody, GA 30338



2 SATELLITE REFERENCE IMAGE  
SCALE: NTS



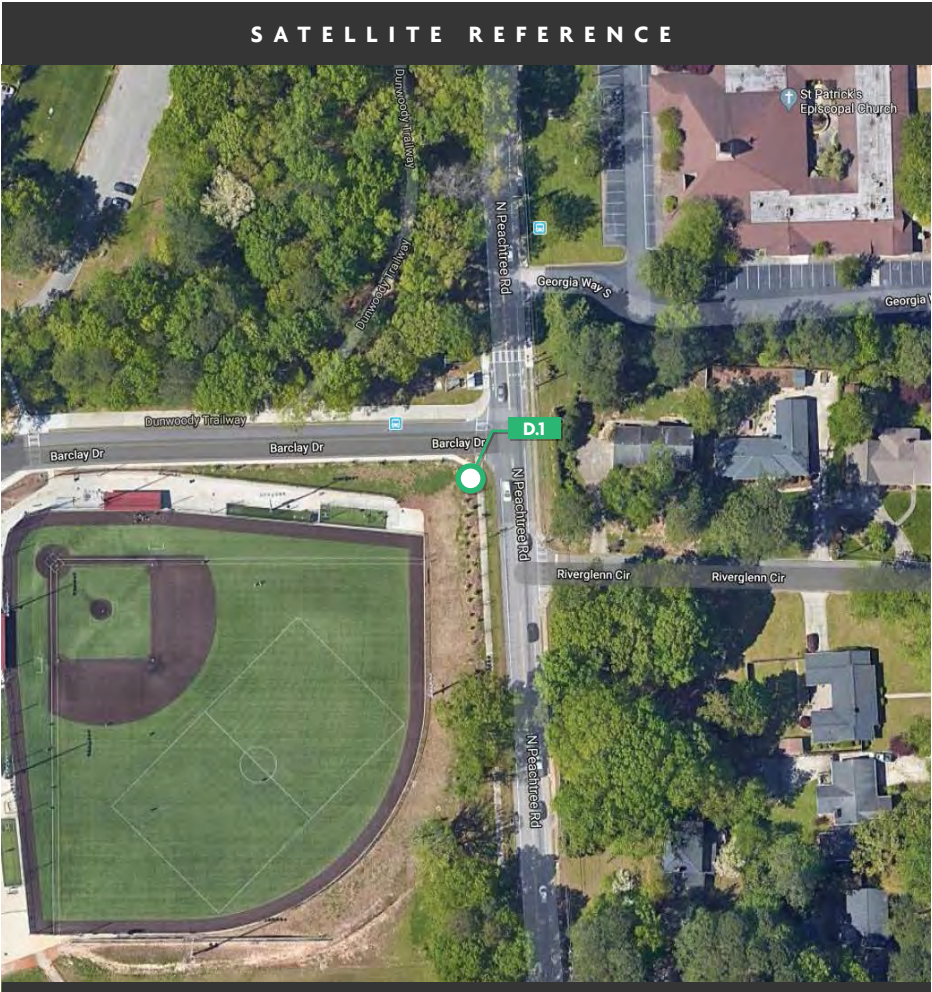
BELOW SCHEMATIC IMAGE SHOWN FOR  
REFERENCE ONLY. REFER TO DRAWING SET FOR  
DETAILS, SPECS, MEASUREMENTS, ETC.



1 CONTEXTUAL PLACEMENT IMAGE  
SCALE: NTS

# BROOK RUN PARK

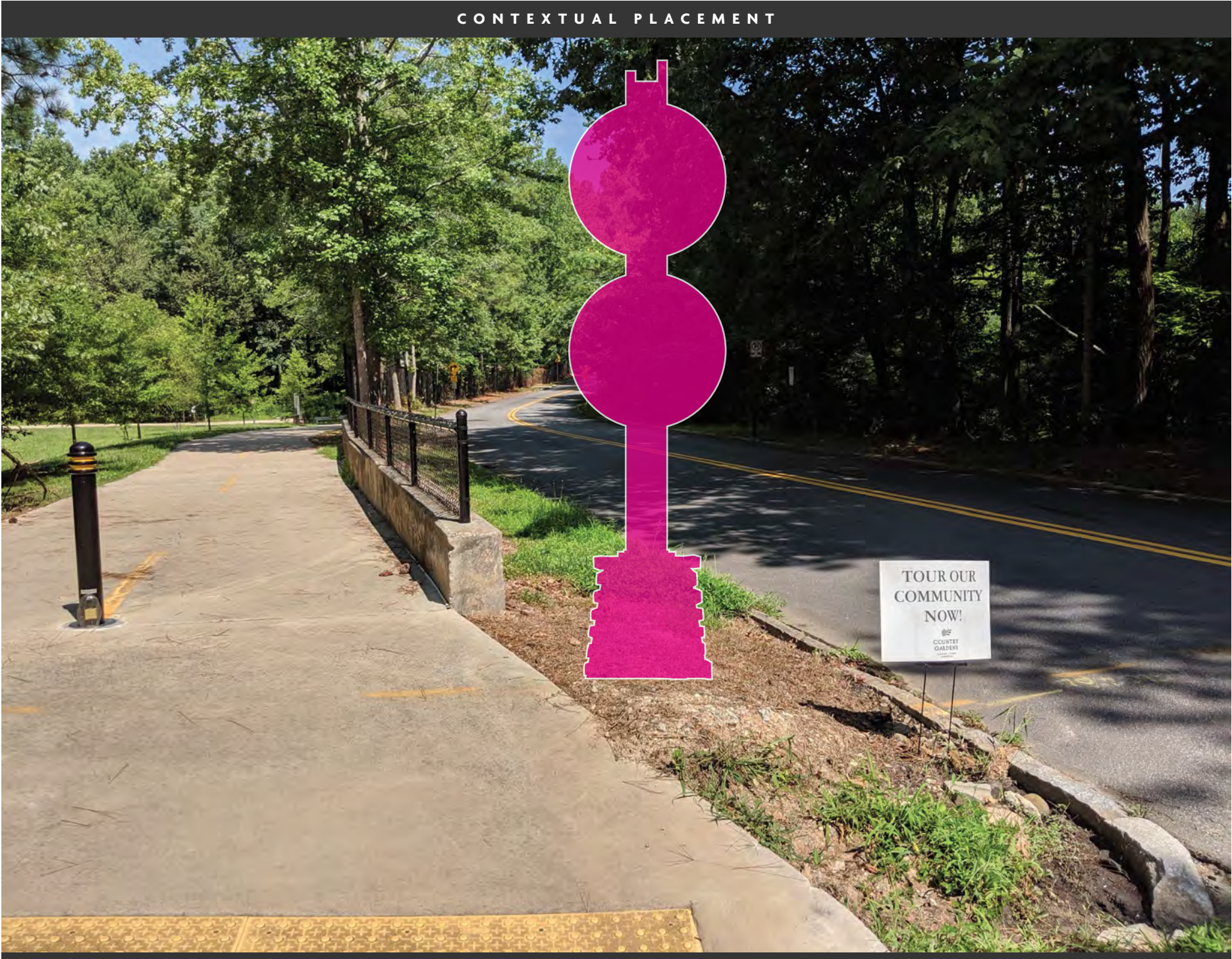
4664 N Peachtree Rd, Dunwoody, GA 30338



2 SATELLITE REFERENCE IMAGE  
SCALE: NTS



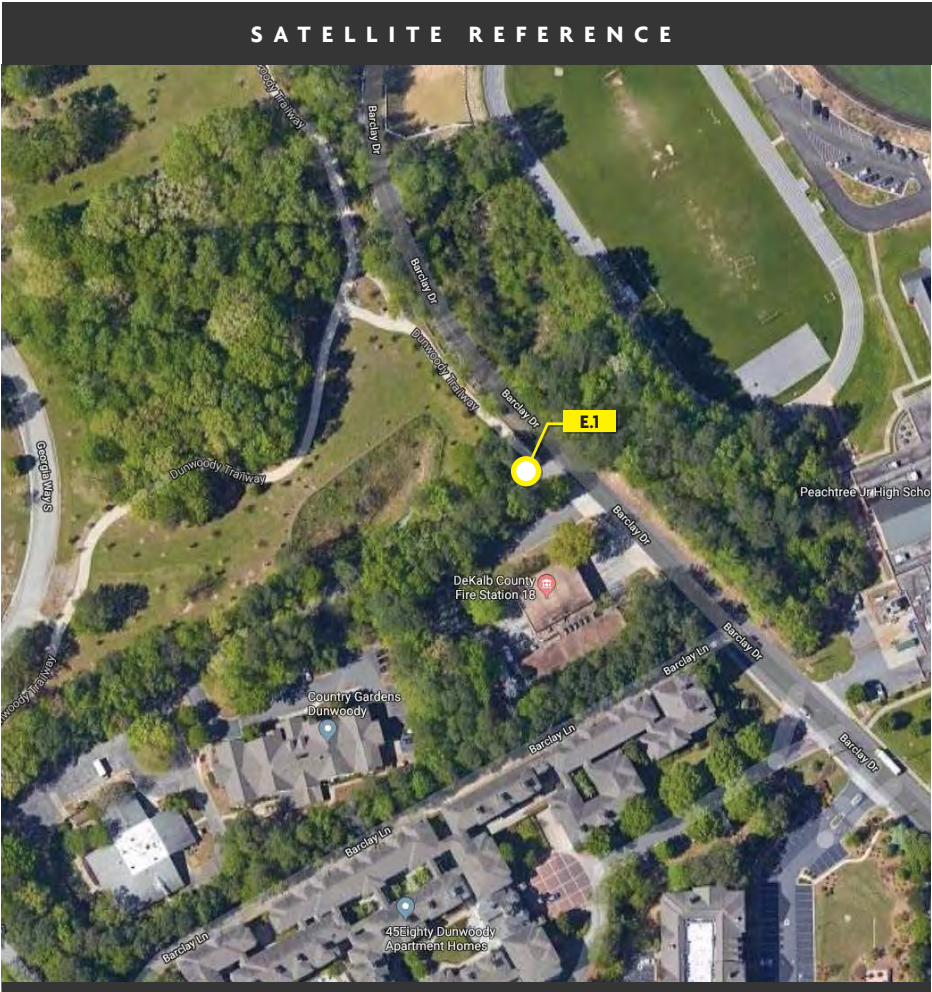
BELOW SCHEMATIC IMAGE SHOWN FOR  
REFERENCE ONLY. REFER TO DRAWING SET FOR  
DETAILS, SPECS, MEASUREMENTS, ETC.



1 CONTEXTUAL PLACEMENT IMAGE  
SCALE: NTS

# BROOK RUN PARK

4598 Barclay Dr, Dunwoody, GA 30338



2 SATELLITE REFERENCE IMAGE  
SCALE: NTS



BELOW SCHEMATIC IMAGE SHOWN FOR  
REFERENCE ONLY. REFER TO DRAWING SET FOR  
DETAILS, SPECS, MEASUREMENTS, ETC.

# WINDWOOD HOLLOW PARK

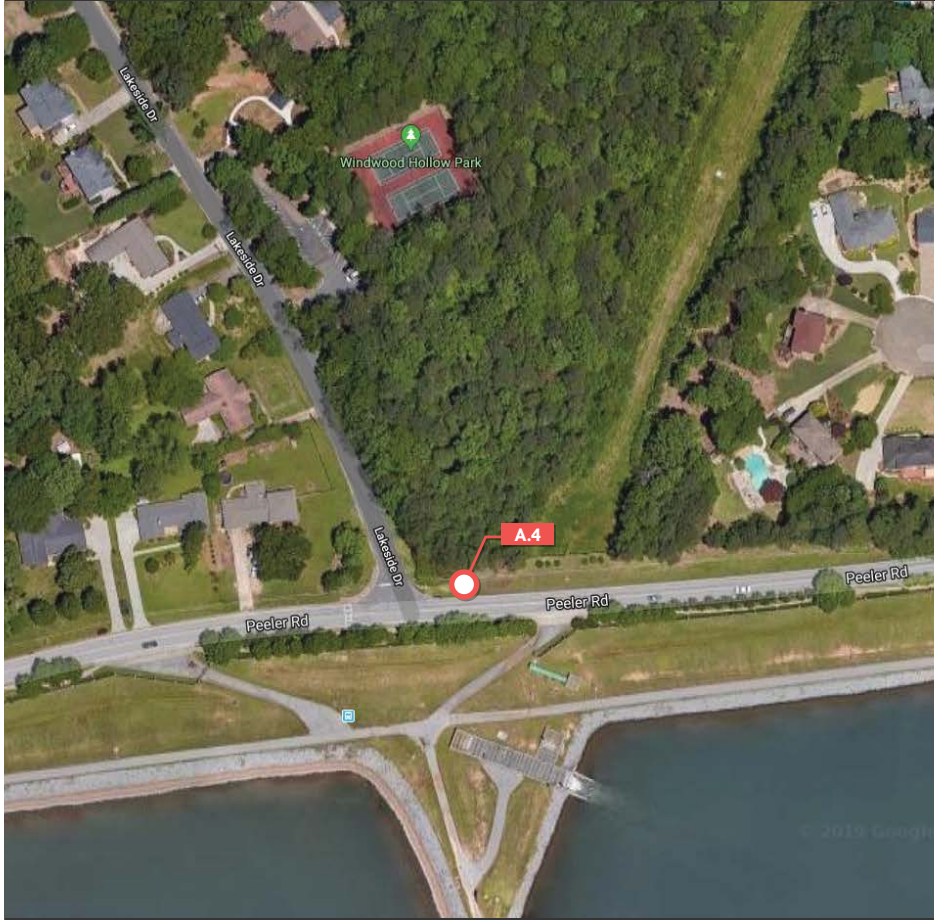
4865 Lakeside Dr, Dunwoody, GA 30360

## CONTEXTUAL PLACEMENT



1	CONTEXTUAL PLACEMENT IMAGE
SCALE: NTS	

## SATELLITE REFERENCE



2	SATELLITE REFERENCE IMAGE
---	---------------------------

SCALE: NTS

55 IVAN ALLEN JR. BLVD, SUITE 100 ATLANTA, GA 30308 P: 404.688.4702 F: 404.688.2255 W: SKYDESIGNGRAPHICS.COM

PROJECT #: 31538.00

TITLE: City of Dunwoody  
Park Signage

SIGN TYPE: Sign Location Plan

REV.#:	DATE:	DRAWN BY:
# 0	12.02.2019	CW/TC



BELOW SCHEMATIC IMAGE SHOWN FOR  
REFERENCE ONLY. REFER TO DRAWING SET FOR  
DETAILS, SPECS, MEASUREMENTS, ETC.

# WINDWOOD HOLLOW PARK

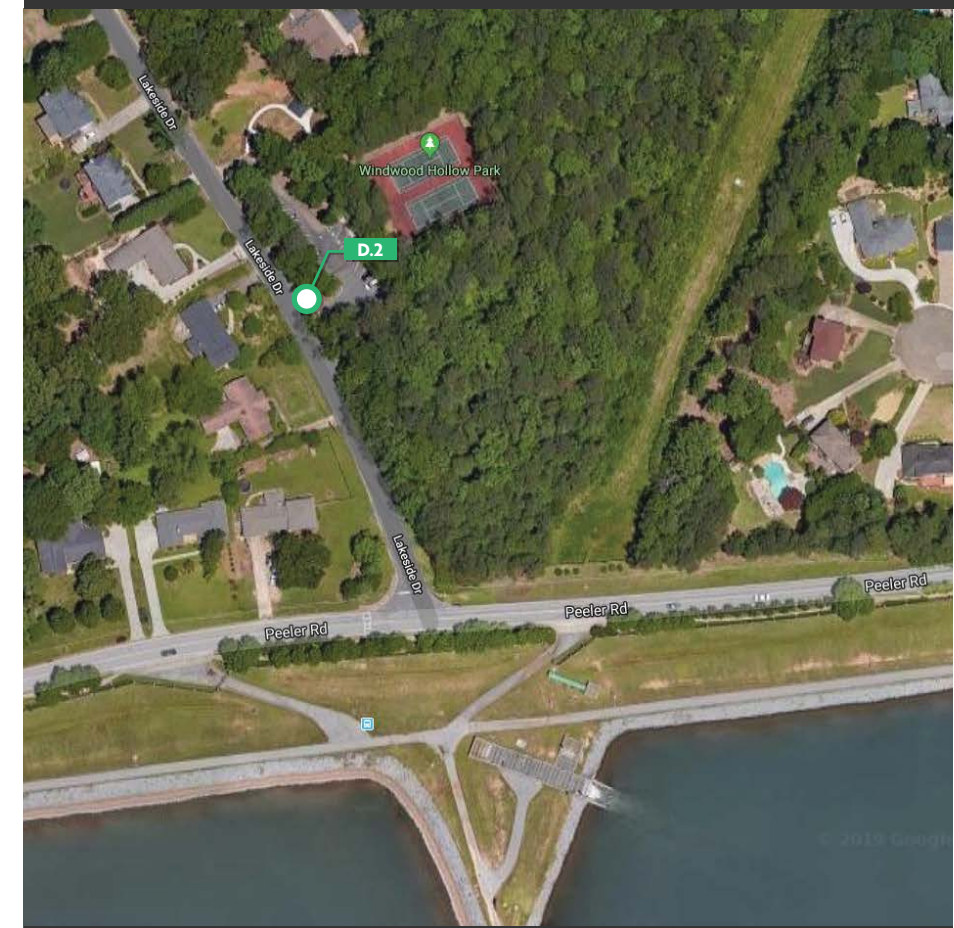
4865 Lakeside Dr, Dunwoody, GA 30360

## CONTEXTUAL PLACEMENT



1 CONTEXTUAL PLACEMENT IMAGE  
SCALE: NTS

## SATELLITE REFERENCE



2 SATELLITE REFERENCE IMAGE  
SCALE: NTS

55 IVAN ALLEN JR. BLVD, SUITE 100 ATLANTA, GA 30308 P: 404.688.4702 F: 404.688.2255 W: SKYDESIGNGRAPHICS.COM

PROJECT #: 31538.00

TITLE: City of Dunwoody  
Park Signage

SIGN TYPE: Sign Location Plan

REV.#:      DATE:      DRAWN BY:  
# 0      12.02.2019      CW/TC

Packet page:... 0.10

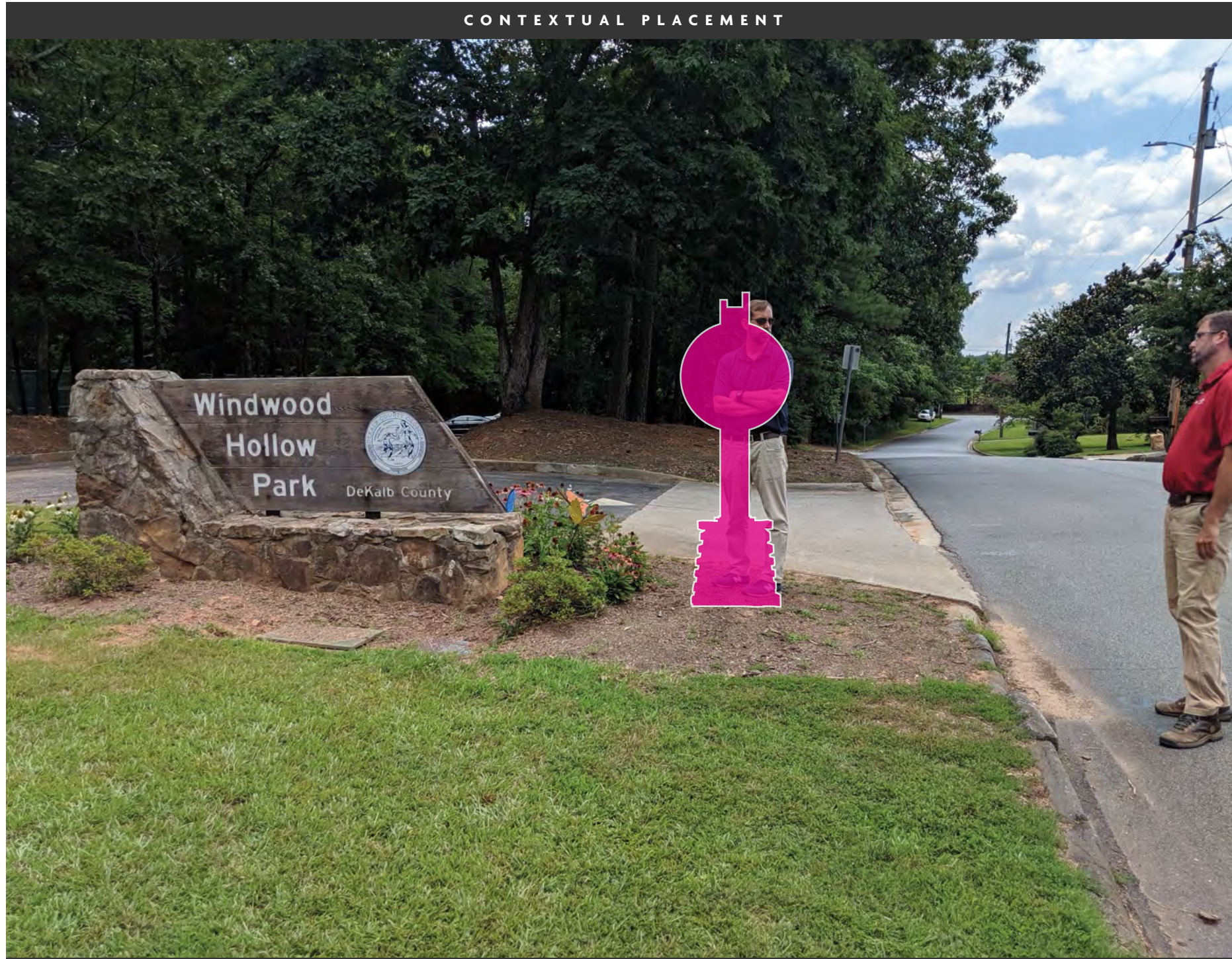


BELOW SCHEMATIC IMAGE SHOWN FOR  
REFERENCE ONLY. REFER TO DRAWING SET FOR  
DETAILS, SPECS, MEASUREMENTS, ETC.

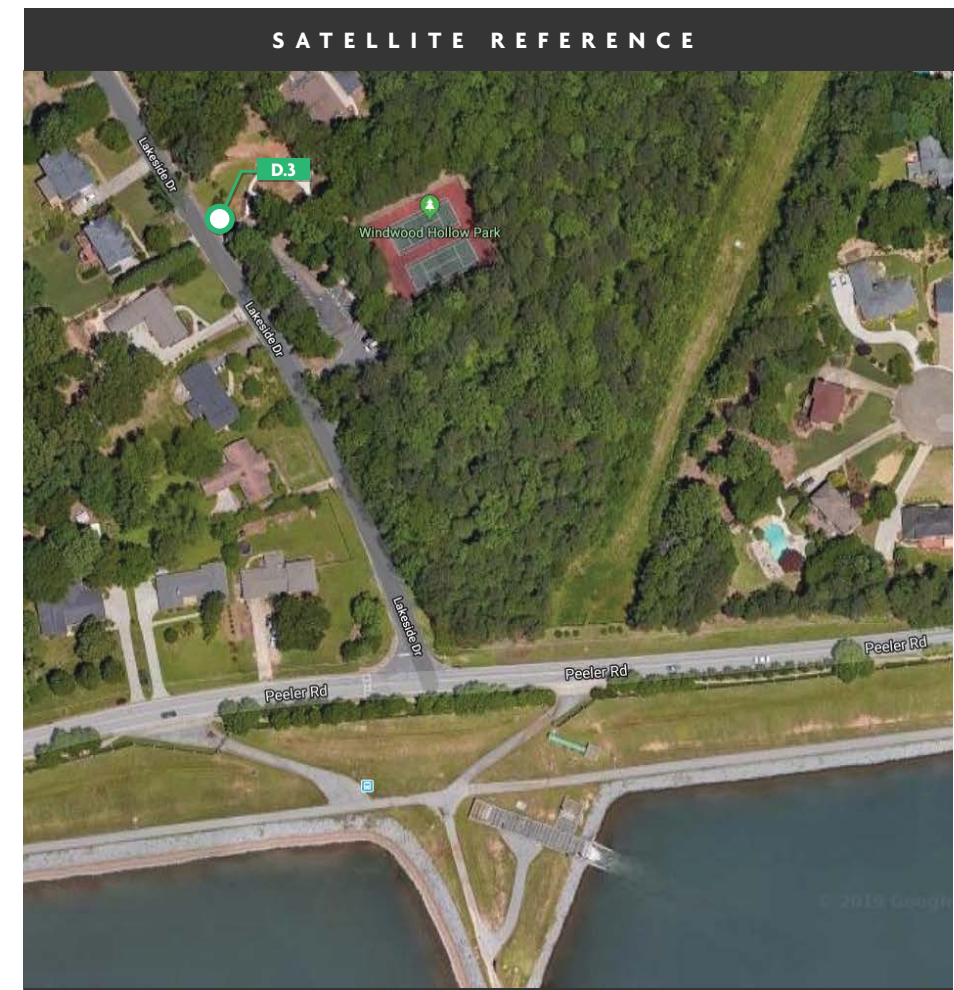
# WINDWOOD HOLLOW PARK

4865 Lakeside Dr, Dunwoody, GA 30360

## CONTEXTUAL PLACEMENT



## SATELLITE REFERENCE



1 CONTEXTUAL PLACEMENT IMAGE  
SCALE: NTS

2 SATELLITE REFERENCE IMAGE  
SCALE: NTS



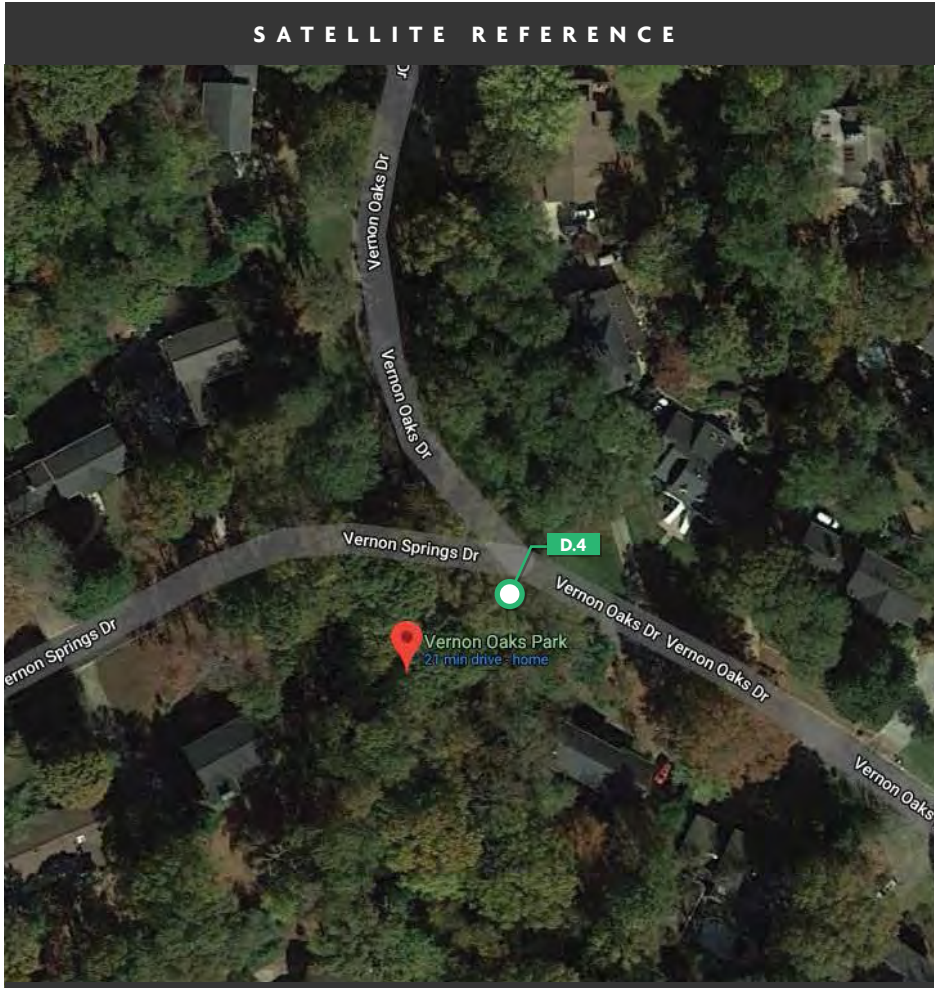
BELOW SCHEMATIC IMAGE SHOWN FOR  
REFERENCE ONLY. REFER TO DRAWING SET FOR  
DETAILS, SPECS, MEASUREMENTS, ETC.



1	CONTEXTUAL PLACEMENT IMAGE
SCALE: NTS	

# VERNON OAKS PARK

Vernon Oaks Dr & Vernon Springs Dr, Dunwoody, GA 30338



2	SATELLITE REFERENCE IMAGE
---	---------------------------

SCALE: NTS



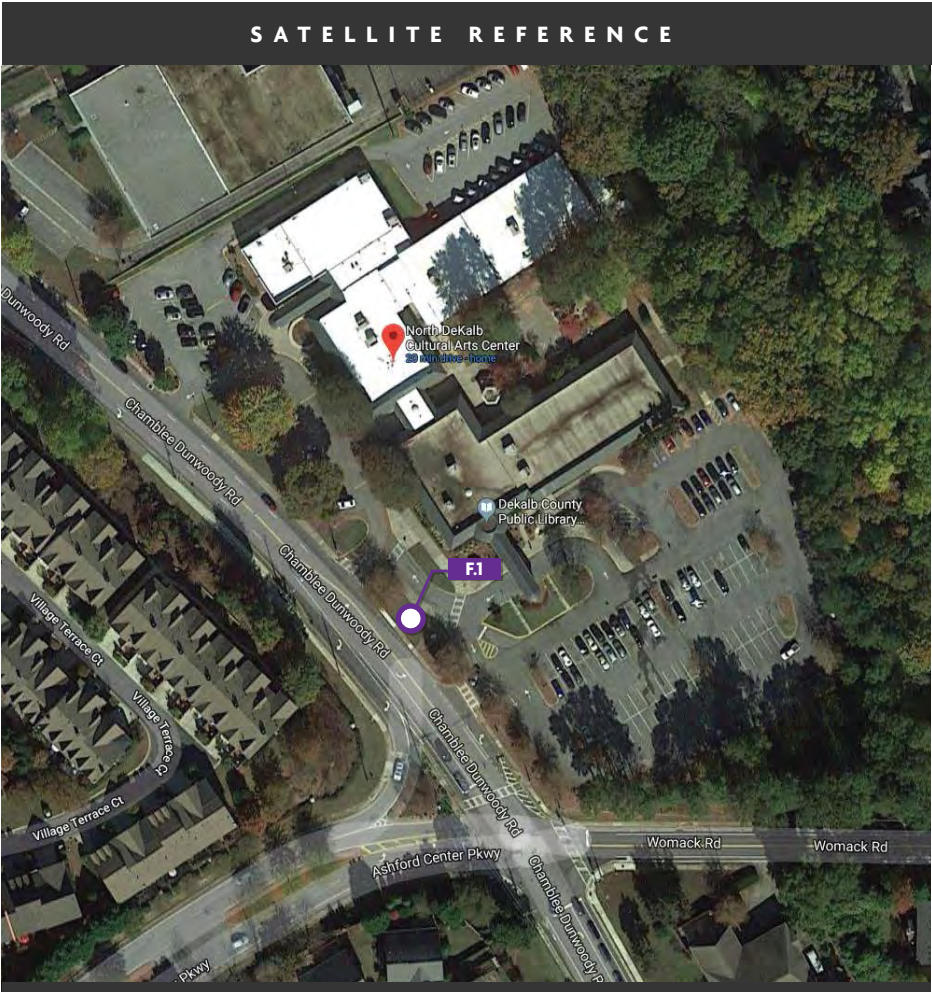
BELOW SCHEMATIC IMAGE SHOWN FOR  
REFERENCE ONLY. REFER TO DRAWING SET FOR  
DETAILS, SPECS, MEASUREMENTS, ETC.

# DUNWOODY CULTURAL ARTS CENTER

5339 Chamblee Dunwoody Rd, Atlanta, GA 30338



1 CONTEXTUAL PLACEMENT IMAGE  
SCALE: NTS



2 SATELLITE REFERENCE IMAGE  
SCALE: NTS

55 IVAN ALLEN JR. BLVD, SUITE 100 ATLANTA, GA 30308 P: 404.688.4702 F: 404.688.2255 W: SKYDESIGNGRAPHICS.COM

PROJECT #: 31538.00

TITLE: City of Dunwoody  
Park Signage

SIGN TYPE: Sign Location Plan

REV.#: DATE: DRAWN BY:

# 0 12.02.2019 CW/TC

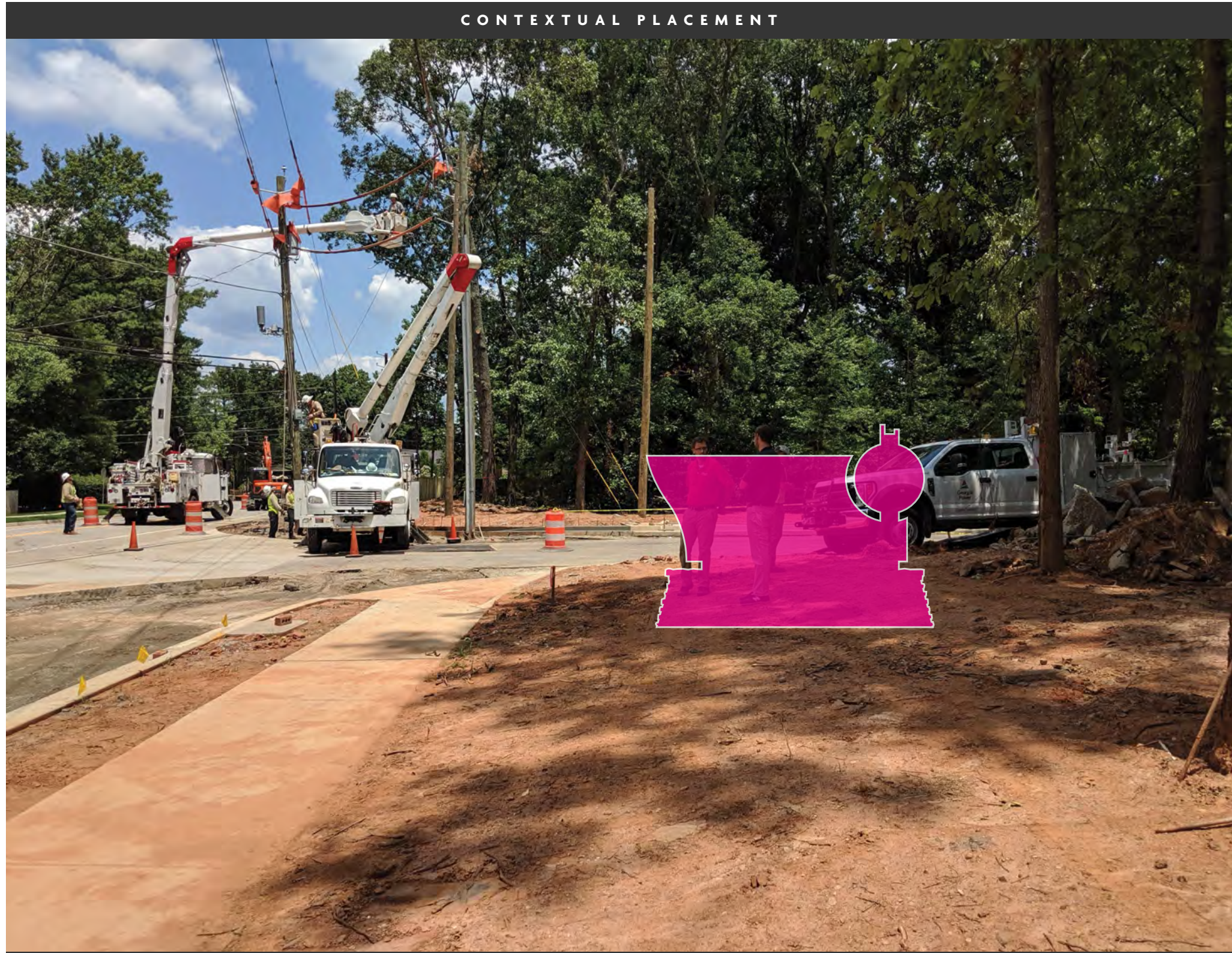


BELOW SCHEMATIC IMAGE SHOWN FOR  
REFERENCE ONLY. REFER TO DRAWING SET FOR  
DETAILS, SPECS, MEASUREMENTS, ETC.

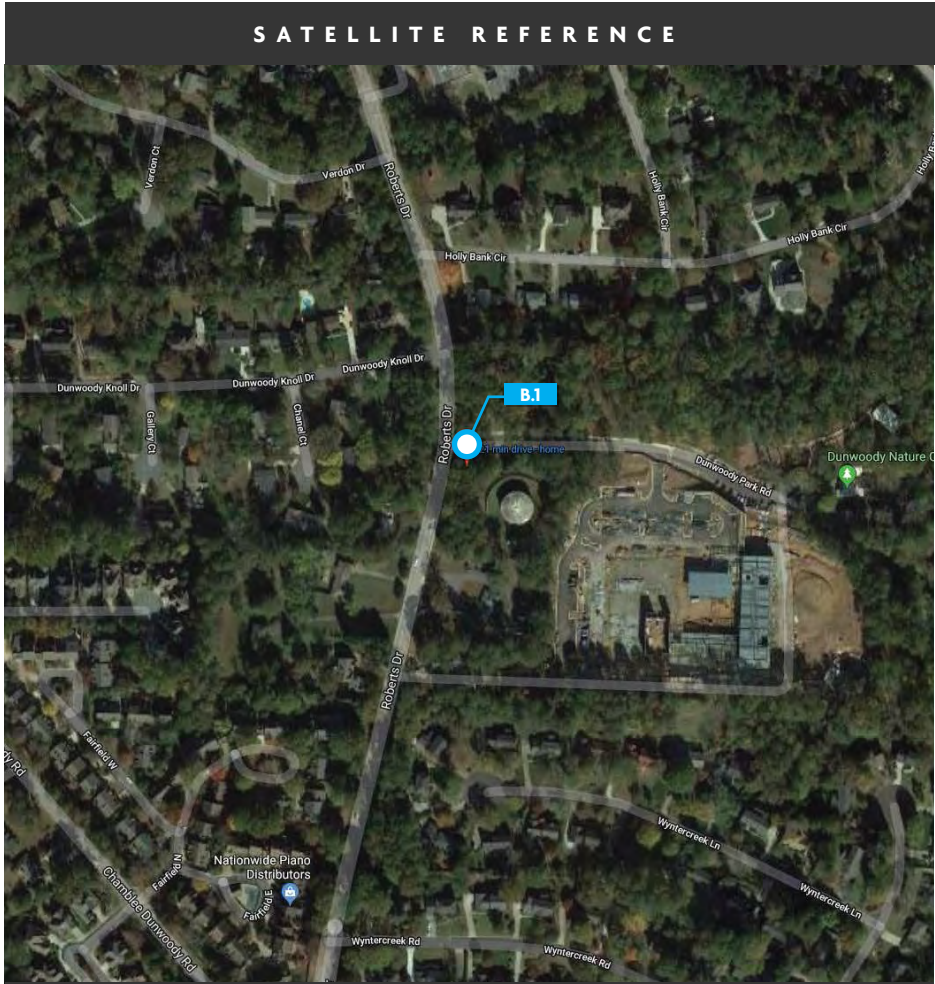
# DUNWOODY PARK & NATURE CENTER

5343 Roberts Dr, Dunwoody, GA 30338

## CONTEXTUAL PLACEMENT



## SATELLITE REFERENCE

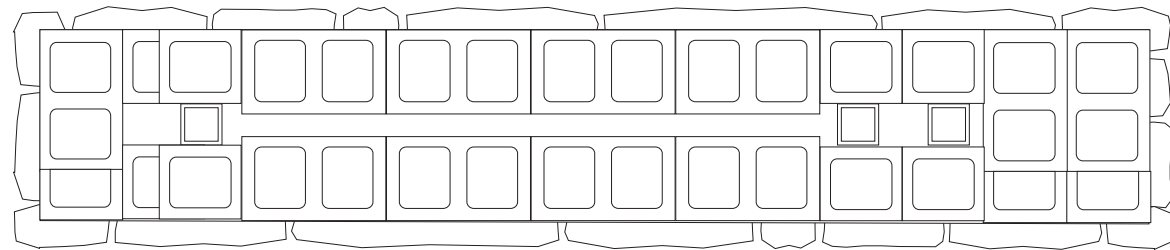


1 CONTEXTUAL PLACEMENT IMAGE  
SCALE: NTS

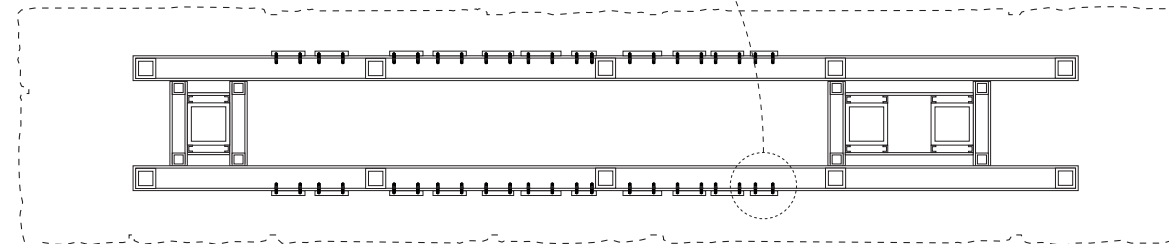
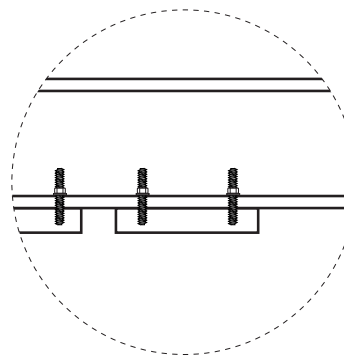
2 SATELLITE REFERENCE IMAGE  
SCALE: NTS



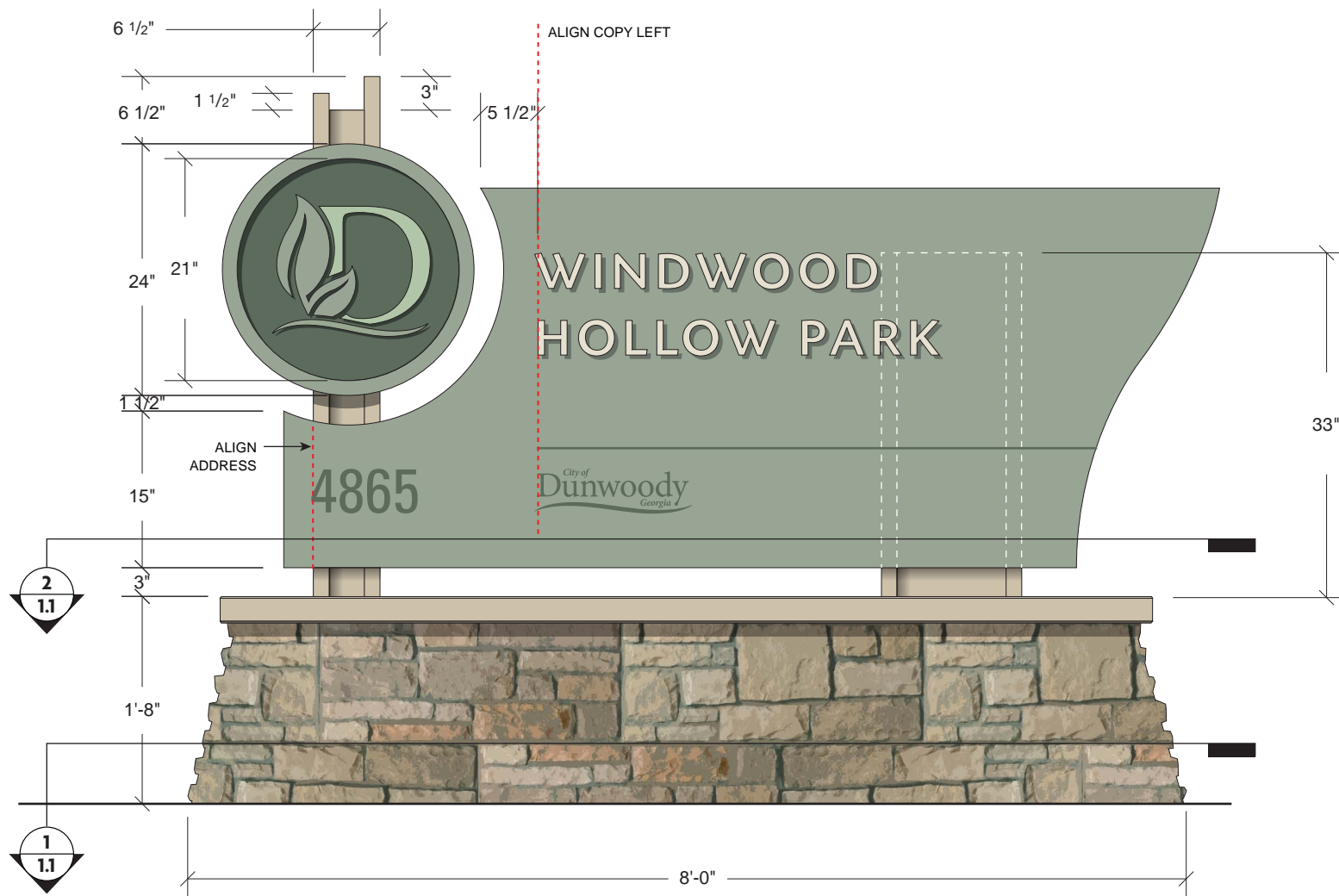




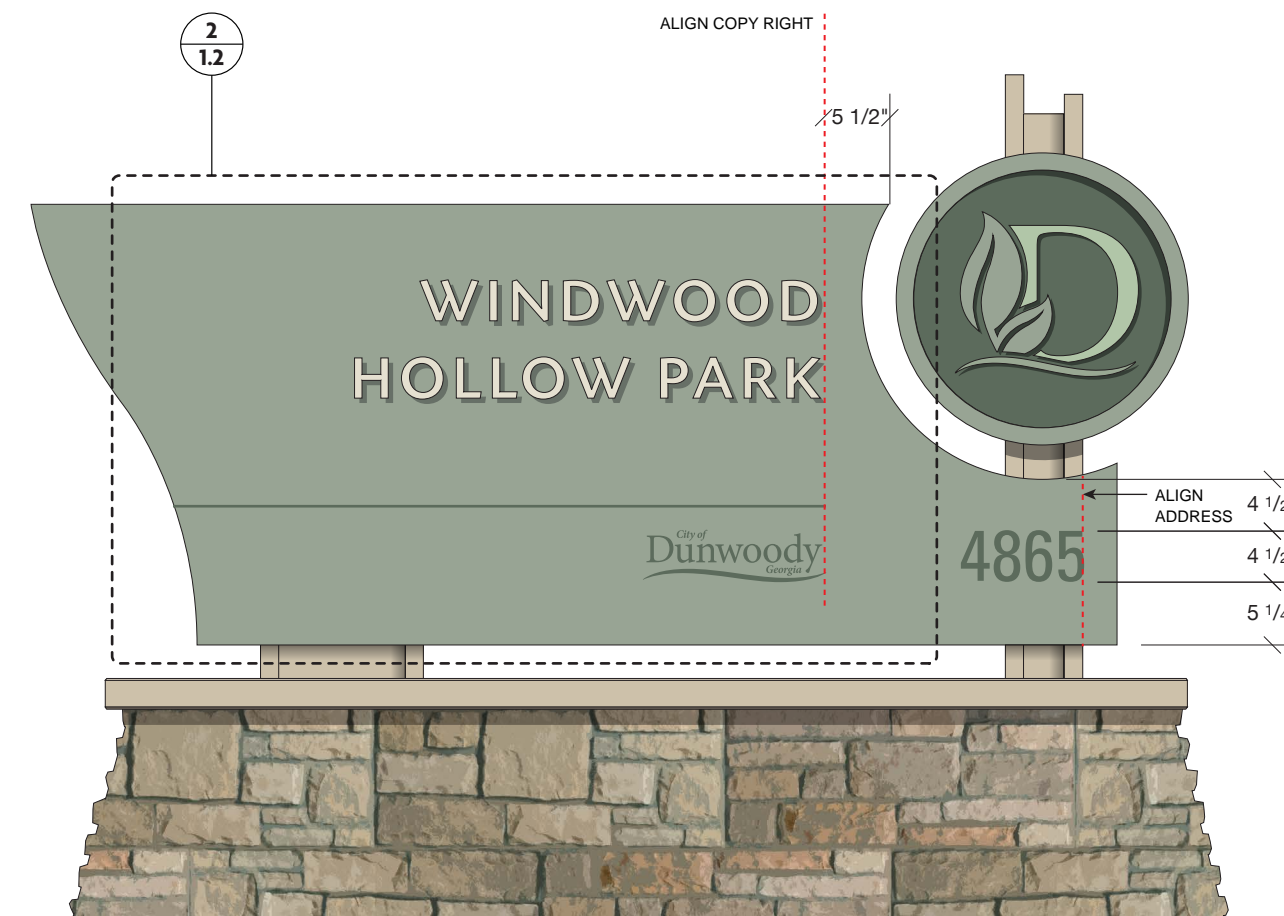
1 SECTION VIEW  
SCALE: 3/4" = 1'-0"



2 SECTION VIEW  
SCALE: 3/4" = 1'-0"



3 FRONT ELEVATION  
SCALE: 3/4" = 1'-0"



4 BACK ELEVATION  
SCALE: 3/4" = 1'-0"







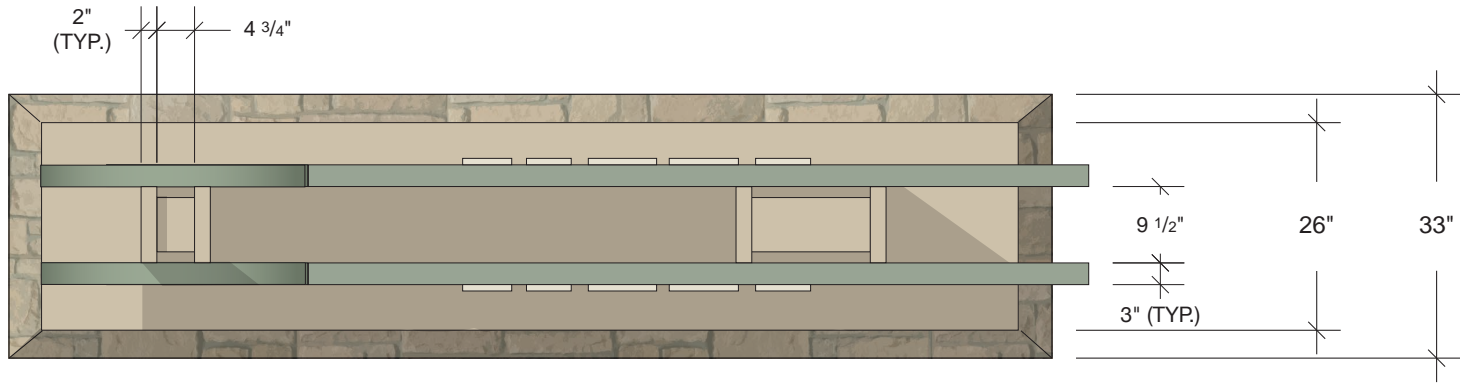


1 BACK ELEVATION  
SCALE: 3/4" = 1'-0"



2 INTERCHANGEABLE MAGNETIC PANELS  
SCALE: 3/4" = 1'-0"

PROJECT #: 31538.00		
TITLE: City of Dunwoody Park Signage		
SIGN TYPE: Park ID Type B		
REV.#:	DATE:	DRAWN BY:
# 0	12.02.2019	CW/TC



3 PLAN  
SCALE: 1/2" = 1'-0"

MATERIALS & SPECIFICATIONS

A - FABRICATED ALUMINUM POST (P4)

B - 2" DEEP FABRICATED ALUMINUM MEDALLION (P1, P2)

C - 1/2" THICK WATERJET CUT ALUMINUM LEAF (P1)

D - 1/2" THICK WATERJET CUT ALUMINUM COPY, MECHANICALLY FASTENED FROM BACK SIDE (P3)

E - SCREEN PRINTED COPY (P2)

F - PRECAST STONE CAP (M4)

G - CMU BASE CLAD WITH STONE VENEER (M1)

INSTALL:

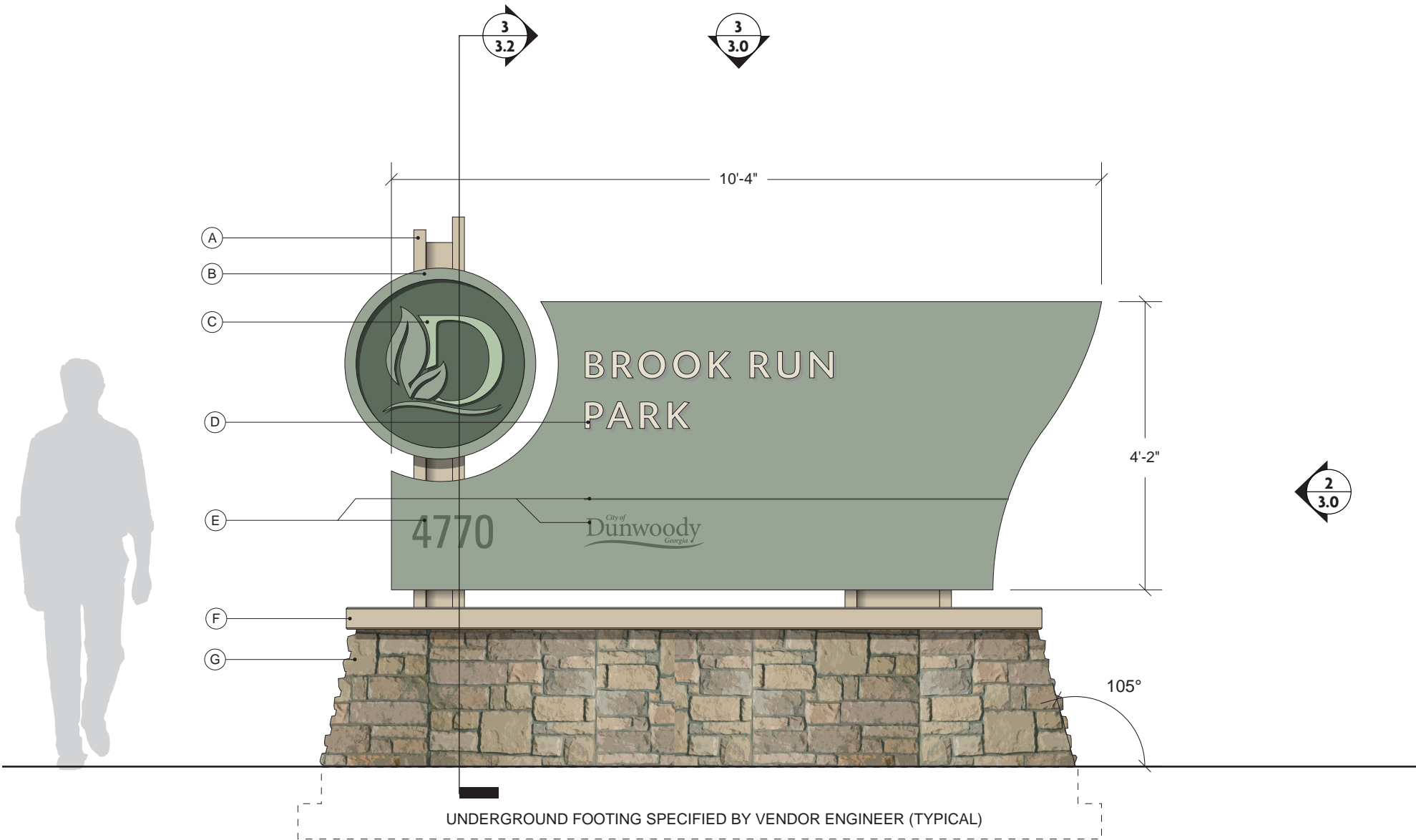
- FINAL LOCATION AND ORIENTATION IS TBD

- BACKFILL AS REQUIRED

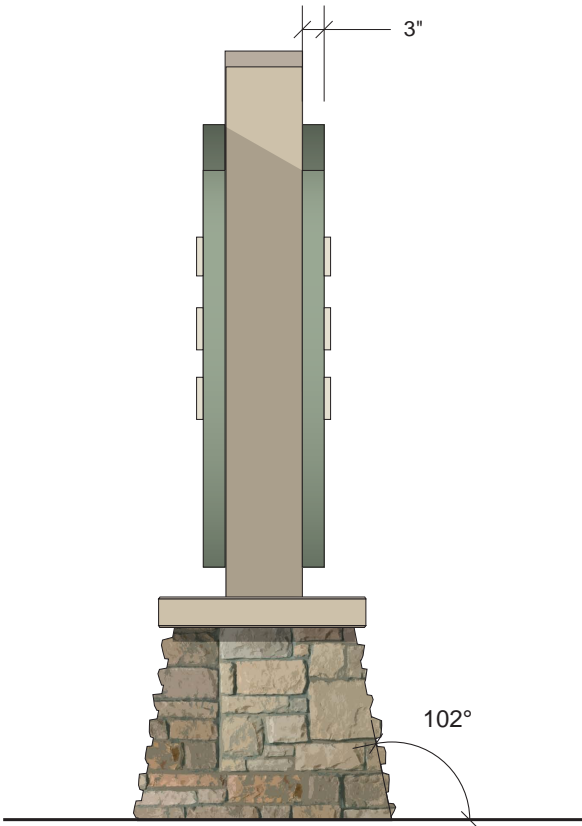
- ALL STRUCTURAL COMPONENTS TO BE VERIFIED BY ENGINEER

NOTES:

- ALL LOCATIONS WILL REQUIRE ADDITIONAL REVIEW TO DETERMINE EXACT ORIENTATION AND PLACEMENT.



1 FRONT ELEVATION  
SCALE: 1/2" = 1'-0"



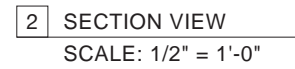
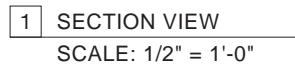
2 SIDE ELEVATION  
SCALE: 1/2" = 1'-0"

PROJECT #: 31538.00

TITLE: City of Dunwoody  
Park Signage

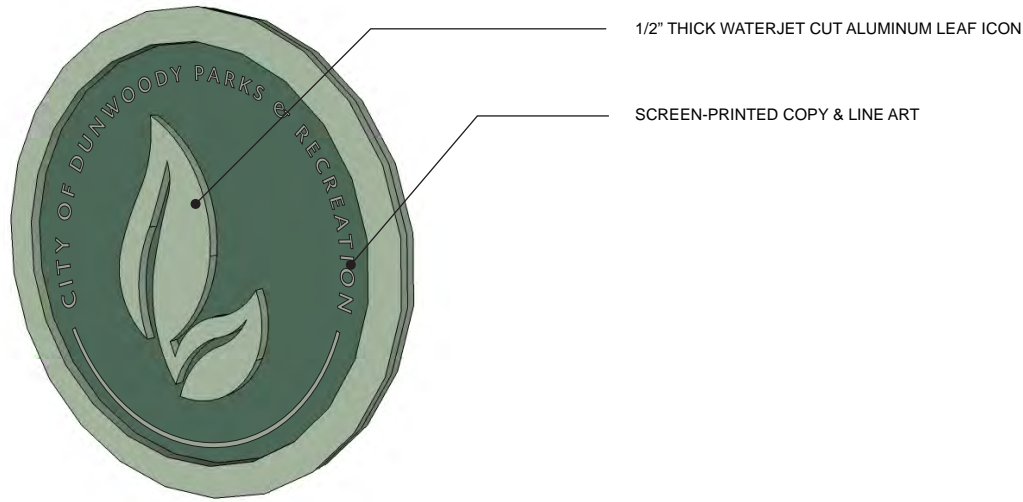
SIGN TYPE: Park ID Type C

REV.#: DATE: DRAWN BY:  
# 0 12.02.2019 CW/TC



VERTICAL SEAMS IN STONE  
IS NOT THE DESIRED DESIGN INTENT  
AND WILL BE REJECTED.  
VISUALLY SHOWN AS PATTERN  
TEXTURE ONLY.

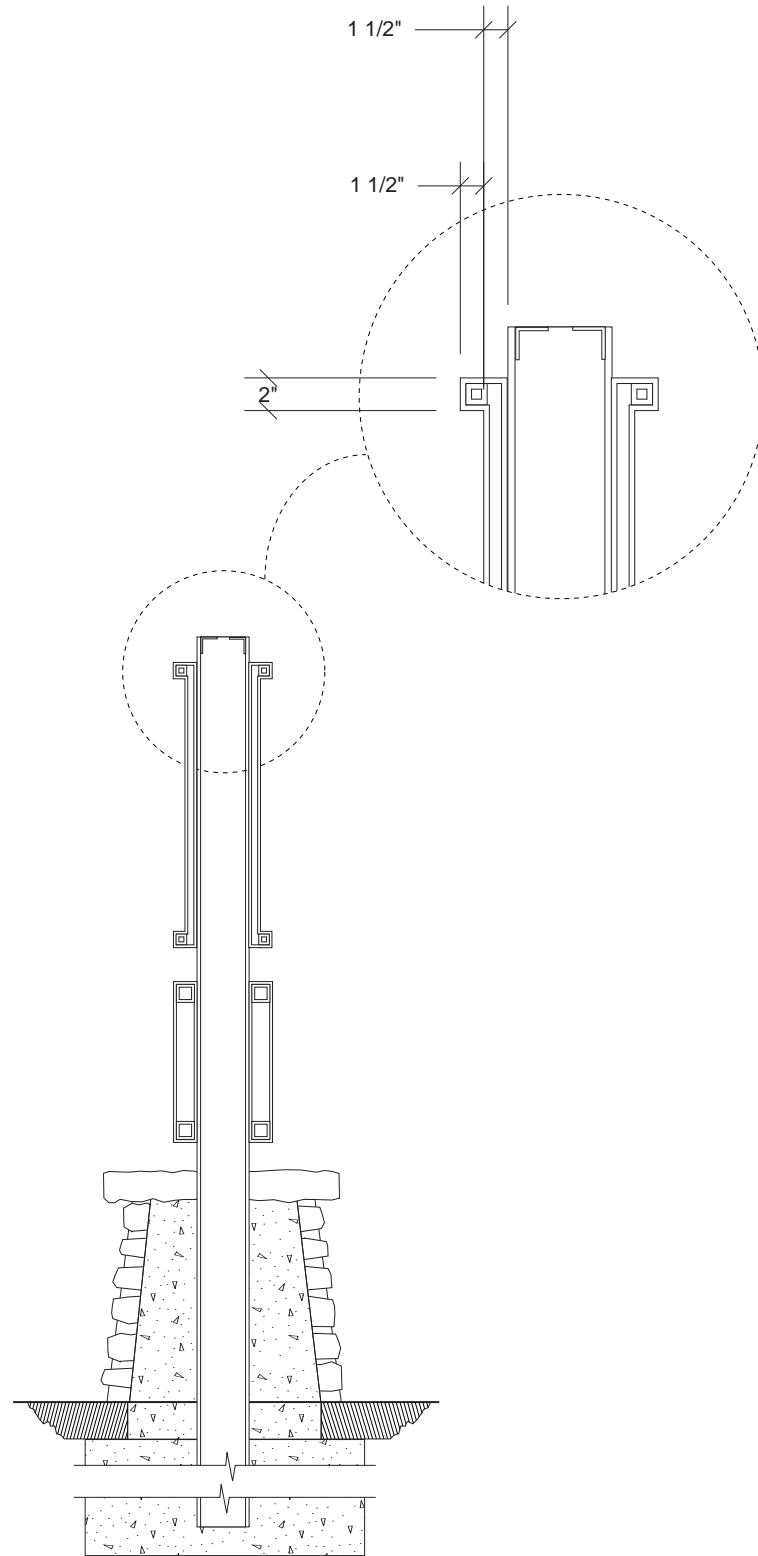
3 FRONT ELEVATION  
SCALE: 1/2" = 1'-0"



2 MEDALLION DETAIL  
SCALE: NTS

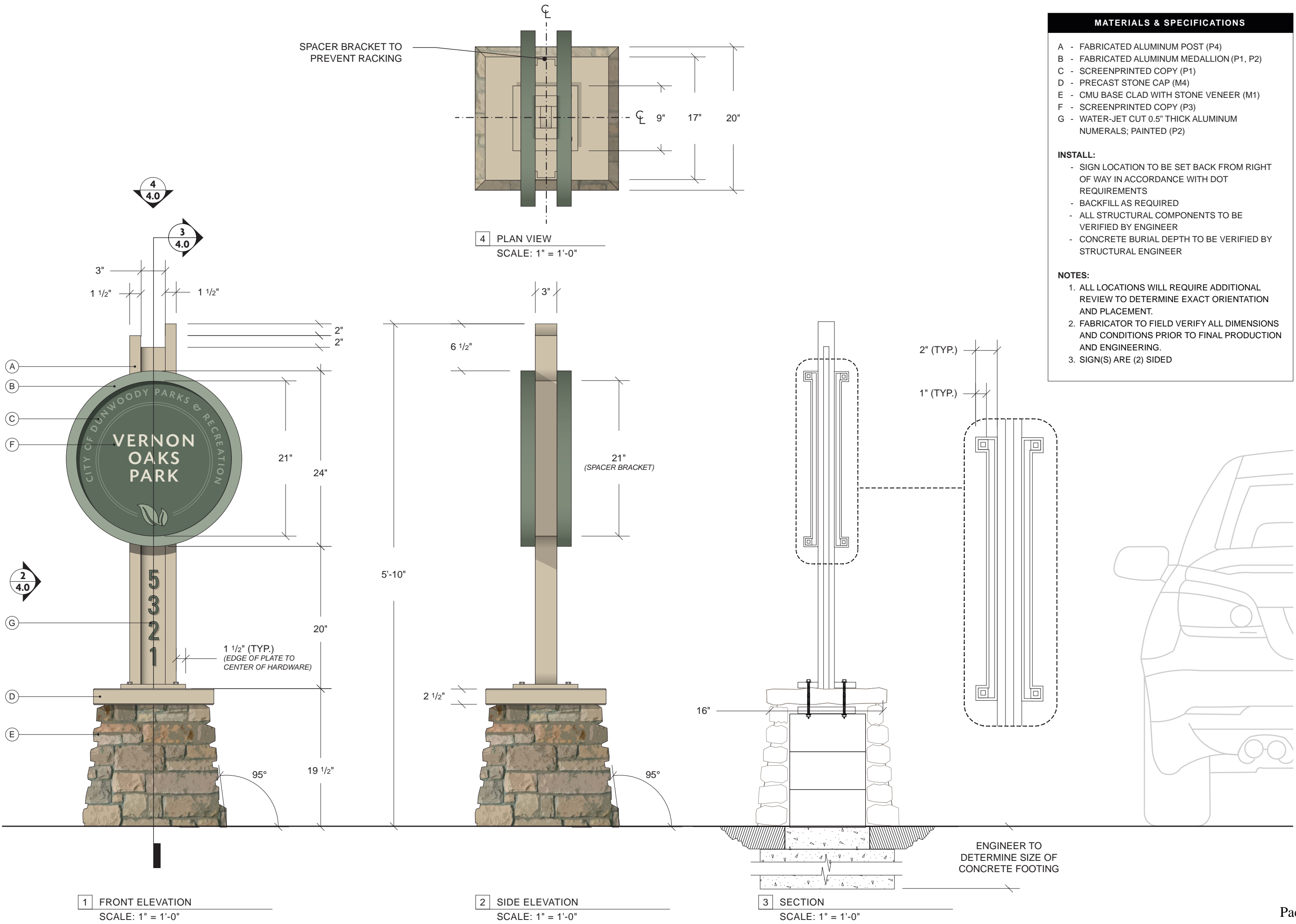


1 BACK ELEVATION  
SCALE: 1/2" = 1'-0"

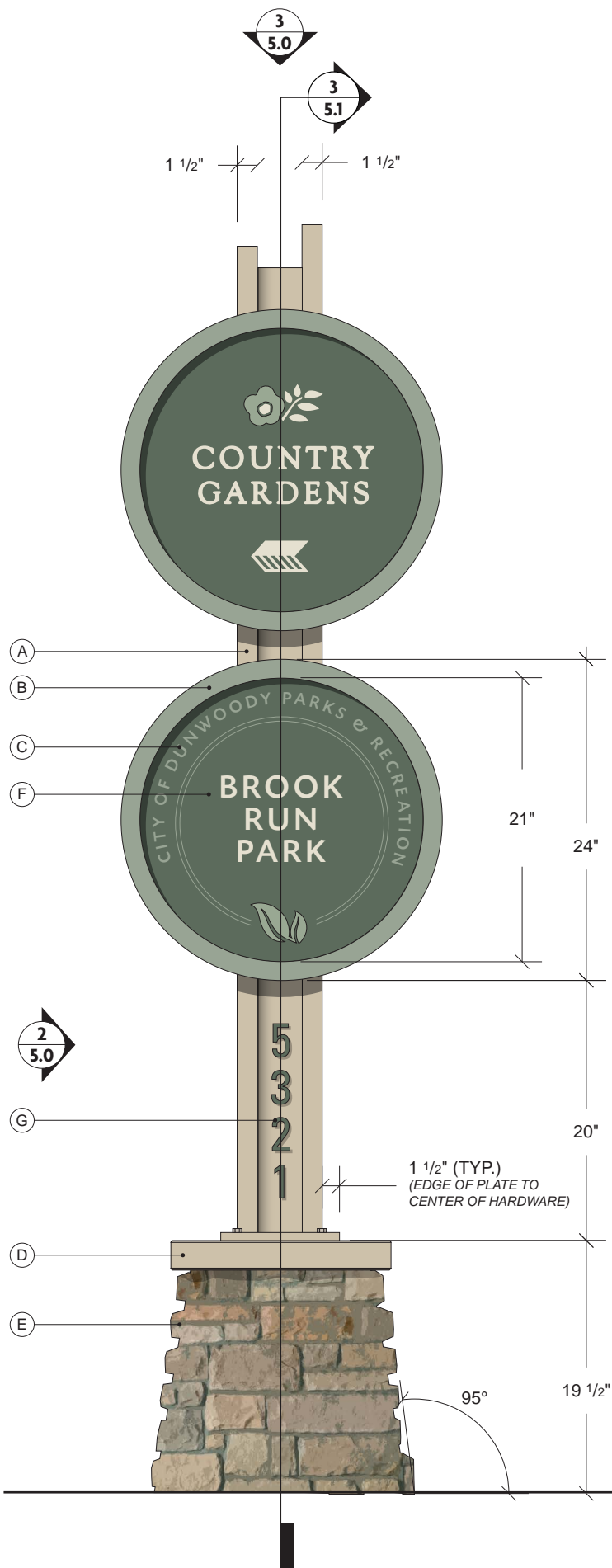


3 SECTION VIEW  
SCALE: 1/2" = 1'-0"

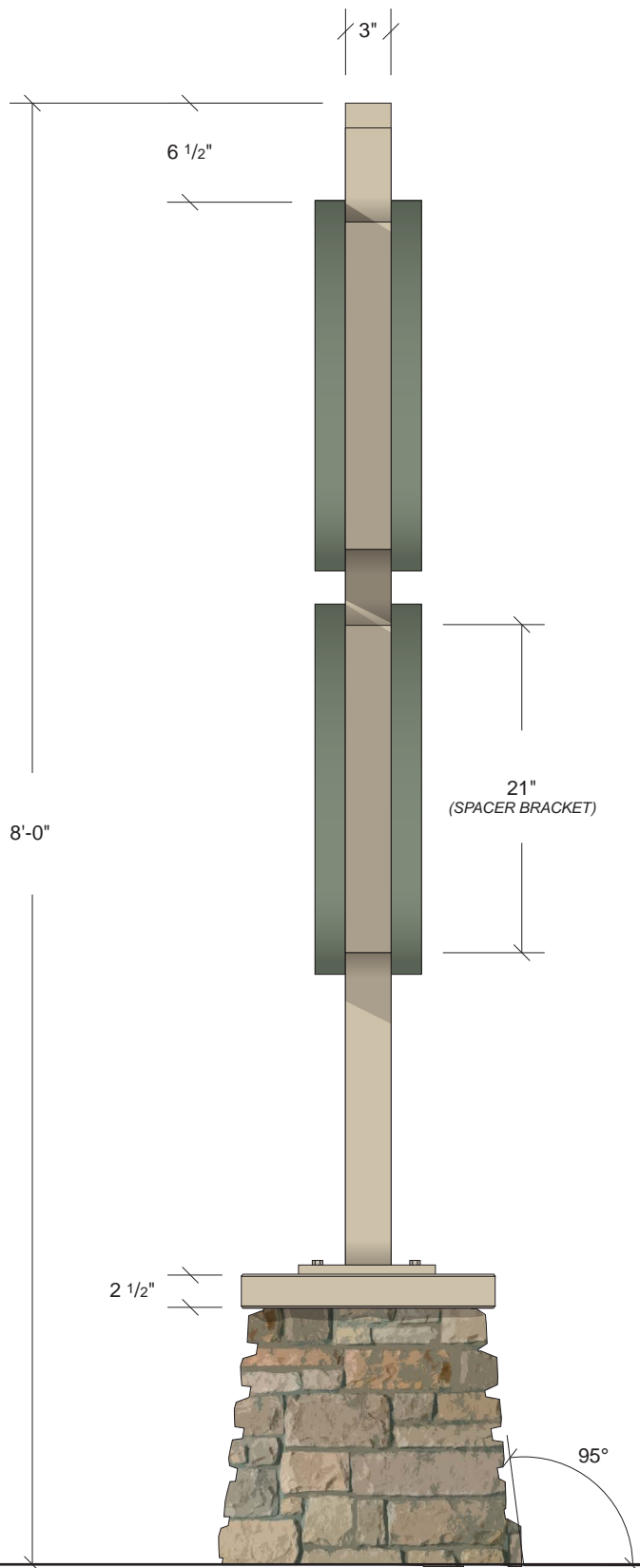




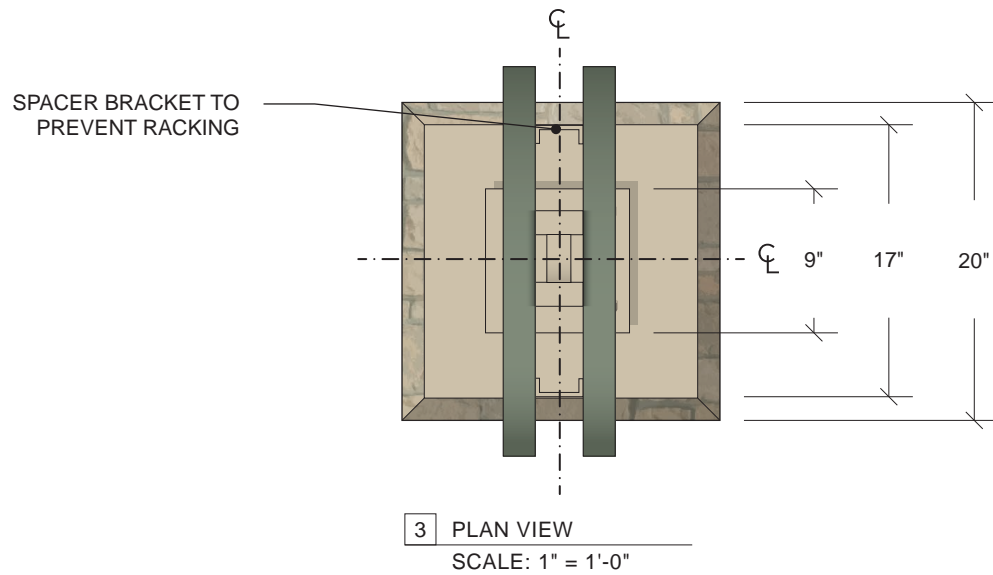
MATERIALS & SPECIFICATIONS	
A	- FABRICATED ALUMINUM POST (P4)
B	- FABRICATED ALUMINUM MEDALLION (P1, P2)
C	- SCREENPRINTED COPY (P1)
D	- PRECAST STONE CAP (M4)
E	- CMU BASE CLAD WITH STONE VENEER (M1)
F	- SCREENPRINTED COPY (P3)
G	- WATER-JET CUT 0.5" THICK ALUMINUM NUMERALS; PAINTED (P2)
INSTALL:	
- SIGN LOCATION TO BE SET BACK FROM RIGHT OF WAY IN ACCORDANCE WITH DOT REQUIREMENTS	
- BACKFILL AS REQUIRED	
- ALL STRUCTURAL COMPONENTS TO BE VERIFIED BY ENGINEER	
- CONCRETE BURIAL DEPTH TO BE VERIFIED BY STRUCTURAL ENGINEER	
NOTES:	
1. ALL LOCATIONS WILL REQUIRE ADDITIONAL REVIEW TO DETERMINE EXACT ORIENTATION AND PLACEMENT.	
2. FABRICATOR TO FIELD VERIFY ALL DIMENSIONS AND CONDITIONS PRIOR TO FINAL PRODUCTION AND ENGINEERING.	
3. SIGN(S) ARE (2) SIDED	



1 FRONT ELEVATION  
SCALE: 1" = 1'-0"



2 SIDE ELEVATION  
SCALE: 1" = 1'-0"



3 PLAN VIEW

SCALE: 1" = 1'-0"

MATERIALS & SPECIFICATIONS

- A - FABRICATED ALUMINUM POST (P4)
- B - FABRICATED ALUMINUM MEDALLION (P1, P2)
- C - SCREENPRINTED COPY (P1)
- D - PRECAST STONE CAP (M4)
- E - CMU BASE CLAD WITH STONE VENEER (M1)
- F - SCREENPRINTED COPY (P3)
- G - WATER-JET CUT 0.5" THICK ALUMINUM NUMERALS; PAINTED (P2)

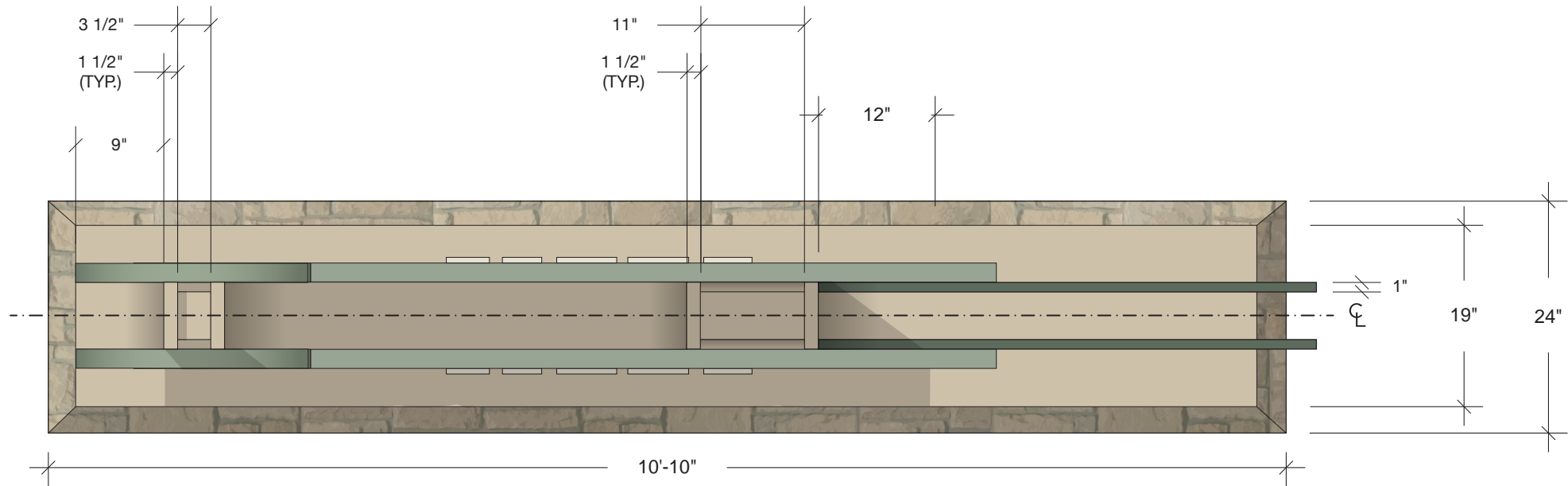
INSTALL:

- SIGN LOCATION TO BE SET BACK FROM RIGHT OF WAY IN ACCORDANCE WITH DOT REQUIREMENTS
- BACKFILL AS REQUIRED
- ALL STRUCTURAL COMPONENTS TO BE VERIFIED BY ENGINEER
- CONCRETE BURIAL DEPTH TO BE VERIFIED BY STRUCTURAL ENGINEER

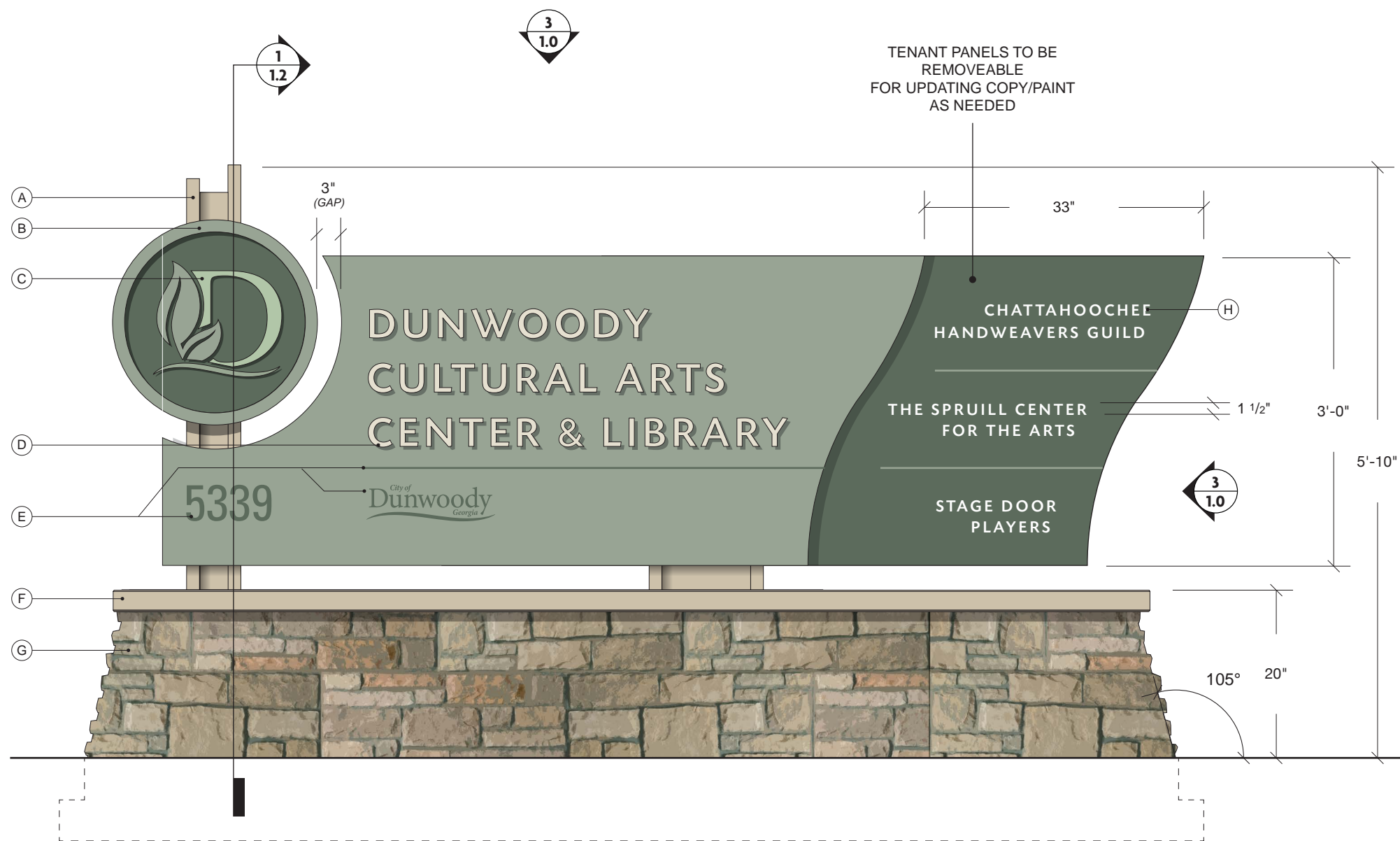
NOTES:

1. ALL LOCATIONS WILL REQUIRE ADDITIONAL REVIEW TO DETERMINE EXACT ORIENTATION AND PLACEMENT.
2. FABRICATOR TO FIELD VERIFY ALL DIMENSIONS AND CONDITIONS PRIOR TO FINAL PRODUCTION AND ENGINEERING.
3. SIGN(S) ARE (2) SIDED

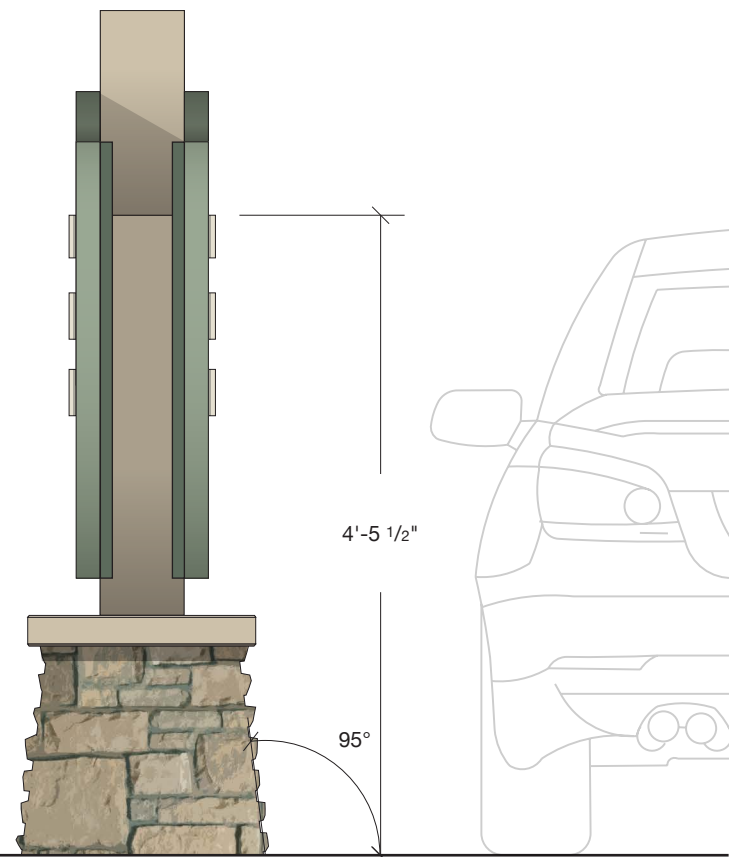




4 PLAN  
SCALE: 3/4" = 1'-0"



1 FRONT ELEVATION  
SCALE: 3/4" = 1'-0"



2 SIDE ELEVATION  
SCALE: 3/4" = 1'-0"

#### MATERIALS & SPECIFICATIONS

- A - FABRICATED ALUMINUM POST (P4)
- B - 2" DEEP FABRICATED ALUMINUM MEDALLION (P1, P2)
- C - 1/2" THICK WATERJET CUT ALUMINUM ICON (P1 & P5)
- D - 1/2" THICK WATERJET CUT ALUMINUM COPY, MECHANICALLY FASTENED FROM BACK SIDE (P3)
- E - SCREEN PRINTED COPY (P2)
- F - PRECAST STONE CAP (M4)
- G - CMU BASE CLAD WITH STONE VENEER (M1)
- H - APPLIED VINYL (V1)

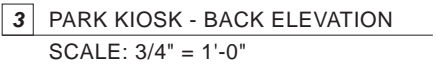
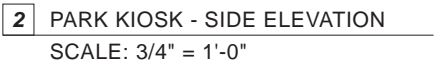
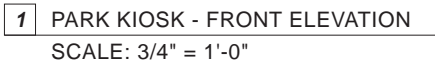
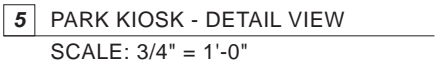
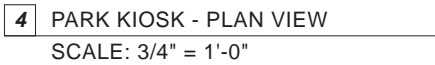
#### INSTALL:

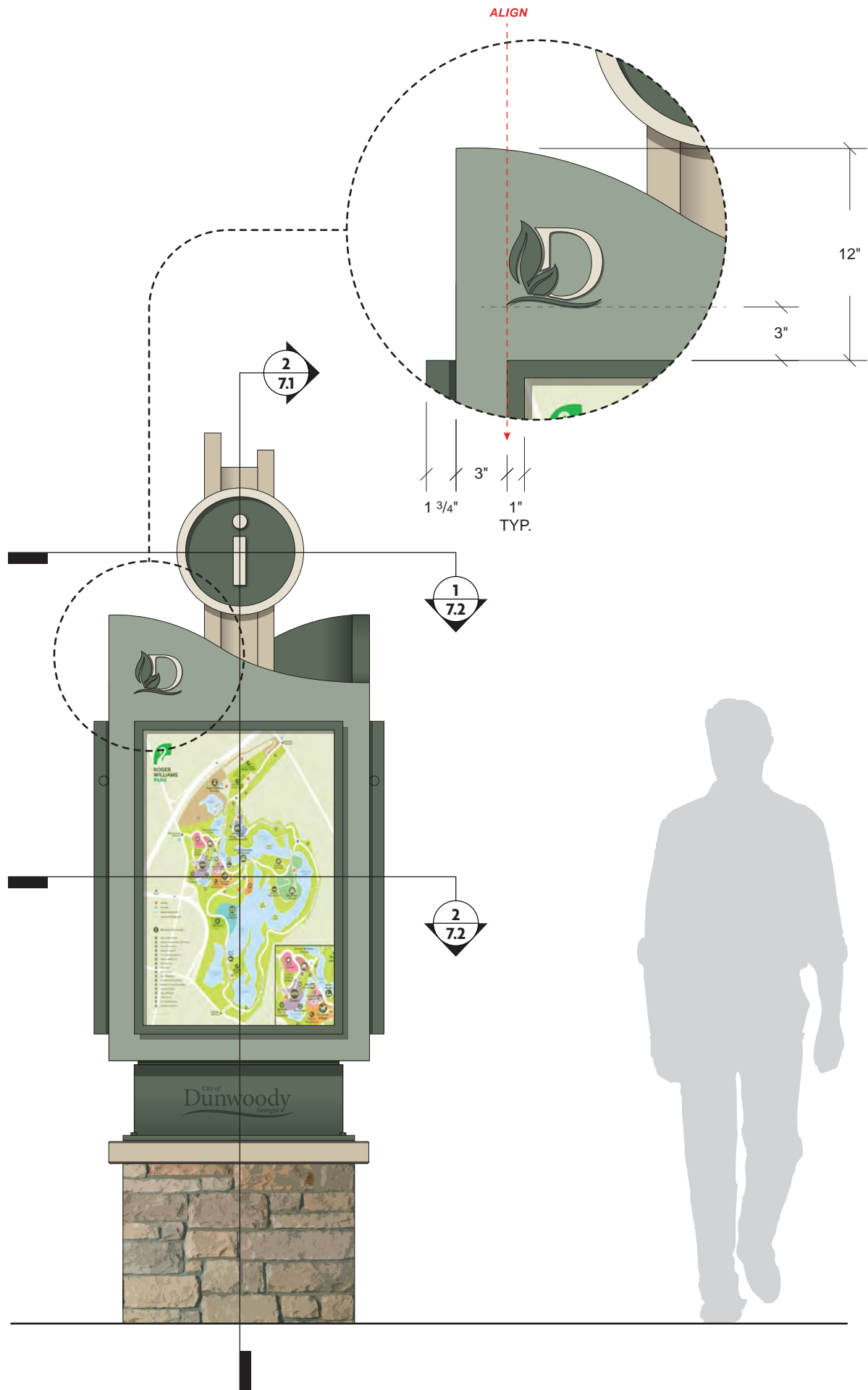
- SIGN LOCATION TO BE SET BACK FROM RIGHT OF WAY IN ACCORDANCE WITH DOT REQUIREMENTS
- BACKFILL AS REQUIRED
- ALL STRUCTURAL COMPONENTS TO BE VERIFIED BY ENGINEER
- CONCRETE BURIAL DEPTH TO BE VERIFIED BY STRUCTURAL ENGINEER

#### NOTES:

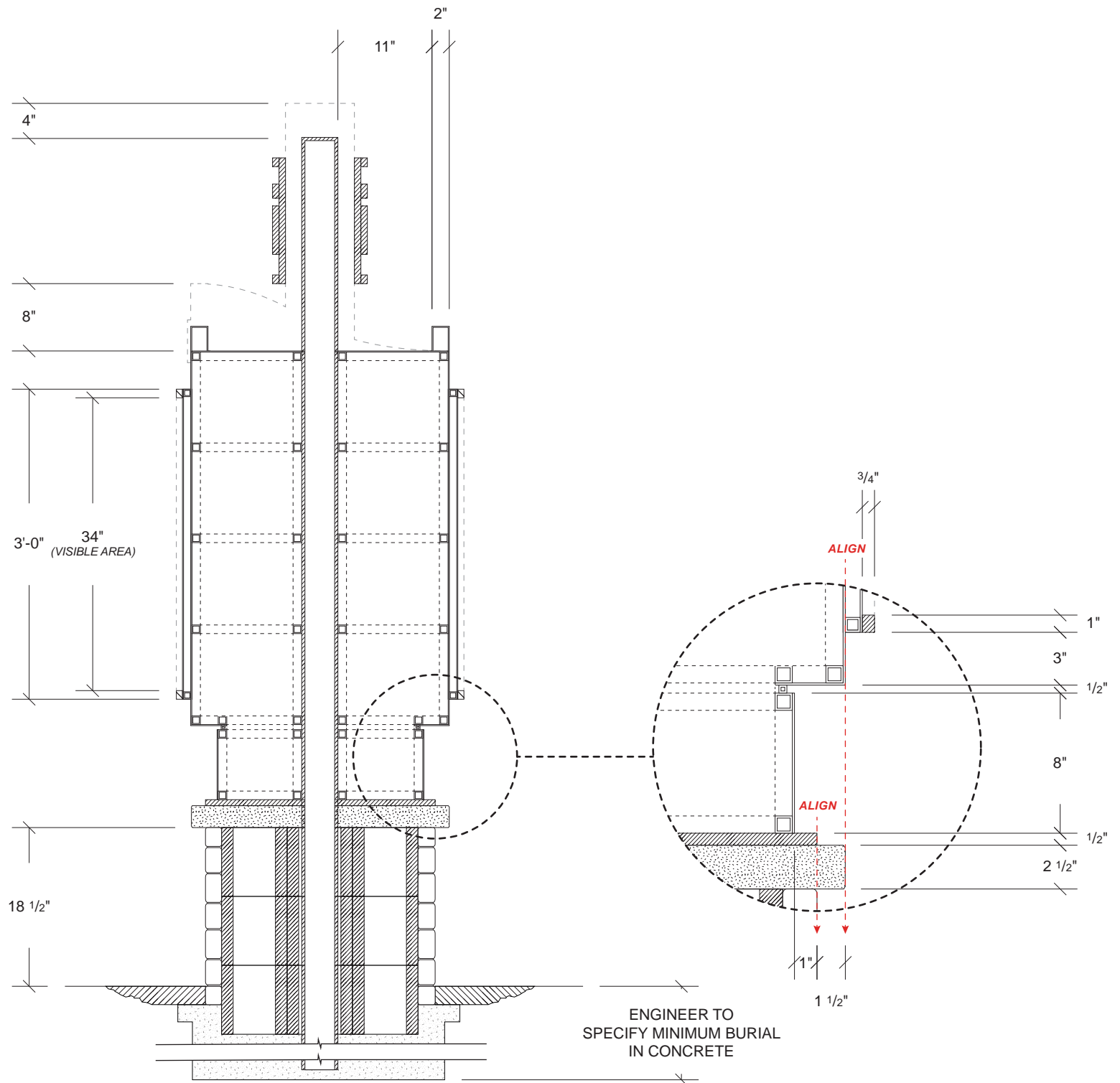
1. ALL LOCATIONS WILL REQUIRE ADDITIONAL REVIEW TO DETERMINE EXACT ORIENTATION AND PLACEMENT.
2. FABRICATOR TO FIELD VERIFY ALL DIMENSIONS AND CONDITIONS PRIOR TO FINAL PRODUCTION AND ENGINEERING.
3. SIGN(S) ARE (2) SIDED



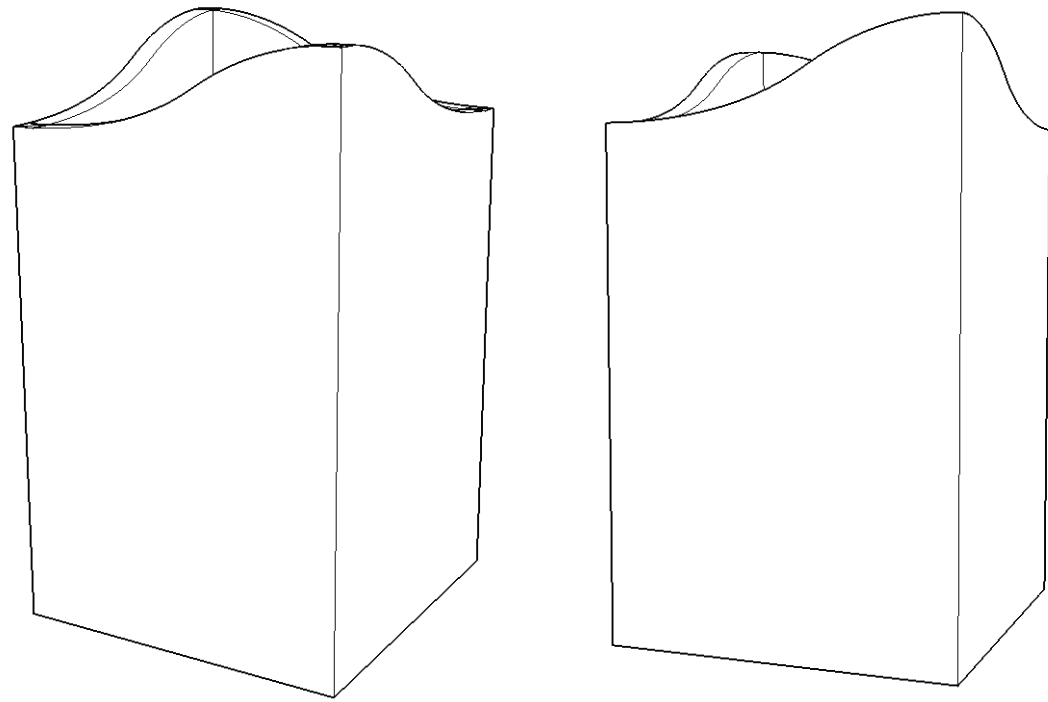




**1** PARK KIOSK - SIDE ELEVATION  
SCALE: 3/4" = 1'-0"



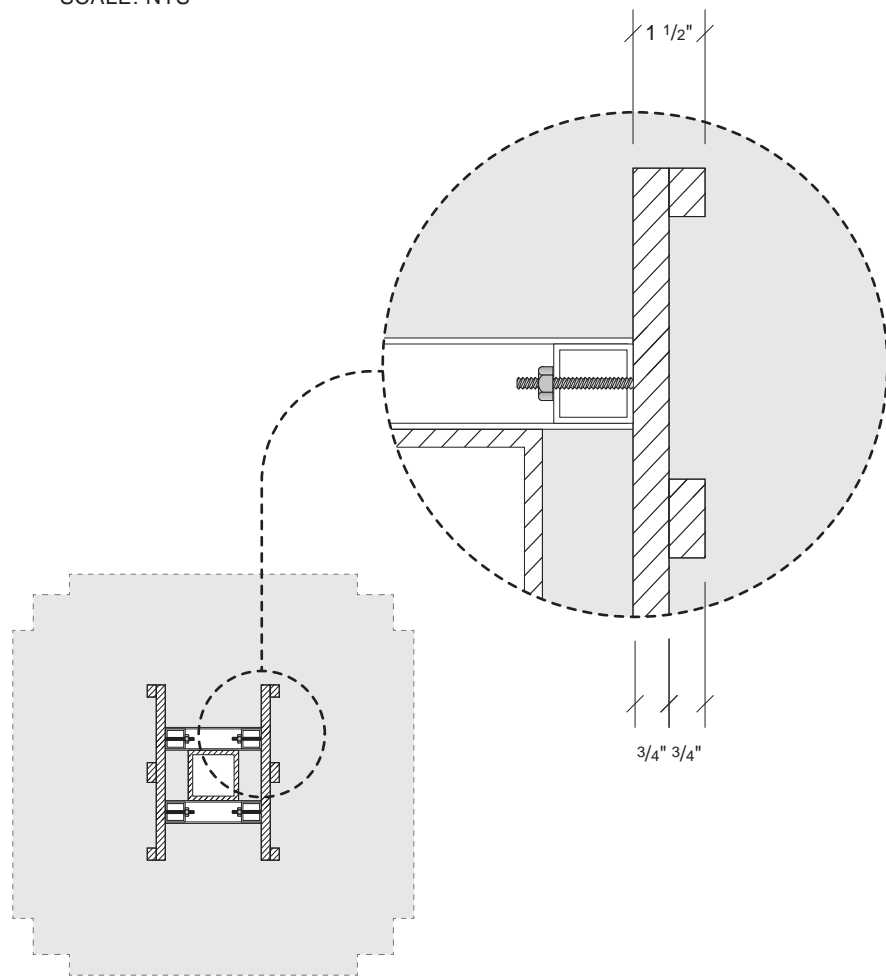
**2** PARK KIOSK - SECTION VIEW  
SCALE: 3/4" = 1'-0"



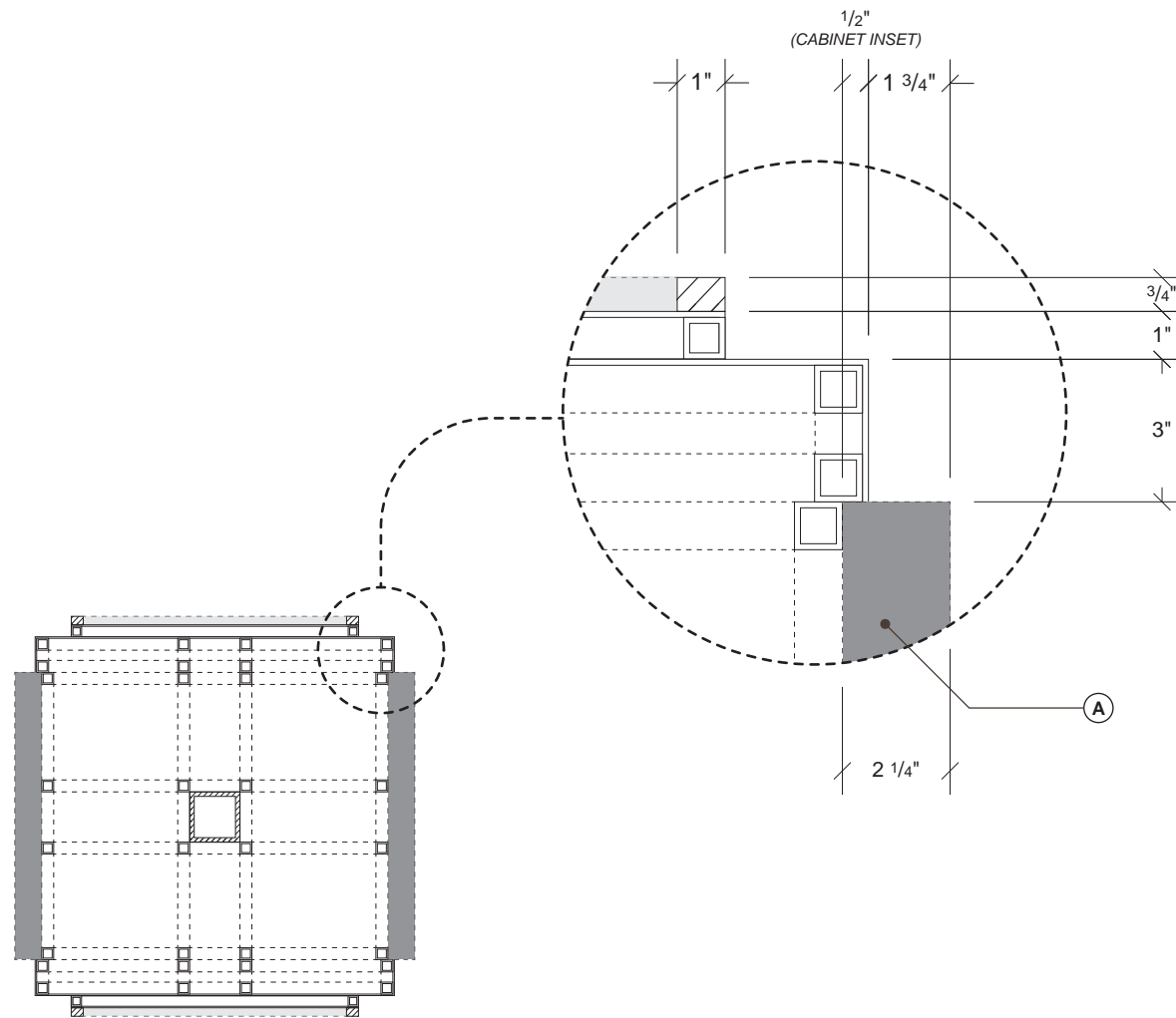
**3** PARK KIOSK - REFERENCE IMAGES

---

SCALE: NTS



**1** PARK KIOSK - SECTION VIEW  
SCALE: 3/4" = 1'-0"



**2** PARK KIOSK - SECTION VIEW  
SCALE: 3/4" = 1'-0"

## MATERIALS & SPECIFICATIONS

A - H1

### INSTALL:

- SIGN LOCATION TO BE SET BACK FROM RIGHT OF WAY IN ACCORDANCE WITH GEORGIA DOT REQUIREMENTS
- BACKFILL AS REQUIRED
- ALL STRUCTURAL COMPONENTS TO BE VERIFIED BY ENGINEER
- CONCRETE BURIAL DEPTH TO BE VERIFIED BY STRUCTURAL ENGINEER

**NOTES:**

1. ALL LOCATIONS WILL REQUIRE ADDITIONAL REVIEW TO DETERMINE EXACT ORIENTATION AND PLACEMENT.
2. FABRICATOR TO FIELD VERIFY ALL DIMENSIONS AND CONDITIONS PRIOR TO FINAL PRODUCTION AND ENGINEERING.
3. SIGN(S) ARE (4) SIDED