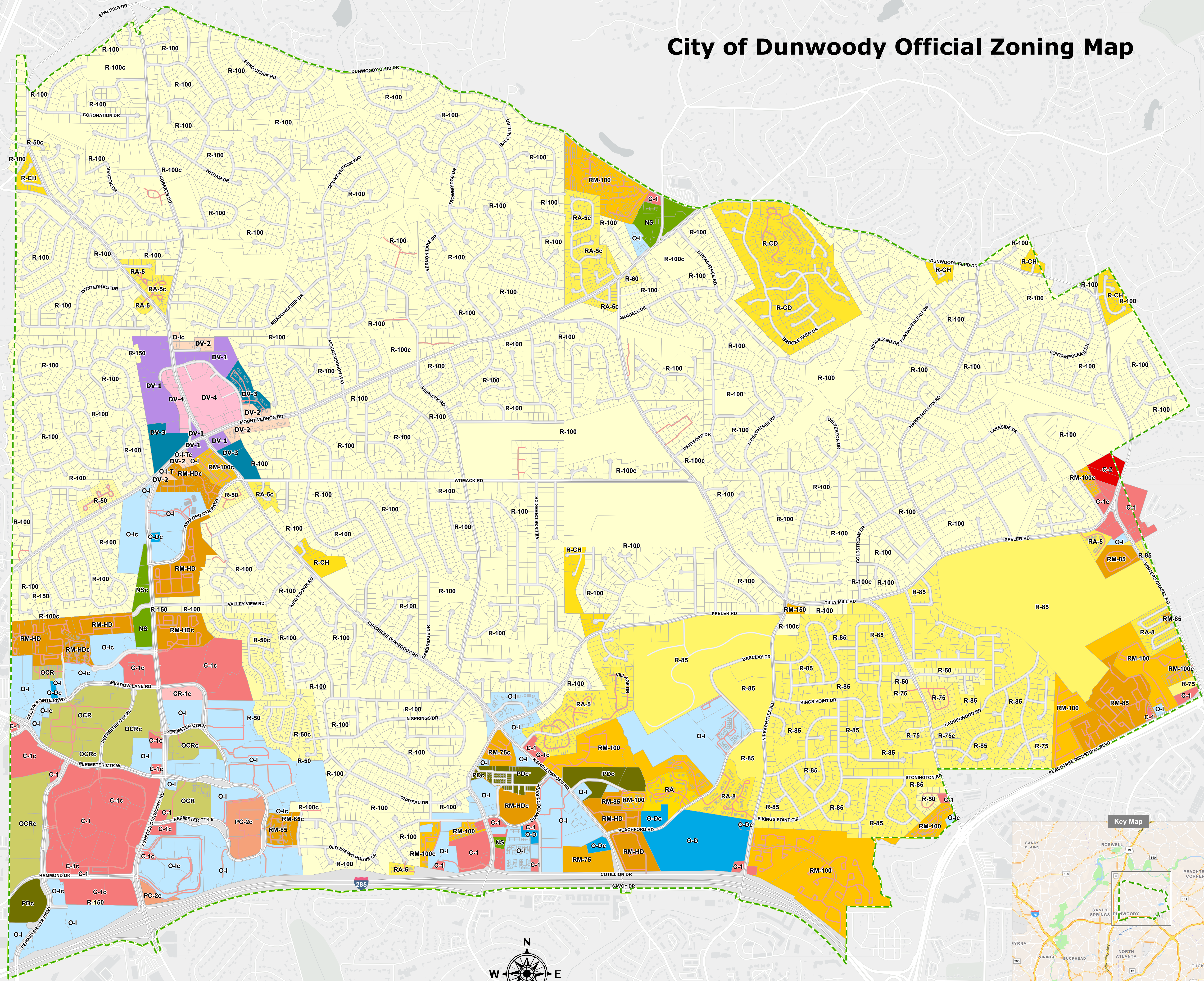
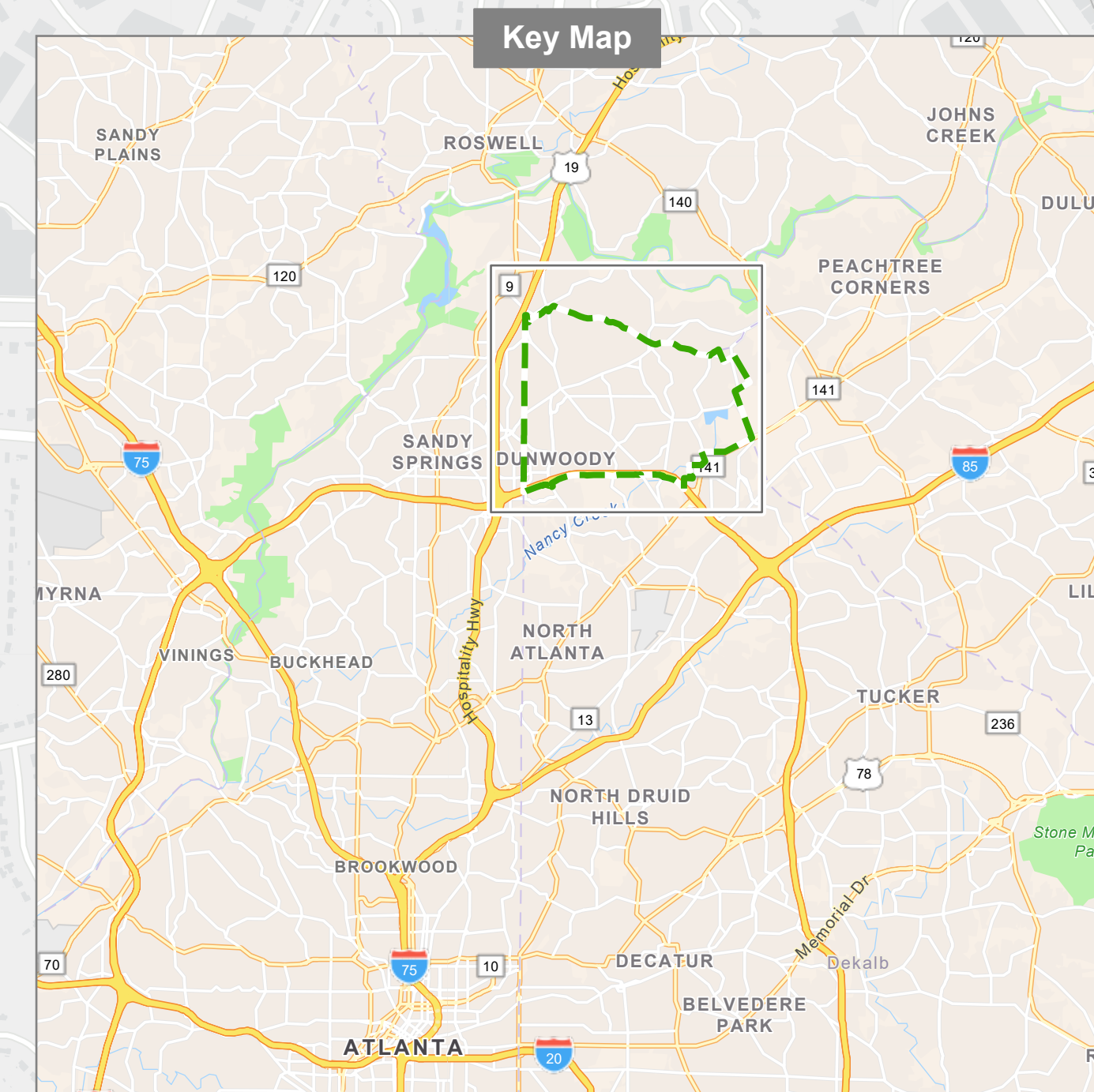
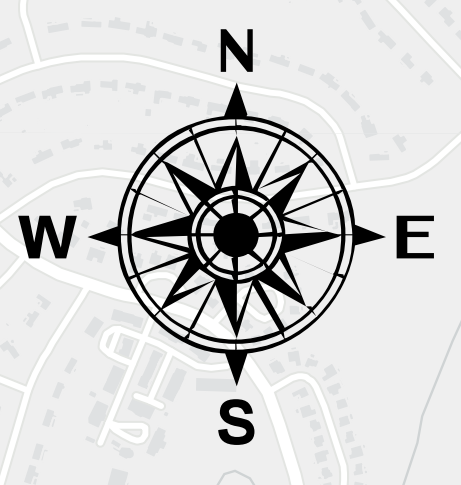


City of Dunwoody Official Zoning Map



Legend

- City Limit
- Parcel
- Streets: Major, Local, Private
- Zoning:
 - Village Commercial (DV-1)
 - Village Office (DV-2)
 - Village Residential (DV-3)
 - Village Center (DV-4)
 - Perimeter Center (PC-1)
 - Perimeter Center (PC-2)
 - Perimeter Center (PC-3)
 - Perimeter Center (PC-4)
 - Local Commercial (C-1)
 - General Commercial (C-2)
 - Commercial-Residential Mixed-Use (CR-1)
 - Industrial (M)
 - Neighborhood Shopping (NS)
 - Office-Distribution (O-D)
 - Office-Institution (O-I)
 - Office-Institution-Transitional (O-I-T)
 - Office-Commercial Residential (OCR)
 - Planned Development (PD)
 - Single-dwelling Residential (R-100)
 - Single-dwelling Residential (R-150)
 - Single-dwelling Residential (R-50)
 - Single-dwelling Residential (R-60)
 - Single-dwelling Residential (R-75)
 - Single-dwelling Residential (R-85)
 - Single-dwelling Residential (RA-5)
 - Single-dwelling Residential (RA-8)
 - Residential Community Development (R-CD)
 - Single-family Cluster Residential (R-CH)
 - RA
 - Multi-dwelling Residential (RM-100)
 - Multi-dwelling Residential (RM-150)
 - Multi-dwelling Residential (RM-75)
 - Multi-dwelling Residential (RM-85)
 - Multi-dwelling Residential (RM-HD)



Denis L. Shortal, Mayor
Sharon Lowery, City Clerk

Disclaimer: This map was compiled from records that have been filed with DeKalb County and/or the City by various parties. Neither the City nor its GIS/Mapping consultants assume any responsibilities for the accuracy of the information contained in this map.
Zoning: This map does not serve as the official record of zoning. City of Dunwoody Zoning Files take precedence over any errors or omissions that are observed on this map.
Copyright: Copyright (C) 2011 by the City of Dunwoody. All Rights Reserved. No part of this publication may be reproduced, stored in a retrieval system, or transmitted, in any form or by any means, electronic, mechanical, photocopying, recording, or otherwise, without the prior written permission of the City of Dunwoody.