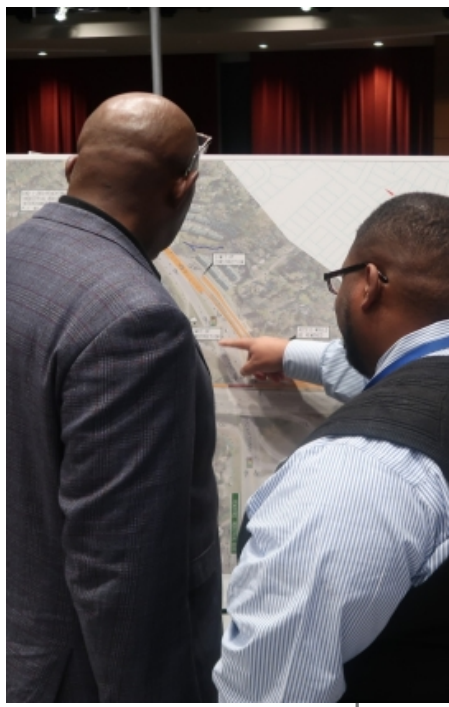
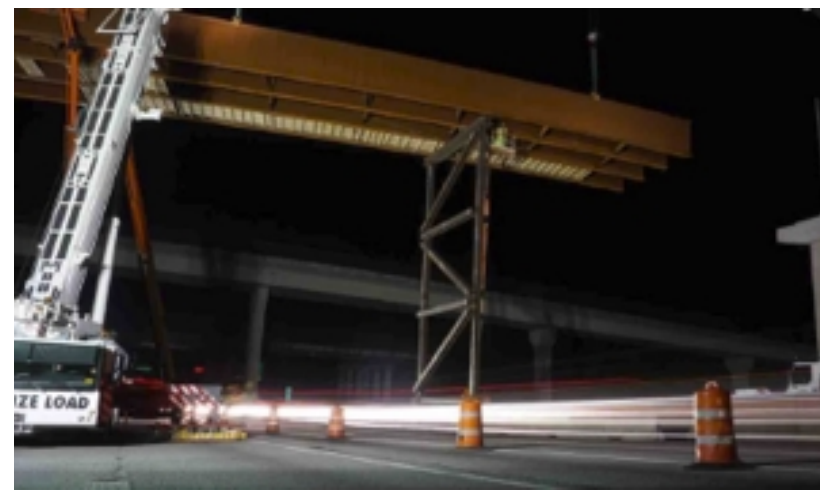




I-285 Top End Express Lanes Project Update



Tim Matthews, P.E.
 MMIP Program Manager
 February 22, 2021



Major Mobility Investment Program (MMIP)

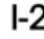



Major Interchange Projects

-  I-16/I-95
- I-285/I-20 West
-  I-285/I-20 East






Major Express Lanes Projects

- I-285 Eastside
-  I-285 Top End
(Two Construction Packages)
- I-285 Westside
-  SR 400



Major Interstate Widening Projects

-  I-85 Phase 1
-  I-85 Phase 2
-  I-16





Commercial Vehicle Lanes Project

I-75



I-285 Advanced Improvement Projects

- I-285 Westbound Ramp Extension
-  I-285/Peachtree Industrial Boulevard Interchange Improvements
- I-285 Westside Railroad Crossings Bridge Widening
- I-285 Westside Bridge Replacements
-  I-285 Eastside Bridge Replacements
- I-285 Westbound Auxiliary Lane Extension

 **In Procurement**

 **Under Construction**

 **Open to Traffic**

I-285 Top End Express Lanes



I-285 Top End Express Lanes

LEGEND:

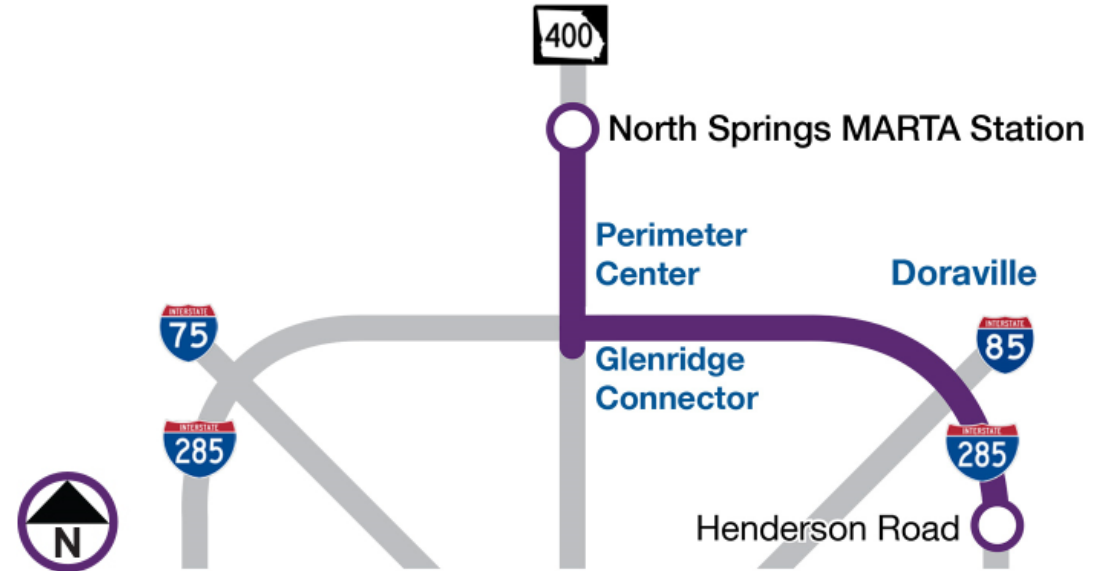
-  Project Corridor
-  One Lane Each Direction
-  Two Lanes Each Direction
-  Express Lanes Interchange
-  Express Lanes Merge
-  Project Limit

Project Length: 22.6 miles
Map is not to scale



I-285 Top End East Express Lanes

- I-285 limits: SR 400 to Henderson Road
 - Two new barrier-separated express lanes in both directions – at-grade and elevated – from SR 400 to I-85
 - One lane in both directions from I-85 to Henderson Road
- SR 400 limits: Glenridge Connector to the North Springs MARTA Station



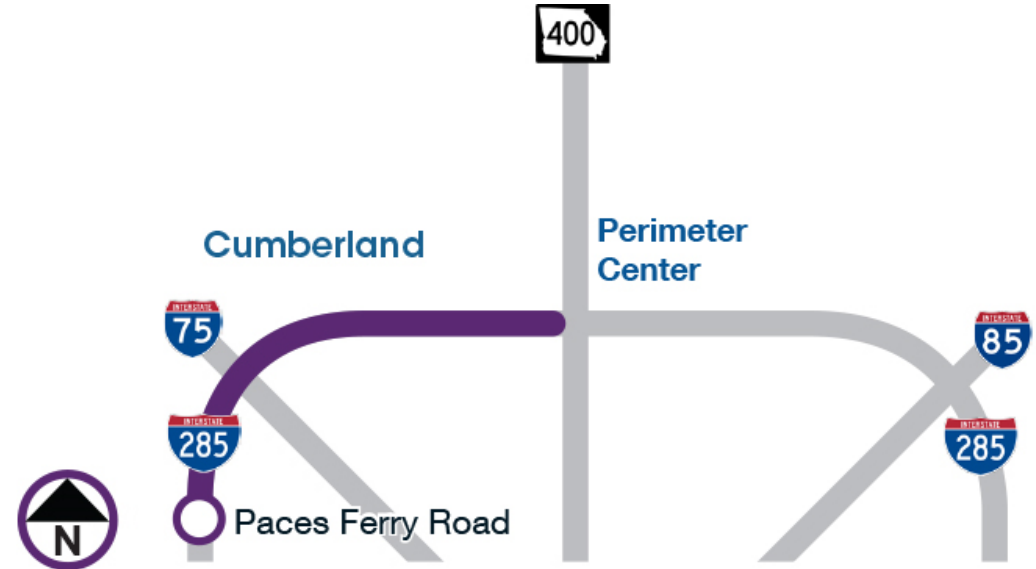
Construction Start
2024



Substantial Completion
2028

I-285 Top End West Express Lanes

- Limits: Just south of Paces Ferry Road to I-285/SR 400 Interchange
 - Two new barrier-separated express lanes in both directions – at-grade and elevated – from I-285/SR 400 Interchange to I-75
 - One lane in each direction from I-75 to Paces Ferry Road



Construction Start
2026



Substantial Completion
2032

I-285 Top End Express Lanes Timeline



2018:
Environmental
process
began



2019-2021:
Early right-
of-way
acquisition



Jan. 2020:
Public
Information
Open House
(PIOH)



Q3 2021:
Public Hearing
Open House
(PHOH)



2024:
Construction
starts for I-285
Top End East



2026:
Construction
starts for I-285
Top End West



2028:
**I-285 Top End
East –**
Substantial
Completion

2032:
**I-285 Top End
West –**
Substantial
Completion

Current Activities



Draft Environmental Impact Statement (DEIS) under review by FHWA



Utility coordination is ongoing with Georgia Power



Refining design of access points within City of Dunwoody



Acquiring early right-of-way (Negotiations with Chateau Club Townhomes are currently underway)

Perimeter Center Parkway and Ashford Dunwoody Road Bridges



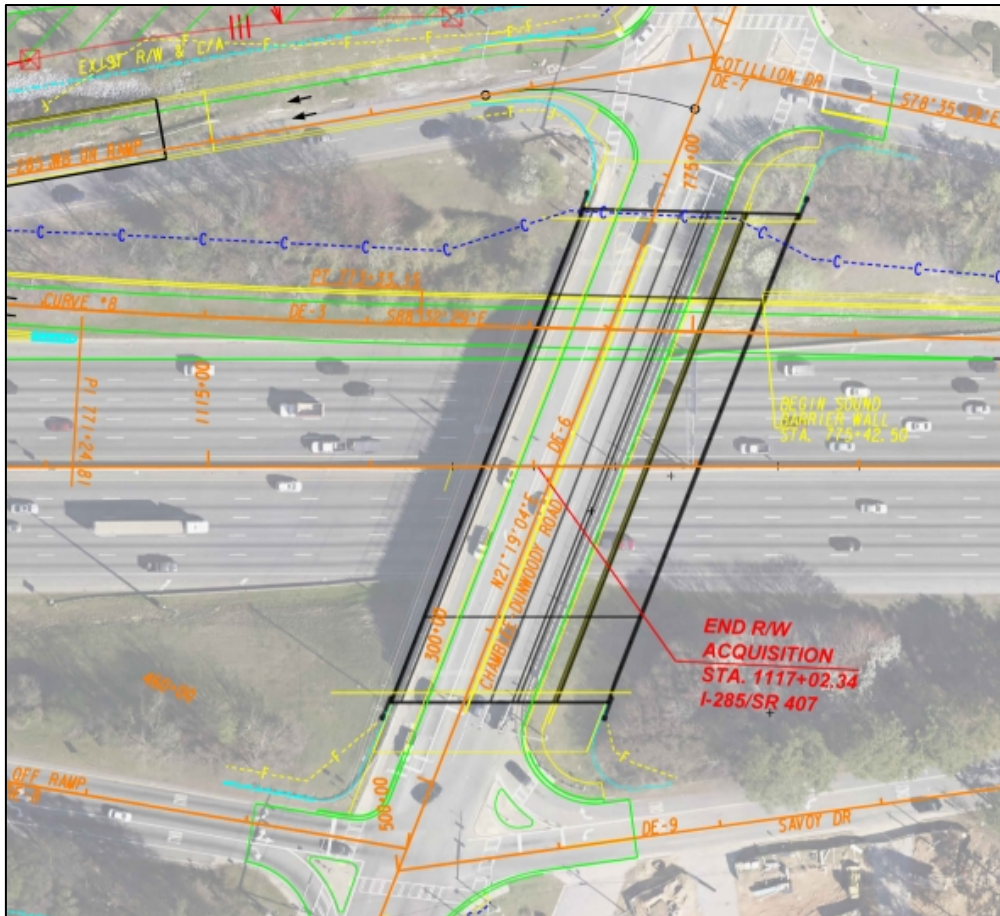
- Direct access ramps will be provided to Perimeter Center Parkway
- Express Lanes elevated over Perimeter Center Parkway bridge and Ashford Dunwoody Road bridge
- On-going coordination between Top End design and Transform 285/400 construction in the area

Cotillion Drive and Savoy Drive One-Way Pair Conversion



- Reconstruction of Cotillion / Savoy Drives as one-way pairs with direct access ramps to Express Lanes in same travel direction
 - Cotillion Drive – 2 lanes westbound
 - Savoy Drive – 2 lanes eastbound
- N. Shallowford Road (under I-285) to be reconstructed between Cotillion / Savoy Drives
 - Road closure required
 - Detour to Cotillion/Savoy Drives

Chamblee Dunwoody Road Bridge Replacement



- Part of the I-285 WB Ramp Extension to Ashford Dunwoody Advanced Improvement Project.
- Bridge replacement to include:
 - Additional length to accommodate ramp extension and EL under bridge
 - Additional width to accommodate wider sidewalk/multi-use path planned as part of the City's streetscape project in this area.

I-285 Top End Express Lanes Contact Information



<https://majormobilityga.com/projects/topend/>



285TopEndExpressLanes@dot.ga.gov



404-978-7490 (project hotline)



#285TopEnd

THANK
YOU
For Viewing



@GeorgiaDOT



@GADeptofTrans



@gadeptoftrans



www.dot.ga.gov/MMIP

