



4800 Ashford Dunwoody Road
Dunwoody, Georgia 30338
dunwoodyga.gov | 678.382.6700

MEMORANDUM

To: Mayor and City Council

From: Michael Smith, Public Works Director

Date: January 25, 2021

Subject: **Discussion of Aesthetic Enhancements for the Chamblee Dunwoody Road Bridge Replacement at I-285**

BACKGROUND

The Georgia Department of Transportation (GDOT) is planning to replace the Chamblee Dunwoody Road bridge over I-285 as part of the project currently referred to as the I-285 Westbound Ramp Extension. The new bridge will have the same number of lanes on Chamblee Dunwoody Road as the existing bridge with a 10-foot sidewalk on the east side of road and a 12-foot wide shared use path on the west side. With Cotillion Drive and Savoy Drive becoming one-way roads, a return access lane connecting the two roads will also be added to the east side of the bridge.

The planned bridge replacement provides an opportunity for the city to add decorative enhancements to the new bridge which serves as one of the primary gateways into Dunwoody. GDOT has developed a process that the cities along the S.R. 400 Express Lane project have been following to have bridge enhancements included in that project. The process is as follows:

1. Decide what types of enhancements the city wants to add to the new bridge and set a budget.
2. Develop the details of the enhancements to a point where the cost can be estimated and the details can be included in the scope of GDOT's design build project.
3. Enter into a Memorandum of Understanding (MOU) with GDOT whereby GDOT agrees to include the enhancements in their project and the city agrees to pay for the cost of the enhancements.

The city has partnered with the Perimeter Community Improvement District (PCID) and contracted with Kimley-Horn to begin exploring options for the Chamblee Dunwoody Road bridge as well as other existing and planned bridges in the Perimeter area along I-285. To begin the design process, Kimley-Horn has developed the attached presentation to provide examples of enhancement components and styles from other transportation projects.

RECOMMENDED ACTION

Staff requests City Council direction on the following questions:

1. Does the City Council want to allocate funds to pay for decorative enhancements on the Chamblee Dunwoody Road bridge? If so, what should the target budget be?



4800 Ashford Dunwoody Road
Dunwoody, Georgia 30338
dunwoodyga.gov | 678.382.6700

2. Given budget parameters, what components (e.g. bridge bents, barriers and railings, branding/art) should be the focus of the design?

With direction from City Council, the design team is prepared to develop conceptual design options to be presented at a February council meeting for additional feedback.

The city has committed \$9,200 out of the Public Works professional services budget for the initial effort on this project. The additional cost to complete the concept development and prepare the city for entering into the MOU with GDOT is \$19,300, which is an unbudgeted expense. If the City Council wants to move forward with this initiative, staff requests authorization for the Finance Director to reallocate \$19,300 from surplus capital funds.

PRECEDENT IMAGERY

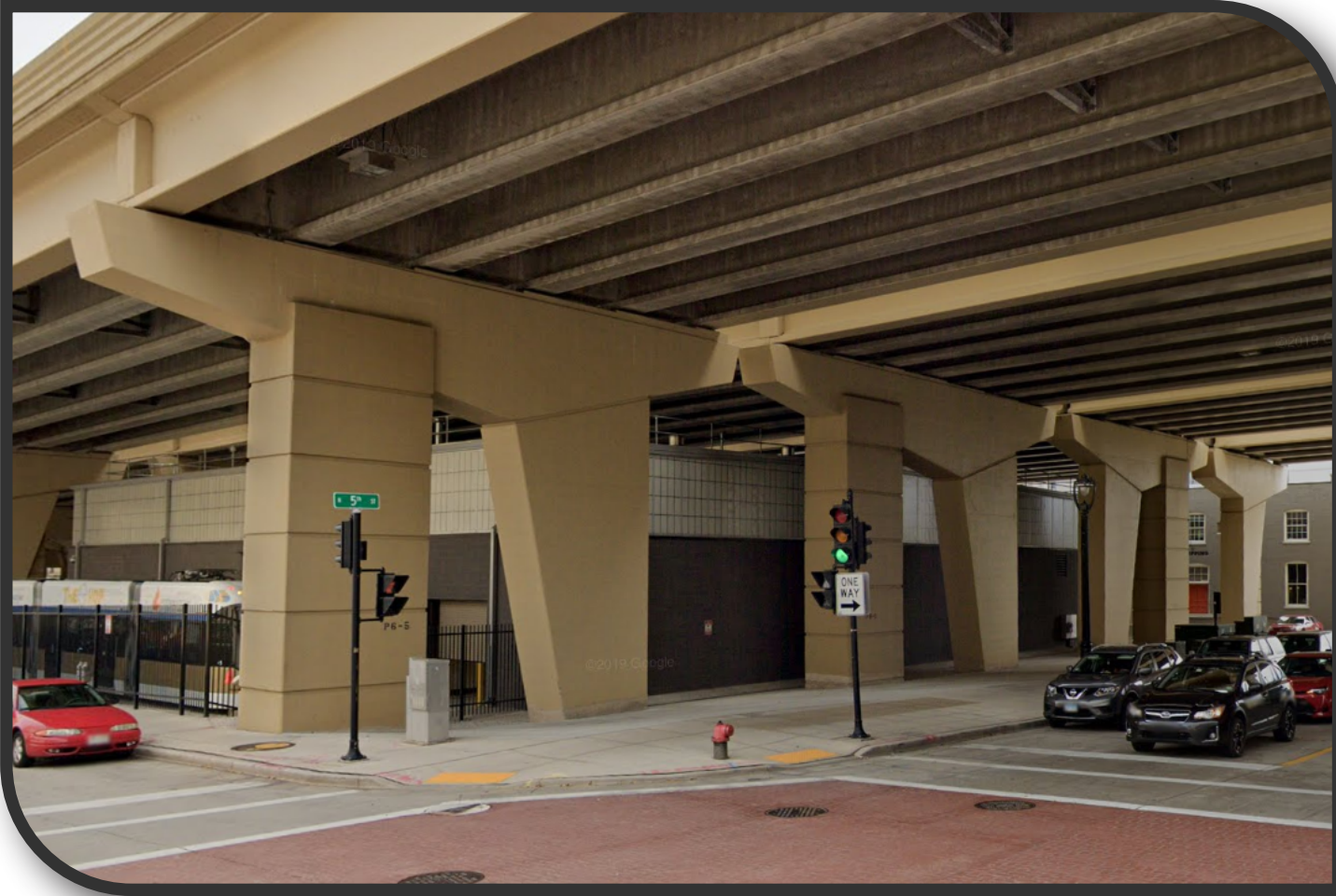
Encore Parkway Bridge, Alpharetta, GA



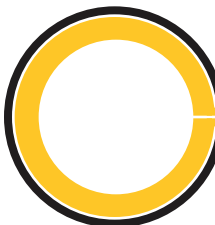
Interstate 4 Rebuild - Orlando, FL



Interstate 43, Milwaukee WI



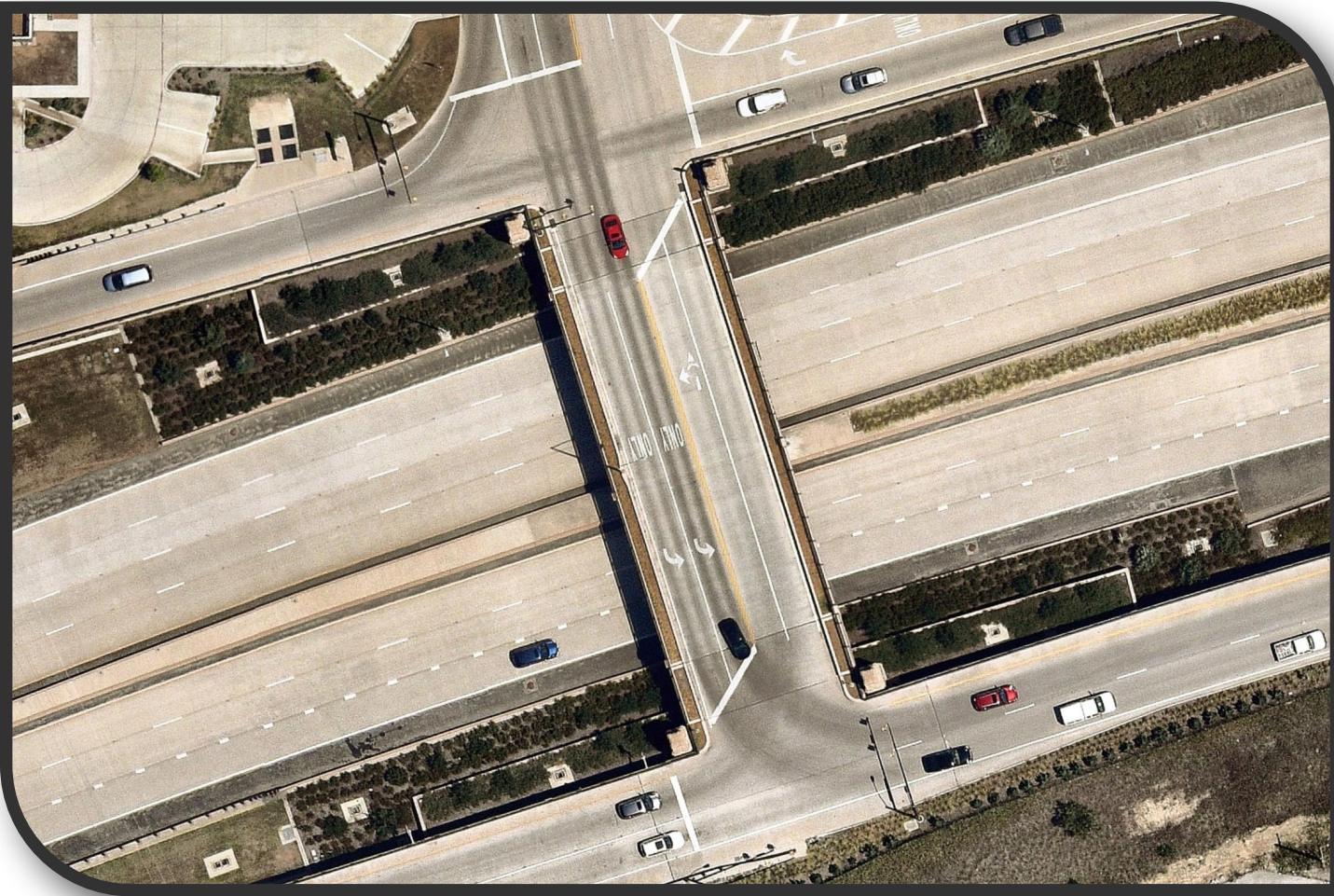
PERIMETER CENTER BRIDGE ENHANCEMENTS



January 25, 2021

PRECEDENT IMAGERY

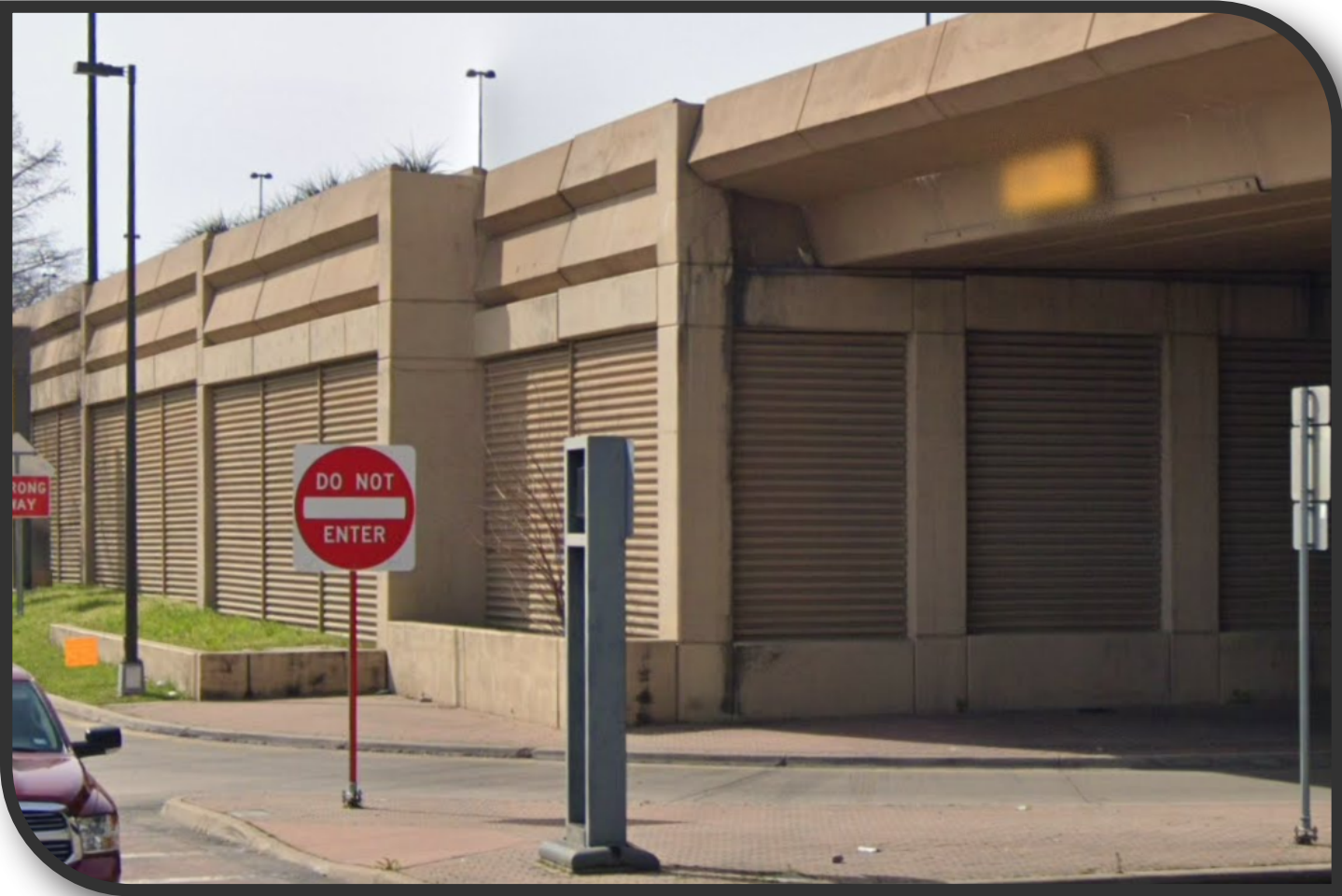
Chisholm Trail Parkway, Fort Worth, TX



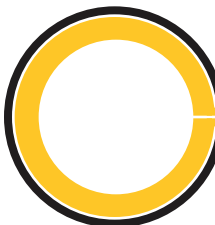
Interstate 10, El Paso, TX



Highway 75 - Dallas, TX



PERIMETER CENTER BRIDGE ENHANCEMENTS



January 25, 2021

EXISTING DESIGN IN THE DISTRICT



PERIMETER CENTER BRIDGE ENHANCEMENTS

January 25, 2021

EXISTING DESIGN IN THE DISTRICT



PERIMETER CENTER BRIDGE ENHANCEMENTS



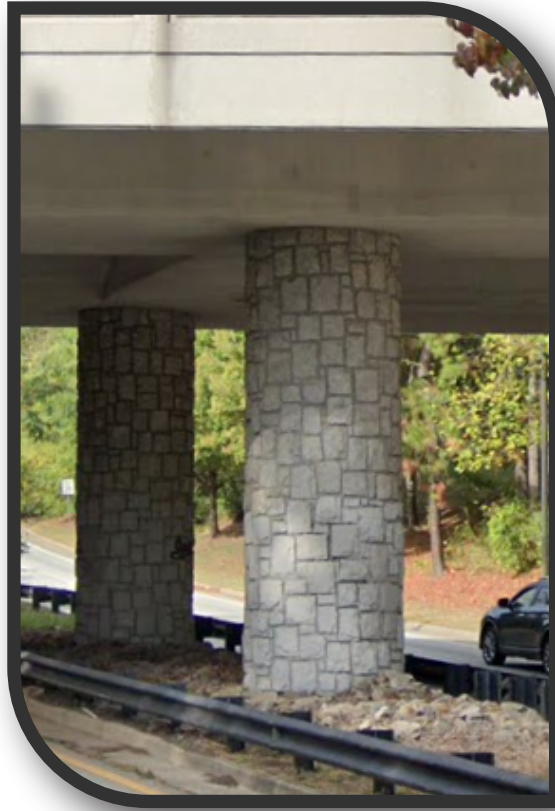
January 25, 2021



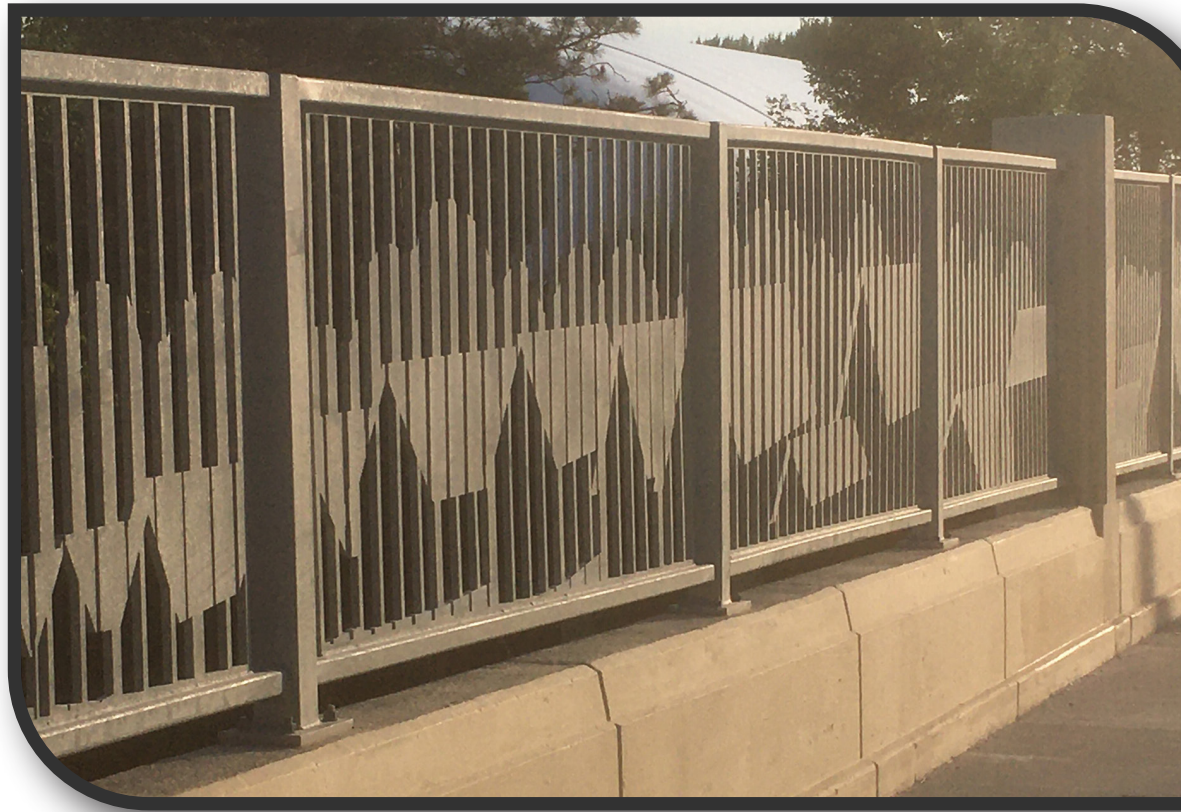
Kimley»Horn

DESIGN COMPONENTS

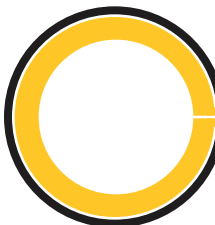
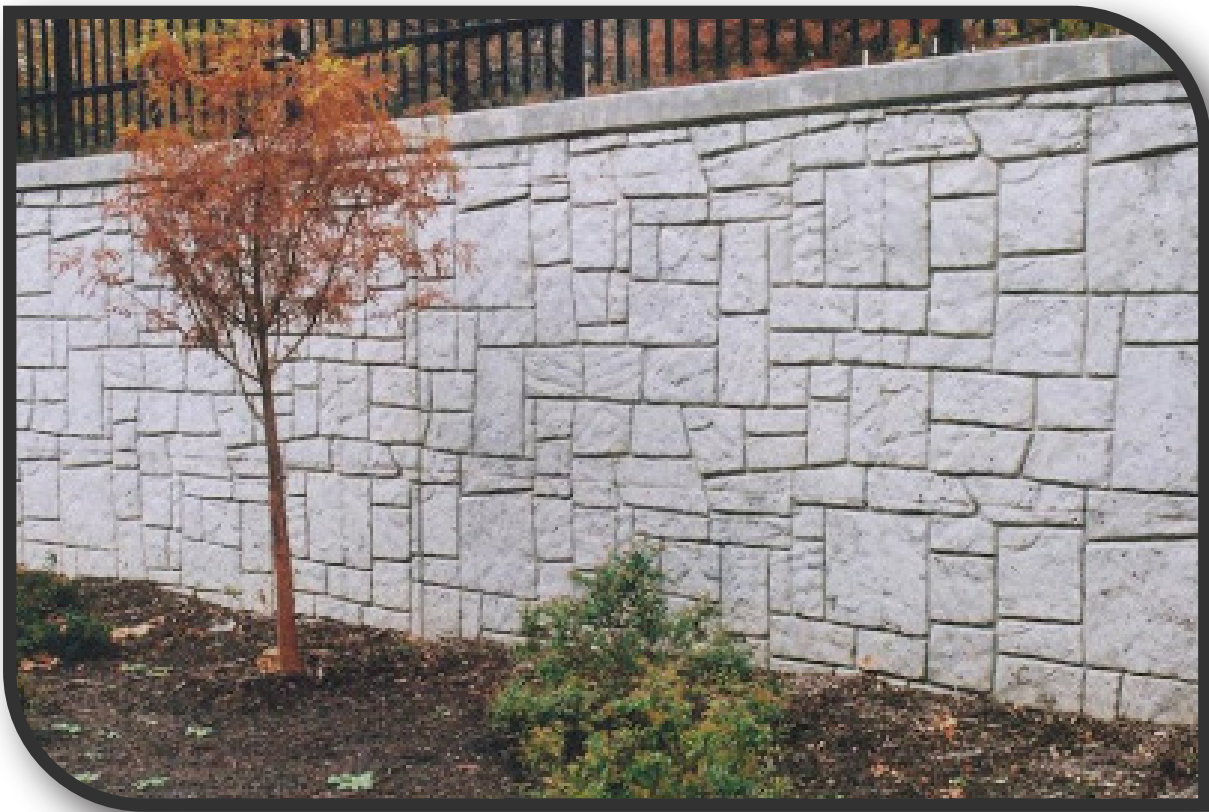
Bridge Bents



Barriers and Railings



Retaining Walls



PERIMETER CENTER BRIDGE ENHANCEMENTS

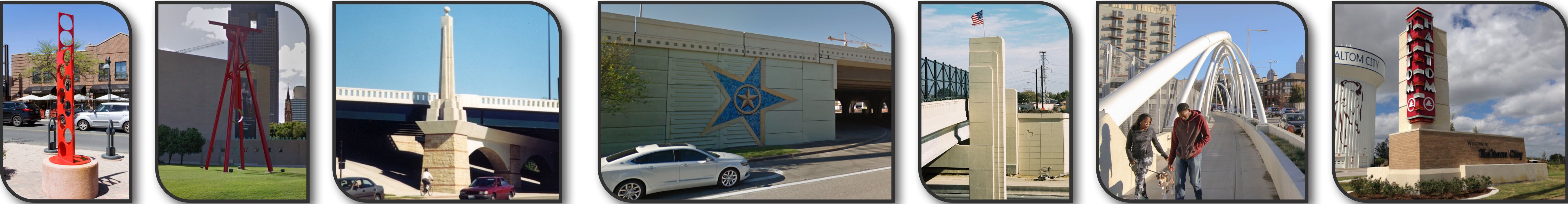
January 25, 2021



Kimley»Horn

DESIGN COMPONENTS

Monumentation



Lighting



Landscaping



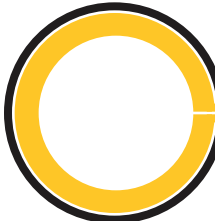
PERIMETER CENTER BRIDGE ENHANCEMENTS

January 25, 2021

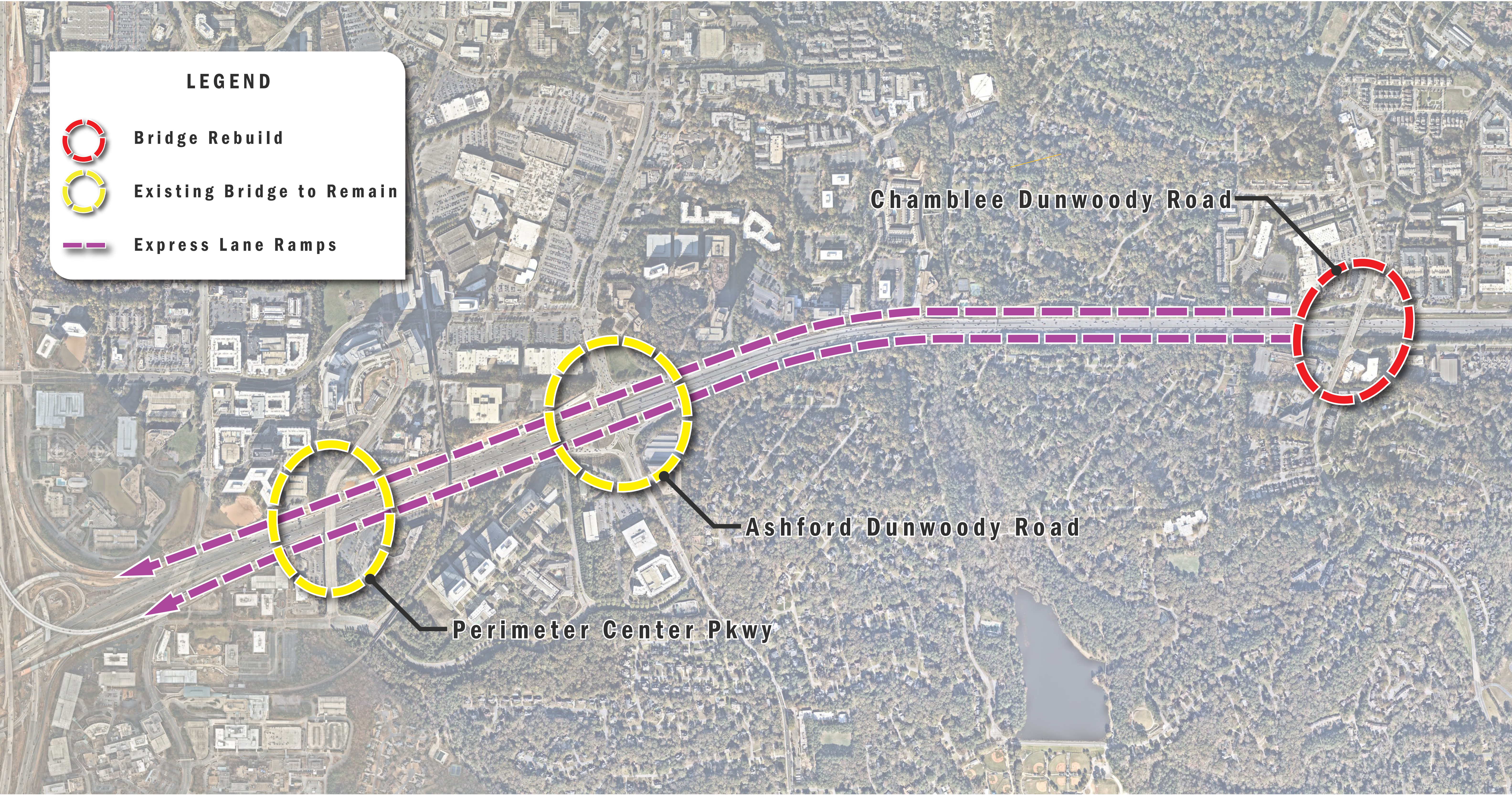
CHARACTER AND MATERIALS



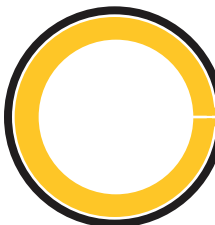
PERIMETER CENTER BRIDGE ENHANCEMENTS



January 25, 2021

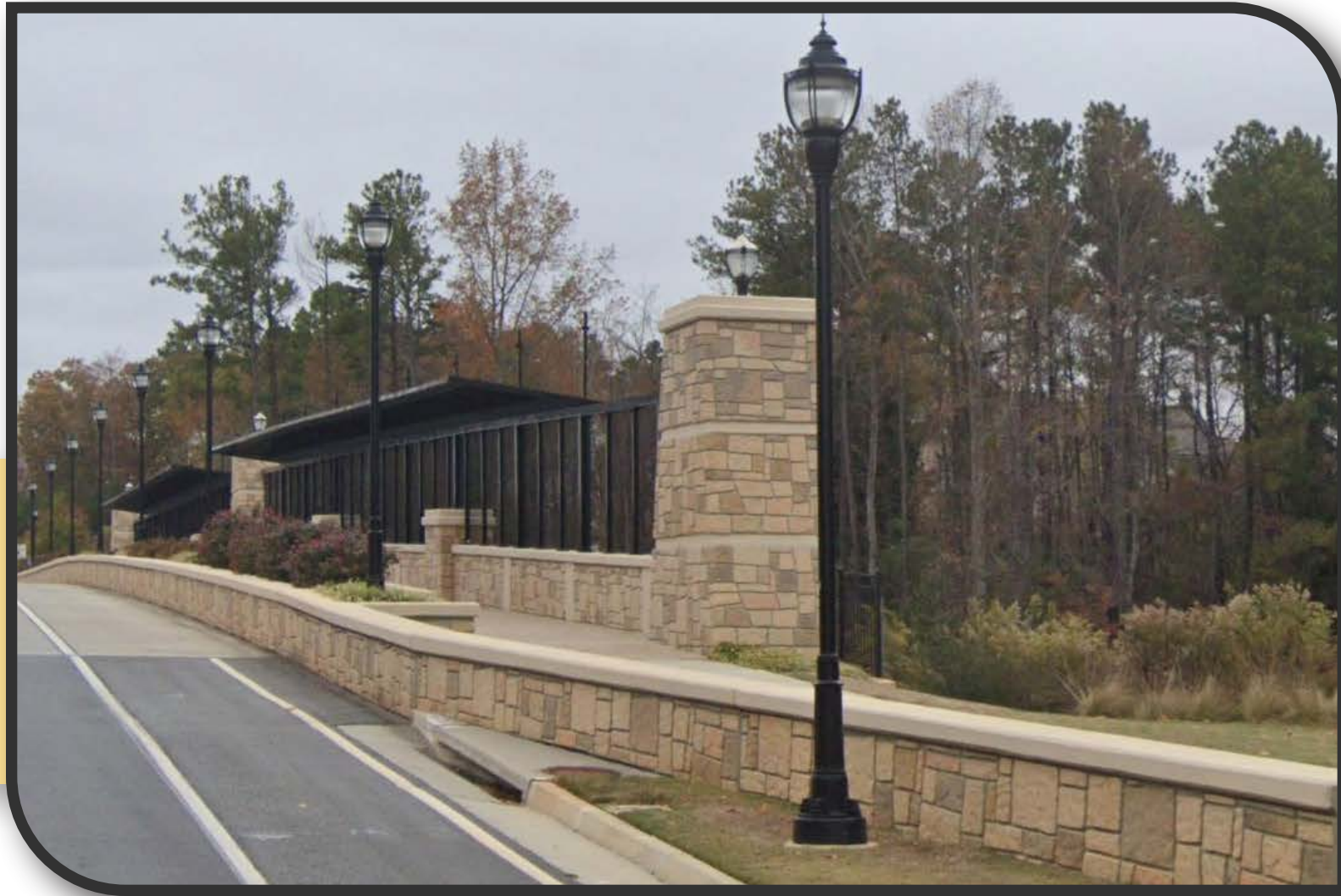


PERIMETER CENTER BRIDGE ENHANCEMENTS

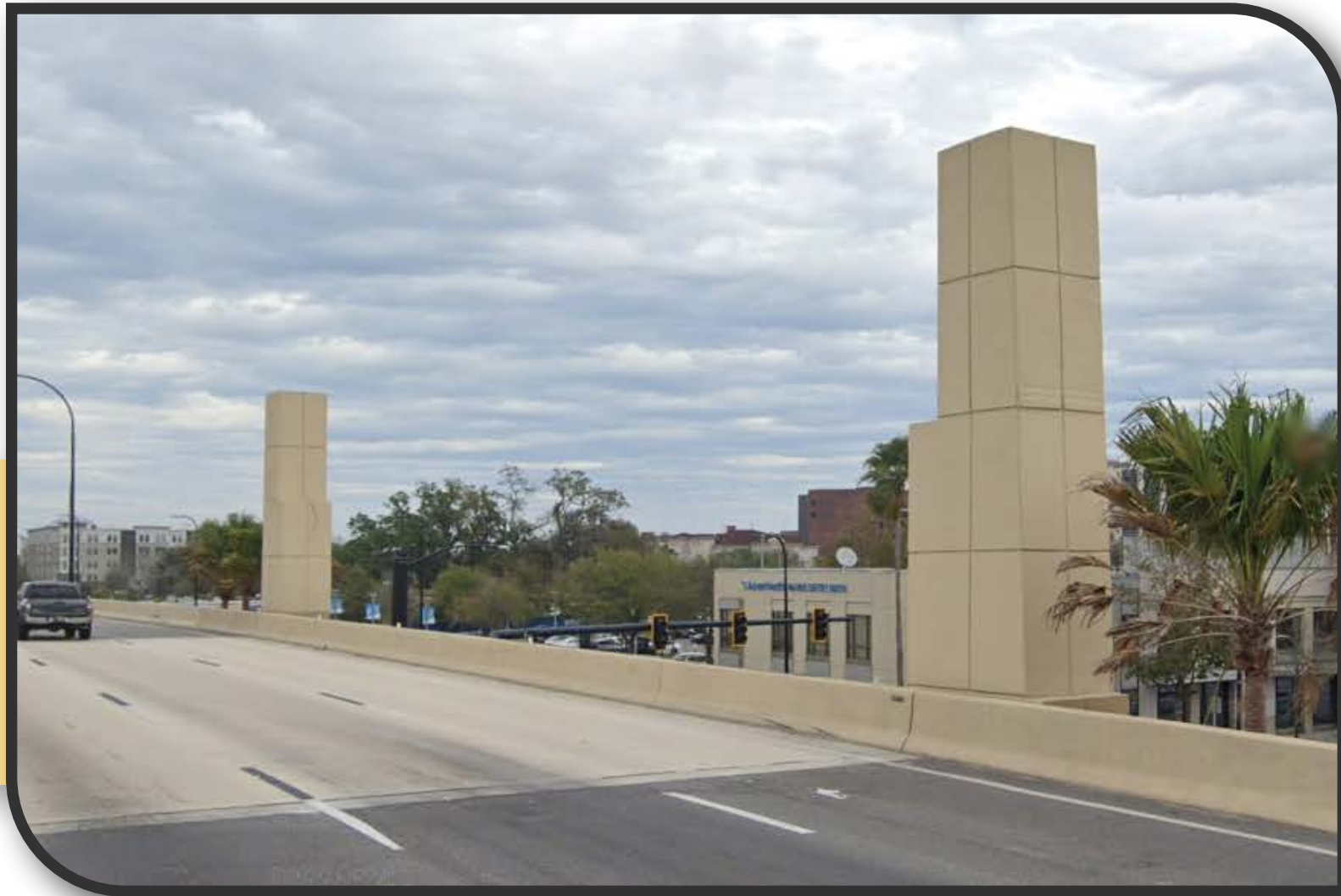
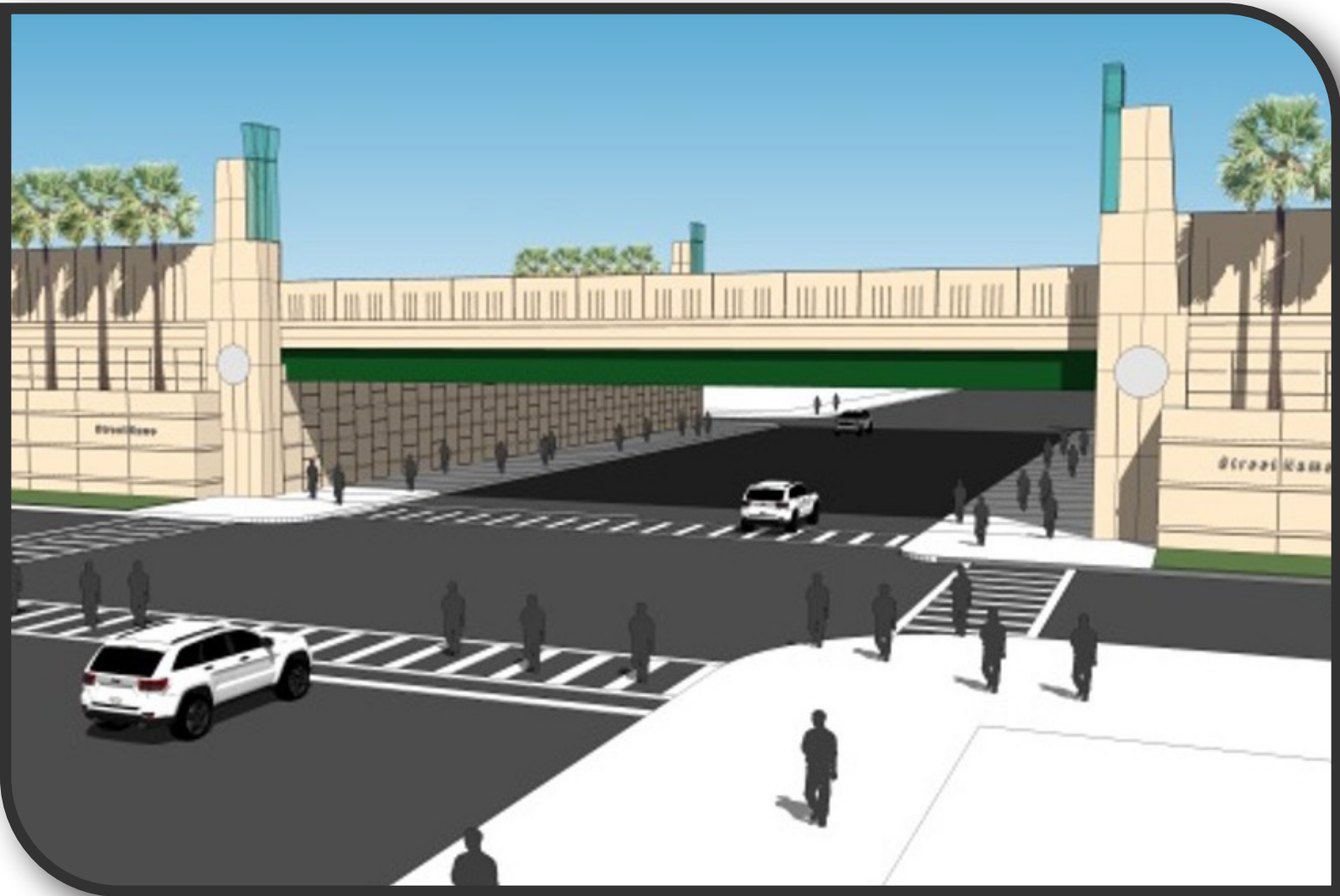


January 25, 2021

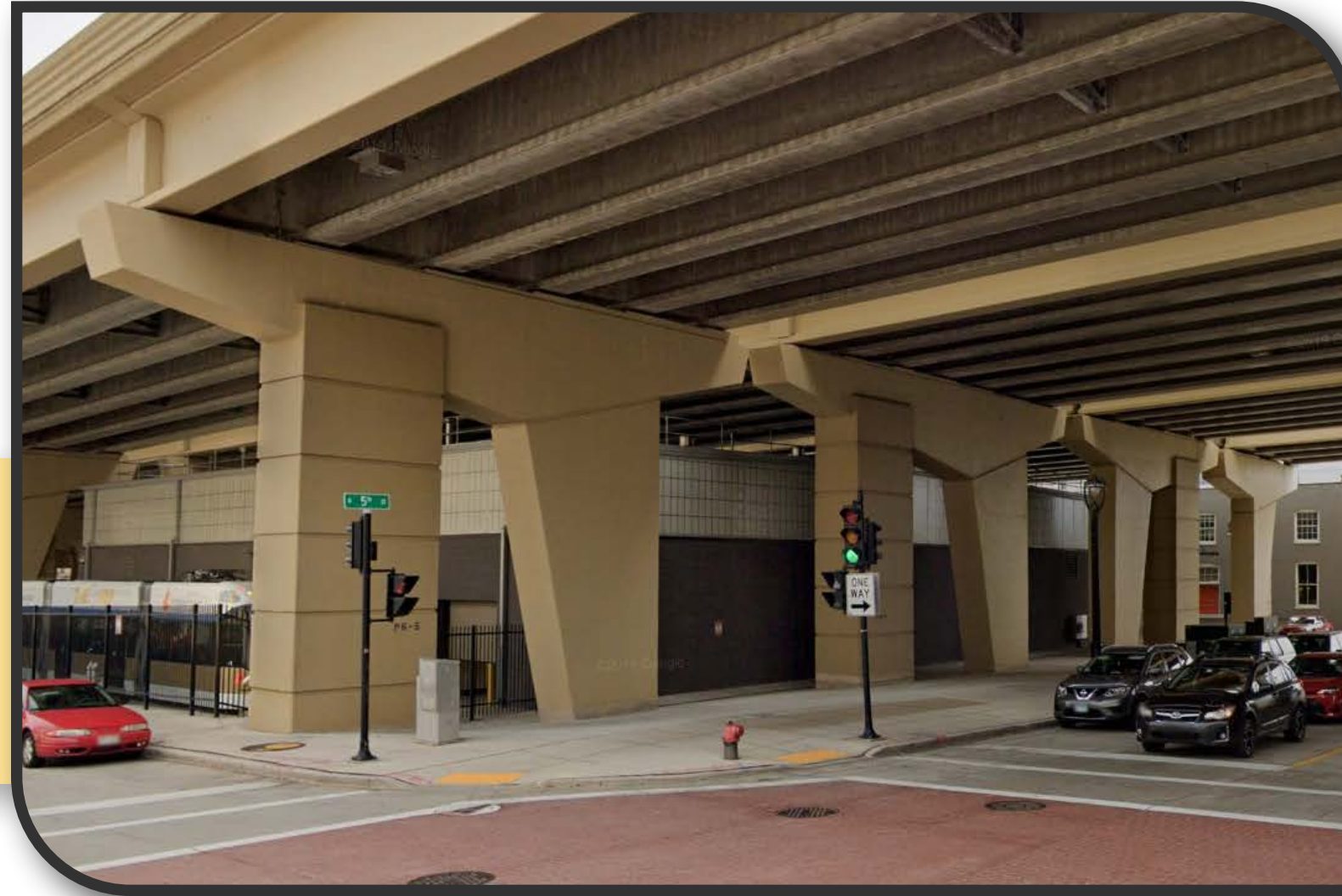
PRECEDENT IMAGERY



**Encore Parkway Bridge
Alpharetta, GA**



**Interstate 4 Rebuild
Orlando, FL**



**Interstate 4
Milwaukee WI**

PERIMETER CENTER BRIDGE ENHANCEMENTS

January 25, 2021



Kimley»Horn

PRECEDENT IMAGERY



**Chisholm Trail Parkway
Fort Worth, TX**



**Interstate 10
El Paso, TX**



**Highway 75
Dallas, TX**

PERIMETER CENTER BRIDGE ENHANCEMENTS

January 25, 2021

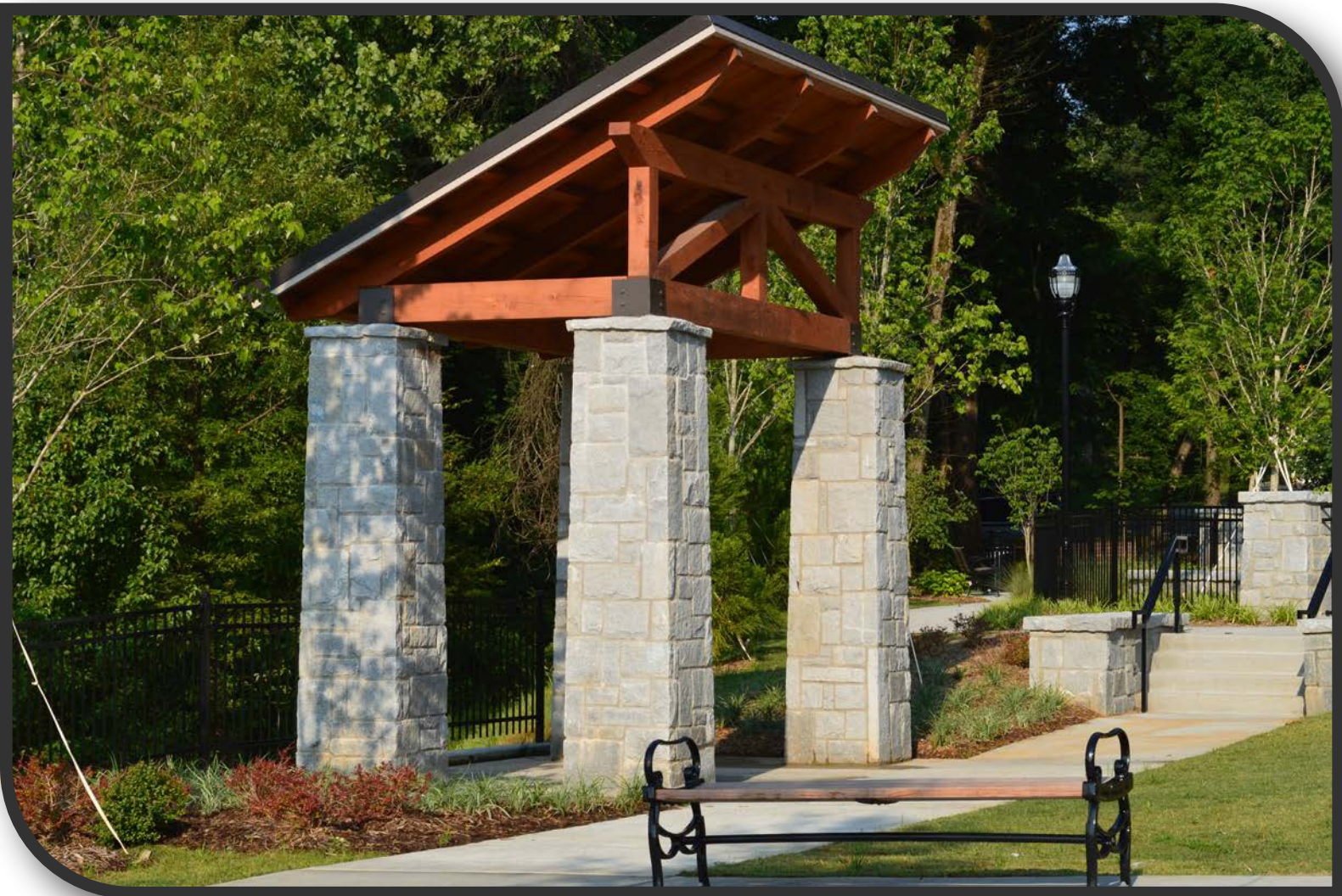
EXISTING DESIGN AT THE PERIMETER



Modern design with industrial elements



Strip developments & traditional design

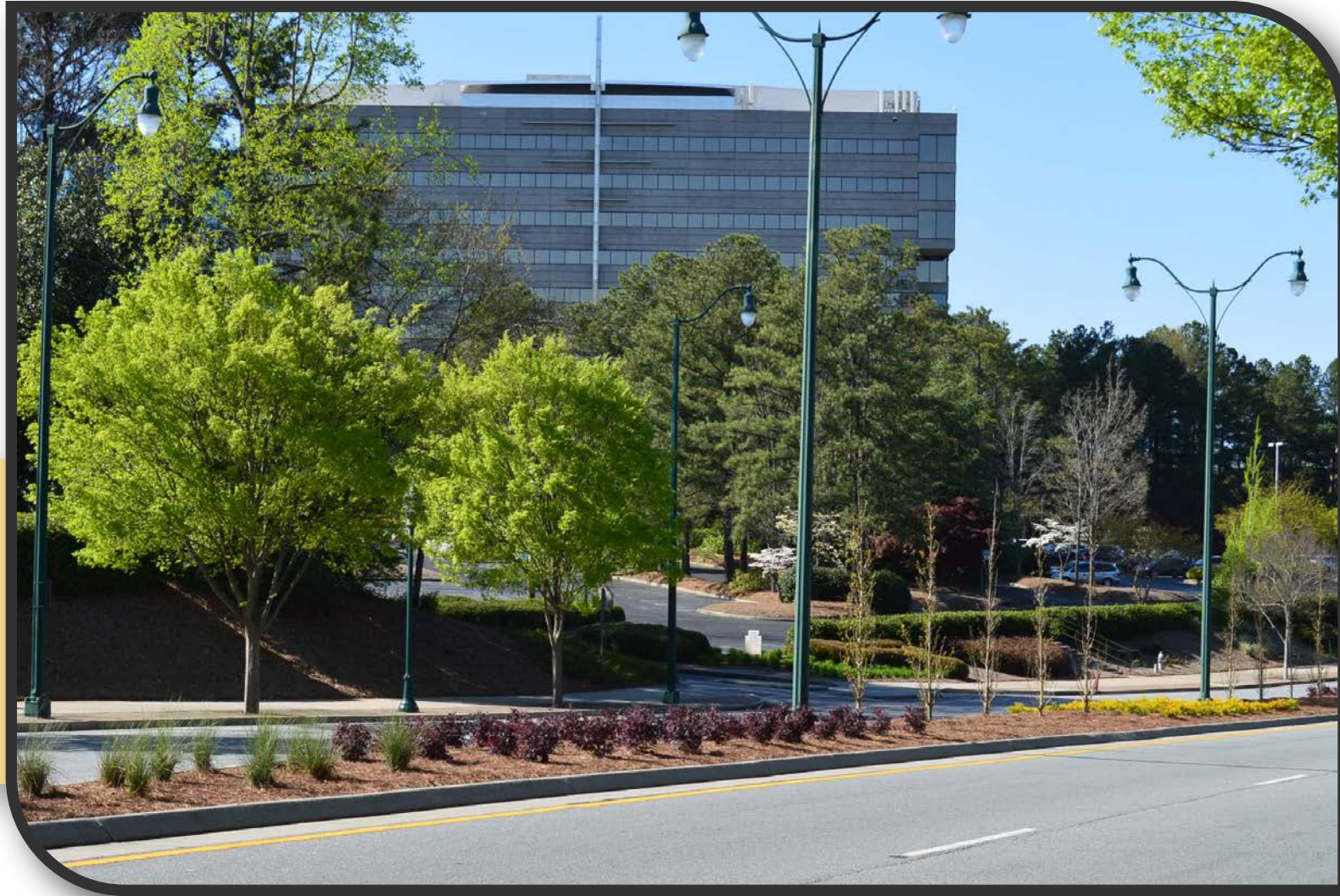
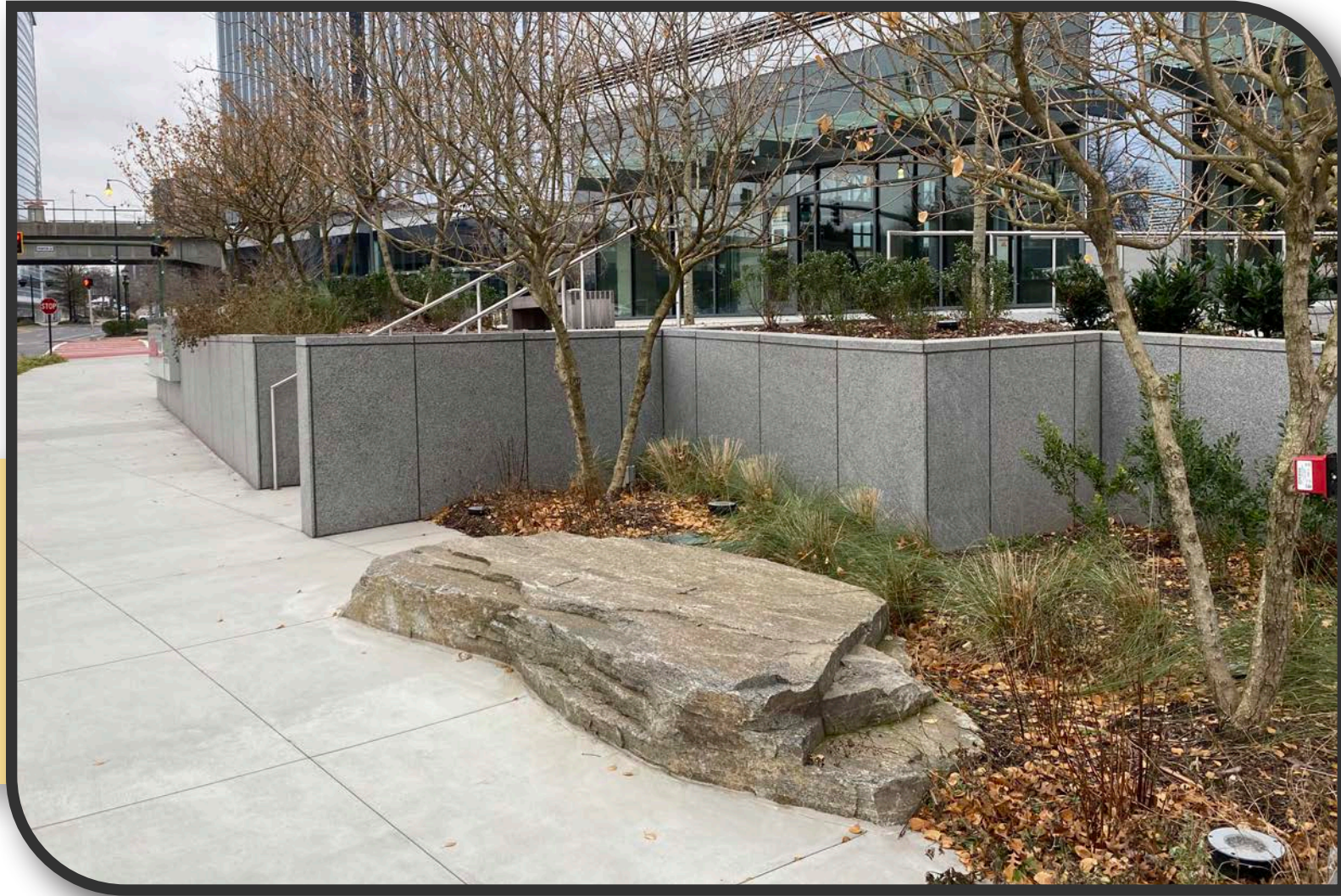
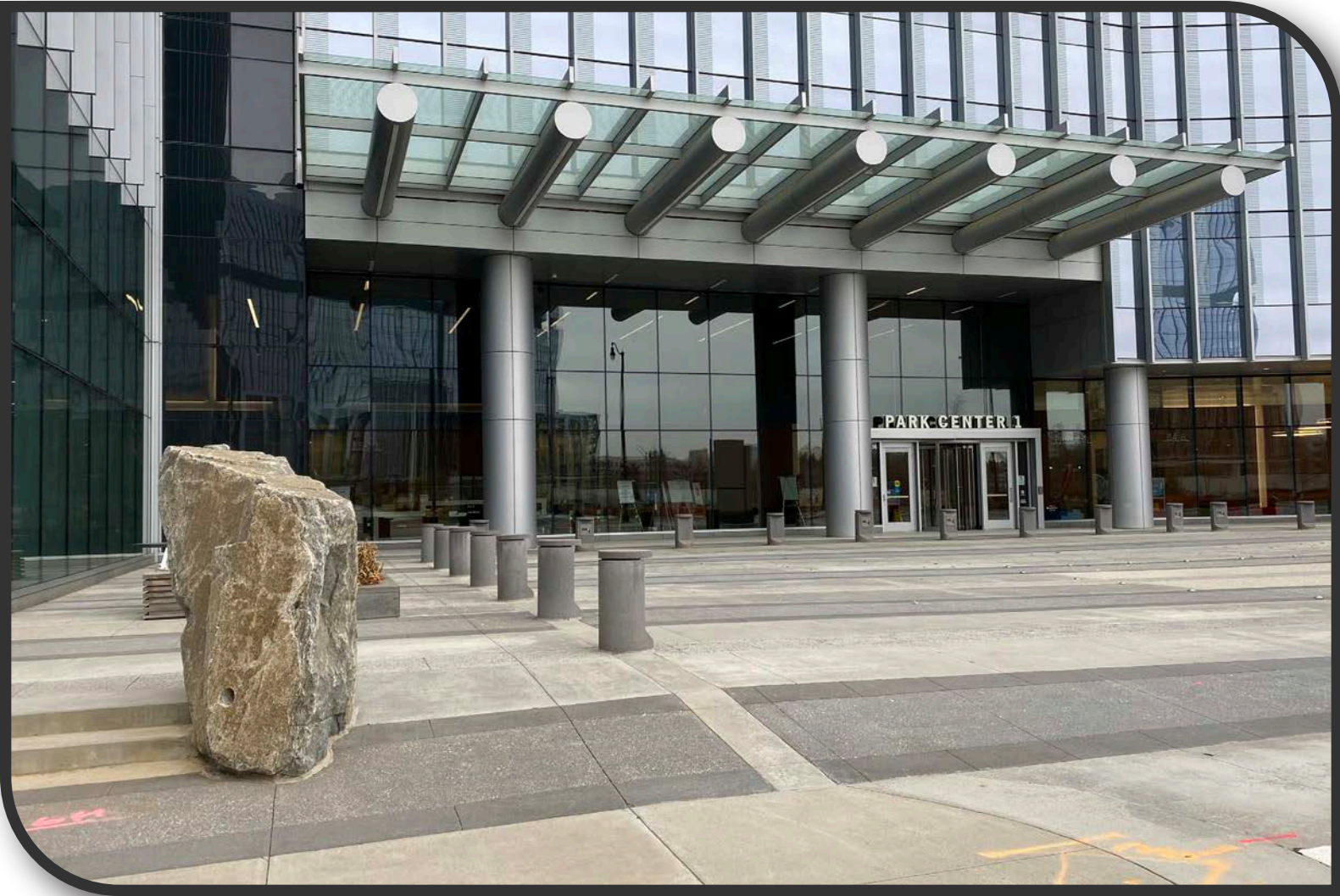


Stone and brick elements

PERIMETER CENTER BRIDGE ENHANCEMENTS

January 25, 2021

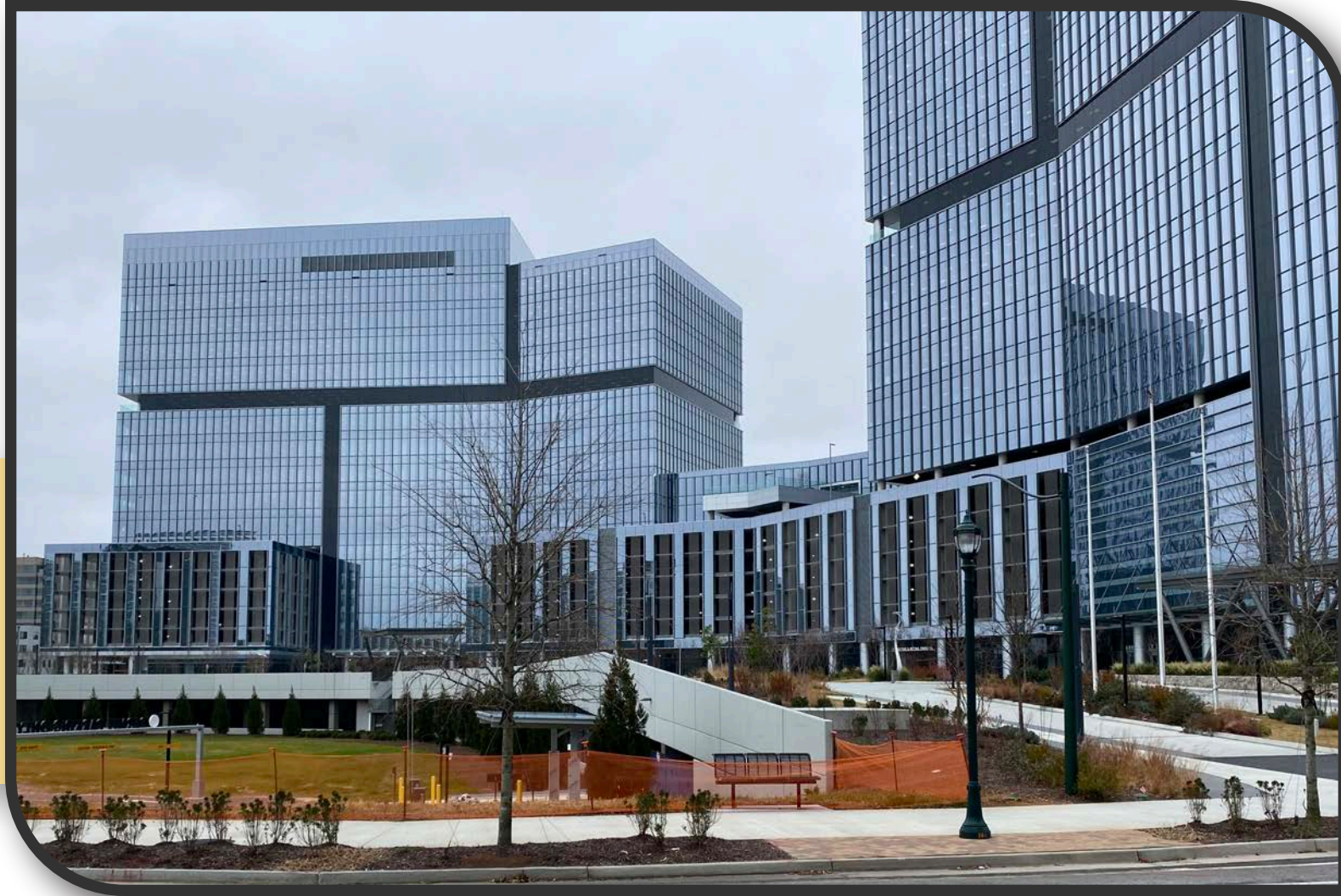
EXISTING DESIGN AT THE PERIMETER



Integration of natural and contemporary elements



Contemporary materials like glass, metal, and concrete

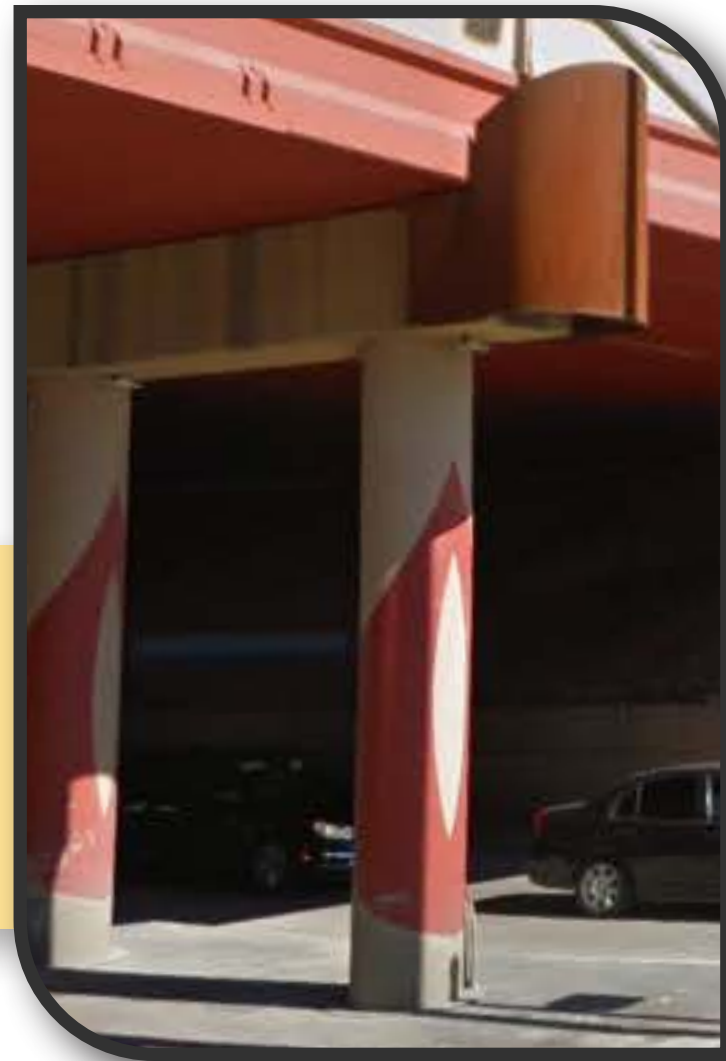


Modern, simplified geometry emphasizes lines and shapes

PERIMETER CENTER BRIDGE ENHANCEMENTS

January 25, 2021

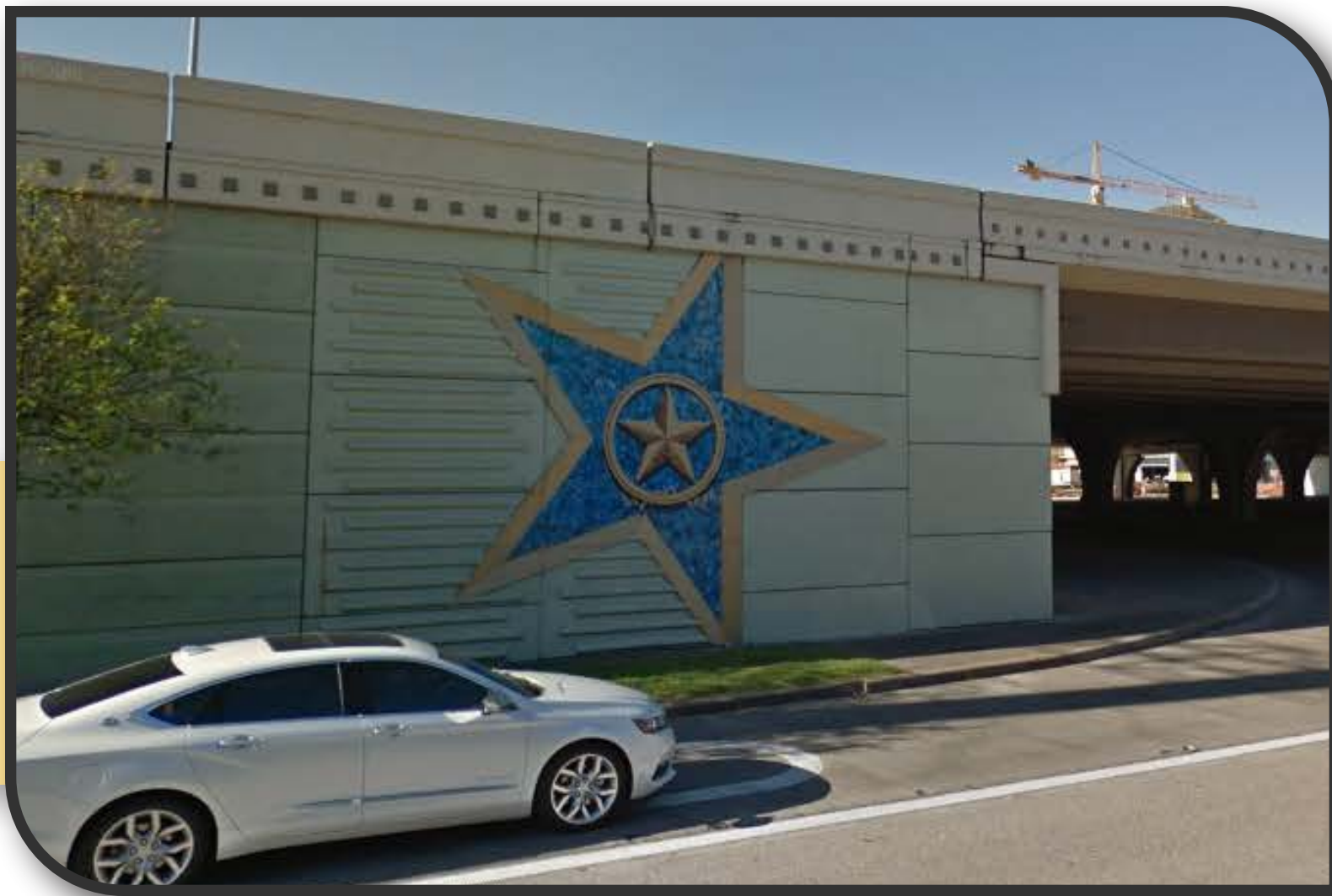
DESIGN COMPONENTS



Bridge Bents



Barriers and Railings



Retaining Walls

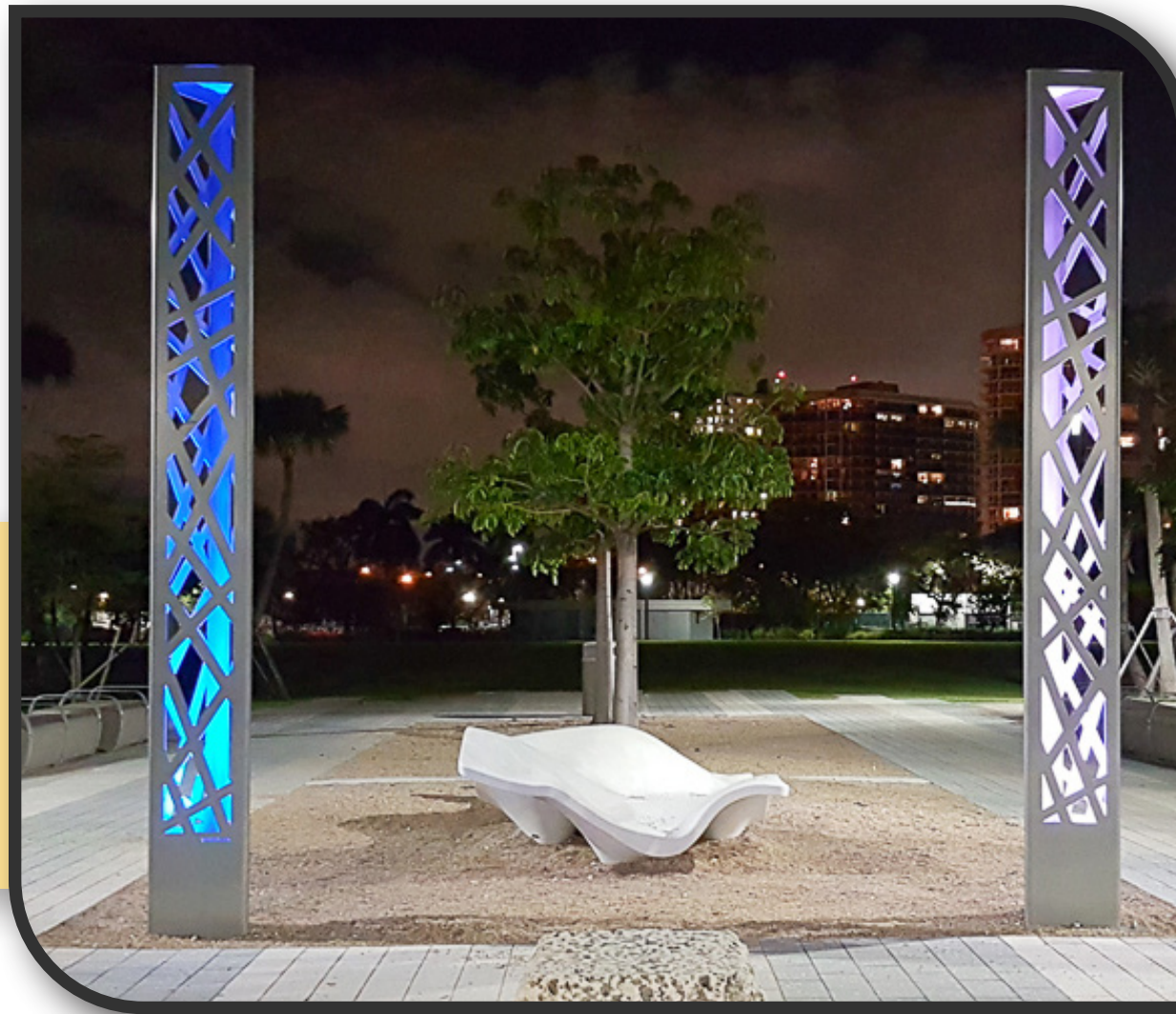
PERIMETER CENTER BRIDGE ENHANCEMENTS

January 25, 2021

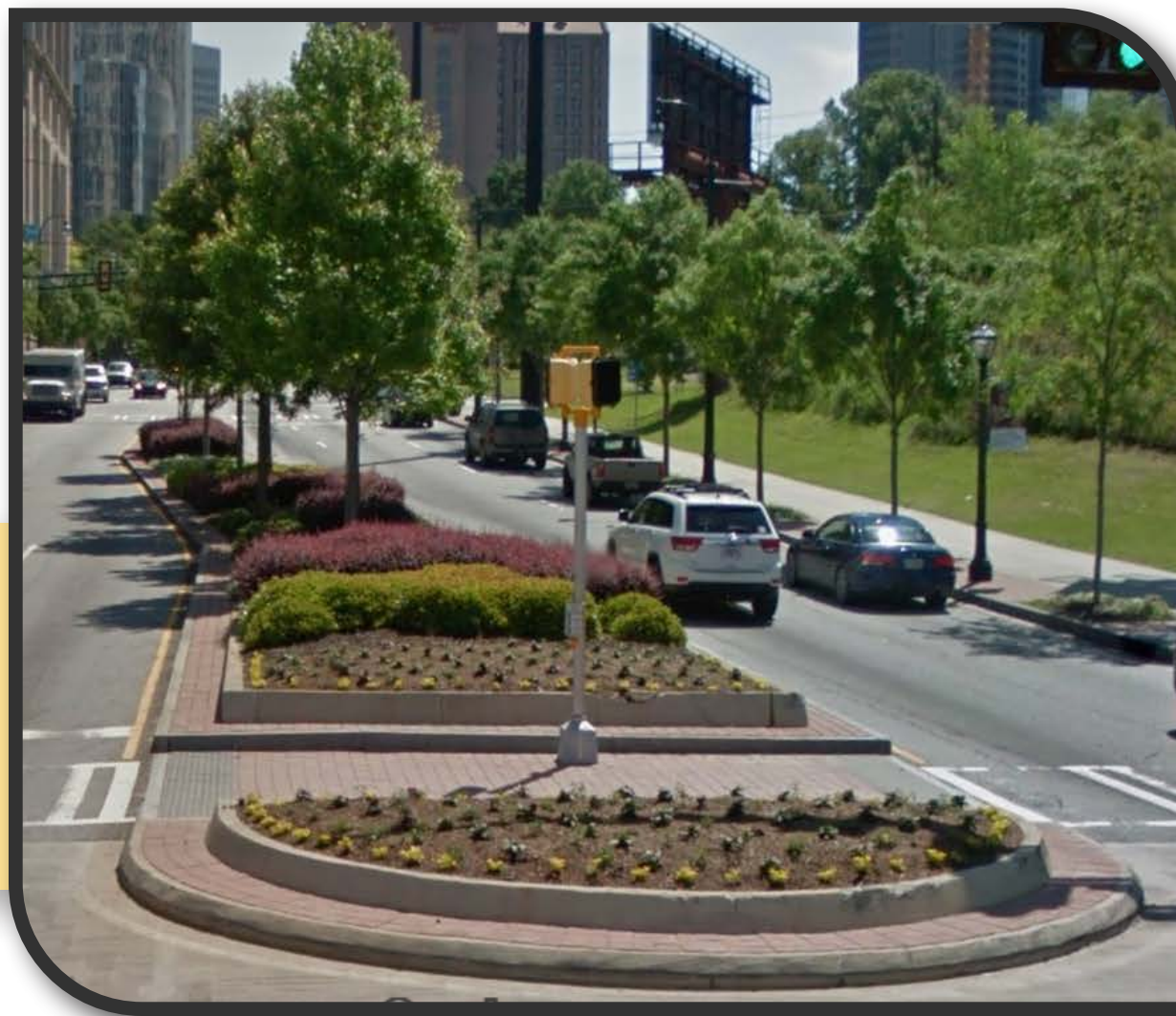
DESIGN COMPONENTS



Monumentation



Lighting

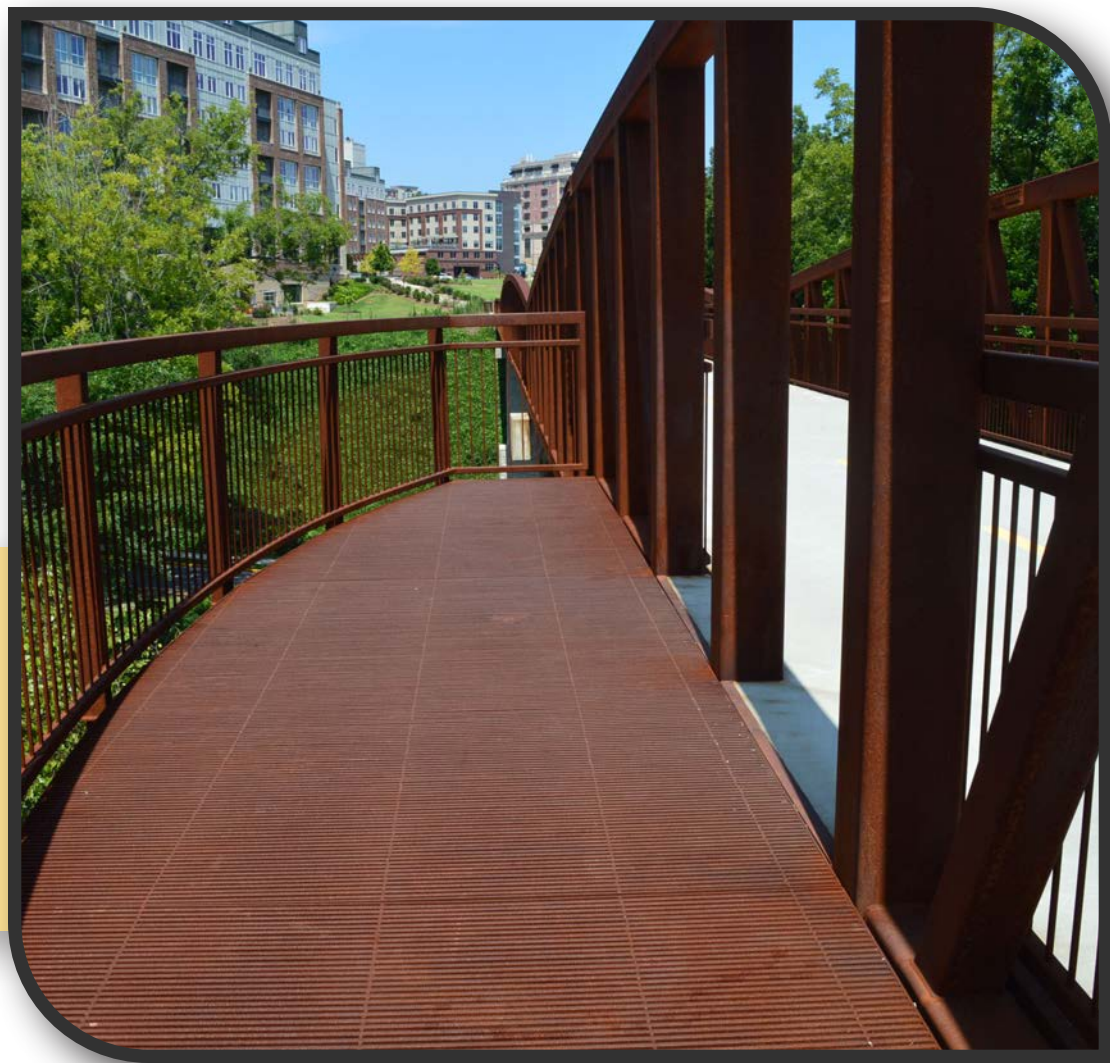
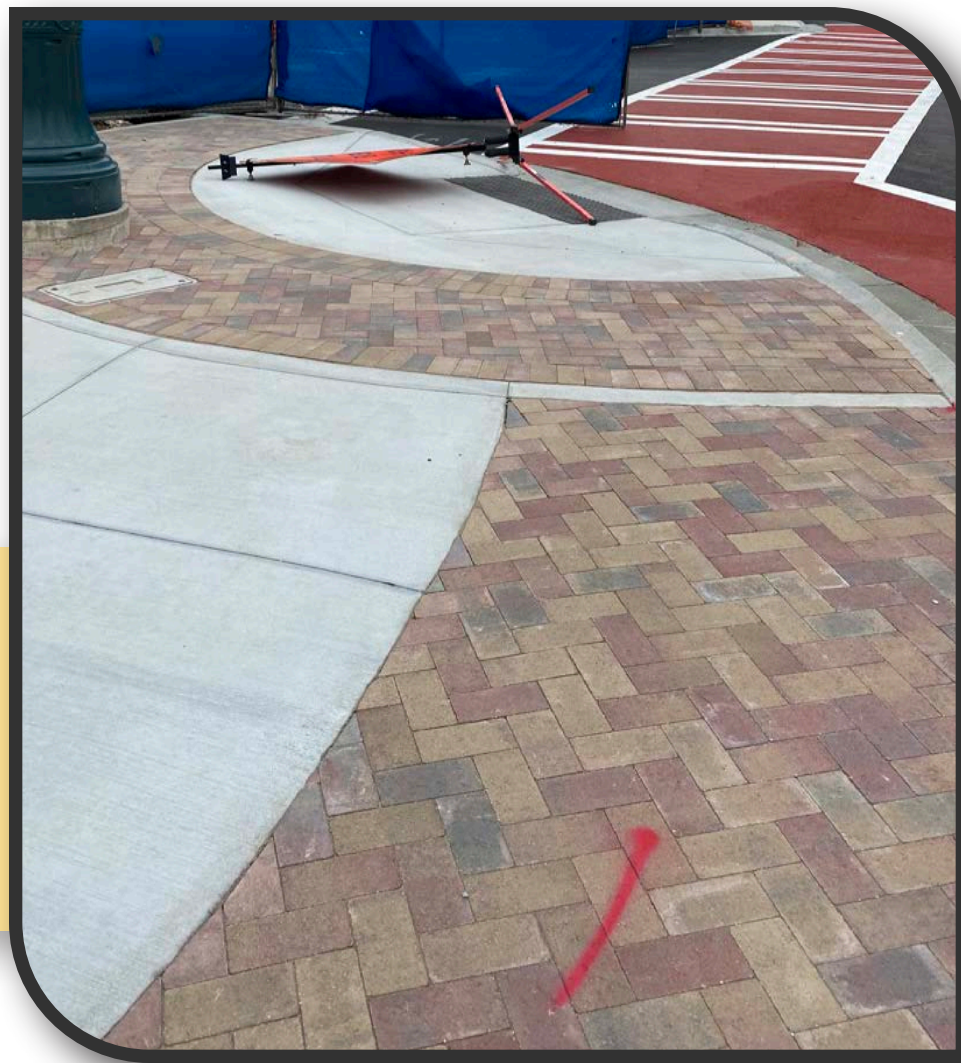
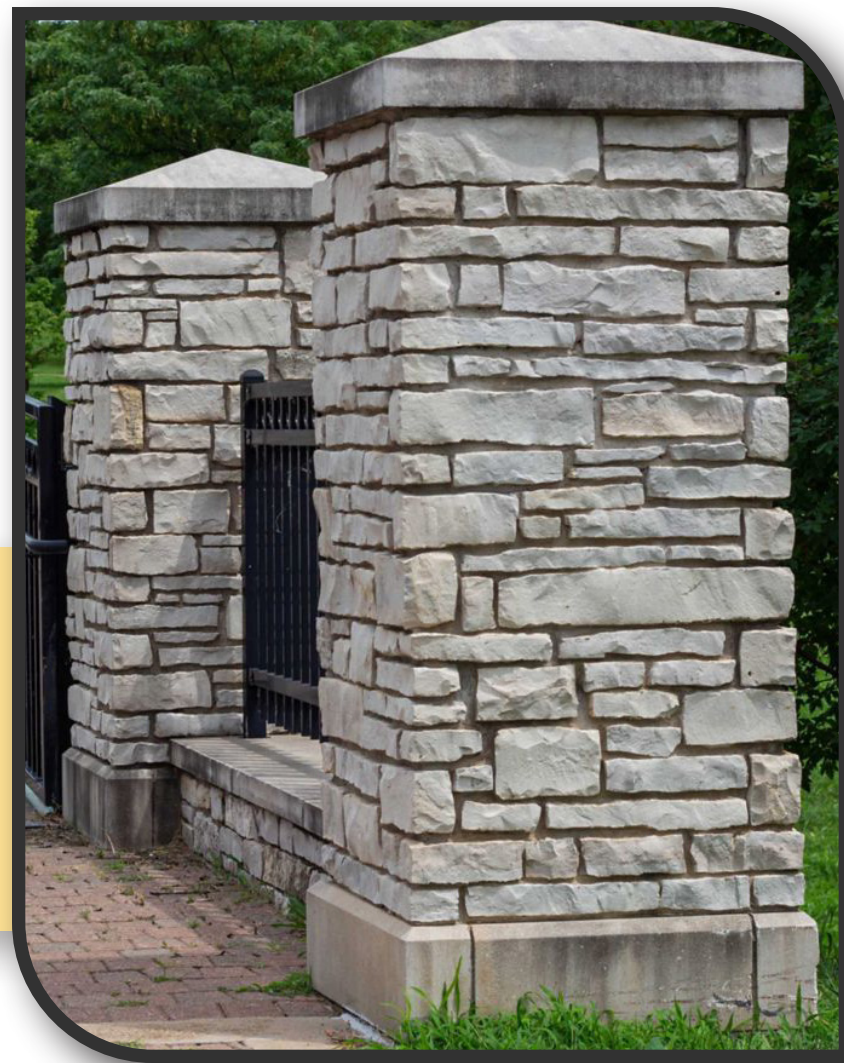
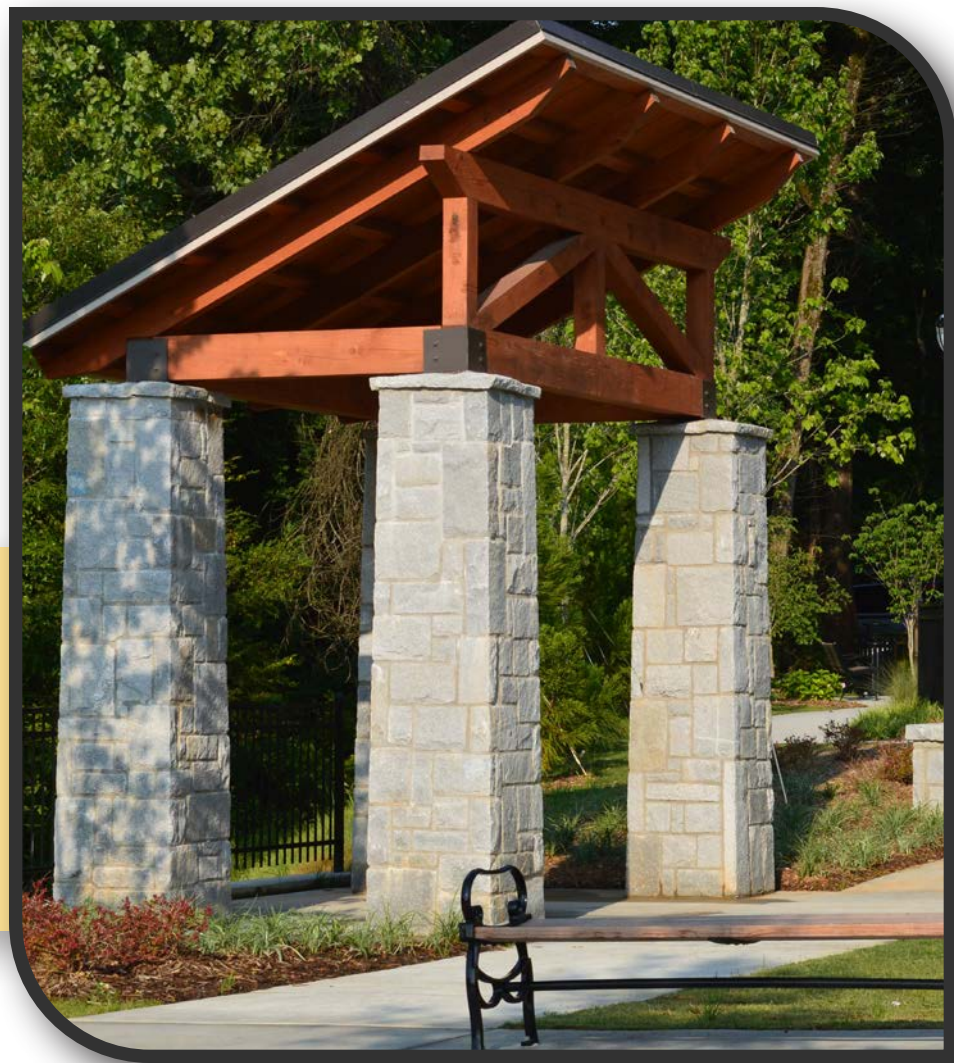
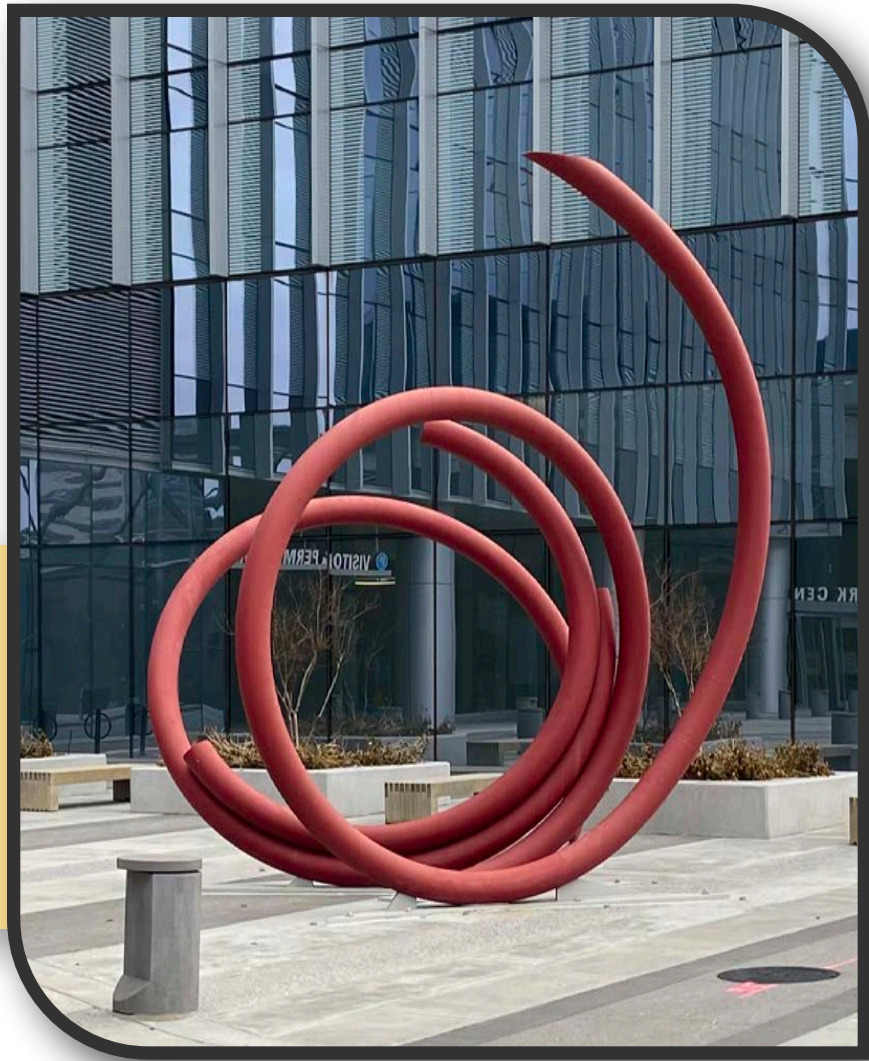


Landscaping

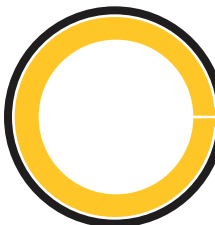
PERIMETER CENTER BRIDGE ENHANCEMENTS

January 25, 2021

CHARACTER AND MATERIALS



PERIMETER CENTER BRIDGE ENHANCEMENTS



January 25, 2021