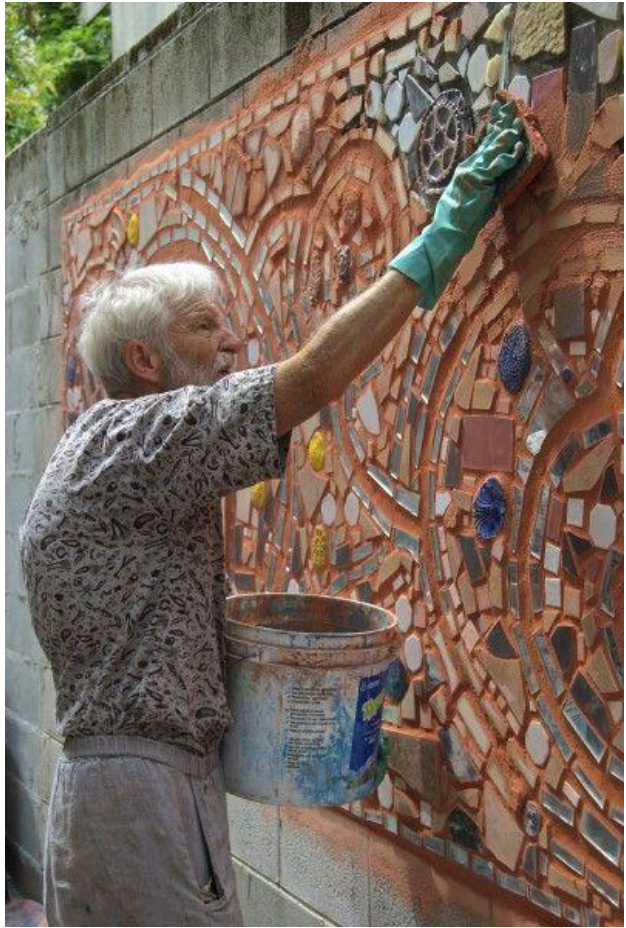


**Art ideas for retaining wall corner
of
Chamblee Dunwoody Rd &
Womack Rd.**

Preferred option: Mosaic





Mosaics utilizing organic materials

#12.



High profile installations



Parc Guell by Antoni Gaudi



Rolling Bench outside Grant's Tomb NYC by Pedro Silva



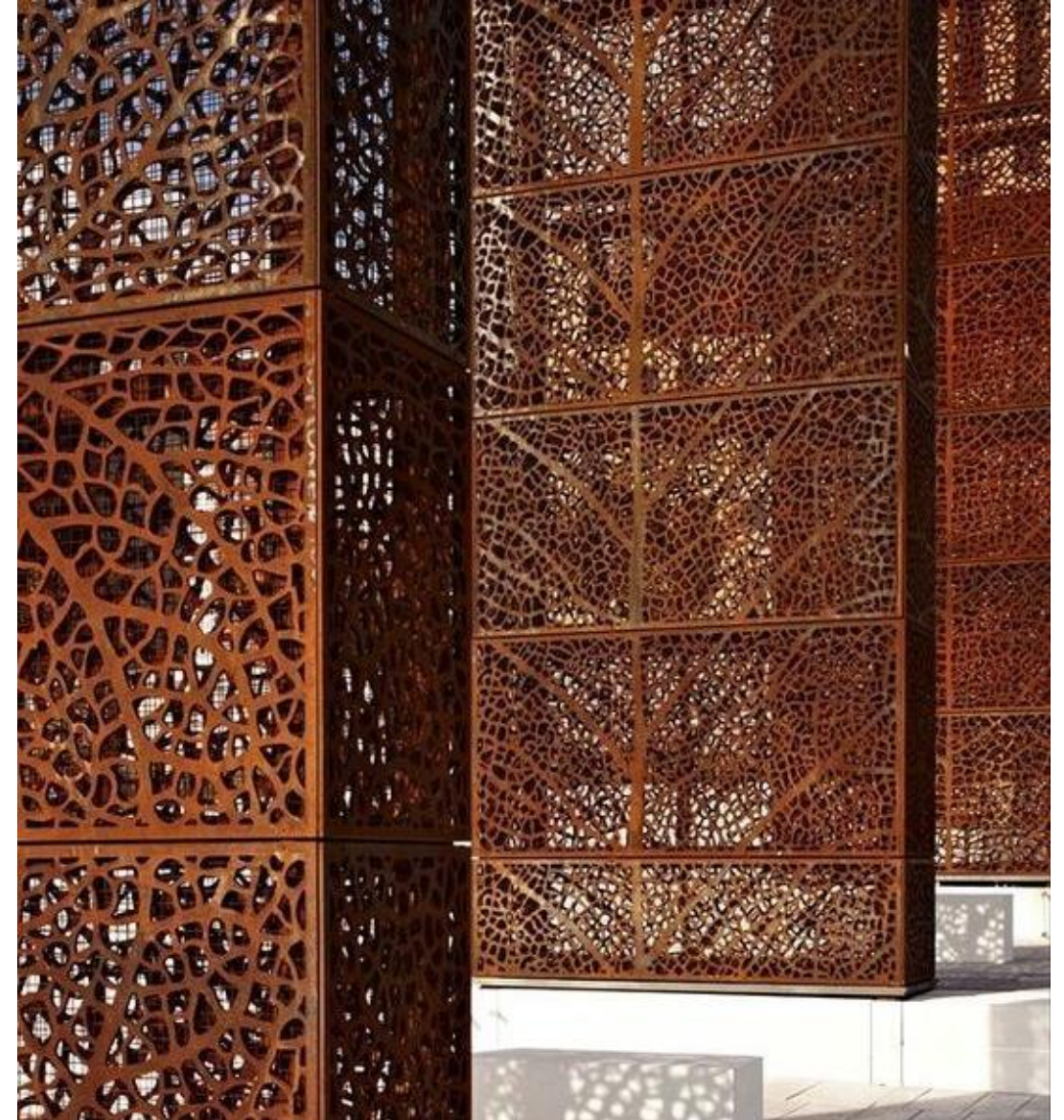
Paradise Garden by Howard Finster



Other Options

Metal Panels

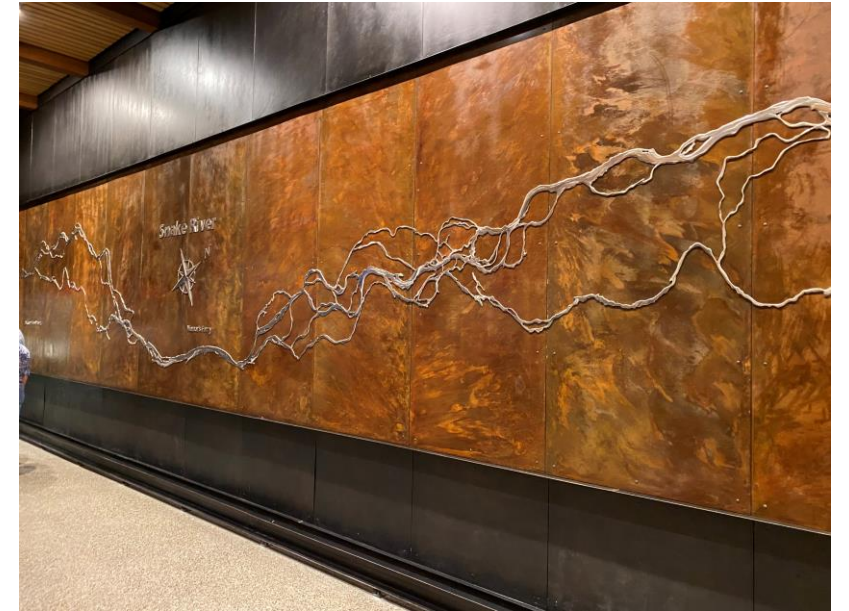
#12.



Corten Steel



Metal panels with applied graphic



Repurposed Materials

#12.



Sculpted concrete & paint



Cast concrete blocks



Mixed aggregate to create abstract landscape

