



4800 Ashford Dunwoody Road  
 Dunwoody, Georgia 30338  
 dunwoodyga.gov | 678.382.6700

## MEMORANDUM

**To:** Mayor and City Council

**From:** Michael Smith, Public Works Director

**Date:** September 9, 2024

**Subject:** **Chamblee Dunwoody Road Bridge Enhancements Conceptual Design**

### **ACTION**

Review final design concepts for bridge enhancements on Chamblee Dunwoody Road at I-285 to be incorporated into the Georgia Department of Transportation (GDOT) Top End Managed Lanes project.

### **SUMMARY**

The Georgia Department of Transportation (GDOT) is planning to replace the Chamblee Dunwoody Road bridge over I-285 as part of the Top End Managed Lanes project. The new bridge will have the same number of lanes as the existing bridge with a 10-foot sidewalk on the east side of road and a 12-foot-wide shared use path on the west side. With Cotillion Drive and Savoy Drive becoming one-way roads, a return access lane connecting the two roads will also be added to the east side of the bridge.

The planned bridge replacement provides an opportunity for the city to add enhancements to the new bridge which serves as one of the primary gateways into Dunwoody. Kimley-Horn, the design consultant for this project, has continued to refine the initial concepts as shown in the attached presentation based on input from the City Council at meetings in March and April of 2021 and in June of 2022. The design has also been coordinated with the Perimeter Community Improvement District (PCID) to create some continuity with their plans to enhance bridges within the district.

The plans have been reviewed by GDOT and coordination with their Top End 285 Managed Lane project team is ongoing. GDOT has indicated that the details and costs need to be finalized so that an Intergovernmental Agreement can be executed with Dunwoody by mid-2025.

### **DETAILS**

The attached presentation includes details of the proposed design with options for the level and cost of the enhancements.

### **RECOMMENDED ACTION**



4800 Ashford Dunwoody Road  
Dunwoody, Georgia 30338  
dunwoodyga.gov | 678.382.6700


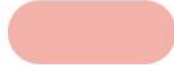
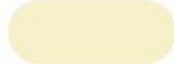
Staff requests direction from the City Council on the budget for the project so that the final scope for the enhancements can be developed.

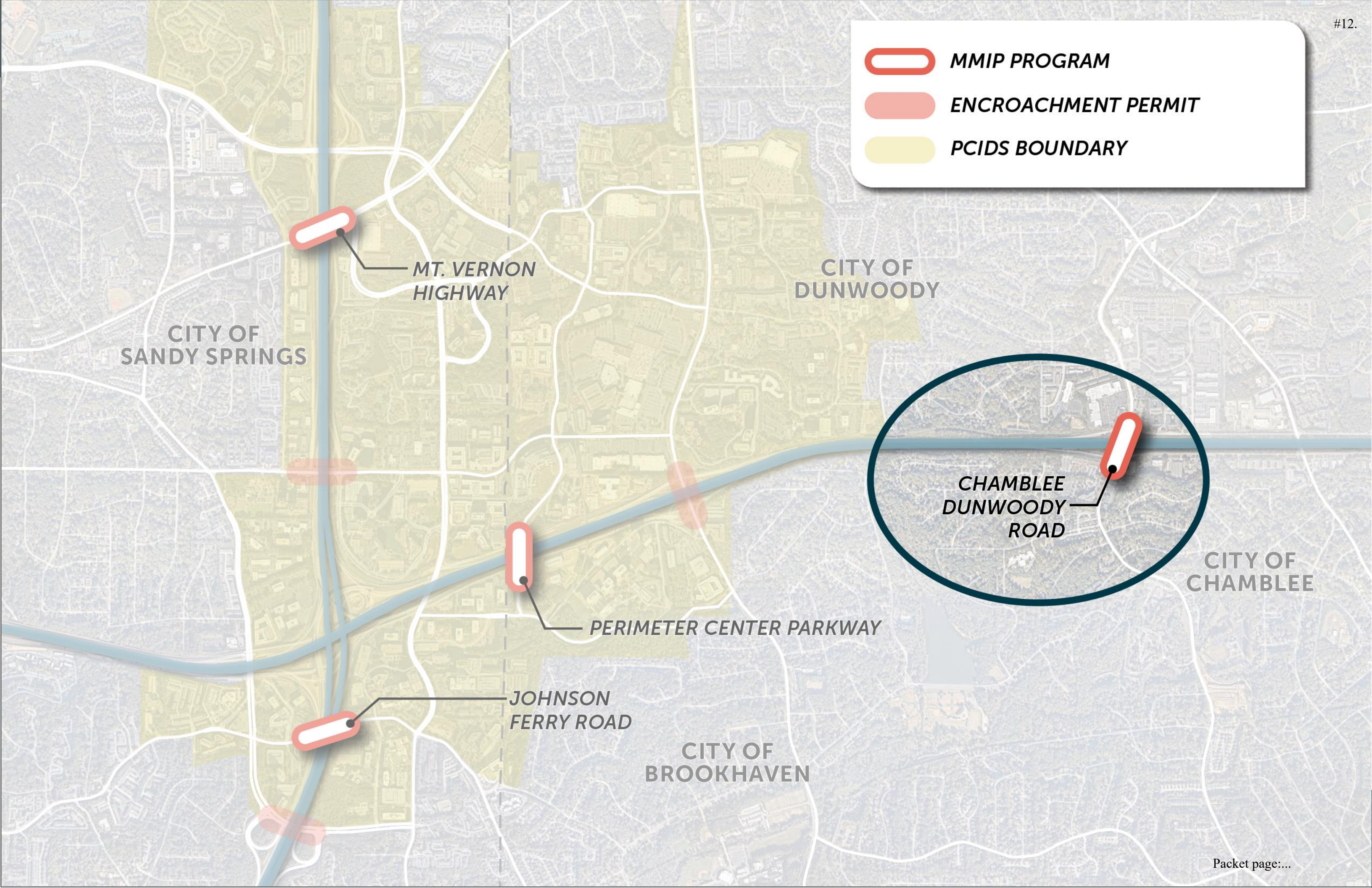


COUNCIL UPDATE

**CHAMBLEE DUNWOODY BRIDGE ENHANCEMENTS**

SEPTEMBER 2024

-  **MMIP PROGRAM**
-  **ENCROACHMENT PERMIT**
-  **PCIDS BOUNDARY**



CITY OF SANDY SPRINGS

MT. VERNON HIGHWAY

CITY OF DUNWOODY

CHAMBLEE DUNWOODY ROAD

CITY OF CHAMBLEE

PERIMETER CENTER PARKWAY

JOHNSON FERRY ROAD

CITY OF BROOKHAVEN



- » Reviewed design precedents from other regions
- » Evaluated a variety of aesthetic enhancement types
- » Studied existing context of the area to identify design themes and motifs



- » Developed a series of preliminary design alternatives
- » Developed a Preferred Concept based on feedback





## LEVEL 1 ENHANCEMENT (ALL LOCATIONS)

- Enhanced Railings with Columns and Lighting
- Paint Treatments on Parapet Walls, Copings, Columns, and Bents



## LEVEL 2 ENHANCEMENT (PRIMARY AND SECONDARY GATEWAYS)

- Level 1 Enhancements plus:
- Integrated Railing Pylons with Ornamental Uplighting / Downlighting

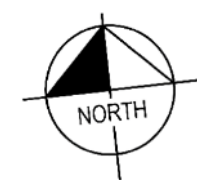
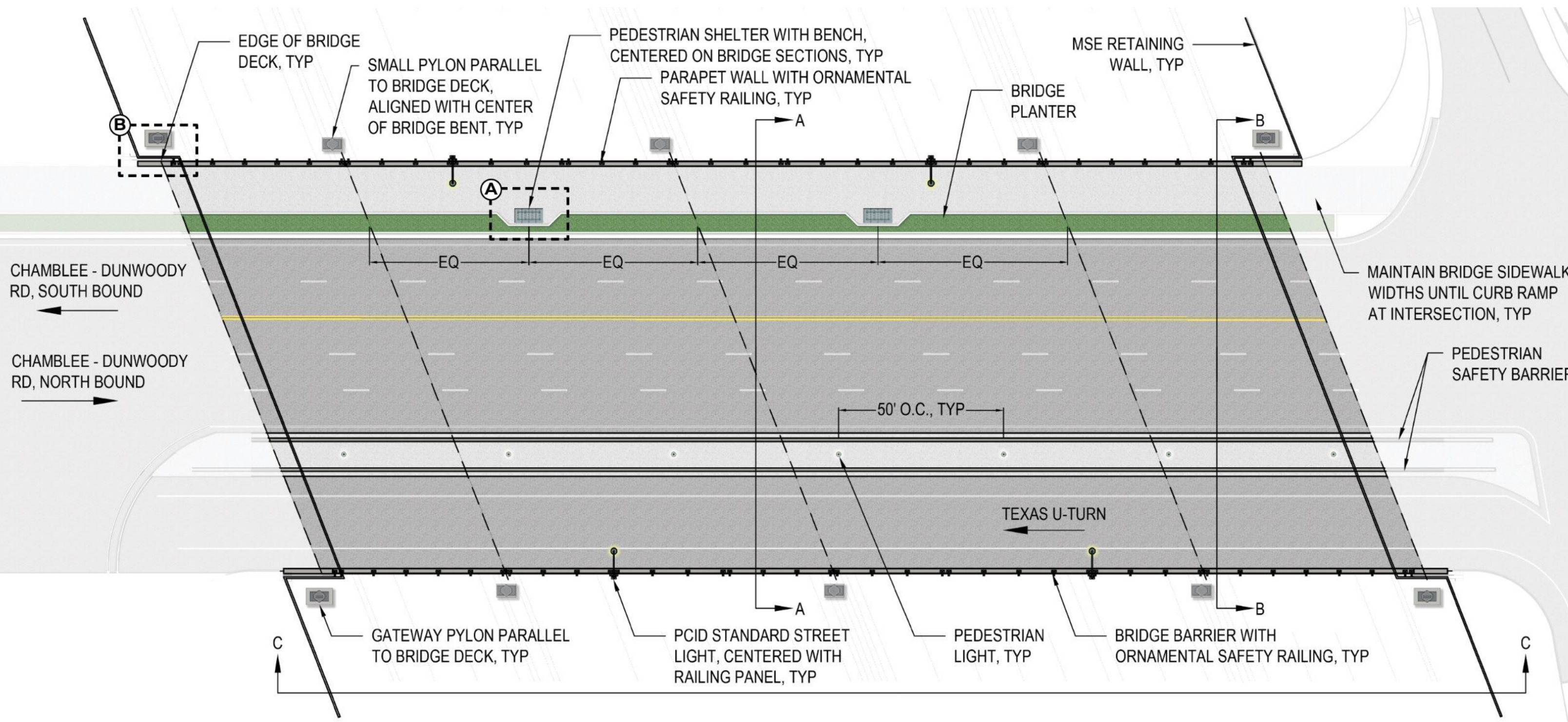


## LEVEL 3 ENHANCEMENT (PRIMARY GATEWAYS)

- Level 1 and 2 Enhancements plus:
- Regional Monuments
- Pedestrian Shade Structures
- Planters on Structures

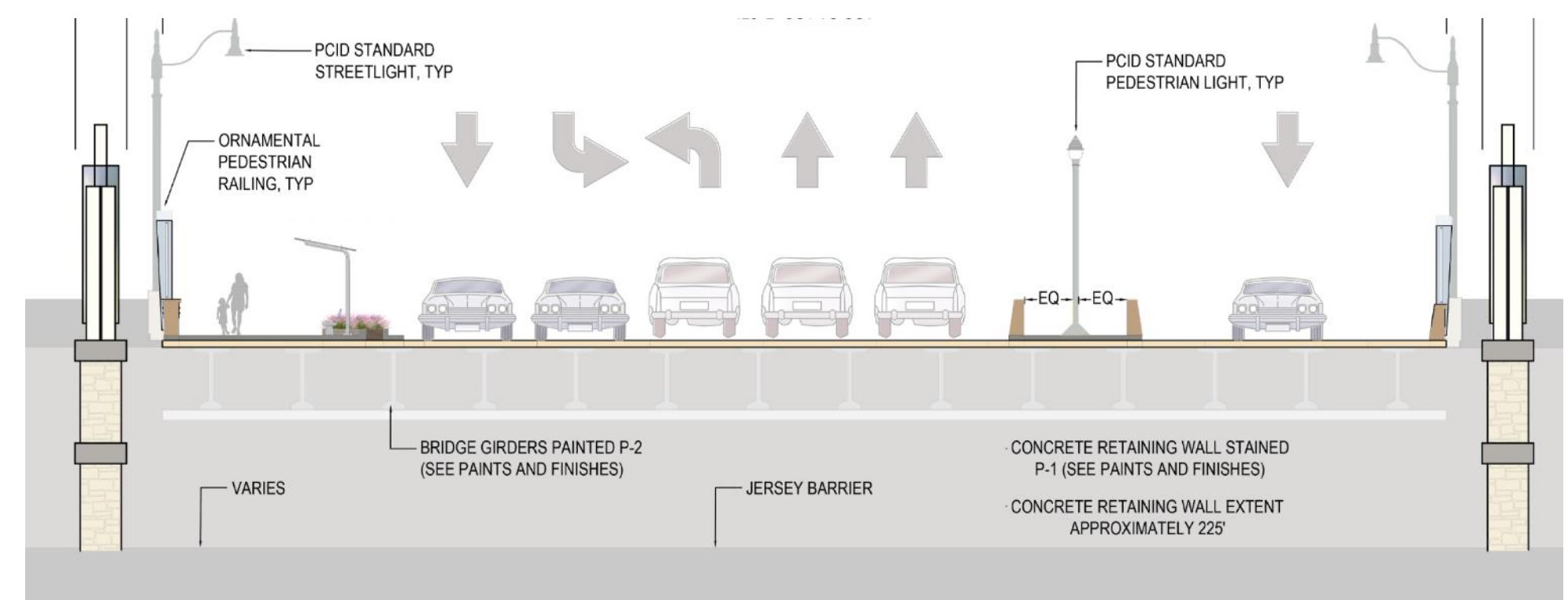
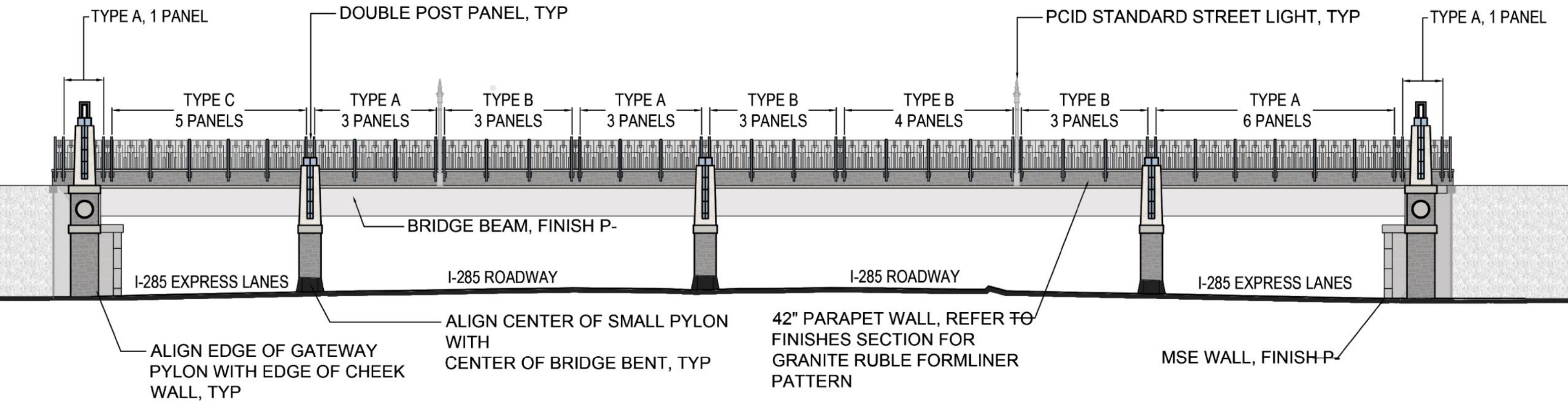


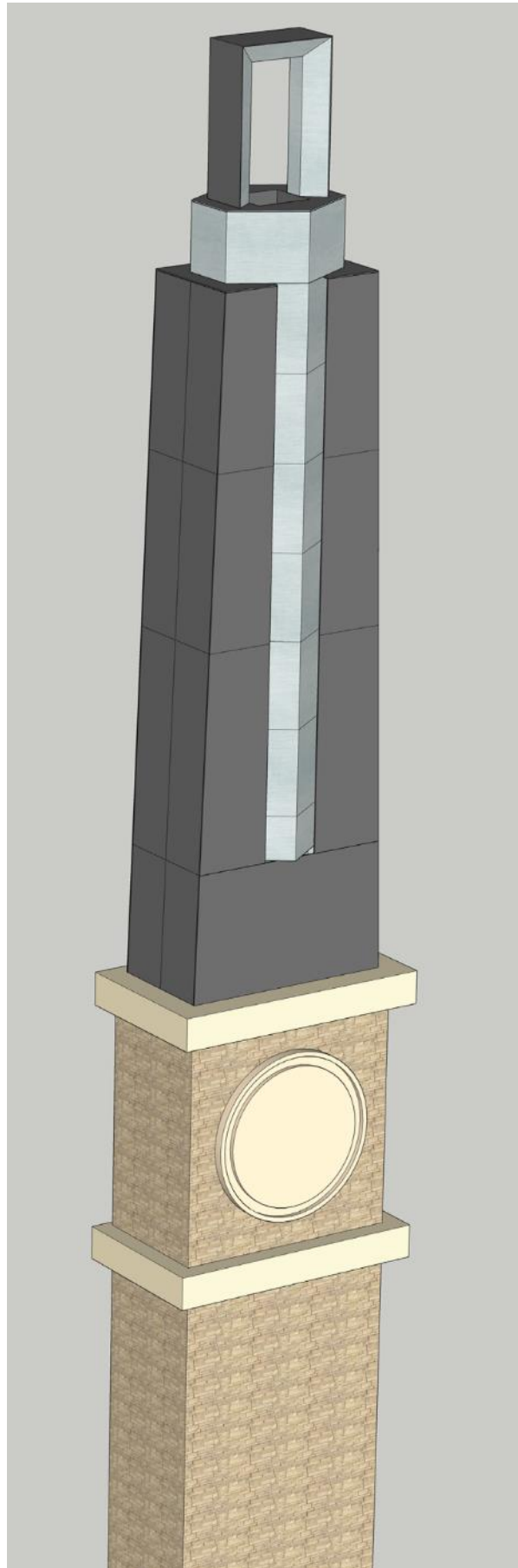






# CHAMBLEE – DUNWOODY BRIDGE





Muhlenbergia Capillaris | Pink Muhly Grass



Bouteloua Curtipendula | Sideoats Grama



Nassella Tenuissima | Mexican Feathergrass





