

To: Mayor and City Council
From: Cody Dallas, Senior Stormwater Engineer
Re: Funding Authorization for 4525 Sudbury Road Storm Repairs
Date: November 12, 2024

Action

Authorize the Mayor, City Manager, or designee to allocate up to \$104,888.44 through its unit-price contract with Southern Premier Contractors to complete stormwater pipe repairs at 4525 Sudbury Road.

Summary/Details

Structural deficiencies to the storm system on Sudbury Road were identified during the performance of routine inspections of the stormwater infrastructure. The double-barrel pipe system is composed of two 60-inch corrugated metal pipe (CMP) pipes, each measuring +/-75 linear feet (total of +/-150 linear feet). The system is approximately 55 years old and in poor condition. Closed-Caption Television (CCTV) footage discovered corrosion and deformation in the pipe system.

Recommended repairs include:

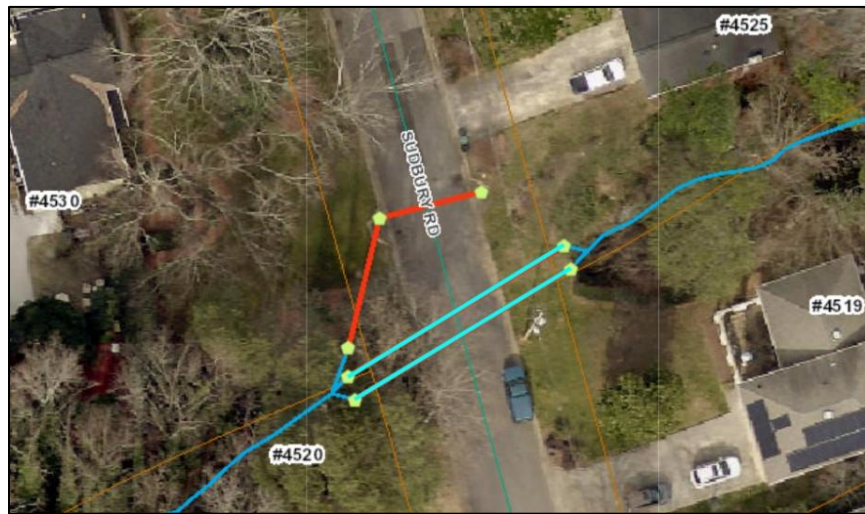
- Repair total of +/-150 LF of 60-inch CMP with Centrifugal Spin Cast Lining
- 10 hours bypass pumping
- 5 days minor traffic control

If approved by Council, this project will be funded from the Stormwater Utility's annual repairs and maintenance budget.

Recommendation

Authorize the Mayor, City Manager, or designee to allocate up to \$104,888.44 through its unit-price contract with Southern Premier Contractors to complete stormwater pipe repairs at 4525 Sudbury Road.

Project Map





SOUTHERN PREMIER CONTRACTORS, INC
 HOMER, GA 30547

Estimate

Date	Estimate #
5/6/2024	229049

Name / Address
CITY OF DUNWOODY 4800 ASHFORD DUNWOODY DUNWOODY, GA 30338

Project
4525 SUDBURY RD

Item	Qty	Description	Rate	Amount
DN001	1	MOBILIZATION	2,133.80	2,133.80
DN005	5	TRAFFIC CONTROL MINOR 2 - INCLUDES CONES AND SIGNAGE	1,920.42	9,602.10
DN008	150	TV STORM LINES (INCLUDES DVD & REPORT)	4.27	640.50
DN021	150	60" PIPE - CLEANING LESS THAN 25% FULL	12.64	1,896.00
DN134	4	60" DIAMETER INTERNAL PIPE POINT REPAIR	426.76	1,707.04
DN204	2	CAST-IN-PLACE TOP ONLY w/RING & COVER	2,667.25	5,334.50
DN206	2	INVERT INSTALLATION, 4' DIAMETER	480.11	960.22
DN220	4	18" GROUT EACH END TO STRUCTURE	208.05	832.20
DN232	2	GROUT ALL JOINT, CRACKS & HOLES IN STRUCTURE, COMPLETE (STRUCTURES 8' DEEP OR LESS)	853.52	1,707.04
DN3471	150	60" CENT. SPIN CAST LINING	425.00	63,750.00
DN368	3	FINISH GRADING	10.67	32.01
DN384	3	SEED & STRAW (PERMANENT GRASSING)	8.54	25.62
DN390	3	TOPSOIL COMPLETE	74.68	224.04
DN409	2	REMOVAL OF EXISTING DRAINAGE STRUCTURES	2,400.53	4,801.06
DN418	1	BYPASS PUMPING SETUP-EQUIPMENT AND HOSE PLACEMENT	1,066.90	1,066.90
DN419	10	4" PUMPING OPERATION TIME	64.01	640.10
CON		10% CONTINGENCY	9,535.31	9,535.31

Thank you for the opportunity to estimate this project.	Total	\$104,888.44
---	--------------	--------------