

Homecoming Park

- Parcels purchased June 2021
- Master Plan adopted April 2023



HOMEcomings PARK MASTER PLAN

Est. Cost \$5.6m

CONCEPT



Total Parking = 67 spaces
Total Park Acreage = 9.3 ac

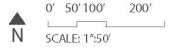


Keynotes:

1. Wildflower meadow
2. Open play field (245 ft. x 145 ft.)
3. Nature trail/Walking loop (0.51 mile)
4. Restrooms
5. Pavilion with solar panels on roof (40 ft. x 30 ft.)
6. ADA/Sensory playground (12,000 sq. ft.)
7. Main entrance
8. (3) Pickleball courts (44 ft. x 22 ft. each)
9. Gazebo (18' diameter)
10. Parking area (22 spaces)
11. Parking area (25 spaces)
12. Vehicular drop-off area with public art
13. Parking area (20 spaces)
14. Gazebo (18' diameter)
15. City of Dunwoody Parks Department office with solar panels on roof (see general note #5)
16. Sensory/community garden
17. Interpretive signage, typ.
18. Existing wooded area to remain
19. Heavily vegetated buffer

General Notes:

1. Cameras will be installed as needed.
2. Stormwater design will adhere to the guidance provided in the Georgia Stormwater Management Manual 2016 Edition.
3. Fence and heavily vegetated buffer are proposed around the periphery of the park.
4. Department of Public Works will design traffic calming measures as part of the Vermack Road street improvements.
5. Parks Operations Office will relocate to Brook Run Park once new maintenance facility is constructed and the house will be repurposed for community use.
6. Within the next 2 years the City of Dunwoody Public Works Department will improve the existing path between the Village Mill and Heritage at Dunwoody Subdivisions.



EXAMPLE IMAGES



Note: Photos are for representative example use only. Actual facilities and structures will vary.

Community Interest: Sand Volleyball

- Interest form began circulation August 2024
- 350 positive responses to date
- Pickleball offered at Pernoshal Park, Windwood Hollow Park, and Waterford Park; shown in Wildcat Park master plan
- Shown in Brook Run Park Master Plan
- Closest sand volleyball is Don White Memorial Park in Roswell



LET'S GET BEACH VOLLEYBALL IN DUNWOODY



Beach volleyball is an activity that can be enjoyed by people of all ages. Currently, there are no beach volleyball courts in Dunwoody parks. But with your help we can solve this problem. Fill out this survey to show your support!

PLEASE FILL OUT THIS INTEREST FORM



Concept with sand volleyball

Est. Cost \$5.5m

CONCEPT



Total Parking = 67 spaces
Total Park Acreage = 9.3 ac



Keynotes:

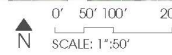
1. Wildflower meadow
2. Open play field (245 ft. x 145 ft.)
3. Nature trail/Walking loop (0.51 mile)
4. Restrooms
5. Pavilion with solar panels on roof (40 ft. x 30 ft.)
6. ADA/Sensory playground (12,000 sq. ft.)
7. Main entrance
8. (2) Sandy Volleyball Courts (72 ft. x 46 ft. each - inclusive of our of bounds area)
9. Gazebo (18' diameter)

10. Parking area (22 spaces)

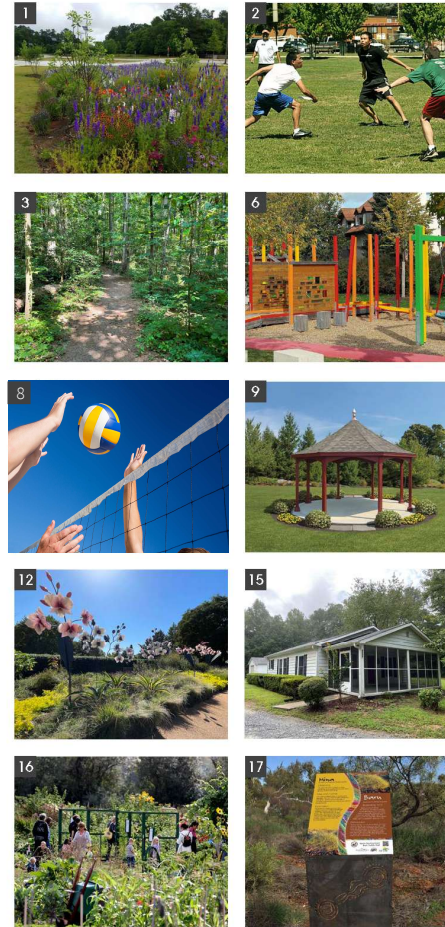
11. Parking area (25 spaces)
12. Vehicular drop-off area with public art
13. Parking area (20 spaces)
14. Gazebo (18' diameter)
15. City of Dunwoody Parks Department office with solar panels on roof (see general note #5)
16. Sensory/community garden
17. Interpretive signage, typ.
18. Existing wooded area to remain
19. Heavily vegetated buffer

General Notes:

1. Cameras will be installed as needed.
2. Stormwater design will adhere to the guidance provided in the Georgia Stormwater Management Manual 2016 Edition.
3. Fence and heavily vegetated buffer are proposed around the periphery of the park.
4. Department of Public Works will design traffic calming measures as part of the Vermack Road street improvements.
5. Parks Operations Office will relocate to Brook Run Park once new maintenance facility is constructed and the house will be repurposed for community use.
6. Within the next 2 years the City of Dunwoody Public Works Department will improve the existing path between the Village Mill and Heritage of Dunwoody Subdivisions.



EXAMPLE IMAGES



Note: Photos are for representative example use only. Actual facilities and structures will vary.